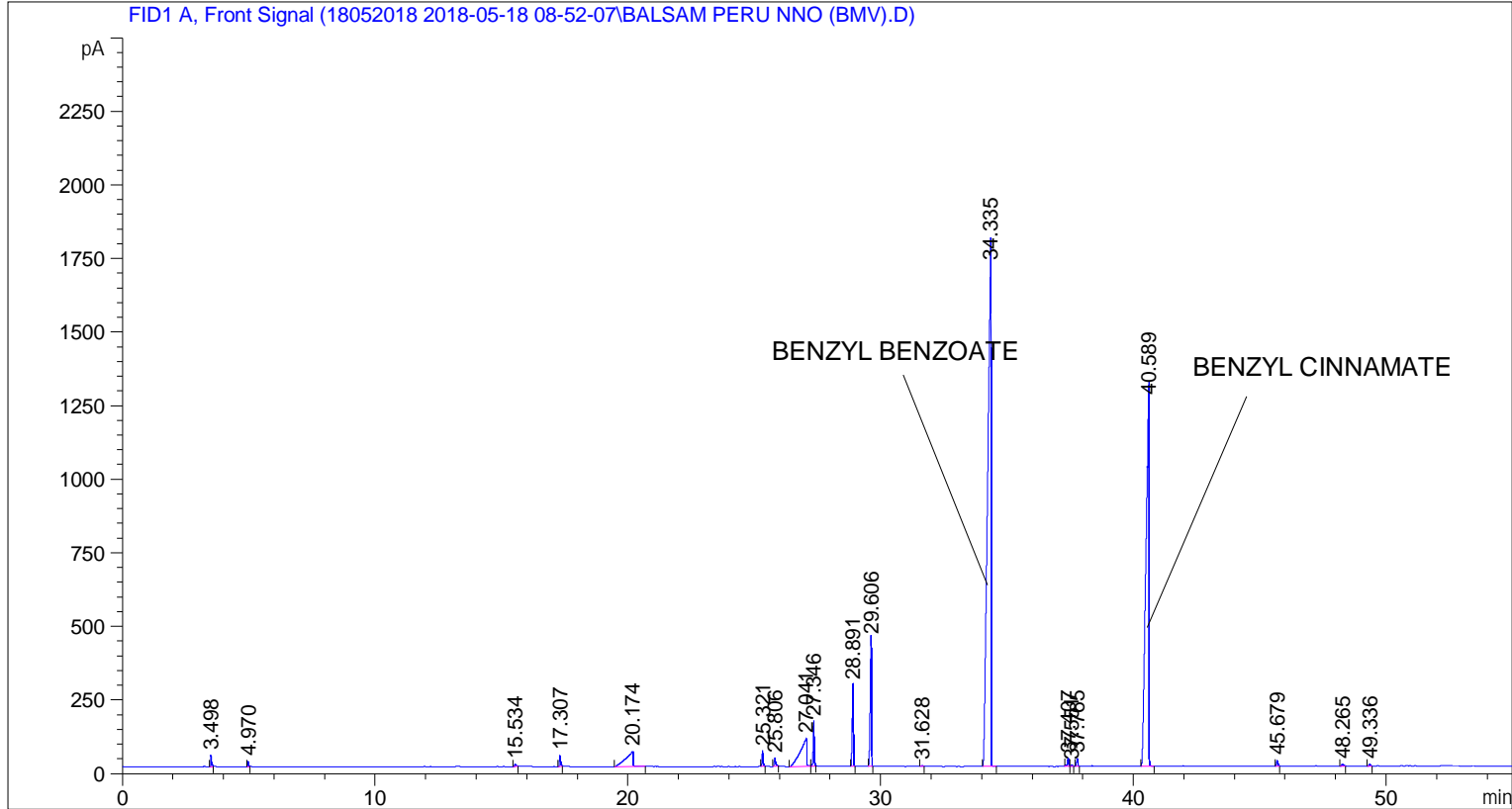


```
=====
Acq. Operator   : SYSTEM                      Seq. Line :    2
Acq. Instrument : BMV_NEW_GC_7820            Location  : Vial 102
Injection Date  : 5/18/2018 10:29:36 AM      Inj       :    1
                                                Inj Volume: 0.5 µl

Acq. Method    : C:\CHEM32\2\DATA\18052018 2018-05-18 08-52-07\UNIVERSAL F.M
Last changed   : 5/18/2018 8:52:12 AM by SYSTEM
Analysis Method: C:\CHEM32\2\DATA\18052018 2018-05-18 08-52-07\UNIVERSAL F.M (Sequence
Method)
Last changed   : 5/28/2018 2:49:13 PM by SYSTEM
                (modified after loading)
=====
```



=====
 Area Percent Report
 =====

```
Sorted By       : Signal
Multiplier      : 1.0000
Dilution       : 1.0000
Do not use Multiplier & Dilution Factor with ISTDs
```

Signal 1: FID1 A, Front Signal

Peak #	RetTime [min]	Type	Width [min]	Area [pA*s]	Height [pA]	Area %
1	3.498	BB	0.0402	95.68782	36.92992	0.28426
2	4.970	BB	0.0403	45.58815	17.54865	0.13543
3	15.534	BB	0.0689	31.14833	6.61372	0.09253
4	17.307	BB	0.0499	122.48933	37.71559	0.36388
5	20.174	BB	0.2569	1030.53345	51.17867	3.06139
6	25.321	BB	0.0481	165.33574	53.45993	0.49116
7	25.806	BB	0.0648	122.66586	28.16281	0.36440

Peak #	RetTime [min]	Type	Width [min]	Area [pA*s]	Height [pA]	Area %
8	27.041	BV	0.2242	1667.08569	92.52042	4.95238
9	27.346	VB	0.0500	465.24249	150.77649	1.38209
10	28.891	BB	0.0528	914.76007	275.28793	2.71746
11	29.606	BB	0.0565	1570.72632	431.28314	4.66613
12	31.628	BB	0.0507	12.13056	3.85345	0.03604
13	34.335	BB	0.1277	1.59965e4	1701.06543	47.52064
14	37.407	BV	0.0580	110.27937	29.23103	0.32760
15	37.551	VB	0.0608	20.61644	5.13545	0.06124
16	37.765	BB	0.0544	91.92014	26.55977	0.27307
17	40.589	BB	0.1178	1.10649e4	1243.19470	32.87044
18	45.679	BB	0.0607	78.77000	19.69749	0.23400
19	48.265	BB	0.0771	34.40326	6.78789	0.10220
20	49.336	BB	0.0600	21.43103	5.68070	0.06366

Totals : 3.36623e4 4222.68319

=====
*** End of Report ***