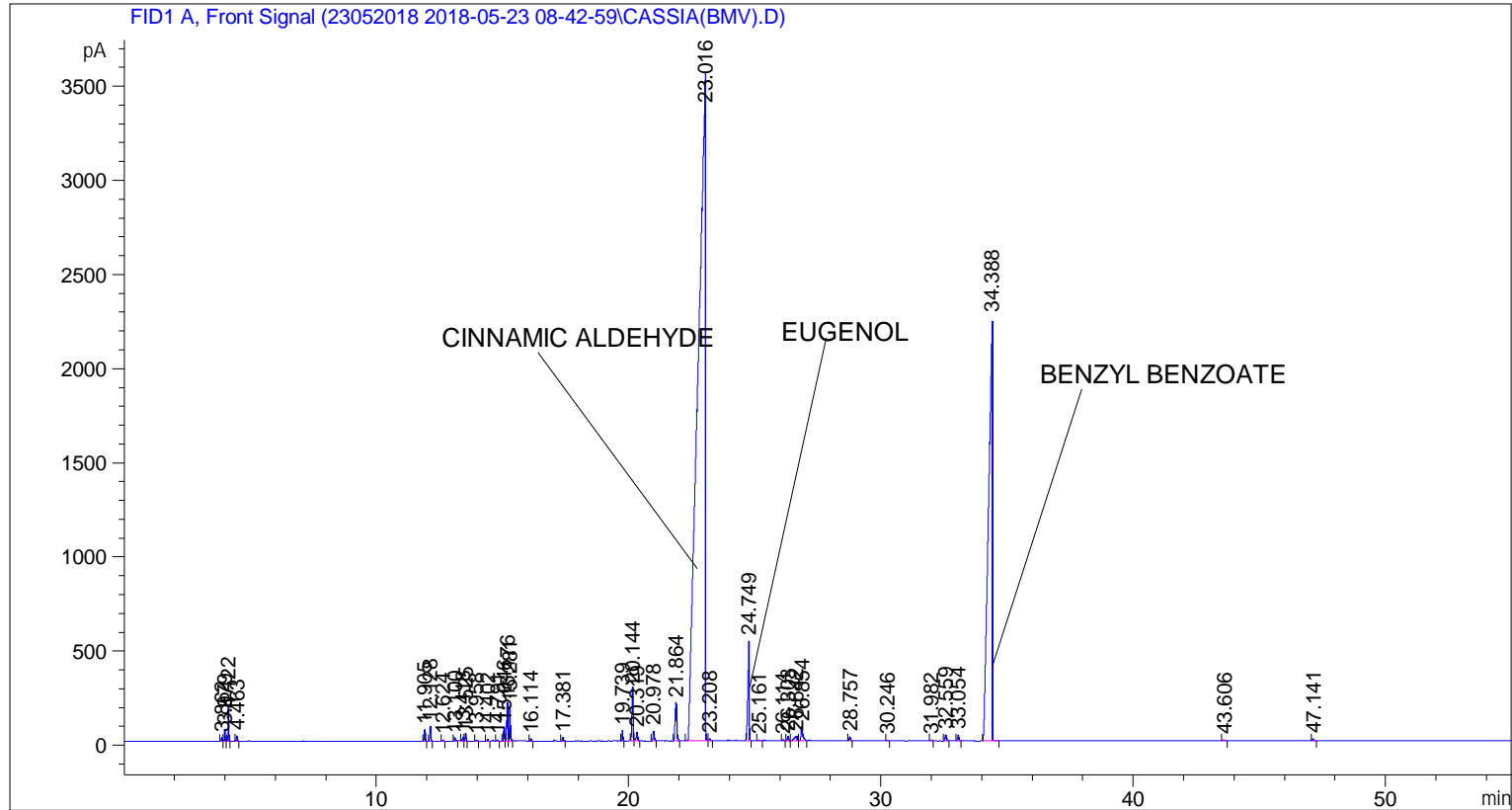


```

=====
Acq. Operator   : SYSTEM                               Seq. Line :    1
Acq. Instrument : BMV_NEW_GC_7820                     Location  : Vial 101
Injection Date  : 5/23/2018 9:09:03 AM                Inj       :    1
                                                    Inj Volume: 0.5 µl

Acq. Method     : C:\CHEM32\2\DATA\23052018 2018-05-23 08-42-59\UNIVERSAL F.M
Last changed    : 5/23/2018 8:43:06 AM by SYSTEM
Analysis Method : C:\CHEM32\2\DATA\23052018 2018-05-23 08-42-59\UNIVERSAL F.M (Sequence
Method)
Last changed    : 5/31/2018 2:41:32 PM by SYSTEM
                  (modified after loading)
  
```



=====
 Area Percent Report
 =====

```

Sorted By      :      Signal
Multiplier     :      1.0000
Dilution       :      1.0000
Do not use Multiplier & Dilution Factor with ISTDs
  
```

Signal 1: FID1 A, Front Signal

Peak #	RetTime [min]	Type	Width [min]	Area [pA*s]	Height [pA]	Area %
1	3.862	BV	0.0366	42.88443	20.32048	0.04061
2	3.979	VB	0.0369	123.30149	57.69064	0.11677
3	4.122	BB	0.0351	337.20877	144.92296	0.31934
4	4.463	BB	0.0387	63.41155	27.66208	0.06005
5	11.905	BB	0.0448	167.89113	59.71511	0.15899
6	12.128	BB	0.0448	216.29257	76.90279	0.20483
7	12.624	BB	0.0465	12.41613	4.19813	0.01176

Peak #	RetTime [min]	Type	Width [min]	Area [pA*s]	Height [pA]	Area %
8	13.100	BB	0.0607	69.55944	16.66088	0.06587
9	13.418	BV	0.0458	48.31162	16.69136	0.04575
10	13.525	VB	0.0465	109.39606	36.99986	0.10360
11	13.958	BB	0.0486	16.66110	5.30453	0.01578
12	14.402	BB	0.0500	20.11967	6.91001	0.01905
13	14.791	BB	0.0458	18.21502	6.29486	0.01725
14	15.046	BV	0.0458	205.50877	70.99390	0.19462
15	15.176	VV	0.0503	582.62689	198.42360	0.55175
16	15.281	VB	0.0503	521.65112	177.33165	0.49401
17	16.114	BB	0.0447	32.14237	11.46417	0.03044
18	17.381	BB	0.0475	57.35488	18.86350	0.05432
19	19.739	BB	0.0461	161.25319	55.21300	0.15271
20	20.144	BV	0.0546	912.43384	275.61554	0.86408
21	20.319	VB	0.0618	167.77882	42.73782	0.15889
22	20.978	BB	0.0589	185.08354	50.27810	0.17528
23	21.864	BB	0.0735	930.22614	202.97910	0.88093
24	23.016	BV	0.2752	7.36163e4	3473.97925	69.71505
25	23.208	VB	0.0479	31.22784	10.14093	0.02957
26	24.749	BB	0.0593	1967.07214	529.62952	1.86283
27	25.161	BB	0.0590	18.26971	4.95750	0.01730
28	26.114	BB	0.0480	19.03620	6.17597	0.01803
29	26.303	BB	0.0535	77.03411	23.93955	0.07295
30	26.642	BV	0.1091	184.63985	25.30789	0.17485
31	26.854	VB	0.0748	375.23294	74.48419	0.35535
32	28.757	BB	0.0570	70.00544	19.92571	0.06630
33	30.246	BB	0.0500	17.18131	5.27784	0.01627
34	31.982	BB	0.0506	17.76973	5.37290	0.01683
35	32.559	BB	0.0707	136.86194	31.47323	0.12961
36	33.054	BB	0.0584	113.41148	31.20277	0.10740
37	34.388	BB	0.1360	2.38903e4	2248.19751	22.62429
38	43.606	BB	0.0698	24.24987	5.67635	0.02296
39	47.141	BB	0.0625	35.64165	8.94100	0.03375

Totals : 1.05596e5 8088.85618

=====
*** End of Report ***