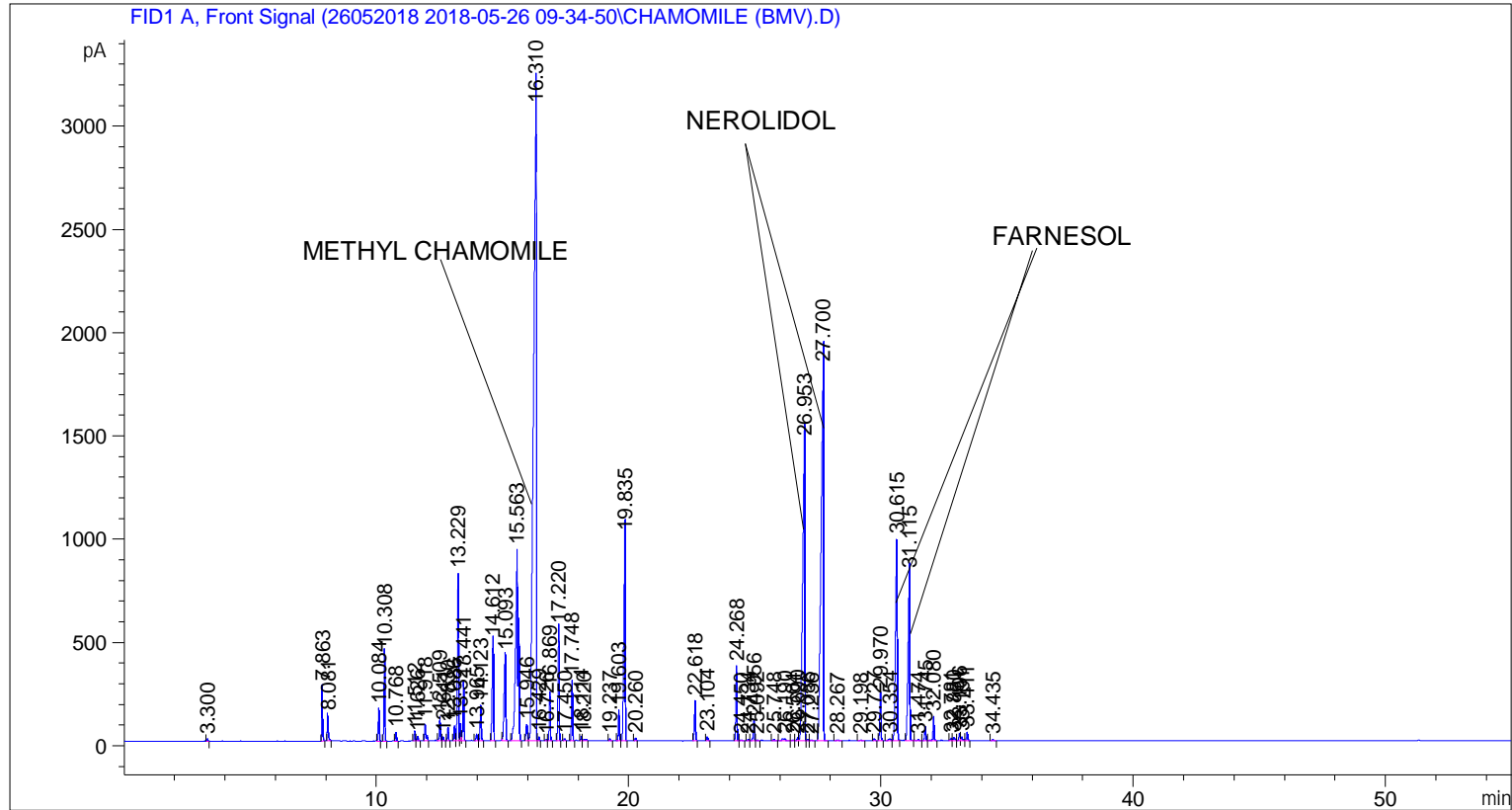


```

=====
Acq. Operator   : SYSTEM                               Seq. Line :    4
Acq. Instrument : BMV_NEW_GC_7820                     Location  : Vial 104
Injection Date  : 5/26/2018 1:08:09 PM                 Inj       :    1
                                                    Inj Volume: 0.5 µl

Acq. Method     : C:\CHEM32\2\DATA\26052018 2018-05-26 09-34-50\UNIVERSAL F.M
Last changed    : 5/26/2018 9:34:58 AM by SYSTEM
Analysis Method : C:\CHEM32\2\DATA\26052018 2018-05-26 09-34-50\UNIVERSAL F.M (Sequence
Method)
Last changed    : 5/31/2018 2:52:14 PM by SYSTEM
                  (modified after loading)
  
```



=====
 Area Percent Report
 =====

```

Sorted By      :      Signal
Multiplier     :      1.0000
Dilution       :      1.0000
Do not use Multiplier & Dilution Factor with ISTDs
  
```

Signal 1: FID1 A, Front Signal

Peak #	RetTime [min]	Type	Width [min]	Area [pA*s]	Height [pA]	Area %
1	3.300	BB	0.0352	17.24516	8.68682	0.01974
2	7.863	BB	0.0406	651.62091	266.00046	0.74595
3	8.081	BB	0.0437	365.63867	119.45657	0.41857
4	10.084	BB	0.0440	425.82541	155.47186	0.48747
5	10.308	BB	0.0481	1188.45825	432.33640	1.36050
6	10.768	BB	0.0447	109.94963	39.19051	0.12587
7	11.512	BV	0.0441	136.45404	49.54994	0.15621

Sample Name: CHAMOMILE (BMV)

Peak #	RetTime [min]	Type	Width [min]	Area [pA*s]	Height [pA]	Area %
8	11.626	VB	0.0501	60.51661	20.70881	0.06928
9	11.918	BB	0.0565	304.00830	79.65445	0.34802
10	12.509	BV	0.0484	347.05060	111.38565	0.39729
11	12.641	VB	0.0512	53.61567	17.76715	0.06138
12	12.830	BB	0.0458	183.43686	63.27944	0.20999
13	13.086	BV	0.0475	226.51225	74.35598	0.25930
14	13.229	VV	0.0524	2523.84399	807.90515	2.88920
15	13.327	VV	0.0472	244.07140	80.84757	0.27940
16	13.441	VB	0.0511	838.87329	278.75729	0.96031
17	13.965	BV	0.0601	125.94978	33.32980	0.14418
18	14.123	VB	0.0528	533.00446	168.86877	0.61016
19	14.612	BB	0.0622	1901.38660	480.05814	2.17663
20	15.093	BB	0.0737	1895.89050	412.25528	2.17034
21	15.563	BB	0.0983	6837.89404	924.04321	7.82775
22	15.946	BV	0.0638	323.58853	79.05170	0.37043
23	16.310	VV	0.1029	2.40302e4	3082.53101	27.50878
24	16.429	VB	0.0438	48.87326	17.93635	0.05595
25	16.726	BV	0.0535	24.26652	6.81991	0.02778
26	16.869	VB	0.0498	680.56512	234.78734	0.77908
27	17.220	BB	0.0509	1811.09485	543.52838	2.07327
28	17.450	BB	0.0576	43.74791	11.20334	0.05008
29	17.748	BB	0.0509	869.85052	290.92551	0.99577
30	18.114	BV	0.0473	64.65942	21.35716	0.07402
31	18.220	VB	0.0957	55.74030	7.76880	0.06381
32	19.237	BB	0.0507	31.04580	10.45104	0.03554
33	19.603	BV	0.0515	451.09399	148.17317	0.51639
34	19.835	VB	0.0606	4122.31201	988.89178	4.71906
35	20.260	BB	0.0485	41.46195	13.26707	0.04746
36	22.618	BB	0.0484	607.62543	194.91643	0.69559
37	23.104	BB	0.0567	65.65785	18.83085	0.07516
38	24.268	BB	0.0541	1175.36804	360.10971	1.34551
39	24.450	BB	0.0727	23.66382	5.24256	0.02709
40	24.734	BV	0.0600	27.77808	7.36444	0.03180
41	24.956	VV	0.0522	329.99585	95.68669	0.37777
42	25.092	VB	0.0488	16.73351	5.95315	0.01916
43	25.748	BB	0.0579	24.97294	6.94974	0.02859
44	26.190	BB	0.1179	100.41134	11.06613	0.11495
45	26.504	BV	0.0793	22.20285	4.68580	0.02542
46	26.690	VV	0.0558	55.52874	14.78054	0.06357
47	26.953	VV	0.0929	9049.90527	1448.77441	10.35997
48	27.086	VV	0.0489	25.73771	8.12959	0.02946
49	27.236	VB	0.0799	26.51117	5.16590	0.03035
50	27.700	BB	0.1086	1.31112e4	1808.15527	15.00920
51	28.267	BB	0.1047	31.77199	4.83285	0.03637
52	29.198	BB	0.0778	19.95416	4.32693	0.02284
53	29.727	BB	0.0546	40.24356	11.01305	0.04607
54	29.970	BB	0.0569	800.04236	228.20430	0.91586
55	30.354	BV	0.0907	62.55996	9.76570	0.07162
56	30.615	VB	0.0788	4908.68896	973.99939	5.61927
57	31.115	BB	0.0830	4084.00513	807.90045	4.67521
58	31.474	BV	0.0967	44.90445	6.82831	0.05140
59	31.745	VV	0.0555	224.36992	66.25658	0.25685
60	32.080	VB	0.0564	393.95950	113.64165	0.45099
61	32.781	BV	0.0578	47.62545	12.14368	0.05452

Peak #	RetTime [min]	Type	Width [min]	Area [pA*s]	Height [pA]	Area %
62	32.880	VV	0.0750	77.22112	14.28902	0.08840
63	33.106	VV	0.0609	134.07045	34.84560	0.15348
64	33.191	VV	0.0653	89.84067	19.67765	0.10285
65	33.411	VB	0.0573	144.21884	40.72263	0.16510
66	34.435	BB	0.0608	18.03441	5.15359	0.02065

Totals : 8.73545e4 1.64300e4

=====

*** End of Report ***