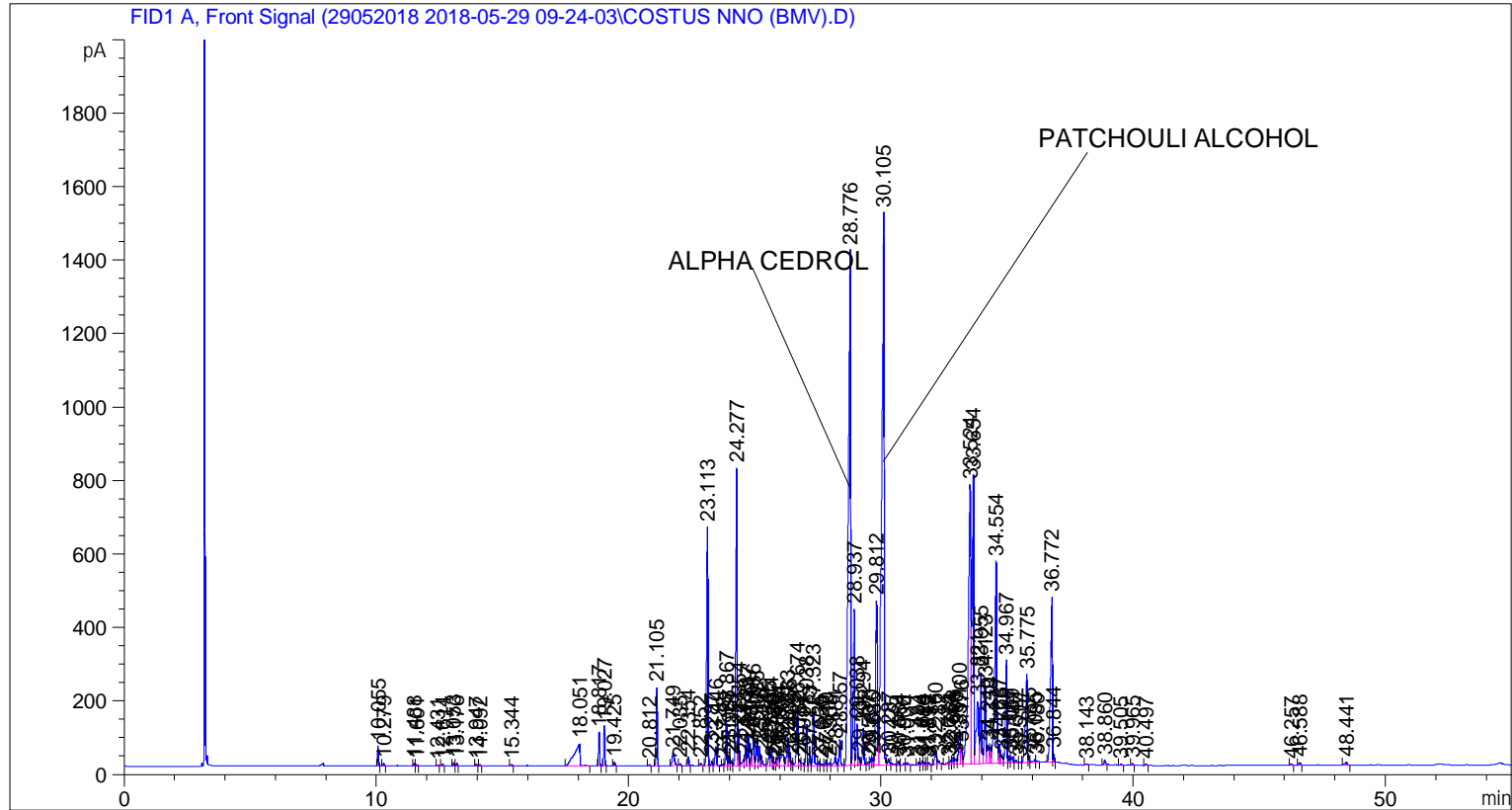


```

=====
Acq. Operator   : SYSTEM                               Seq. Line :    6
Acq. Instrument : BMV_NEW_GC_7820                     Location  : Vial 106
Injection Date  : 5/29/2018 3:17:50 PM                Inj       :    1
                                                    Inj Volume: 0.5 µl

Acq. Method     : C:\CHEM32\2\DATA\29052018 2018-05-29 09-24-03\UNIVERSAL F.M
Last changed    : 5/29/2018 9:24:08 AM by SYSTEM
Analysis Method : C:\CHEM32\2\DATA\29052018 2018-05-29 09-24-03\UNIVERSAL F.M (Sequence
Method)
Last changed    : 5/31/2018 3:15:25 PM by SYSTEM
                  (modified after loading)
Additional Info  : Peak(s) manually integrated
  
```



=====  
 Area Percent Report  
 =====

```

Sorted By      :      Signal
Multiplier     :      1.0000
Dilution       :      1.0000
Do not use Multiplier & Dilution Factor with ISTDs
  
```

Signal 1: FID1 A, Front Signal

Peak #	RetTime [min]	Type	Width [min]	Area [pA*s]	Height [pA]	Area %
1	10.055	BB	0.0422	146.76228	54.81918	0.24479
2	10.279	BB	0.0427	22.38701	8.24105	0.03734
3	11.488	BV	0.0436	19.40130	6.93449	0.03236
4	11.601	VB	0.0441	12.16870	4.29213	0.02030
5	12.431	BB	0.0426	6.65863	2.38471	0.01111
6	12.614	BB	0.0432	16.28815	5.90318	0.02717

Sample Name: COSTUS NNO (BMV)

Peak #	RetTime [min]	Type	Width [min]	Area [pA*s]	Height [pA]	Area %
7	13.053	BB	0.0425	26.02804	9.33819	0.04341
8	13.176	BB	0.0459	19.24107	6.61630	0.03209
9	13.947	BB	0.0496	16.41256	4.95658	0.02738
10	14.092	BB	0.0457	10.88108	3.65334	0.01815
11	15.344	BB	0.0519	13.77045	3.92336	0.02297
12	18.051	BB	0.1917	961.98785	60.77868	1.60455
13	18.817	BB	0.0476	272.70959	92.04839	0.45487
14	19.027	BB	0.0464	323.98999	109.83780	0.54040
15	19.425	BB	0.0459	29.79720	10.24143	0.04970
16	20.812	BB	0.0507	12.66903	3.92153	0.02113
17	21.105	BB	0.0480	658.42670	213.30641	1.09822
18	21.749	BB	0.0885	208.39900	33.52913	0.34760
19	22.035	BB	0.0463	17.01543	5.78044	0.02838
20	22.354	BB	0.0493	75.60731	24.32211	0.12611
21	22.852	BB	0.0530	20.83583	6.07245	0.03475
22	23.113	BB	0.0531	2234.91211	650.47198	3.72772
23	23.287	BV	0.0512	43.13905	13.18719	0.07195
24	23.446	VB	0.0746	228.00609	50.54560	0.38030
25	23.748	BV	0.0535	16.34284	4.94739	0.02726
26	23.867	VV	0.0498	408.05710	129.39180	0.68062
27	23.967	VV	0.0544	83.10883	23.44621	0.13862
28	24.078	VV	0.0565	50.37907	13.20472	0.08403
29	24.277	VV	0.0503	2941.40332	810.72290	4.90612
30	24.354	VV	0.0463	286.34732	97.48547	0.47761
31	24.548	VV	0.0811	97.50404	16.45368	0.16263
32	24.629	VV	0.0492	178.37413	55.91934	0.29752
33	24.717	VV	0.0547	313.39218	89.77993	0.52272
34	24.860	VV	0.0485	134.03659	42.80513	0.22357
35	24.936	VV	0.0548	330.71558	92.24949	0.55162
36	25.075	VV	0.0547	261.57227	73.11317	0.43629
37	25.182	VV	0.0512	174.97212	53.42595	0.29184
38	25.256	VB	0.0582	110.13164	27.22205	0.18369
39	25.565	BV	0.0569	176.75587	45.92249	0.29482
40	25.644	VV	0.0502	195.11794	58.06282	0.32545
41	25.720	VV	0.0409	28.10342	9.97659	0.04688
42	25.786	VV	0.0485	34.54641	10.20207	0.05762
43	25.873	VV	0.0452	56.29902	18.64665	0.09390
44	25.934	VV	0.0510	124.62279	37.24302	0.20786
45	26.083	VV	0.1096	272.79294	30.12443	0.45501
46	26.283	VV	0.0622	314.79941	77.76028	0.52507
47	26.366	VV	0.0514	174.92162	51.75875	0.29176
48	26.469	VV	0.0525	44.48056	12.49884	0.07419
49	26.674	VV	0.0589	607.99652	151.34608	1.01411
50	26.762	VV	0.0585	63.48446	16.29099	0.10589
51	26.901	VV	0.0697	38.49108	7.65329	0.06420
52	27.038	VV	0.0501	356.54974	112.21793	0.59471
53	27.173	VV	0.0480	103.54520	33.52258	0.17271
54	27.323	VV	0.0592	568.13995	146.74408	0.94763
55	27.536	VV	0.0586	41.94022	10.49805	0.06995
56	27.650	VV	0.0568	19.08958	4.96999	0.03184
57	27.810	VV	0.0518	48.27870	14.51886	0.08053
58	27.958	VV	0.0714	40.81676	8.15671	0.06808
59	28.181	VV	0.0695	120.15859	24.38830	0.20042
60	28.357	VV	0.0550	255.30779	70.98441	0.42584

Sample Name: COSTUS NNO (BMV)

Peak #	RetTime [min]	Type	Width [min]	Area [pA*s]	Height [pA]	Area %
61	28.776	VV	0.0782	8316.44434	1401.10107	13.87142
62	28.937	VV	0.0535	1591.19263	426.35321	2.65403
63	29.038	VV	0.0564	409.28534	112.65707	0.68267
64	29.136	VV	0.0653	97.52894	22.59953	0.16267
65	29.294	VV	0.0603	411.59119	101.51614	0.68651
66	29.507	VV	0.0944	62.44378	9.79191	0.10415
67	29.610	VV	0.0594	86.06064	22.11815	0.14354
68	29.685	VV	0.0451	50.85207	16.43243	0.08482
69	29.812	VV	0.0808	2335.67163	448.18109	3.89579
70	30.105	VV	0.0824	9579.59570	1502.38293	15.97830
71	30.287	VV	0.0753	91.60850	18.02719	0.15280
72	30.425	VV	0.1024	42.57809	5.43592	0.07102
73	30.684	VV	0.0537	45.81453	12.82128	0.07642
74	30.906	VV	0.0588	23.70837	5.78311	0.03954
75	31.034	VV	0.0775	43.97839	7.48812	0.07335
76	31.484	BV	0.0664	36.86609	8.53210	0.06149
77	31.624	VV	0.0542	43.60878	11.77919	0.07274
78	31.719	VV	0.0647	36.68350	8.44617	0.06119
79	31.819	VV	0.0527	21.00191	6.02447	0.03503
80	31.892	VB	0.0661	32.19816	6.93766	0.05370
81	32.160	BV	0.0817	209.88829	39.65935	0.35008
82	32.282	VB	0.0554	34.44495	9.26943	0.05745
83	32.674	BV	0.0843	42.38628	6.74261	0.07070
84	32.764	VV	0.0623	46.58401	11.49838	0.07770
85	32.863	VV	0.0571	71.74679	19.42537	0.11967
86	32.966	VV	0.0714	74.38943	14.85843	0.12408
87	33.100	VV	0.0691	421.02188	90.71098	0.70224
88	33.176	VV	0.0537	162.75909	45.53760	0.27147
89	33.524	VV	0.0921	5741.56104	760.07947	9.57664
90	33.654	VV	0.0572	3241.07764	784.86548	5.40596
91	33.821	VV	0.0917	1198.54053	169.04115	1.99911
92	33.955	VV	0.0573	960.53766	247.36948	1.60213
93	34.123	VV	0.0575	880.28937	221.08476	1.46828
94	34.240	VV	0.0718	256.58942	49.22986	0.42798
95	34.338	VV	0.0624	194.62798	44.15693	0.32463
96	34.554	VV	0.0756	3085.54028	548.59338	5.14653
97	34.687	VV	0.0567	193.28470	51.59777	0.32239
98	34.776	VV	0.0672	109.24558	21.16209	0.18222
99	34.967	VV	0.0585	1068.46216	280.43213	1.78214
100	35.087	VV	0.0578	78.97278	20.09709	0.13172
101	35.189	VV	0.0620	72.86256	16.98660	0.12153
102	35.340	VV	0.0612	27.56326	6.81333	0.04597
103	35.517	VV	0.0489	8.16749	2.39060	0.01362
104	35.775	VV	0.0742	1305.32007	241.13188	2.17721
105	35.855	VV	0.0427	51.08809	18.22817	0.08521
106	36.095	VV	0.0799	47.40680	8.02977	0.07907
107	36.180	VB	0.0698	19.74989	4.05917	0.03294
108	36.772	BV	0.0677	2259.46924	448.86633	3.76868
109	36.844	VB	0.0395	55.61044	22.01760	0.09276
110	38.143	BB	0.0526	9.34050	2.75279	0.01558
111	38.860	BB	0.0679	57.91469	13.01854	0.09660
112	39.505	BB	0.0598	13.64170	3.47634	0.02275
113	39.965	BB	0.0520	16.99628	5.07954	0.02835
114	40.497	BB	0.0568	15.42348	4.20518	0.02573

Peak #	RetTime [min]	Type	Width [min]	Area [pA*s]	Height [pA]	Area %
115	46.257	BB	0.0590	15.88956	4.31489	0.02650
116	46.588	BB	0.0585	29.20352	7.65855	0.04871
117	48.441	BB	0.0822	47.41593	8.11505	0.07909

Totals :                                   5.99538e4  1.22757e4

=====  
\*\*\* End of Report \*\*\*