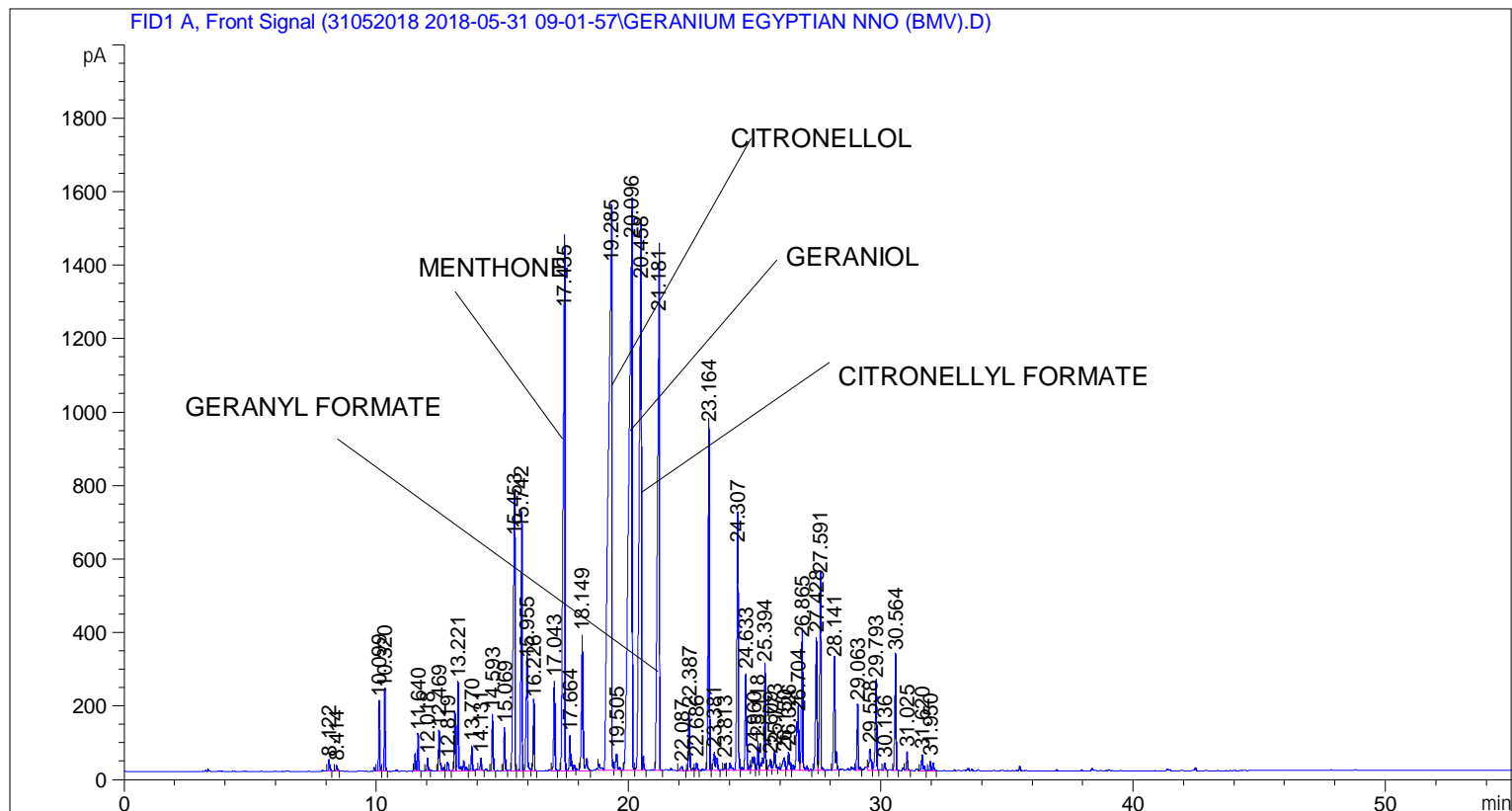


```

=====
Acq. Operator   : SYSTEM                               Seq. Line :    1
Acq. Instrument : BMV_NEW_GC_7820                     Location  : Vial 101
Injection Date  : 5/31/2018 9:15:18 AM                Inj       :    1
                                                    Inj Volume: 0.5 µl

Acq. Method    : C:\CHEM32\2\DATA\31052018 2018-05-31 09-01-57\UNIVERSAL F.M
Last changed   : 5/31/2018 9:02:02 AM by SYSTEM
Analysis Method : C:\CHEM32\2\DATA\31052018 2018-05-31 09-01-57\UNIVERSAL F.M (Sequence
Method)
Last changed   : 6/6/2018 12:12:54 PM by SYSTEM
                (modified after loading)
  
```



=====  
 Area Percent Report  
 =====

```

Sorted By      :      Signal
Multiplier     :      1.0000
Dilution       :      1.0000
Do not use Multiplier & Dilution Factor with ISTDs
  
```

Signal 1: FID1 A, Front Signal

Peak #	RetTime [min]	Type	Width [min]	Area [pA*s]	Height [pA]	Area %
1	8.122	BB	0.0633	100.09841	24.66395	0.11301
2	8.414	BB	0.0673	55.34999	12.59670	0.06249
3	10.099	BV	0.0520	514.12305	187.38997	0.58043
4	10.320	VB	0.0497	611.98737	211.77695	0.69092
5	11.640	BB	0.0661	420.17548	97.82516	0.47437
6	12.018	BB	0.0606	118.14758	33.93587	0.13339
7	12.469	BV	0.0613	407.18948	104.92289	0.45971

Peak #	RetTime [min]	Type	Width [min]	Area [pA*s]	Height [pA]	Area %
8	12.819	VB	0.0768	103.52831	21.26950	0.11688
9	13.221	BB	0.0844	1312.88123	237.73955	1.48221
10	13.770	BB	0.0567	208.44319	66.24606	0.23533
11	14.131	BB	0.0566	103.09657	32.82932	0.11639
12	14.593	BB	0.0560	467.47644	151.38600	0.52777
13	15.069	BB	0.0601	397.21906	115.43696	0.44845
14	15.453	BV	0.0895	3511.50439	625.77612	3.96440
15	15.742	VV	0.0630	2373.12280	643.40424	2.67919
16	15.955	VB	0.0708	1268.74451	291.39517	1.43238
17	16.226	BB	0.0511	558.57825	185.52580	0.63062
18	17.043	BB	0.0605	833.88556	240.13782	0.94144
19	17.435	BV	0.0904	7517.12207	1245.26599	8.48664
20	17.664	VB	0.0719	413.68417	93.01733	0.46704
21	18.149	BB	0.0771	1666.80872	365.93643	1.88178
22	19.285	BV	0.1429	1.44167e4	1368.76538	16.27611
23	19.505	VB	0.0898	249.99503	44.32632	0.28224
24	20.096	BV	0.1380	1.40003e4	1432.69189	15.80594
25	20.458	VB	0.0984	8429.00488	1321.90173	9.51613
26	21.181	BB	0.0900	7403.91846	1234.74988	8.35883
27	22.087	BB	0.0977	60.35020	10.10649	0.06813
28	22.387	BV	0.0632	580.60559	156.75560	0.65549
29	22.686	VB	0.0588	77.31259	21.06318	0.08728
30	23.164	BV	0.0606	3244.47046	932.99731	3.66292
31	23.381	VB	0.1172	371.53665	46.53057	0.41946
32	23.813	BV	0.0590	68.88476	18.68855	0.07777
33	24.307	VV	0.0721	2698.95825	604.44879	3.04705
34	24.633	VB	0.0682	1071.90356	259.53070	1.21015
35	24.960	BV	0.1417	279.95258	30.89065	0.31606
36	25.118	VV	0.0589	251.80748	75.56908	0.28428
37	25.394	VV	0.0661	1109.36401	280.97296	1.25244
38	25.609	VV	0.0826	157.07019	29.26912	0.17733
39	25.773	VB	0.0766	252.38565	52.02235	0.28494
40	26.150	BV	0.1152	250.16969	35.08257	0.28244
41	26.326	VV	0.0726	243.26671	50.13027	0.27464
42	26.704	VV	0.1225	1075.03186	144.92622	1.21368
43	26.865	VB	0.0672	1399.88684	346.09558	1.58044
44	27.428	BV	0.0712	1457.86108	360.16806	1.64589
45	27.591	VB	0.0613	1846.23389	521.76587	2.08435
46	28.141	BB	0.0681	1204.68286	291.94183	1.36006
47	29.063	BB	0.0611	613.94916	174.41197	0.69313
48	29.558	BV	0.0834	293.03027	57.52413	0.33082
49	29.793	VB	0.0636	888.27325	237.46925	1.00284
50	30.136	BB	0.0654	76.92193	19.76519	0.08684
51	30.564	BB	0.0589	1038.45935	311.20709	1.17239
52	31.025	BB	0.0568	150.66789	47.76095	0.17010
53	31.620	BB	0.0688	183.19292	43.82992	0.20682
54	31.950	BB	0.0924	166.67970	25.45935	0.18818

Totals : 8.85760e4 1.55773e4

=====  
\*\*\* End of Report \*\*\*