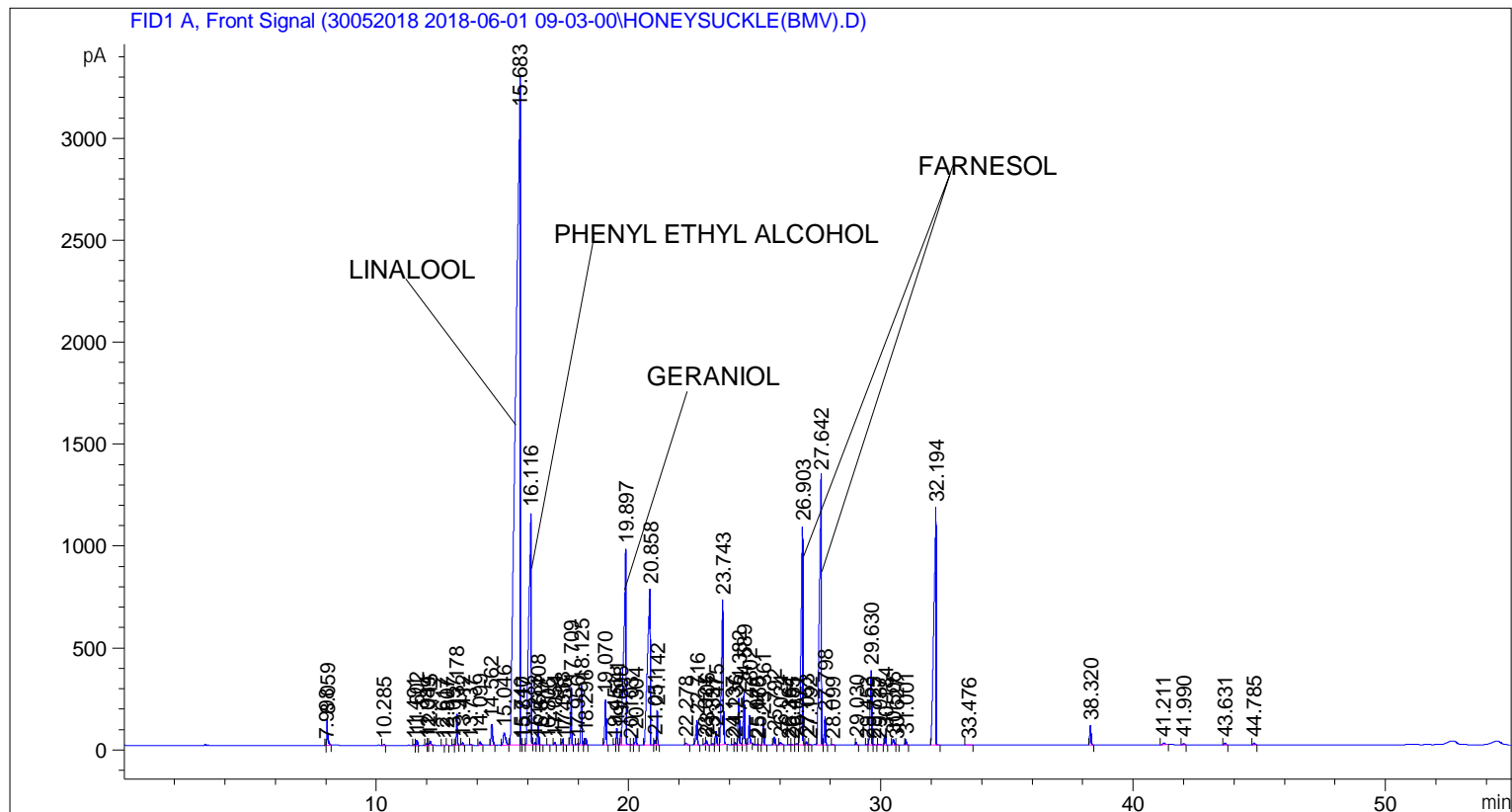


```

=====
Acq. Operator   : SYSTEM                               Seq. Line :    7
Acq. Instrument : BMV_NEW_GC_7820                     Location  : Vial 107
Injection Date  : 6/1/2018 3:57:44 PM                 Inj       :    1
                                                    Inj Volume: 0.5 µl

Method         : C:\CHEM32\2\DATA\30052018 2018-06-01 09-03-00\UNIVERSAL F.M (Sequence
                Method)
Last changed   : 6/1/2018 9:03:07 AM by SYSTEM
Additional Info : Peak(s) manually integrated
  
```



=====
 Area Percent Report
 =====

```

Sorted By      : Signal
Multiplier     : 1.0000
Dilution       : 1.0000
Do not use Multiplier & Dilution Factor with ISTDs
  
```

Signal 1: FID1 A, Front Signal

Peak #	RetTime [min]	Type	Width [min]	Area [pA*s]	Height [pA]	Area %
1	7.998	BV	0.0232	1.85159	1.33339	0.00199
2	8.059	VB	0.0440	377.26907	125.69760	0.40488
3	10.285	BB	0.0431	17.15083	6.23649	0.01841
4	11.491	BV	0.0423	13.14448	4.90218	0.01411
5	11.602	VB	0.0435	75.24732	26.97201	0.08076
6	11.984	BV	0.0448	25.82983	8.91931	0.02772
7	12.049	VV	0.0350	7.92553	3.42720	0.00851
8	12.115	VB	0.0578	77.93126	19.86995	0.08364
9	12.617	BB	0.0397	4.26434	1.73133	0.00458

Sample Name: HONEYSUCKLE(BMV)

Peak #	RetTime [min]	Type	Width [min]	Area [pA*s]	Height [pA]	Area %
10	12.807	BB	0.0402	4.18060	1.67116	0.00449
11	13.057	BV	0.0402	11.47048	4.42546	0.01231
12	13.178	VB	0.0432	427.49155	154.65814	0.45878
13	13.412	BB	0.0420	35.71841	13.44545	0.03833
14	13.737	BB	0.0446	16.76604	5.82331	0.01799
15	14.099	BB	0.0596	73.06426	18.29887	0.07841
16	14.562	BB	0.0661	433.48907	102.90065	0.46522
17	15.046	BB	0.0907	406.03720	60.96215	0.43576
18	15.683	BV	0.1471	3.89349e4	3289.84277	41.78481
19	15.740	VV	0.0321	9.98463	4.63917	0.01072
20	15.817	VV	0.0551	14.22529	4.04287	0.01527
21	16.116	VV	0.0829	7317.90674	1139.49988	7.85355
22	16.283	VV	0.0580	60.18084	14.63509	0.06459
23	16.408	VB	0.0424	305.21893	113.46555	0.32756
24	16.517	BB	0.0481	6.97535	2.31826	0.00749
25	16.806	BB	0.0448	6.79381	2.27770	0.00729
26	17.054	BB	0.0437	34.72911	12.79419	0.03727
27	17.358	BV	0.0437	81.54484	29.09141	0.08751
28	17.456	VB	0.0405	5.65654	2.24001	0.00607
29	17.709	BB	0.0462	823.01361	280.36002	0.88326
30	17.956	BV	0.0476	18.19246	5.79582	0.01952
31	18.125	VB	0.0486	887.44757	290.90305	0.95241
32	18.296	BB	0.0453	107.55182	36.53206	0.11542
33	19.070	BB	0.0497	741.92627	223.65193	0.79623
34	19.451	BV	0.0407	10.05641	3.82303	0.01079
35	19.541	VB	0.0457	237.34030	82.20728	0.25471
36	19.698	BV	0.0408	148.19504	56.22157	0.15904
37	19.897	VB	0.0796	5819.35547	961.81873	6.24531
38	20.103	BV	0.0634	17.04651	3.86916	0.01829
39	20.304	VB	0.0496	164.73386	49.73014	0.17679
40	20.858	BV	0.0892	5521.04346	764.68622	5.92516
41	21.051	VV	0.0416	60.01852	22.12591	0.06441
42	21.142	VB	0.0400	427.89175	166.33389	0.45921
43	22.278	BB	0.0726	51.33644	9.71515	0.05509
44	22.716	BB	0.0577	482.90121	120.72328	0.51825
45	23.027	BV	0.0442	21.51274	7.34751	0.02309
46	23.106	VB	0.0550	76.86282	20.86336	0.08249
47	23.337	BV	0.0471	20.79666	6.91435	0.02232
48	23.475	VB	0.0625	246.87387	64.73795	0.26494
49	23.743	BB	0.0645	3373.18286	709.35132	3.62009
50	24.137	BV	0.0439	7.26349	2.57903	0.00780
51	24.236	VV	0.0497	43.88559	13.95290	0.04710
52	24.382	VV	0.0515	760.77124	230.52377	0.81646
53	24.589	VV	0.0571	925.05695	256.15768	0.99277
54	24.802	VB	0.0482	442.61429	138.96481	0.47501
55	25.078	BV	0.0393	5.56553	2.29369	0.00597
56	25.160	VB	0.0271	2.24766	1.73207	0.00241
57	25.361	BB	0.0515	393.28165	122.33616	0.42207
58	25.792	BB	0.0485	132.96959	41.36875	0.14270
59	26.024	BB	0.0753	64.86079	12.15217	0.06961
60	26.364	BV	0.0476	13.99160	4.72059	0.01502
61	26.485	VB	0.0521	12.82675	3.83141	0.01377
62	26.671	BV	0.0640	39.67613	8.74158	0.04258
63	26.903	VV	0.0669	5030.56152	1069.99451	5.39878

Sample Name: HONEYSUCKLE(BMV)

Peak #	RetTime [min]	Type	Width [min]	Area [pA*s]	Height [pA]	Area %
64	27.053	VV	0.0491	56.08680	17.64787	0.06019
65	27.192	VV	0.0582	14.30270	3.86348	0.01535
66	27.642	BV	0.0708	7227.92529	1321.89673	7.75698
67	27.798	VB	0.0529	464.01706	139.08487	0.49798
68	28.099	BB	0.0443	10.44989	3.77742	0.01121
69	29.030	BB	0.0468	41.16672	13.39774	0.04418
70	29.453	BV	0.0455	10.85789	3.67178	0.01165
71	29.630	VV	0.0541	1360.25024	367.78952	1.45982
72	29.725	VB	0.0585	13.32140	3.48938	0.01430
73	29.937	BB	0.0780	29.23248	5.09192	0.03137
74	30.184	BB	0.0481	163.64156	52.93414	0.17562
75	30.506	BV	0.0678	121.20498	28.38221	0.13008
76	30.627	VB	0.0523	9.87216	2.93198	0.01059
77	31.001	BB	0.0522	92.33213	27.47138	0.09909
78	32.194	BB	0.0773	7111.83057	1164.47827	7.63239
79	33.476	BB	0.1066	20.11202	2.48043	0.02158
80	38.320	BB	0.0531	335.04413	95.08953	0.35957
81	41.211	BB	0.0960	69.32194	8.98941	0.07440
82	41.990	BB	0.0644	29.59737	7.27784	0.03176
83	43.631	BB	0.0645	39.20528	9.24662	0.04207
84	44.785	BB	0.0629	39.99738	9.15879	0.04293

Totals : 9.31796e4 1.42613e4

=====
*** End of Report ***