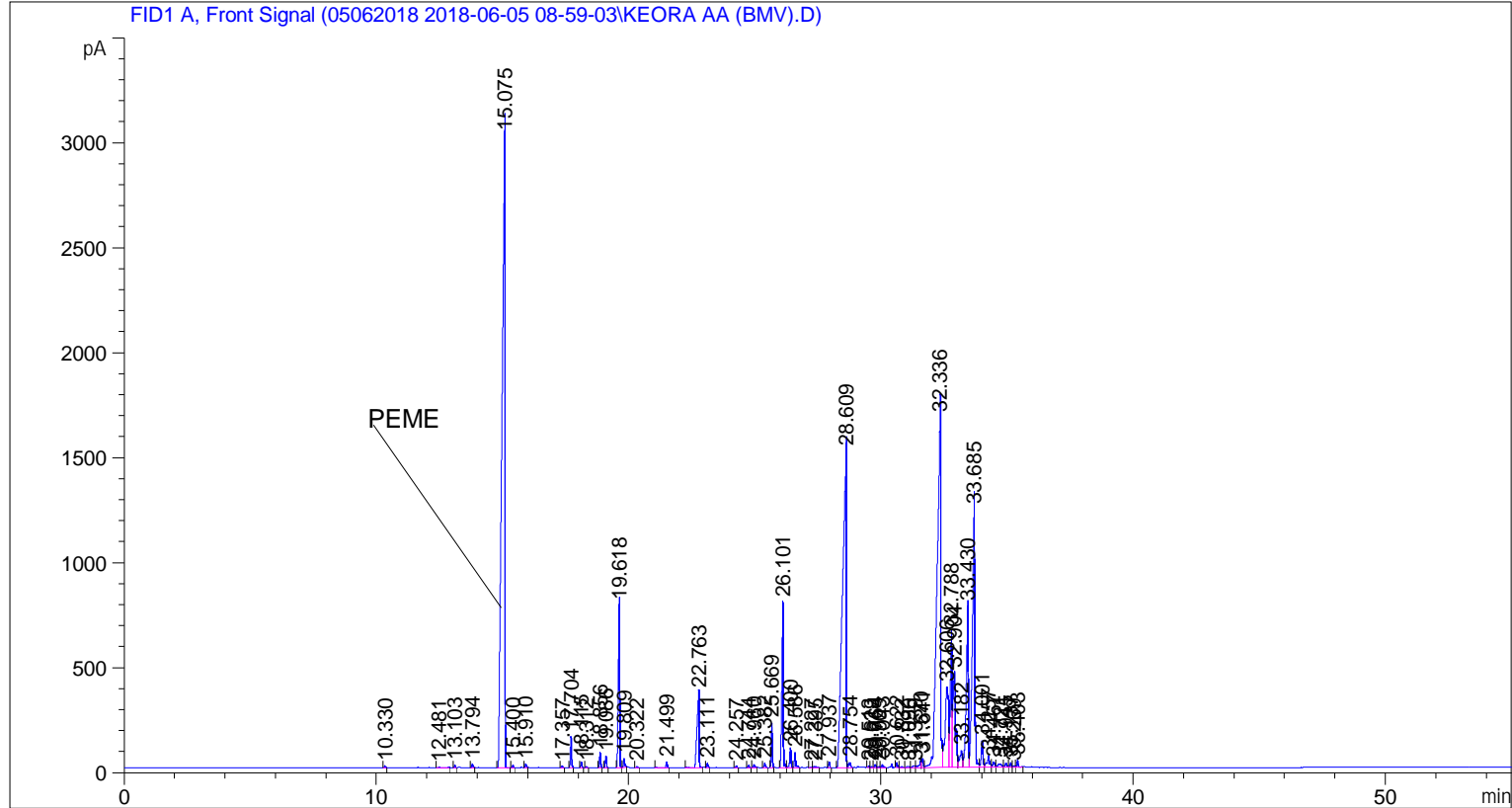


```

=====
Acq. Operator   : SYSTEM                               Seq. Line :    1
Acq. Instrument : BMV_NEW_GC_7820                     Location  : Vial 101
Injection Date  : 6/5/2018 9:12:48 AM                 Inj       :    1
                                                    Inj Volume: 0.5 µl

Acq. Method     : C:\CHEM32\2\DATA\05062018 2018-06-05 08-59-03\UNIVERSAL F.M
Last changed    : 6/5/2018 8:59:09 AM by SYSTEM
Analysis Method : C:\CHEM32\2\DATA\05062018 2018-06-05 08-59-03\UNIVERSAL F.M (Sequence
Method)
Last changed    : 6/7/2018 11:25:28 AM by SYSTEM
                  (modified after loading)
  
```



=====
 Area Percent Report
 =====

```

Sorted By      :      Signal
Multiplier     :      1.0000
Dilution      :      1.0000
Do not use Multiplier & Dilution Factor with ISTDs
  
```

Signal 1: FID1 A, Front Signal

Peak #	RetTime [min]	Type	Width [min]	Area [pA*s]	Height [pA]	Area %
1	10.330	BB	0.0474	26.58289	9.28334	0.02747
2	12.481	BB	0.0822	24.70095	4.10604	0.02552
3	13.103	BB	0.0462	38.94769	13.29360	0.04025
4	13.794	BB	0.0513	55.89226	16.59679	0.05775
5	15.075	BB	0.1132	2.61100e4	3008.70264	26.98011
6	15.400	BB	0.0456	31.14986	10.82423	0.03219
7	15.910	BB	0.0564	67.83918	18.65976	0.07010

Sample Name: KEORA AA (BMV)

Peak #	RetTime [min]	Type	Width [min]	Area [pA*s]	Height [pA]	Area %
8	17.357	BB	0.0489	25.39510	8.49861	0.02624
9	17.704	BB	0.0496	455.72263	149.45990	0.47091
10	18.115	BB	0.0508	81.78523	25.95073	0.08451
11	18.312	BB	0.0477	14.30056	4.67857	0.01478
12	18.856	BB	0.0480	219.72423	75.36239	0.22705
13	19.086	BB	0.0496	167.43246	54.81492	0.17301
14	19.618	BB	0.0595	3016.94165	774.18903	3.11748
15	19.809	BB	0.0553	151.17723	42.71174	0.15622
16	20.322	BB	0.0496	14.17431	4.64665	0.01465
17	21.499	BB	0.0547	96.49695	27.66654	0.09971
18	22.763	BB	0.0827	2091.28442	355.28580	2.16098
19	23.111	BB	0.0528	69.65072	20.93938	0.07197
20	24.257	BB	0.0499	27.69322	9.00087	0.02862
21	24.744	BB	0.0513	37.19617	11.62969	0.03844
22	24.960	BB	0.0658	56.33258	12.68085	0.05821
23	25.382	BB	0.0585	77.63244	19.49590	0.08022
24	25.669	BB	0.0503	660.86566	212.29521	0.68289
25	26.101	BV	0.0625	3132.17944	785.73462	3.23656
26	26.400	VB	0.0534	323.31522	95.65831	0.33409
27	26.586	BB	0.0558	253.50951	70.69080	0.26196
28	27.227	BV	0.0566	15.08169	4.33285	0.01558
29	27.395	VB	0.1078	50.11798	6.23062	0.05179
30	27.937	BB	0.0501	85.53004	27.67007	0.08838
31	28.609	BV	0.1390	1.66608e4	1506.40332	17.21606
32	28.754	VB	0.0789	120.92460	23.97052	0.12495
33	29.513	BV	0.0490	26.43782	8.80160	0.02732
34	29.629	VV	0.0542	13.57821	3.93835	0.01403
35	29.764	VV	0.0640	52.77496	13.39094	0.05453
36	29.909	VV	0.0488	12.91322	4.32702	0.01334
37	30.043	VB	0.0668	59.41367	13.13575	0.06139
38	30.622	BB	0.0505	68.73567	21.98497	0.07103
39	30.832	BV	0.0622	16.79414	3.90354	0.01735
40	31.090	VV	0.0849	39.21405	6.45307	0.04052
41	31.339	VV	0.0919	62.44022	8.89736	0.06452
42	31.570	VV	0.0699	205.98137	41.53440	0.21285
43	31.641	VV	0.0580	165.97253	44.05401	0.17150
44	32.336	VV	0.1347	1.69441e4	1666.07837	17.50872
45	32.606	VV	0.1335	3717.14746	382.13721	3.84102
46	32.788	VV	0.0747	3165.80273	651.78278	3.27131
47	32.904	VV	0.1067	3260.81372	449.37357	3.36948
48	33.182	VV	0.0987	582.28583	80.20378	0.60169
49	33.430	VV	0.0793	4163.79541	767.55750	4.30256
50	33.685	VV	0.0960	8398.79199	1225.04297	8.67869
51	34.001	VV	0.0662	543.99548	126.48185	0.56212
52	34.257	VV	0.0957	372.47726	53.18514	0.38489
53	34.467	VV	0.0804	134.96783	24.45148	0.13947
54	34.721	VV	0.1259	165.58983	16.96310	0.17111
55	34.945	VV	0.0793	98.62058	18.76493	0.10191
56	35.137	VV	0.0588	77.57012	20.21561	0.08016
57	35.269	VV	0.0683	28.42562	6.34183	0.02937
58	35.403	VB	0.0633	135.93532	32.17458	0.14047

Totals : 9.67749e4 1.31026e4

Sample Name: KEORA AA (BMV)

=====

*** End of Report ***