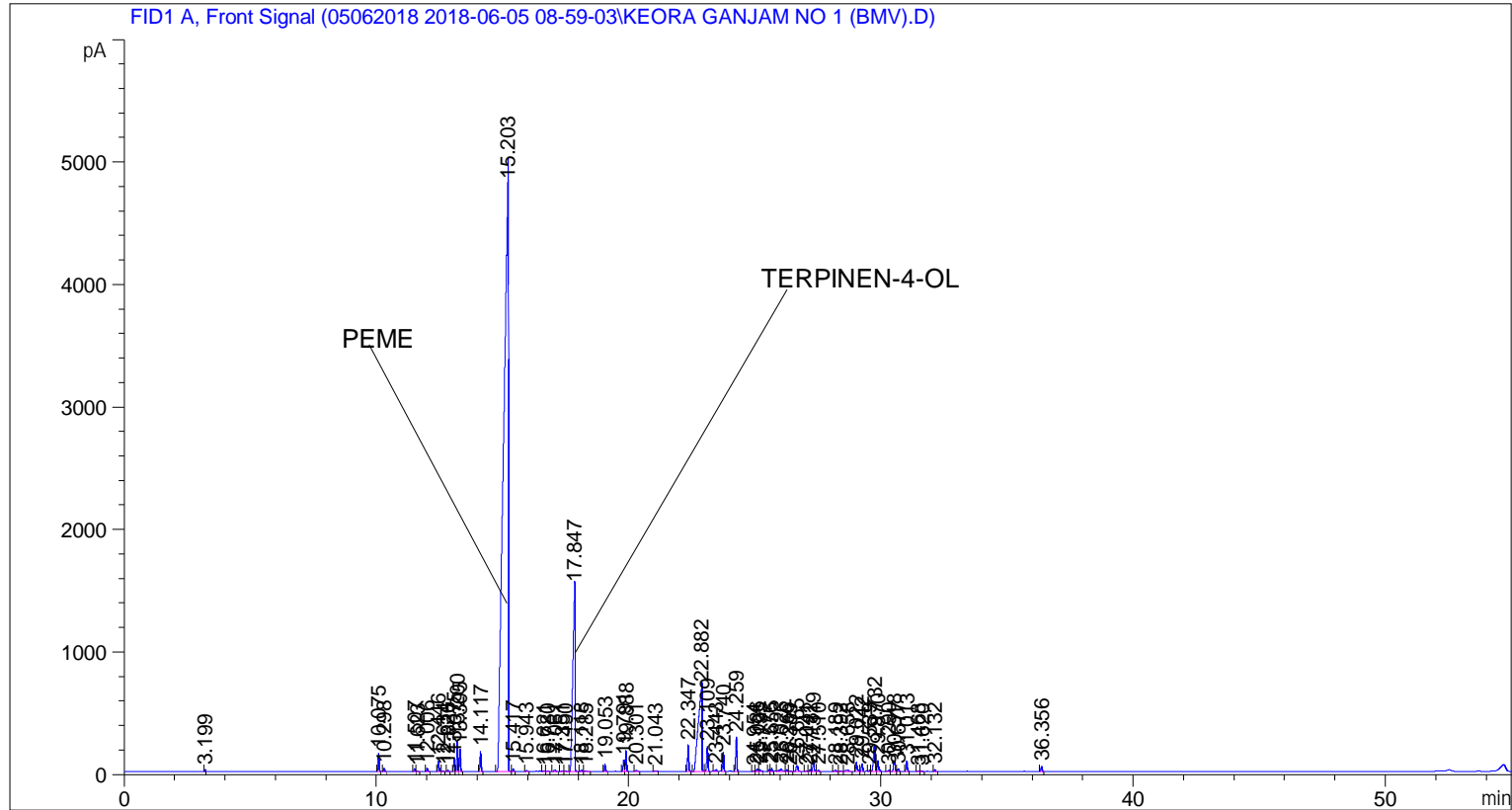


```
=====
Acq. Operator   : SYSTEM                               Seq. Line :    3
Acq. Instrument : BMV_NEW_GC_7820                     Location  : Vial 103
Injection Date  : 6/5/2018 11:27:05 AM                Inj       :    1
                                                    Inj Volume: 0.5 µl

Acq. Method     : C:\CHEM32\2\DATA\05062018 2018-06-05 08-59-03\UNIVERSAL F.M
Last changed    : 6/5/2018 8:59:09 AM by SYSTEM
Analysis Method : C:\CHEM32\2\DATA\05062018 2018-06-05 08-59-03\UNIVERSAL F.M (Sequence
Method)
Last changed    : 6/7/2018 11:23:37 AM by SYSTEM
                (modified after loading)

Additional Info  : Peak(s) manually integrated
```



=====  
 Area Percent Report  
 =====

```
Sorted By      :      Signal
Multiplier     :      1.0000
Dilution       :      1.0000
Do not use Multiplier & Dilution Factor with ISTDs
```

Signal 1: FID1 A, Front Signal

Peak #	RetTime [min]	Type	Width [min]	Area [pA*s]	Height [pA]	Area %
1	3.199	BB	0.0265	21.07008	13.30308	0.02269
2	10.075	BB	0.0433	402.50806	149.96721	0.43340
3	10.298	BB	0.0441	72.25423	26.29143	0.07780
4	11.507	BV	0.0444	67.36478	24.23629	0.07253
5	11.623	VB	0.0457	11.08614	3.84277	0.01194
6	12.006	BB	0.0557	97.25015	27.20865	0.10471

Sample Name: KEORA GANJAM NO 1 (BMV)

Peak #	RetTime [min]	Type	Width [min]	Area [pA*s]	Height [pA]	Area %
7	12.446	BB	0.0454	240.33182	83.84803	0.25878
8	12.634	BB	0.0474	25.31381	8.84417	0.02726
9	12.826	BB	0.0454	30.40836	10.60978	0.03274
10	13.075	BV	0.0488	303.78415	101.93298	0.32710
11	13.200	VV	0.0458	724.52075	249.76616	0.78012
12	13.305	VB	0.0457	529.91046	183.45332	0.57058
13	14.117	BB	0.0492	490.56888	162.79913	0.52822
14	15.203	BV	0.1699	6.49502e4	4797.69727	69.93456
15	15.417	VB	0.0471	67.20011	23.66517	0.07236
16	15.943	BB	0.0582	31.94191	8.43017	0.03439
17	16.621	BV	0.0720	29.89228	6.70936	0.03219
18	16.780	VB	0.0618	20.15388	4.91926	0.02170
19	17.061	BB	0.0860	64.04762	11.66980	0.06896
20	17.351	BV	0.0612	28.00455	7.23554	0.03015
21	17.490	VV	0.0629	27.35872	6.79934	0.02946
22	17.847	VB	0.0864	9320.80957	1502.54309	10.03610
23	18.118	BB	0.0565	42.21793	11.57941	0.04546
24	18.285	BB	0.0618	23.64691	5.76749	0.02546
25	19.053	BB	0.0466	178.52231	60.13355	0.19222
26	19.791	BV	0.0496	278.34781	91.13209	0.29971
27	19.888	VB	0.0495	508.41562	167.15770	0.54743
28	20.301	BB	0.0629	43.72362	10.02755	0.04708
29	21.043	BB	0.0706	34.37019	7.08310	0.03701
30	22.347	BB	0.0502	660.95477	213.24052	0.71168
31	22.882	BV	0.1347	7337.85547	686.68323	7.90097
32	23.109	VB	0.0528	671.07721	201.64600	0.72258
33	23.443	BB	0.0664	51.09168	12.30436	0.05501
34	23.740	BB	0.0466	477.23038	161.11540	0.51385
35	24.259	BB	0.0521	883.21417	270.29822	0.95099
36	24.954	BV	0.0547	21.23622	6.39442	0.02287
37	25.086	VV	0.0527	68.15585	20.54193	0.07339
38	25.195	VB	0.0602	57.58931	13.95259	0.06201
39	25.576	BV	0.0489	39.31340	12.44153	0.04233
40	25.655	VB	0.0525	75.78096	22.96475	0.08160
41	26.026	BV	0.0989	160.34860	22.03740	0.17265
42	26.266	VV	0.0532	46.03964	14.43447	0.04957
43	26.389	VB	0.0572	25.67149	6.92728	0.02764
44	26.665	BB	0.0844	241.12929	46.54753	0.25963
45	27.041	BV	0.0617	20.21263	5.39224	0.02176
46	27.182	VV	0.0496	51.54438	16.87366	0.05550
47	27.319	VB	0.0551	315.42834	94.14478	0.33963
48	27.510	BB	0.0613	44.56753	10.98923	0.04799
49	28.189	BB	0.0664	56.48748	12.57267	0.06082
50	28.392	BB	0.0547	18.05235	5.44479	0.01944
51	28.658	BB	0.1116	87.07964	10.84896	0.09376
52	29.022	BV	0.0583	280.32559	73.82029	0.30184
53	29.242	VB	0.0532	210.68068	62.68259	0.22685
54	29.539	BV	0.0492	25.98669	8.60869	0.02798
55	29.732	VV	0.0709	988.23657	217.81306	1.06408
56	29.870	VB	0.0569	311.69073	84.75968	0.33561
57	30.290	BV	0.0715	30.88189	6.99693	0.03325
58	30.518	VV	0.0706	362.77792	83.56384	0.39062
59	30.677	VB	0.0533	76.82078	22.80607	0.08272
60	31.013	BB	0.0557	288.57059	84.76296	0.31072

Peak #	RetTime [min]	Type	Width [min]	Area [pA*s]	Height [pA]	Area %
61	31.468	BV	0.0570	15.63433	4.45326	0.01683
62	31.620	VB	0.0568	18.91615	5.15696	0.02037
63	32.132	BB	0.0552	47.22637	14.07223	0.05085
64	36.356	BB	0.0532	139.78700	41.57755	0.15051

Totals :                                   9.28728e4 1.03475e4

=====  
\*\*\* End of Report \*\*\*