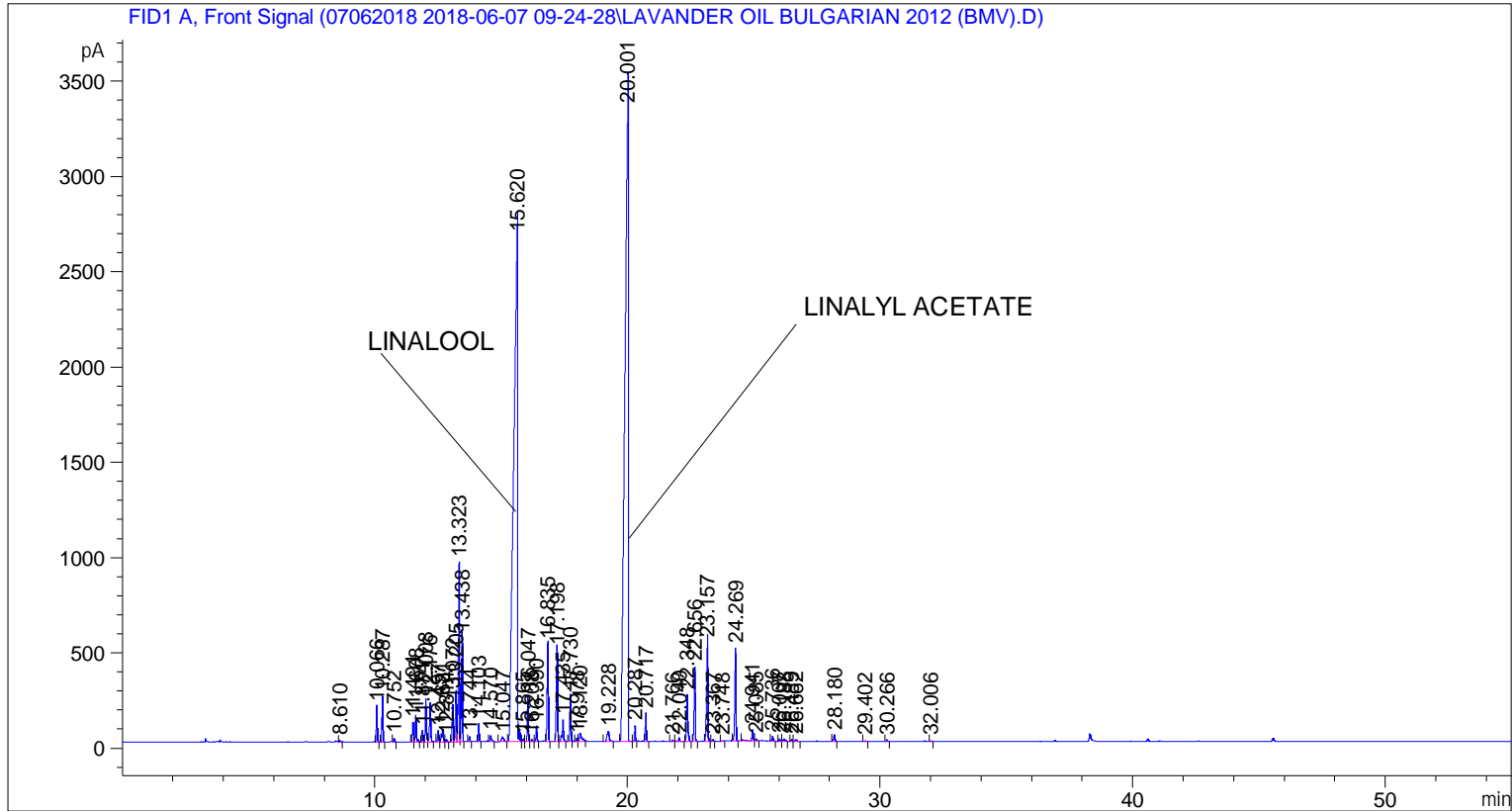


```

=====
Acq. Operator   : SYSTEM                               Seq. Line :    4
Acq. Instrument : BMV_NEW_GC_7820                     Location  : Vial 104
Injection Date  : 6/7/2018 12:59:06 PM                Inj       :    1
                                                    Inj Volume: 0.5 µl

Acq. Method    : C:\CHEM32\2\DATA\07062018 2018-06-07 09-24-28\UNIVERSAL F.M
Last changed   : 6/7/2018 9:24:33 AM by SYSTEM
Analysis Method: C:\CHEM32\2\DATA\07062018 2018-06-07 09-24-28\UNIVERSAL F.M (Sequence
Method)
Last changed   : 6/11/2018 12:18:49 PM by SYSTEM
                (modified after loading)
Additional Info : Peak(s) manually integrated
  
```



=====
 Area Percent Report
 =====

```

Sorted By      :      Signal
Multiplier     :      1.0000
Dilution      :      1.0000
Do not use Multiplier & Dilution Factor with ISTDs
  
```

Signal 1: FID1 A, Front Signal

Peak #	RetTime [min]	Type	Width [min]	Area [pA*s]	Height [pA]	Area %
1	8.610	BB	0.0459	28.19754	9.69585	0.03301
2	10.066	BB	0.0441	505.78387	184.09380	0.59206
3	10.287	BB	0.0436	648.56342	239.22353	0.75920
4	10.752	BB	0.0459	51.26632	17.63849	0.06001
5	11.494	BV	0.0496	280.33829	97.48388	0.32816
6	11.608	VB	0.0476	419.48227	137.44109	0.49104

Peak #	RetTime [min]	Type	Width [min]	Area [pA*s]	Height [pA]	Area %
7	11.874	BV	0.0449	160.31105	56.86549	0.18766
8	12.008	VV	0.0485	696.36884	222.37651	0.81516
9	12.176	VB	0.0557	696.78088	204.63208	0.81564
10	12.497	BV	0.0498	181.80545	56.13435	0.21282
11	12.681	VV	0.0689	317.93607	65.23080	0.37217
12	12.814	VB	0.0515	35.63197	11.71273	0.04171
13	13.072	BV	0.0493	610.28644	190.91508	0.71439
14	13.205	VV	0.0576	955.14319	267.64001	1.11808
15	13.323	VV	0.0526	2952.87256	940.37457	3.45660
16	13.438	VB	0.0477	1672.42725	546.16754	1.95772
17	13.744	BB	0.0462	77.95094	26.60169	0.09125
18	14.103	BB	0.0447	261.01544	93.04996	0.30554
19	14.570	BB	0.0643	134.62576	32.51736	0.15759
20	15.047	BB	0.1072	152.32205	22.45145	0.17831
21	15.620	BV	0.1497	2.94081e4	2645.63062	34.42481
22	15.865	VV	0.0543	44.43960	13.52032	0.05202
23	16.047	VB	0.0464	706.38873	239.82196	0.82689
24	16.208	BV	0.0579	37.21792	9.45473	0.04357
25	16.390	VB	0.0454	229.84030	80.19659	0.26905
26	16.835	BB	0.0507	1693.69409	510.24353	1.98262
27	17.198	BV	0.0562	1643.52332	477.30240	1.92389
28	17.435	VB	0.0589	452.22134	112.48093	0.52936
29	17.730	BB	0.0481	748.19446	242.00102	0.87583
30	17.978	BV	0.0510	52.59539	15.74017	0.06157
31	18.120	VB	0.0874	269.03244	43.95124	0.31493
32	19.228	BB	0.1059	343.25195	54.22471	0.40181
33	20.001	BV	0.1172	3.16422e4	3508.93652	37.04001
34	20.287	VB	0.0454	236.57327	82.70852	0.27693
35	20.717	BB	0.0513	438.82965	145.18188	0.51369
36	21.766	BV	0.0633	27.84582	6.32728	0.03260
37	22.040	VB	0.0661	79.64723	18.55322	0.09323
38	22.348	BB	0.0594	901.09937	242.07552	1.05482
39	22.656	BB	0.0530	1239.85144	390.50027	1.45135
40	23.157	BB	0.0604	1972.37476	518.05701	2.30884
41	23.367	BB	0.0531	31.87257	9.04072	0.03731
42	23.748	BB	0.0464	8.10803	3.11309	0.00949
43	24.269	BB	0.0554	1640.47620	486.36273	1.92032
44	24.941	BV	0.0580	224.44928	56.93205	0.26274
45	25.085	VB	0.0611	36.07476	9.32320	0.04223
46	25.736	BB	0.0545	78.15524	23.70937	0.09149
47	26.007	BB	0.0550	43.39430	11.78584	0.05080
48	26.188	BB	0.0737	64.17593	12.97926	0.07512
49	26.489	BV	0.0497	36.77340	11.38651	0.04305
50	26.662	VB	0.0926	53.47289	9.09839	0.06259
51	28.180	BB	0.0549	130.00735	35.33886	0.15218
52	29.402	BB	0.0621	24.37412	6.17502	0.02853
53	30.266	BB	0.0540	30.92947	9.49300	0.03621
54	32.006	BB	0.0507	18.80921	5.66939	0.02202

Totals : 8.54272e4 1.34696e4

*** End of Report ***