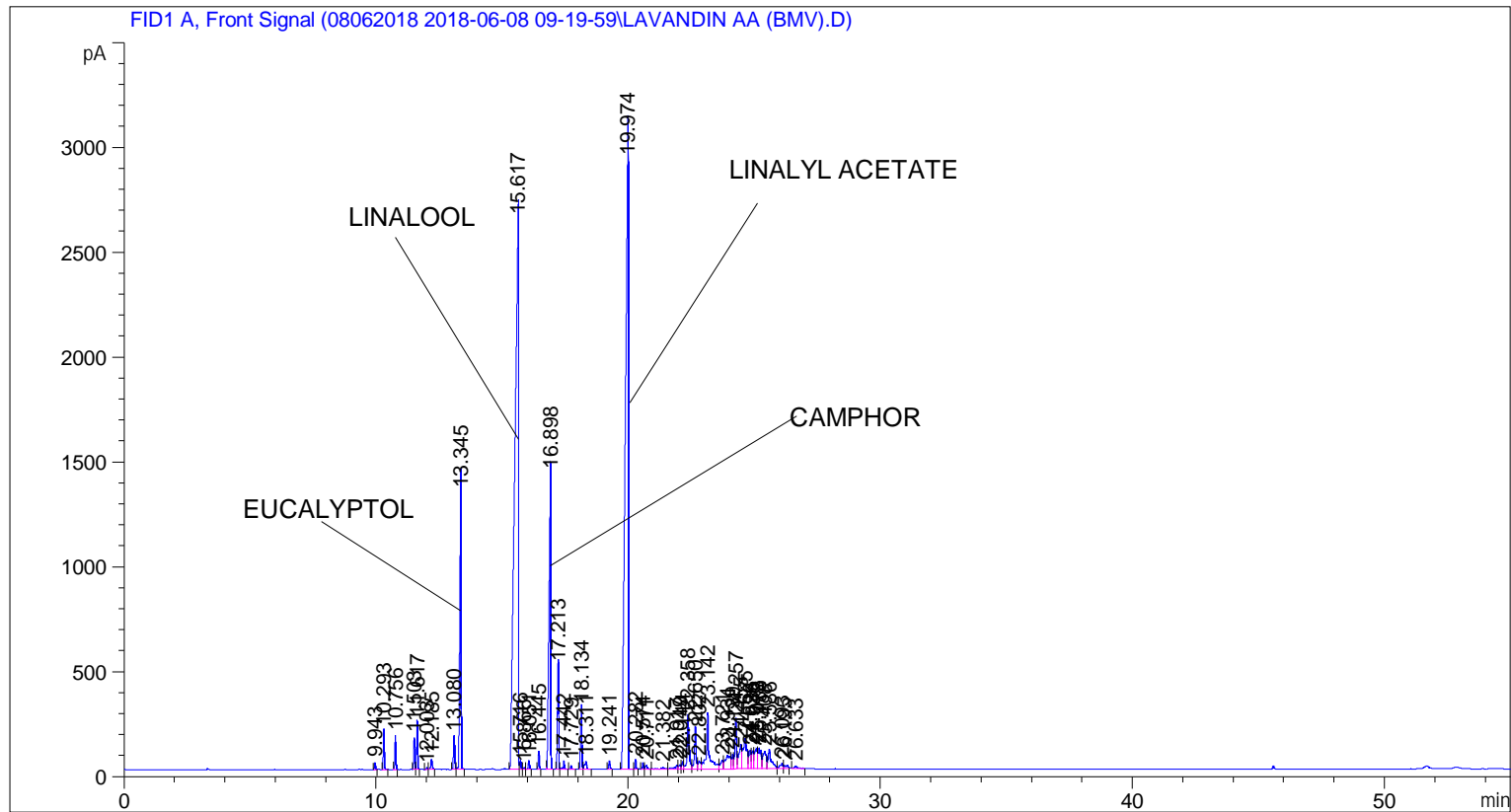


```

=====
Acq. Operator   : SYSTEM                               Seq. Line :    3
Acq. Instrument : BMV_NEW_GC_7820                     Location  : Vial 103
Injection Date  : 6/8/2018 11:47:05 AM                 Inj       :    1
                                                    Inj Volume: 0.5 µl

Acq. Method    : C:\CHEM32\2\DATA\08062018 2018-06-08 09-19-59\UNIVERSAL F.M
Last changed   : 6/8/2018 9:20:05 AM by SYSTEM
Analysis Method : C:\CHEM32\2\DATA\08062018 2018-06-08 09-19-59\UNIVERSAL F.M (Sequence
Method)
Last changed   : 6/11/2018 12:41:02 PM by SYSTEM
                (modified after loading)
Additional Info : Peak(s) manually integrated
  
```



=====  
 Area Percent Report  
 =====

```

Sorted By      :      Signal
Multiplier     :      1.0000
Dilution       :      1.0000
Do not use Multiplier & Dilution Factor with ISTDs
  
```

Signal 1: FID1 A, Front Signal

Peak #	RetTime [min]	Type	Width [min]	Area [pA*s]	Height [pA]	Area %
1	9.943	BB	0.0441	88.43375	32.14367	0.10198
2	10.293	BB	0.0492	523.53674	183.99736	0.60373
3	10.756	BB	0.0451	457.56131	161.06744	0.52765
4	11.503	BV	0.0447	418.16791	149.02908	0.48222
5	11.617	VB	0.0447	638.84180	228.12473	0.73669
6	12.003	BV	0.0522	27.75281	8.95227	0.03200

Sample Name: LAVANDIN AA (BMV)

Peak #	RetTime [min]	Type	Width [min]	Area [pA*s]	Height [pA]	Area %
7	12.185	VB	0.0624	191.84442	48.23561	0.22123
8	13.080	BV	0.0560	544.80432	158.71275	0.62825
9	13.345	VB	0.0632	5328.57910	1316.44714	6.14476
10	15.617	BV	0.1344	2.74773e4	2618.65625	31.68608
11	15.716	VB	0.0492	138.04332	43.28992	0.15919
12	15.866	BV	0.0530	29.04746	9.16771	0.03350
13	16.051	VB	0.0578	151.66284	42.34327	0.17489
14	16.445	BB	0.0467	253.95988	85.35154	0.29286
15	16.898	BB	0.0703	7034.19824	1408.39966	8.11163
16	17.213	BV	0.0567	1699.64050	487.61978	1.95998
17	17.442	VB	0.0609	145.51697	37.82149	0.16781
18	17.729	BB	0.0503	61.13089	18.61661	0.07049
19	18.134	BV	0.0618	1149.10535	292.60599	1.32511
20	18.311	VB	0.0794	216.61285	37.50862	0.24979
21	19.241	BB	0.0622	146.07614	36.90754	0.16845
22	19.974	BB	0.1149	2.46174e4	2902.94629	28.38801
23	20.282	BB	0.0511	141.81142	47.14979	0.16353
24	20.574	BV	0.0515	93.42677	30.67220	0.10774
25	20.711	VB	0.0929	103.38690	17.50950	0.11922
26	21.382	BV	0.1495	97.13503	8.49068	0.11201
27	21.917	VV	0.1171	170.59988	18.93381	0.19673
28	22.049	VV	0.0917	126.13972	20.83740	0.14546
29	22.144	VV	0.0640	162.26315	36.41667	0.18712
30	22.358	VV	0.0758	1379.19019	252.11287	1.59044
31	22.650	VV	0.0680	875.89697	196.69830	1.01006
32	22.802	VV	0.0964	267.73123	36.99521	0.30874
33	23.142	VV	0.1076	2187.76465	266.98529	2.52287
34	23.721	VV	0.1036	311.85822	41.54945	0.35963
35	23.934	VV	0.1895	925.76538	63.72262	1.06757
36	24.139	VV	0.0742	352.62473	70.70064	0.40664
37	24.257	VV	0.0695	1090.29883	237.84113	1.25730
38	24.455	VV	0.0975	804.11633	115.14017	0.92728
39	24.625	VV	0.1447	1603.54834	145.31325	1.84917
40	24.826	VV	0.0954	548.63416	89.62303	0.63267
41	24.938	VV	0.0816	487.46283	86.69469	0.56213
42	25.073	VV	0.1090	771.69617	96.77578	0.88990
43	25.188	VV	0.0973	751.87366	98.25628	0.86704
44	25.408	VV	0.1264	803.96136	81.98537	0.92710
45	25.586	VV	0.1281	845.57373	91.22131	0.97509
46	26.093	VV	0.1085	202.53072	25.54977	0.23355
47	26.195	VB	0.1311	153.89015	15.07684	0.17746
48	26.633	BB	0.1390	119.02354	11.28907	0.13725

Totals : 8.67174e4 1.25115e4

\*\*\* End of Report \*\*\*