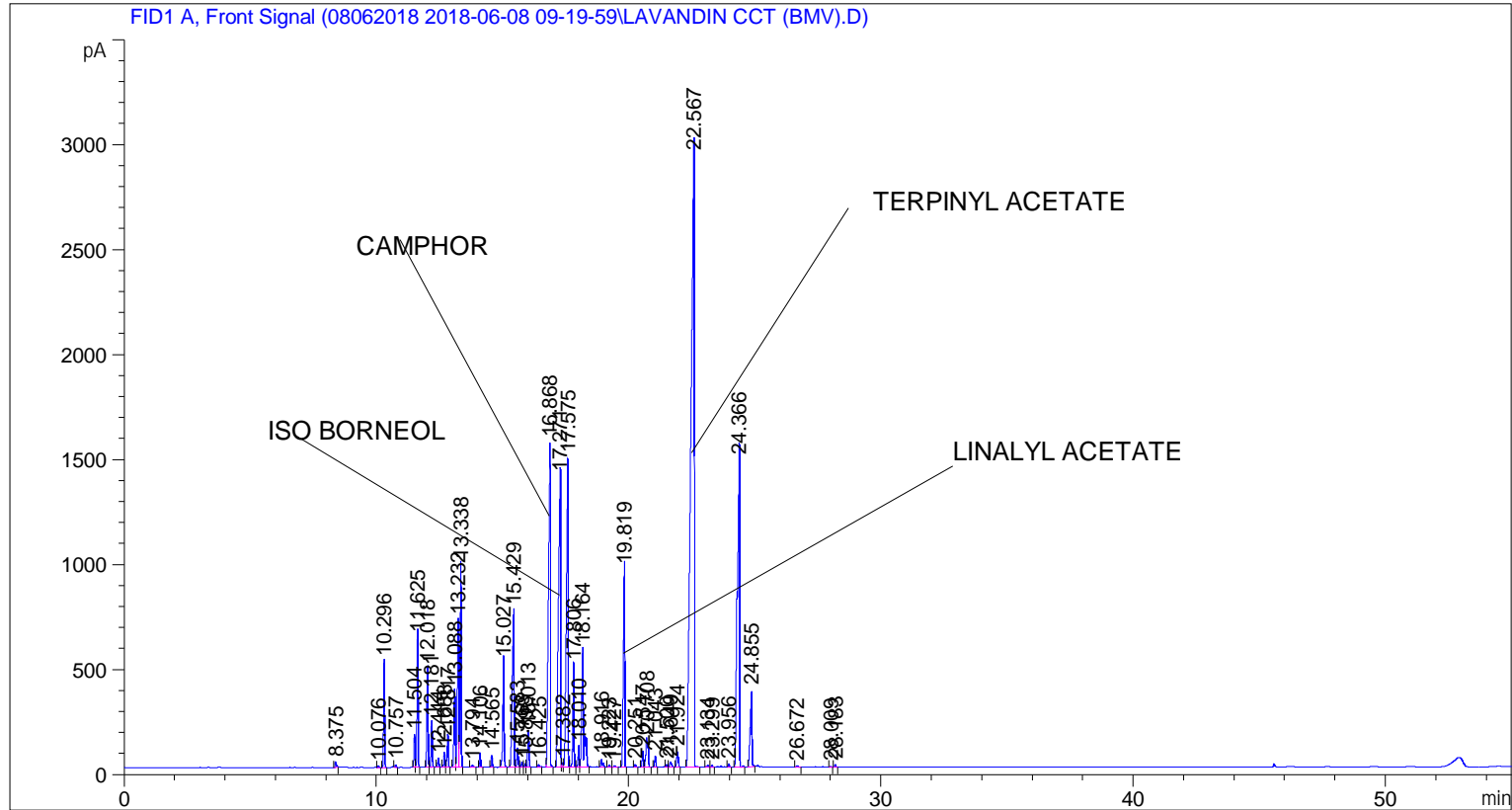


```

=====
Acq. Operator   : SYSTEM                               Seq. Line :    4
Acq. Instrument : BMV_NEW_GC_7820                     Location  : Vial 104
Injection Date  : 6/8/2018 12:54:08 PM                 Inj       :    1
                                                    Inj Volume: 0.5 µl

Acq. Method    : C:\CHEM32\2\DATA\08062018 2018-06-08 09-19-59\UNIVERSAL F.M
Last changed   : 6/8/2018 9:20:05 AM by SYSTEM
Analysis Method: C:\CHEM32\2\DATA\08062018 2018-06-08 09-19-59\UNIVERSAL F.M (Sequence
Method)
Last changed   : 6/11/2018 12:41:02 PM by SYSTEM
                (modified after loading)
Additional Info : Peak(s) manually integrated
  
```



=====  
 Area Percent Report  
 =====

```

Sorted By       :      Signal
Multiplier      :      1.0000
Dilution        :      1.0000
Do not use Multiplier & Dilution Factor with ISTDs
  
```

Signal 1: FID1 A, Front Signal

Peak #	RetTime [min]	Type	Width [min]	Area [pA*s]	Height [pA]	Area %
1	8.375	BB	0.0575	93.97182	24.10408	0.10031
2	10.076	BB	0.0438	23.13109	8.49477	0.02469
3	10.296	BB	0.0487	1413.04028	504.71808	1.50831
4	10.757	BB	0.0482	37.55106	12.11126	0.04008
5	11.504	BV	0.0516	474.59454	155.52646	0.50659
6	11.625	VB	0.0474	1870.90894	617.02789	1.99705

Sample Name: LAVANDIN CCT (BMV)

Peak #	RetTime [min]	Type	Width [min]	Area [pA*s]	Height [pA]	Area %
7	12.018	BV	0.0548	1582.36426	475.47153	1.68905
8	12.181	VB	0.0483	680.52484	218.64250	0.72641
9	12.444	BB	0.0479	131.00229	42.63070	0.13983
10	12.688	BV	0.0502	233.18958	71.24399	0.24891
11	12.817	VB	0.0549	514.87506	154.50150	0.54959
12	13.088	BV	0.0620	1334.89661	370.64163	1.42490
13	13.232	VV	0.0622	2786.76172	703.50244	2.97466
14	13.338	VB	0.0469	2891.86328	965.72406	3.08684
15	13.794	BB	0.0743	49.42173	9.89586	0.05275
16	14.106	BB	0.0492	191.02303	67.12146	0.20390
17	14.565	BB	0.0489	177.93193	56.26190	0.18993
18	15.027	BB	0.0567	1731.33191	496.69330	1.84807
19	15.429	BV	0.0865	3754.33667	748.13062	4.00747
20	15.583	VV	0.0572	315.22693	89.27021	0.33648
21	15.763	VV	0.0620	100.31313	25.42980	0.10708
22	15.898	VV	0.0597	53.10625	14.17002	0.05669
23	16.013	VB	0.0585	623.38391	171.21558	0.66541
24	16.425	BB	0.0665	49.28871	11.38996	0.05261
25	16.868	BB	0.0718	7924.55762	1545.96851	8.45886
26	17.271	BV	0.0977	8265.73438	1383.50598	8.82304
27	17.382	VV	0.0542	76.83336	21.22112	0.08201
28	17.575	VV	0.0691	7206.83838	1473.73511	7.69275
29	17.806	VV	0.0479	1488.85425	483.69275	1.58924
30	18.010	VV	0.0468	294.82687	98.86224	0.31471
31	18.164	VB	0.0794	3029.47729	557.90411	3.23374
32	18.916	BB	0.0675	171.25940	36.00411	0.18281
33	19.223	BB	0.0520	36.64539	10.68553	0.03912
34	19.427	BB	0.0587	30.81728	8.41368	0.03290
35	19.819	BB	0.0625	3748.87695	941.19269	4.00164
36	20.251	BB	0.0545	46.76795	14.16571	0.04992
37	20.547	BV	0.0535	240.85262	74.86127	0.25709
38	20.708	VB	0.0834	838.53497	136.95810	0.89507
39	21.043	BB	0.0564	181.59236	52.41973	0.19384
40	21.500	BV	0.0523	42.43118	12.28593	0.04529
41	21.649	VB	0.0839	129.33803	23.62963	0.13806
42	21.924	BB	0.0655	307.18661	72.41225	0.32790
43	22.567	BB	0.1258	2.74340e4	2914.59473	29.28368
44	23.134	BV	0.0695	45.89602	10.01462	0.04899
45	23.299	VB	0.0522	33.12809	9.61548	0.03536
46	23.956	BB	0.0505	47.44884	16.04929	0.05065
47	24.366	BB	0.0851	9153.52246	1461.79480	9.77069
48	24.855	BB	0.0747	1696.93091	362.12436	1.81134
49	26.672	BB	0.0847	34.32018	6.59607	0.03663
50	28.009	BB	0.0538	18.09456	5.04732	0.01931
51	28.183	BB	0.0566	44.71178	12.85899	0.04773

Totals : 9.36835e4 1.77605e4

\*\*\* End of Report \*\*\*