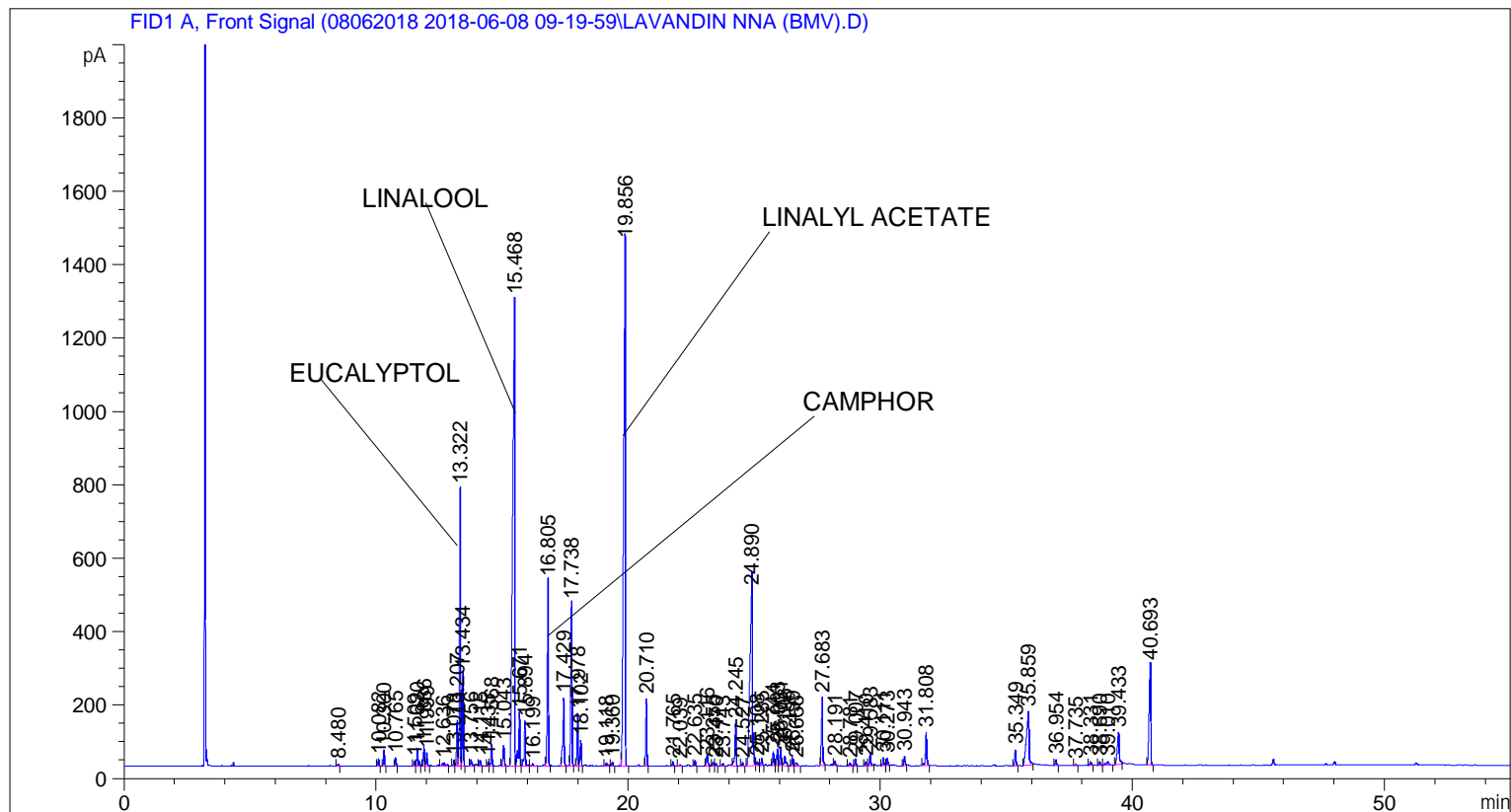


```

=====
Acq. Operator   : SYSTEM                               Seq. Line :    2
Acq. Instrument : BMV_NEW_GC_7820                     Location  : Vial 102
Injection Date  : 6/8/2018 10:40:20 AM                 Inj       :    1
                                                    Inj Volume: 0.5 µl

Acq. Method     : C:\CHEM32\2\DATA\08062018 2018-06-08 09-19-59\UNIVERSAL F.M
Last changed    : 6/8/2018 9:20:05 AM by SYSTEM
Analysis Method : C:\CHEM32\2\DATA\08062018 2018-06-08 09-19-59\UNIVERSAL F.M (Sequence
Method)
Last changed    : 6/11/2018 5:12:24 PM by SYSTEM
                  (modified after loading)

Additional Info  : Peak(s) manually integrated
  
```



=====
 Area Percent Report
 =====

```

Sorted By      :      Signal
Multiplier     :      1.0000
Dilution      :      1.0000
Do not use Multiplier & Dilution Factor with ISTDs
  
```

Signal 1: FID1 A, Front Signal

Peak #	RetTime [min]	Type	Width [min]	Area [pA*s]	Height [pA]	Area %
1	8.480	BB	0.0587	18.87067	4.71150	0.05447
2	10.082	BB	0.0445	54.54644	19.57948	0.15744
3	10.300	BB	0.0444	122.31426	44.11015	0.35305
4	10.765	BB	0.0453	61.73617	21.66082	0.17819
5	11.509	BV	0.0442	38.16367	13.82187	0.11016
6	11.620	VB	0.0546	170.61491	46.72584	0.49246

Sample Name: LAVANDIN NNA (BMV)

Peak #	RetTime [min]	Type	Width [min]	Area [pA*s]	Height [pA]	Area %
7	11.886	BV	0.0457	156.45137	54.10035	0.45158
8	11.999	VB	0.0535	110.90764	34.54348	0.32012
9	12.636	BB	0.1018	68.08250	8.84061	0.19651
10	13.078	BV	0.0513	46.46510	15.36781	0.13412
11	13.207	VV	0.0502	404.14819	123.40820	1.16653
12	13.322	VV	0.0513	2277.45239	753.38855	6.57363
13	13.434	VB	0.0444	704.38977	253.25369	2.03315
14	13.756	BB	0.0696	75.50911	16.44455	0.21795
15	14.115	BB	0.0494	54.50796	16.98555	0.15733
16	14.435	BV	0.0484	35.39644	11.33624	0.10217
17	14.568	VB	0.0500	191.84079	58.91410	0.55373
18	15.043	BB	0.0604	211.57140	55.58111	0.61068
19	15.468	BV	0.0862	7208.20313	1270.25684	20.80572
20	15.671	VV	0.0556	541.08032	144.82336	1.56177
21	15.894	VB	0.0567	420.74396	120.67179	1.21443
22	16.199	BB	0.0698	27.11306	5.88117	0.07826
23	16.805	BB	0.0500	1629.46045	499.70245	4.70327
24	17.429	BB	0.0575	713.61084	182.91899	2.05976
25	17.738	BB	0.0504	1446.43628	438.90665	4.17499
26	17.978	BV	0.0457	406.15485	140.70540	1.17232
27	18.102	VB	0.0484	212.84338	68.17088	0.61435
28	19.118	BB	0.0783	47.08732	8.81910	0.13591
29	19.360	BB	0.0520	29.83380	9.66077	0.08611
30	19.856	BB	0.0808	6927.89697	1424.06299	19.99665
31	20.710	BB	0.0469	539.13885	180.19684	1.55617
32	21.765	BB	0.0492	35.91021	11.27117	0.10365
33	22.039	BB	0.0566	11.18305	3.21298	0.03228
34	22.635	BB	0.0475	43.71535	14.37537	0.12618
35	23.116	BB	0.0614	126.12035	29.78345	0.36403
36	23.355	BV	0.0556	36.51703	10.76438	0.10540
37	23.470	VB	0.0519	23.55727	6.89473	0.06800
38	23.743	BB	0.0536	22.60585	7.01591	0.06525
39	24.245	BB	0.0533	400.70407	113.07558	1.15659
40	24.527	BB	0.0500	29.19066	8.96805	0.08426
41	24.890	BV	0.1127	3454.13794	476.04556	9.97001
42	25.108	VV	0.0660	44.63440	10.40748	0.12883
43	25.285	VB	0.0489	62.10474	19.64599	0.17926
44	25.744	BV	0.0523	117.58910	37.76731	0.33941
45	25.903	VV	0.0533	143.21413	44.84238	0.41337
46	26.031	VV	0.0491	157.49100	49.57250	0.45458
47	26.196	VB	0.0694	130.98697	26.60695	0.37808
48	26.499	BV	0.0481	69.33811	22.43449	0.20014
49	26.656	VB	0.0835	43.41381	8.51659	0.12531
50	27.683	BB	0.0585	668.30316	183.67122	1.92899
51	28.191	BB	0.0485	35.25980	11.26596	0.10177
52	28.781	BB	0.0770	37.99950	7.78240	0.10968
53	29.007	BB	0.0510	65.64162	19.63348	0.18947
54	29.410	BV	0.0578	38.30435	10.68982	0.11056
55	29.583	VB	0.0580	115.79433	32.15004	0.33423
56	30.111	BV	0.0581	78.73439	21.83963	0.22726
57	30.273	VB	0.0490	59.96254	18.89262	0.17308
58	30.943	BB	0.0560	95.68709	25.39322	0.27619
59	31.808	BB	0.0570	349.65881	90.58706	1.00925
60	35.349	BB	0.0551	147.25659	43.97597	0.42504

Peak #	RetTime [min]	Type	Width [min]	Area [pA*s]	Height [pA]	Area %
61	35.859	BB	0.1010	1052.30688	144.48746	3.03737
62	36.954	BB	0.0525	53.63457	15.44049	0.15481
63	37.735	BB	0.0544	13.14699	3.99763	0.03795
64	38.331	BB	0.0693	46.04696	10.07160	0.13291
65	38.690	BB	0.0601	35.98701	9.52727	0.10387
66	39.010	BB	0.1091	76.84423	9.63344	0.22180
67	39.433	BB	0.0858	483.80258	85.73473	1.39645
68	40.693	BB	0.0754	1285.93848	270.73828	3.71173

Totals : 3.46453e4 7964.26434

=====
*** End of Report ***