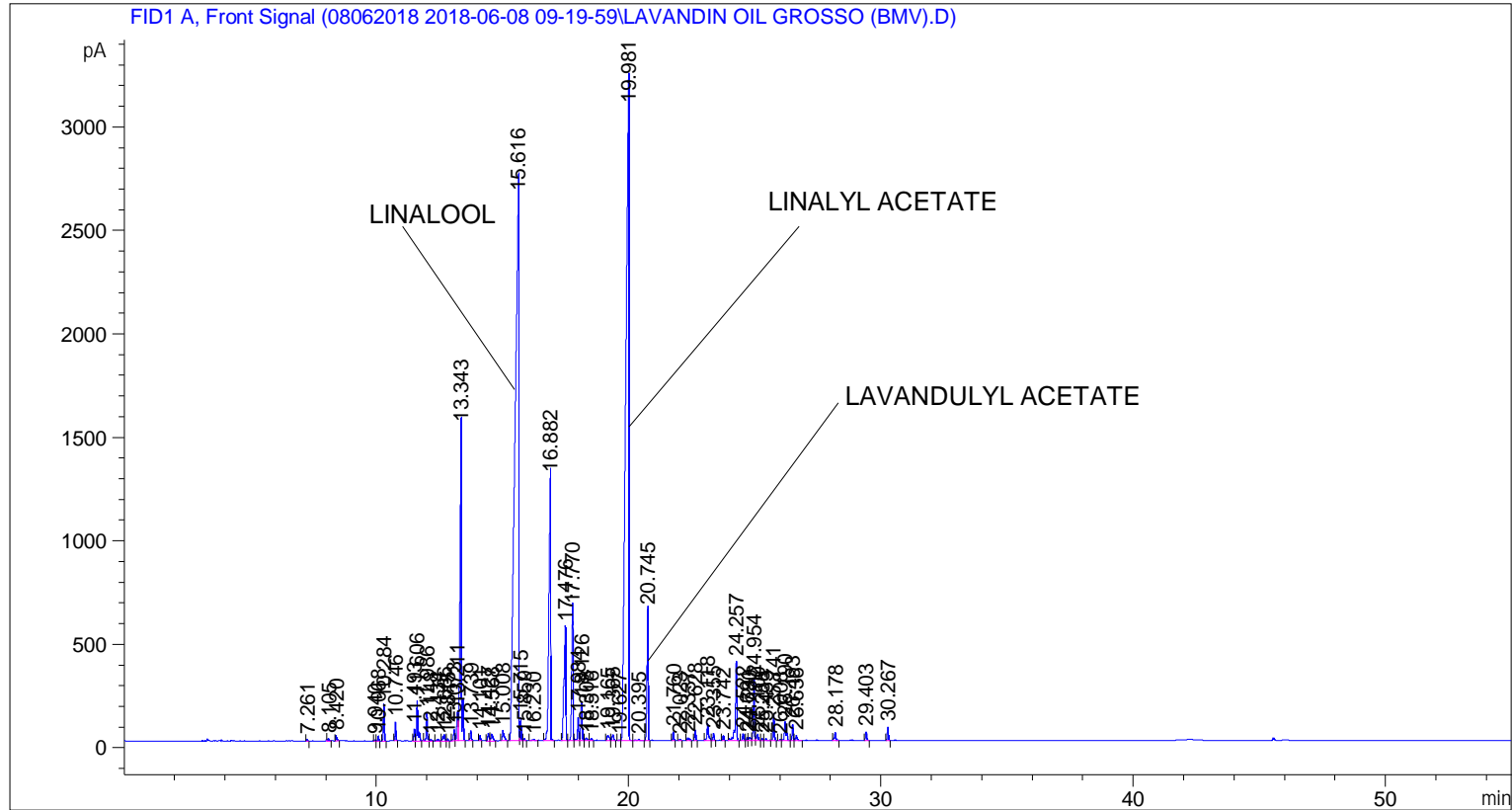


```

=====
Acq. Operator   : SYSTEM                               Seq. Line :    5
Acq. Instrument : BMV_NEW_GC_7820                     Location  : Vial 105
Injection Date  : 6/8/2018 2:01:06 PM                 Inj       :    1
                                                    Inj Volume: 0.5 µl

Acq. Method     : C:\CHEM32\2\DATA\08062018 2018-06-08 09-19-59\UNIVERSAL F.M
Last changed    : 6/8/2018 9:20:05 AM by SYSTEM
Analysis Method : C:\CHEM32\2\DATA\08062018 2018-06-08 09-19-59\UNIVERSAL F.M (Sequence
Method)
Last changed    : 6/11/2018 12:34:31 PM by SYSTEM
                (modified after loading)
Additional Info  : Peak(s) manually integrated
  
```



=====  
 Area Percent Report  
 =====

```

Sorted By       :      Signal
Multiplier      :      1.0000
Dilution       :      1.0000
Do not use Multiplier & Dilution Factor with ISTDs
  
```

Signal 1: FID1 A, Front Signal

Peak #	RetTime [min]	Type	Width [min]	Area [pA*s]	Height [pA]	Area %
1	7.261	BB	0.0434	19.44627	7.21856	0.02226
2	8.105	BB	0.0574	43.82028	10.78585	0.05016
3	8.420	BB	0.0505	90.31517	27.38171	0.10337
4	9.940	BV	0.0431	12.18776	4.57308	0.01395
5	10.068	VB	0.0432	57.15823	21.36247	0.06542
6	10.284	BB	0.0455	480.17279	177.60509	0.54959

Sample Name: LAVANDIN OIL GROSSO (BMV)

Peak #	RetTime [min]	Type	Width [min]	Area [pA*s]	Height [pA]	Area %
7	10.746	BB	0.0439	246.86583	90.28203	0.28256
8	11.493	BV	0.0443	153.99046	55.57063	0.17625
9	11.606	VB	0.0532	683.72125	193.45399	0.78257
10	11.986	BV	0.0474	407.69681	134.29584	0.46664
11	12.148	VB	0.0478	24.08226	7.42439	0.02756
12	12.434	BB	0.0757	43.36845	8.20137	0.04964
13	12.686	BV	0.0680	155.59770	32.41989	0.17809
14	12.815	VB	0.0487	27.39019	9.21560	0.03135
15	13.073	BV	0.0601	203.00644	53.74029	0.23236
16	13.211	VV	0.0615	562.87549	144.46439	0.64425
17	13.343	VB	0.0666	6569.28564	1514.88489	7.51902
18	13.739	BB	0.0489	155.76846	49.30420	0.17829
19	14.101	BB	0.0447	72.05116	25.69971	0.08247
20	14.427	BV	0.0661	153.71378	35.80501	0.17594
21	14.568	VB	0.0758	165.37250	32.28293	0.18928
22	15.008	BB	0.0706	242.52005	49.96120	0.27758
23	15.616	BV	0.1413	2.82552e4	2629.90674	32.34014
24	15.715	VB	0.0424	288.18738	110.74247	0.32985
25	15.859	BB	0.0528	29.10915	8.75054	0.03332
26	16.230	BB	0.0886	41.20212	6.61908	0.04716
27	16.882	BB	0.0819	6312.68115	1271.98218	7.22532
28	17.476	BV	0.0721	2743.10547	551.11469	3.13968
29	17.770	VV	0.0578	2375.02271	633.20612	2.71839
30	17.984	VV	0.0517	355.80167	110.10313	0.40724
31	18.126	VV	0.0596	698.38617	186.94373	0.79935
32	18.308	VB	0.0731	61.21579	12.96711	0.07007
33	18.516	BB	0.0540	26.89778	7.83880	0.03079
34	19.165	BV	0.0835	151.29271	26.15429	0.17317
35	19.365	VB	0.0652	114.87834	28.38117	0.13149
36	19.627	BV	0.0589	14.60788	3.79401	0.01672
37	19.981	VV	0.1181	2.74830e4	3141.04077	31.45631
38	20.395	VB	0.1046	54.42648	7.16792	0.06230
39	20.745	BB	0.0539	2159.20825	631.60309	2.47137
40	21.760	BB	0.0463	128.90720	43.84497	0.14754
41	22.023	BB	0.0490	22.73772	7.57580	0.02602
42	22.337	BB	0.0817	84.56155	14.15801	0.09679
43	22.628	BB	0.0495	155.71205	51.11346	0.17822
44	23.118	BV	0.0640	347.35858	81.05650	0.39758
45	23.355	VB	0.0535	108.35810	33.69778	0.12402
46	23.742	BB	0.0495	75.27962	24.76032	0.08616
47	24.257	BB	0.0602	1513.86133	382.17175	1.73272
48	24.522	BV	0.0524	111.36092	33.82940	0.12746
49	24.691	VV	0.0488	45.18223	15.15028	0.05171
50	24.780	VV	0.0719	86.68040	17.47624	0.09921
51	24.954	VV	0.0532	958.27484	285.29553	1.09682
52	25.100	VV	0.0680	139.30106	31.26118	0.15944
53	25.288	VV	0.0566	32.35389	8.86641	0.03703
54	25.433	VB	0.0768	49.16052	9.12578	0.05627
55	25.741	BB	0.0537	425.70554	131.66844	0.48725
56	26.008	BV	0.0614	30.10460	7.41363	0.03446
57	26.190	VB	0.0697	445.53894	93.35061	0.50995
58	26.493	BV	0.0511	254.81003	80.20652	0.29165
59	26.636	VB	0.0607	104.48416	25.02238	0.11959
60	28.178	BB	0.0596	156.05261	39.94630	0.17861

Peak #	RetTime [min]	Type	Width [min]	Area [pA*s]	Height [pA]	Area %
61	29.403	BB	0.0550	148.92845	42.39317	0.17046
62	30.267	BB	0.0523	209.48572	63.81396	0.23977

Totals :                                   8.73689e4  1.35774e4

=====  
\*\*\* End of Report \*\*\*