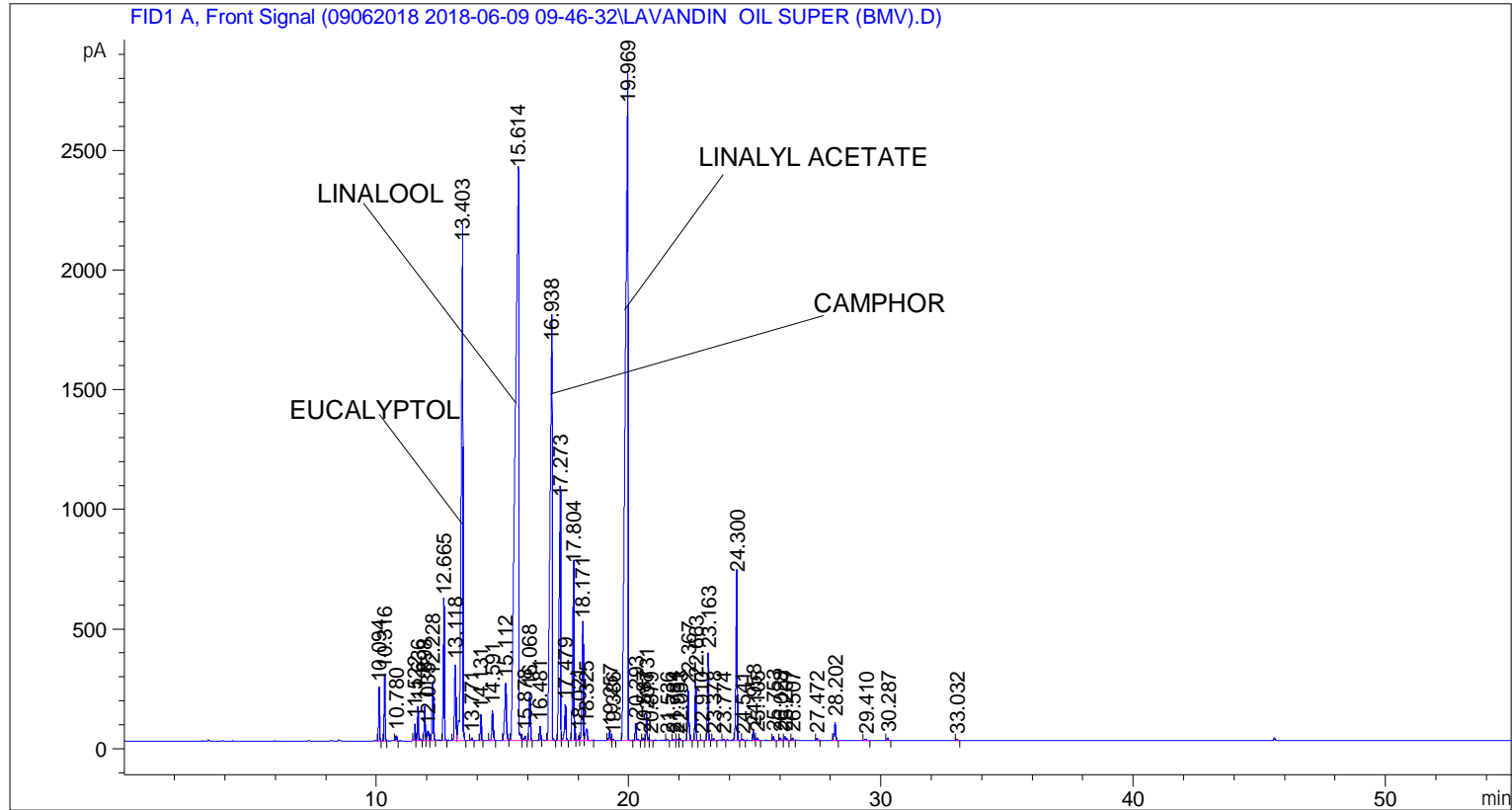


```

=====
Acq. Operator   : SYSTEM                               Seq. Line :    1
Acq. Instrument : BMV_NEW_GC_7820                     Location  : Vial 101
Injection Date  : 6/9/2018 9:59:08 AM                 Inj       :    1
                                                    Inj Volume: 0.5 µl

Acq. Method     : C:\CHEM32\2\DATA\09062018 2018-06-09 09-46-32\UNIVERSAL F.M
Last changed    : 6/9/2018 9:46:40 AM by SYSTEM
Analysis Method : C:\CHEM32\2\DATA\09062018 2018-06-09 09-46-32\UNIVERSAL F.M (Sequence
Method)
Last changed    : 6/11/2018 1:03:07 PM by SYSTEM
                  (modified after loading)
Additional Info  : Peak(s) manually integrated
  
```



=====
 Area Percent Report
 =====

```

Sorted By       :      Signal
Multiplier      :      1.0000
Dilution        :      1.0000
Do not use Multiplier & Dilution Factor with ISTDs
  
```

Signal 1: FID1 A, Front Signal

Peak #	RetTime [min]	Type	Width [min]	Area [pA*s]	Height [pA]	Area %
1	10.094	BB	0.0430	593.05127	223.51694	0.65887
2	10.316	BB	0.0433	744.30884	277.85428	0.82692
3	10.780	BB	0.0454	61.70591	21.52224	0.06855
4	11.522	BV	0.0477	201.82010	69.88441	0.22422
5	11.636	VB	0.0487	428.18488	143.96962	0.47571
6	11.898	BV	0.0471	405.46799	142.69997	0.45047

Sample Name: LAVANDIN OIL SUPER (BMV)

Peak #	RetTime [min]	Type	Width [min]	Area [pA*s]	Height [pA]	Area %
7	12.035	VV	0.0736	184.08385	40.10308	0.20452
8	12.228	VB	0.0582	899.14386	248.60547	0.99894
9	12.665	BB	0.0492	1766.67065	585.11346	1.96275
10	13.118	BV	0.0689	1383.52380	317.41052	1.53708
11	13.403	VB	0.0780	1.02570e4	2064.59448	11.39538
12	13.771	BB	0.0517	36.80003	11.39077	0.04088
13	14.131	BB	0.0463	304.16080	109.84200	0.33792
14	14.591	BB	0.0578	480.75195	128.04263	0.53411
15	15.112	BB	0.0733	1179.34119	240.08212	1.31024
16	15.614	BV	0.1263	2.28373e4	2371.93848	25.37203
17	15.878	VB	0.0529	64.48117	18.40826	0.07164
18	16.068	BB	0.0585	728.06177	199.93509	0.80887
19	16.481	BB	0.0472	173.40588	57.39507	0.19265
20	16.938	BB	0.0827	9961.56641	1644.75073	11.06721
21	17.273	BV	0.0707	4490.50098	993.23822	4.98890
22	17.479	VB	0.0582	565.72784	149.35768	0.62852
23	17.804	BB	0.0601	2837.53271	717.53485	3.15247
24	18.021	BV	0.0475	65.54747	21.53665	0.07282
25	18.171	VV	0.0595	1811.95911	485.83508	2.01307
26	18.325	VB	0.0814	287.91525	49.85369	0.31987
27	19.257	BV	0.0611	152.54845	37.78080	0.16948
28	19.386	VB	0.0541	20.74500	6.03367	0.02305
29	19.969	BB	0.1072	2.03219e4	2656.65991	22.57739
30	20.293	BB	0.0491	227.76756	71.63082	0.25305
31	20.587	BV	0.0441	30.18257	10.95885	0.03353
32	20.731	VV	0.0494	331.13284	109.17822	0.36789
33	20.879	VB	0.0459	11.49417	3.95234	0.01277
34	21.536	BB	0.0533	19.67694	5.84353	0.02186
35	21.784	BV	0.0551	28.13831	7.99264	0.03126
36	21.931	VV	0.0539	23.27337	6.81160	0.02586
37	22.053	VB	0.0525	25.72240	7.80383	0.02858
38	22.367	BB	0.0595	832.76825	213.46046	0.92520
39	22.663	BB	0.0494	733.23920	241.80418	0.81462
40	22.910	BB	0.0458	12.28142	4.23660	0.01364
41	23.163	BB	0.0509	1144.23376	361.80798	1.27123
42	23.378	BB	0.0542	20.60450	6.28647	0.02289
43	23.774	BB	0.0417	10.00066	3.92470	0.01111
44	24.300	BB	0.0593	2528.97705	681.19983	2.80967
45	24.541	BB	0.0572	22.76632	5.87683	0.02529
46	24.958	BV	0.0503	112.18139	36.08639	0.12463
47	25.105	VB	0.0658	39.27783	9.20290	0.04364
48	25.753	BB	0.0533	50.07679	15.65746	0.05563
49	26.028	BB	0.0511	35.30679	11.09209	0.03923
50	26.207	BB	0.0702	71.47597	14.84382	0.07941
51	26.507	BB	0.0493	30.34321	10.01963	0.03371
52	27.472	BB	0.0533	31.19706	9.26399	0.03466
53	28.202	BB	0.0600	303.92892	77.14347	0.33766
54	29.410	BB	0.0831	33.90077	6.47150	0.03766
55	30.287	BB	0.0553	36.53434	10.85876	0.04059
56	33.032	BB	0.0551	18.16032	5.15706	0.02018

Totals : 9.00098e4 1.59835e4

=====

*** End of Report ***