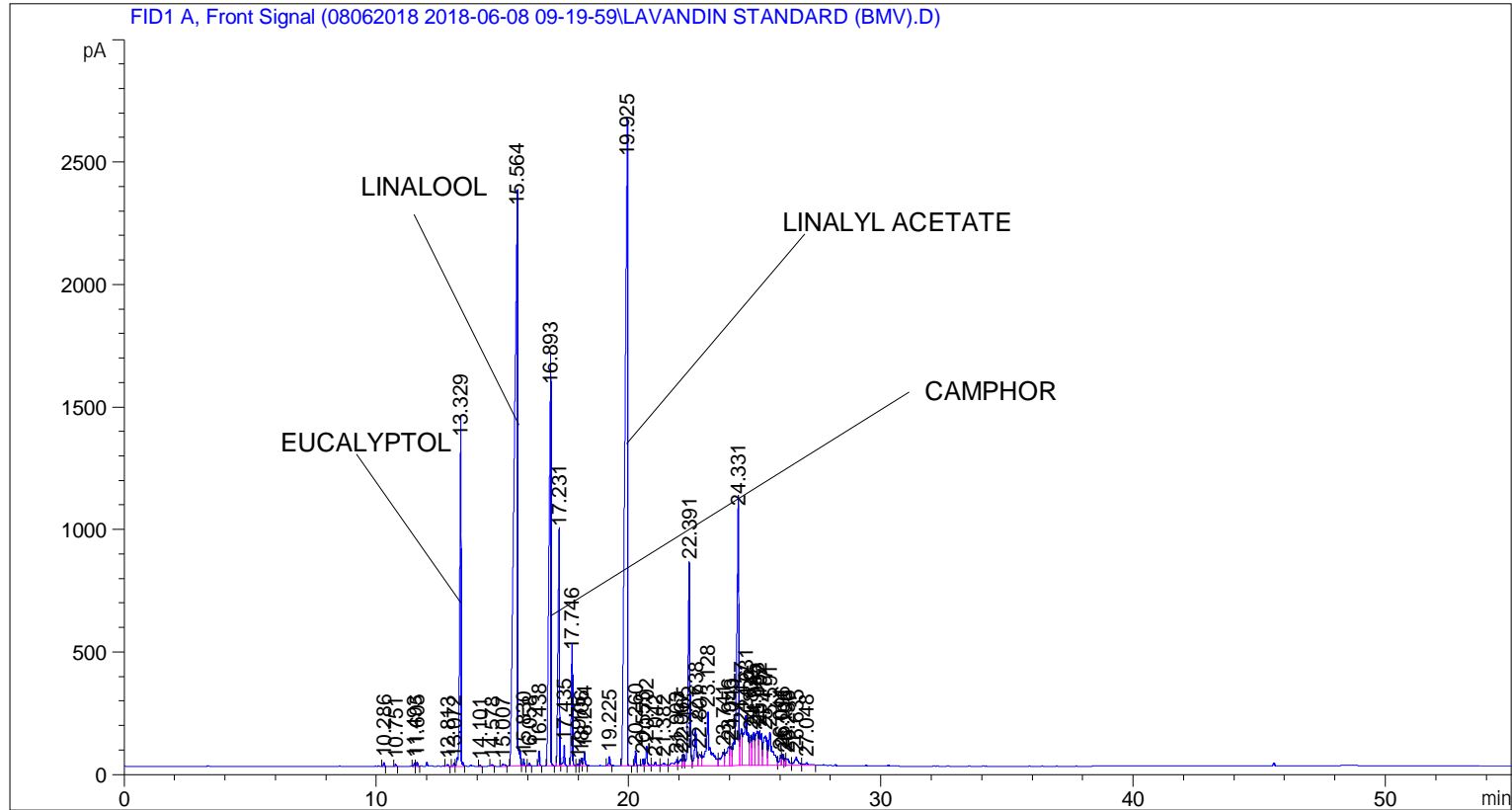


```
=====
Acq. Operator   : SYSTEM                               Seq. Line :    6
Acq. Instrument : BMV_NEW_GC_7820                     Location  : Vial 106
Injection Date  : 6/8/2018 3:08:49 PM                 Inj       :    1
                                                    Inj Volume: 0.5 µl

Acq. Method     : C:\CHEM32\2\DATA\08062018 2018-06-08 09-19-59\UNIVERSAL F.M
Last changed    : 6/8/2018 9:20:05 AM by SYSTEM
Analysis Method : C:\CHEM32\2\DATA\08062018 2018-06-08 09-19-59\UNIVERSAL F.M (Sequence
Method)
Last changed    : 6/11/2018 5:25:28 PM by SYSTEM
                  (modified after loading)
Additional Info  : Peak(s) manually integrated
=====
```



=====  
 Area Percent Report  
 =====

```
Sorted By      :      Signal
Multiplier     :      1.0000
Dilution       :      1.0000
Do not use Multiplier & Dilution Factor with ISTDs
```

Signal 1: FID1 A, Front Signal

Peak #	RetTime [min]	Type	Width [min]	Area [pA*s]	Height [pA]	Area %
1	10.286	BB	0.0445	38.95562	13.99368	0.04409
2	10.751	BB	0.0457	23.31371	8.07046	0.02639
3	11.493	BV	0.0482	33.88836	12.27517	0.03836
4	11.605	VB	0.0483	53.60167	17.23620	0.06067
5	12.813	BB	0.0492	21.14534	7.44014	0.02393
6	13.072	BV	0.0509	39.17839	11.73909	0.04434

Peak #	RetTime [min]	Type	Width [min]	Area [pA*s]	Height [pA]	Area %
7	13.329	VB	0.0592	5346.79102	1322.77234	6.05177
8	14.101	BB	0.0453	14.29594	5.01421	0.01618
9	14.578	BB	0.0625	25.42629	6.37968	0.02878
10	15.007	BB	0.0822	54.67635	9.09305	0.06189
11	15.564	BV	0.1201	2.09916e4	2264.84497	23.75934
12	15.830	VB	0.0509	96.66929	29.01510	0.10942
13	16.058	BB	0.0600	44.37422	11.75298	0.05022
14	16.438	BB	0.0511	177.04709	58.89721	0.20039
15	16.893	BB	0.0846	9028.40137	1535.15527	10.21880
16	17.231	BV	0.0651	4016.28760	954.80554	4.54584
17	17.435	VB	0.0557	304.60757	81.23085	0.34477
18	17.746	BB	0.0572	1586.37207	449.15872	1.79554
19	17.975	BV	0.0531	26.82251	8.44491	0.03036
20	18.106	VV	0.0559	106.65958	31.15797	0.12072
21	18.234	VB	0.0589	203.65623	50.60706	0.23051
22	19.225	BB	0.0607	142.76073	37.27258	0.16158
23	19.925	BB	0.1107	1.83245e4	2464.99243	20.74065
24	20.260	BB	0.0462	174.94089	59.64592	0.19801
25	20.555	BV	0.0514	90.81272	26.89657	0.10279
26	20.702	VB	0.0576	310.40552	79.43549	0.35133
27	21.042	BB	0.0816	82.28757	14.62690	0.09314
28	21.382	BV	0.1162	102.53209	11.47597	0.11605
29	21.903	VV	0.1246	238.23749	24.68360	0.26965
30	22.067	VV	0.0950	184.41316	27.22178	0.20873
31	22.165	VV	0.0682	209.08960	46.73459	0.23666
32	22.391	VV	0.0799	4214.42432	820.74969	4.77010
33	22.638	VV	0.0817	833.40222	148.04834	0.94329
34	22.807	VV	0.0971	341.01016	46.75762	0.38597
35	23.128	VV	0.1372	2307.24609	215.04674	2.61146
36	23.741	VV	0.1291	521.97400	55.81357	0.59080
37	23.956	VV	0.1396	748.33313	75.50642	0.84700
38	24.043	VV	0.0797	456.77271	78.76377	0.51700
39	24.331	VV	0.0840	6051.10107	1038.83948	6.84894
40	24.457	VV	0.0792	804.30383	148.58708	0.91035
41	24.631	VV	0.1517	2284.16919	202.35834	2.58534
42	24.832	VV	0.0942	769.64301	121.02254	0.87112
43	24.945	VV	0.0811	752.70062	134.93651	0.85194
44	25.083	VV	0.1166	1157.79895	139.86760	1.31046
45	25.192	VV	0.1005	1071.69421	141.24313	1.21300
46	25.417	VV	0.1348	1272.23157	120.84058	1.43998
47	25.591	VV	0.1487	1437.90491	134.54198	1.62749
48	26.011	VV	0.0710	206.64648	40.86795	0.23389
49	26.096	VV	0.0655	210.13351	45.85529	0.23784
50	26.196	VV	0.0609	125.25621	29.88684	0.14177
51	26.296	VV	0.1125	219.76080	27.71909	0.24874
52	26.635	VV	0.1340	347.06729	33.17971	0.39283
53	27.048	VB	0.1424	123.53963	11.05394	0.13983

Totals : 8.83509e4 1.34936e4

\*\*\* End of Report \*\*\*