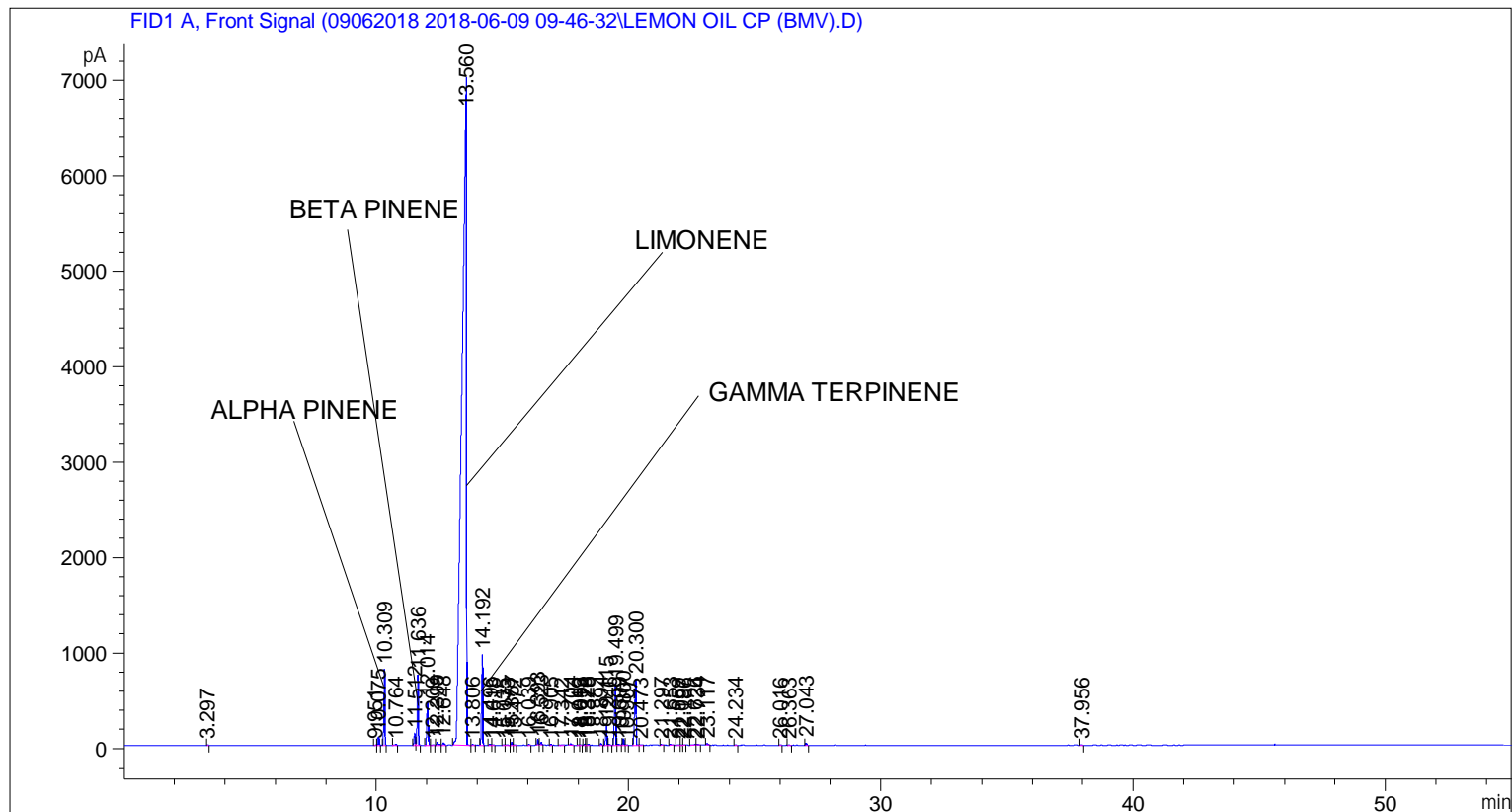


```

=====
Acq. Operator   : SYSTEM                               Seq. Line :    4
Acq. Instrument : BMV_NEW_GC_7820                     Location  : Vial 104
Injection Date  : 6/9/2018 1:19:16 PM                 Inj       :    1
                                                    Inj Volume: 0.5 µl

Method          : C:\CHEM32\2\DATA\09062018 2018-06-09 09-46-32\UNIVERSAL F.M (Sequence
                  Method)
Last changed    : 6/9/2018 9:46:40 AM by SYSTEM
Additional Info : Peak(s) manually integrated
  
```



Area Percent Report

```

Sorted By      : Signal
Multiplier     : 1.0000
Dilution      : 1.0000
Do not use Multiplier & Dilution Factor with ISTDs
  
```

Signal 1: FID1 A, Front Signal

Peak #	RetTime [min]	Type	Width [min]	Area [pA*s]	Height [pA]	Area %
1	3.297	BB	0.0331	11.39122	4.72732	0.01072
2	9.951	BV	0.0431	4.85005	1.81932	0.00457
3	10.075	VB	0.0437	255.41504	91.19551	0.24041
4	10.309	BB	0.0443	2286.49072	800.91071	2.15217
5	10.764	BB	0.0530	37.88423	10.52161	0.03566
6	11.512	BV	0.0526	415.60153	125.46701	0.39119
7	11.636	VB	0.0492	2286.46802	736.77014	2.15215
8	12.014	BB	0.0580	1675.34497	454.12897	1.57692
9	12.209	BB	0.0575	14.23318	3.64896	0.01340

Sample Name: LEMON OIL CP (BMV)

Peak #	RetTime [min]	Type	Width [min]	Area [pA*s]	Height [pA]	Area %
10	12.399	BB	0.0707	134.10959	27.60553	0.12623
11	12.648	BB	0.0716	109.44888	23.80960	0.10302
12	13.560	BV	0.1525	8.83943e4	6990.09277	83.20148
13	13.806	VB	0.0413	22.89556	8.52752	0.02155
14	14.192	BB	0.0463	2941.56543	945.39655	2.76876
15	14.496	BV	0.0478	44.06247	13.58717	0.04147
16	14.618	VB	0.0463	11.93184	3.94315	0.01123
17	15.035	BB	0.0476	16.84299	5.22583	0.01585
18	15.173	BB	0.0750	14.07136	2.88066	0.01324
19	15.357	BV	0.0463	101.70547	33.60749	0.09573
20	15.472	VB	0.0491	11.91502	3.65063	0.01122
21	16.039	BB	0.0452	24.37737	8.55521	0.02295
22	16.393	BV	0.0436	168.74649	60.37664	0.15883
23	16.523	VB	0.0505	100.48470	29.64954	0.09458
24	16.905	BB	0.0438	23.88614	8.50866	0.02248
25	17.342	BB	0.0737	15.04663	2.75551	0.01416
26	17.704	BB	0.0663	66.58194	14.04475	0.06267
27	18.019	BV	0.0485	15.98359	5.10328	0.01504
28	18.093	VB	0.0457	21.16192	7.12054	0.01992
29	18.228	BV	0.0482	25.43114	7.76720	0.02394
30	18.326	VV	0.0457	22.48557	7.14088	0.02116
31	18.378	VB	0.0489	30.93622	9.52357	0.02912
32	18.894	BB	0.0504	56.57645	17.67032	0.05325
33	19.115	BV	0.0582	796.71271	220.44179	0.74991
34	19.246	VB	0.0508	34.29551	10.04980	0.03228
35	19.499	BV	0.0551	2536.04663	655.53308	2.38706
36	19.609	VB	0.0561	45.37086	12.57998	0.04271
37	19.800	BV	0.0500	226.84943	71.49545	0.21352
38	19.907	VB	0.0506	11.83591	3.48306	0.01114
39	20.300	BB	0.0577	2835.82446	694.18292	2.66923
40	20.473	BB	0.0756	23.39003	4.42778	0.02202
41	21.297	BB	0.0491	31.86067	9.76652	0.02999
42	21.653	BB	0.0665	43.96641	9.40522	0.04138
43	21.959	BV	0.0776	22.53809	3.94812	0.02121
44	22.097	VV	0.0528	9.78565	2.66500	0.00921
45	22.186	VB	0.0509	6.84895	2.10804	0.00645
46	22.626	BV	0.0845	41.29909	6.37998	0.03887
47	22.734	VB	0.0507	31.52696	9.50322	0.02967
48	23.117	BB	0.0564	69.97787	18.40165	0.06587
49	24.234	BB	0.0521	23.81523	7.29933	0.02242
50	26.016	BB	0.0475	6.50835	2.07928	0.00613
51	26.363	BB	0.0500	8.21643	2.74086	0.00773
52	27.043	BB	0.0497	65.01388	20.66726	0.06119
53	37.956	BB	0.0521	7.34938	2.19234	0.00692

Totals : 1.06241e5 1.22351e4

*** End of Report ***