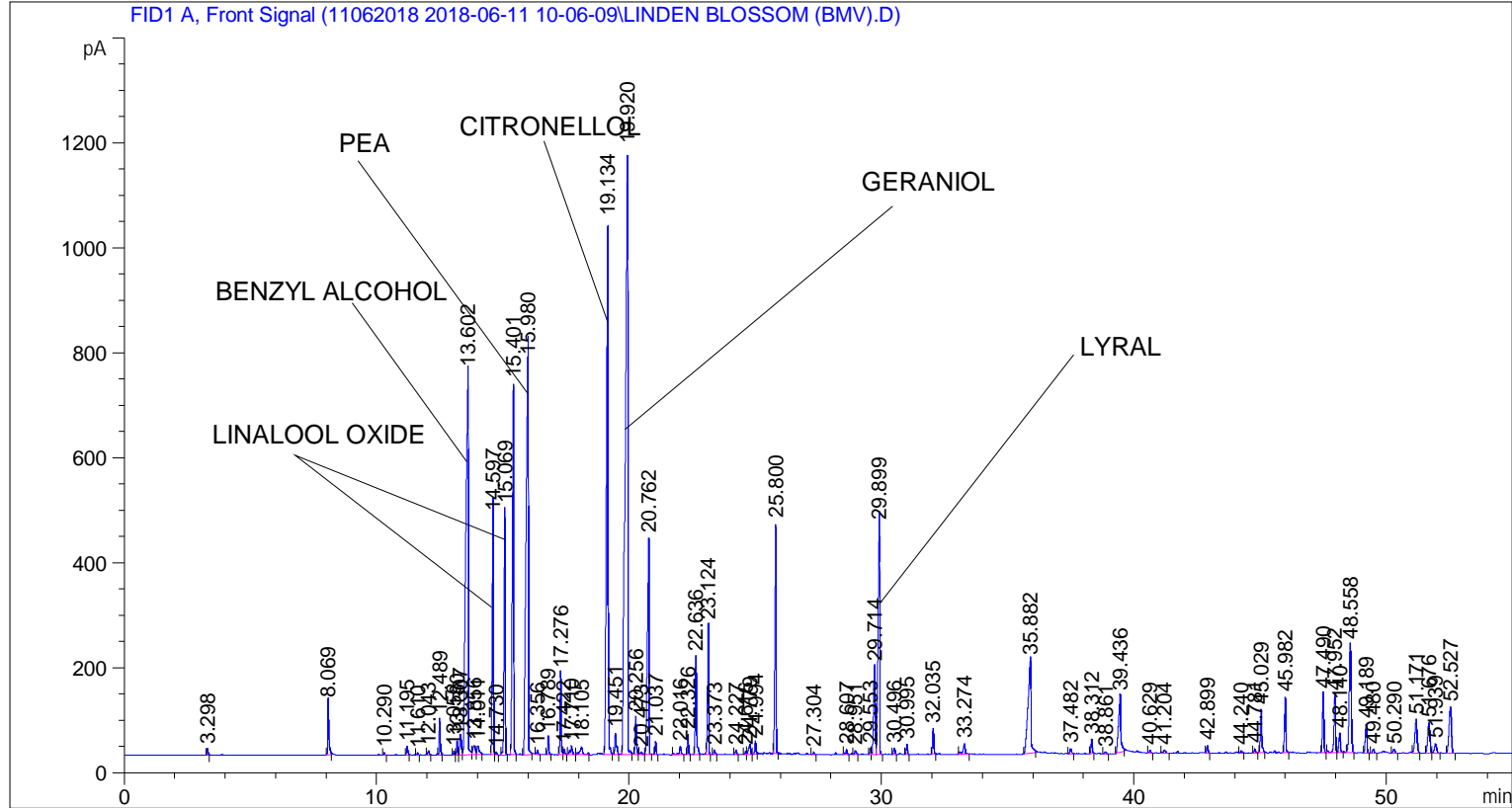


```

=====
Acq. Operator   : SYSTEM                               Seq. Line :    3
Acq. Instrument : BMV_NEW_GC_7820                     Location  : Vial 103
Injection Date  : 6/11/2018 12:33:04 PM                Inj       :    1
                                                    Inj Volume: 0.5 µl

Acq. Method    : C:\CHEM32\2\DATA\11062018 2018-06-11 10-06-09\UNIVERSAL F.M
Last changed   : 6/11/2018 10:06:16 AM by SYSTEM
Analysis Method: C:\CHEM32\2\DATA\11062018 2018-06-11 10-06-09\UNIVERSAL F.M (Sequence
Method)
Last changed   : 6/11/2018 2:10:01 PM by SYSTEM
                (modified after loading)
  
```



Area Percent Report

```

Sorted By      : Signal
Multiplier    : 1.0000
Dilution      : 1.0000
Do not use Multiplier & Dilution Factor with ISTDs
  
```

Signal 1: FID1 A, Front Signal

| Peak # | RetTime [min] | Type | Width [min] | Area [pA*s] | Height [pA] | Area % |
|--------|---------------|------|-------------|-------------|-------------|---------|
| 1 | 3.298 | BB | 0.0454 | 30.92287 | 10.80102 | 0.06580 |
| 2 | 8.069 | BB | 0.0530 | 346.09982 | 98.55171 | 0.73644 |
| 3 | 10.290 | BB | 0.0469 | 14.11650 | 4.71276 | 0.03004 |
| 4 | 11.195 | BB | 0.0558 | 61.55821 | 16.39426 | 0.13098 |
| 5 | 11.610 | BB | 0.0445 | 11.61536 | 4.16928 | 0.02472 |
| 6 | 12.043 | BB | 0.0620 | 34.63045 | 8.07598 | 0.07369 |
| 7 | 12.489 | BB | 0.0474 | 212.30734 | 70.01910 | 0.45175 |

Sample Name: LINDEN BLOSSOM (BMV)

| Peak # | RetTime [min] | Type | Width [min] | Area [pA*s] | Height [pA] | Area % |
|--------|---------------|------|-------------|-------------|-------------|----------|
| 8 | 13.058 | BV | 0.0441 | 21.32009 | 7.76020 | 0.04537 |
| 9 | 13.180 | VV | 0.0446 | 74.82976 | 26.77147 | 0.15922 |
| 10 | 13.307 | VV | 0.0846 | 194.66518 | 37.45414 | 0.41421 |
| 11 | 13.602 | VV | 0.1068 | 5176.68457 | 729.07898 | 11.01502 |
| 12 | 13.856 | VV | 0.1088 | 120.08640 | 17.34446 | 0.25552 |
| 13 | 14.011 | VB | 0.0945 | 106.47939 | 16.67831 | 0.22657 |
| 14 | 14.597 | BV | 0.0582 | 1638.54358 | 452.86392 | 3.48651 |
| 15 | 14.730 | VB | 0.0461 | 16.52217 | 5.64569 | 0.03516 |
| 16 | 15.069 | BB | 0.0553 | 1584.05237 | 469.69363 | 3.37057 |
| 17 | 15.401 | BB | 0.0613 | 2746.63062 | 707.39667 | 5.84432 |
| 18 | 15.980 | BB | 0.0926 | 4942.71973 | 752.66571 | 10.51718 |
| 19 | 16.356 | BB | 0.0529 | 29.55099 | 8.43704 | 0.06288 |
| 20 | 16.789 | BB | 0.0514 | 104.84985 | 34.53172 | 0.22310 |
| 21 | 17.276 | BV | 0.0465 | 458.62860 | 154.94714 | 0.97588 |
| 22 | 17.422 | VB | 0.0527 | 38.01287 | 10.89465 | 0.08088 |
| 23 | 17.710 | BV | 0.0826 | 97.63194 | 16.14130 | 0.20774 |
| 24 | 18.105 | VB | 0.1167 | 118.73750 | 14.32888 | 0.25265 |
| 25 | 19.134 | BB | 0.0724 | 4555.89160 | 1015.15509 | 9.69408 |
| 26 | 19.451 | BB | 0.0597 | 163.97816 | 40.12898 | 0.34891 |
| 27 | 19.920 | BB | 0.0964 | 7942.86621 | 1153.24658 | 16.90093 |
| 28 | 20.256 | BB | 0.0522 | 243.60518 | 70.74677 | 0.51835 |
| 29 | 20.473 | BV | 0.0622 | 22.37251 | 5.19829 | 0.04760 |
| 30 | 20.762 | VB | 0.0696 | 1894.67896 | 412.38358 | 4.03152 |
| 31 | 21.037 | BB | 0.0499 | 69.92525 | 24.06115 | 0.14879 |
| 32 | 22.016 | BB | 0.0809 | 86.66492 | 15.58253 | 0.18441 |
| 33 | 22.326 | BB | 0.0482 | 117.23222 | 37.82110 | 0.24945 |
| 34 | 22.636 | BB | 0.0534 | 657.38898 | 185.10121 | 1.39880 |
| 35 | 23.124 | BB | 0.0481 | 757.85699 | 245.11702 | 1.61258 |
| 36 | 23.373 | BB | 0.0639 | 35.02929 | 8.52621 | 0.07454 |
| 37 | 24.227 | BB | 0.0544 | 27.06957 | 8.23095 | 0.05760 |
| 38 | 24.616 | BV | 0.0574 | 23.34872 | 6.58723 | 0.04968 |
| 39 | 24.779 | VV | 0.0904 | 102.70095 | 19.21445 | 0.21853 |
| 40 | 24.994 | VB | 0.0491 | 78.00154 | 24.50919 | 0.16597 |
| 41 | 25.800 | BB | 0.0560 | 1505.88049 | 439.17743 | 3.20423 |
| 42 | 27.304 | BB | 0.0571 | 16.41720 | 4.66304 | 0.03493 |
| 43 | 28.607 | BB | 0.0625 | 40.96571 | 9.46008 | 0.08717 |
| 44 | 28.951 | BB | 0.0664 | 33.70371 | 7.80188 | 0.07172 |
| 45 | 29.553 | BV | 0.0534 | 40.61673 | 11.45005 | 0.08642 |
| 46 | 29.714 | VV | 0.0744 | 782.68445 | 167.78107 | 1.66541 |
| 47 | 29.899 | VB | 0.0729 | 1974.30591 | 435.74084 | 4.20095 |
| 48 | 30.496 | BB | 0.0607 | 47.26962 | 12.32938 | 0.10058 |
| 49 | 30.995 | BB | 0.0513 | 63.73128 | 18.90544 | 0.13561 |
| 50 | 32.035 | BB | 0.0521 | 166.87505 | 48.52165 | 0.35508 |
| 51 | 33.274 | BB | 0.0945 | 126.76466 | 19.85855 | 0.26973 |
| 52 | 35.882 | BB | 0.1178 | 1483.28040 | 176.93932 | 3.15614 |
| 53 | 37.482 | BB | 0.0665 | 40.23876 | 9.29467 | 0.08562 |
| 54 | 38.312 | BB | 0.0528 | 96.09810 | 27.50681 | 0.20448 |
| 55 | 38.861 | BB | 0.0683 | 14.86080 | 3.58853 | 0.03162 |
| 56 | 39.436 | BB | 0.0928 | 700.68121 | 106.45721 | 1.49092 |
| 57 | 40.629 | BB | 0.0594 | 19.90756 | 5.34616 | 0.04236 |
| 58 | 41.204 | BB | 0.1124 | 39.44804 | 5.45131 | 0.08394 |
| 59 | 42.899 | BB | 0.0558 | 54.92647 | 14.62679 | 0.11687 |
| 60 | 44.240 | BB | 0.0705 | 23.03850 | 4.93371 | 0.04902 |
| 61 | 44.781 | BB | 0.0585 | 26.36688 | 7.23618 | 0.05610 |

| Peak # | RetTime [min] | Type | Width [min] | Area [pA*s] | Height [pA] | Area % |
|--------|---------------|------|-------------|-------------|-------------|---------|
| 62 | 45.029 | BB | 0.0637 | 337.96503 | 82.57838 | 0.71913 |
| 63 | 45.982 | BB | 0.0575 | 371.80939 | 104.47363 | 0.79114 |
| 64 | 47.490 | BB | 0.0620 | 444.24548 | 112.57872 | 0.94527 |
| 65 | 47.952 | BV | 0.0722 | 487.45300 | 108.92101 | 1.03721 |
| 66 | 48.140 | VB | 0.0719 | 165.23035 | 37.13814 | 0.35158 |
| 67 | 48.558 | BB | 0.0866 | 1176.96594 | 206.27176 | 2.50436 |
| 68 | 49.189 | BB | 0.0729 | 247.91669 | 54.63274 | 0.52752 |
| 69 | 49.480 | BB | 0.0740 | 34.34326 | 7.42025 | 0.07308 |
| 70 | 50.290 | BB | 0.0831 | 35.29890 | 6.97166 | 0.07511 |
| 71 | 51.171 | BB | 0.0960 | 392.10153 | 63.52644 | 0.83432 |
| 72 | 51.676 | BV | 0.0956 | 350.17853 | 57.06458 | 0.74511 |
| 73 | 51.939 | VB | 0.0990 | 109.47585 | 17.99760 | 0.23294 |
| 74 | 52.527 | BB | 0.1060 | 585.76581 | 87.58116 | 1.24640 |

Totals : 4.69966e4 9431.19448

=====
*** End of Report ***