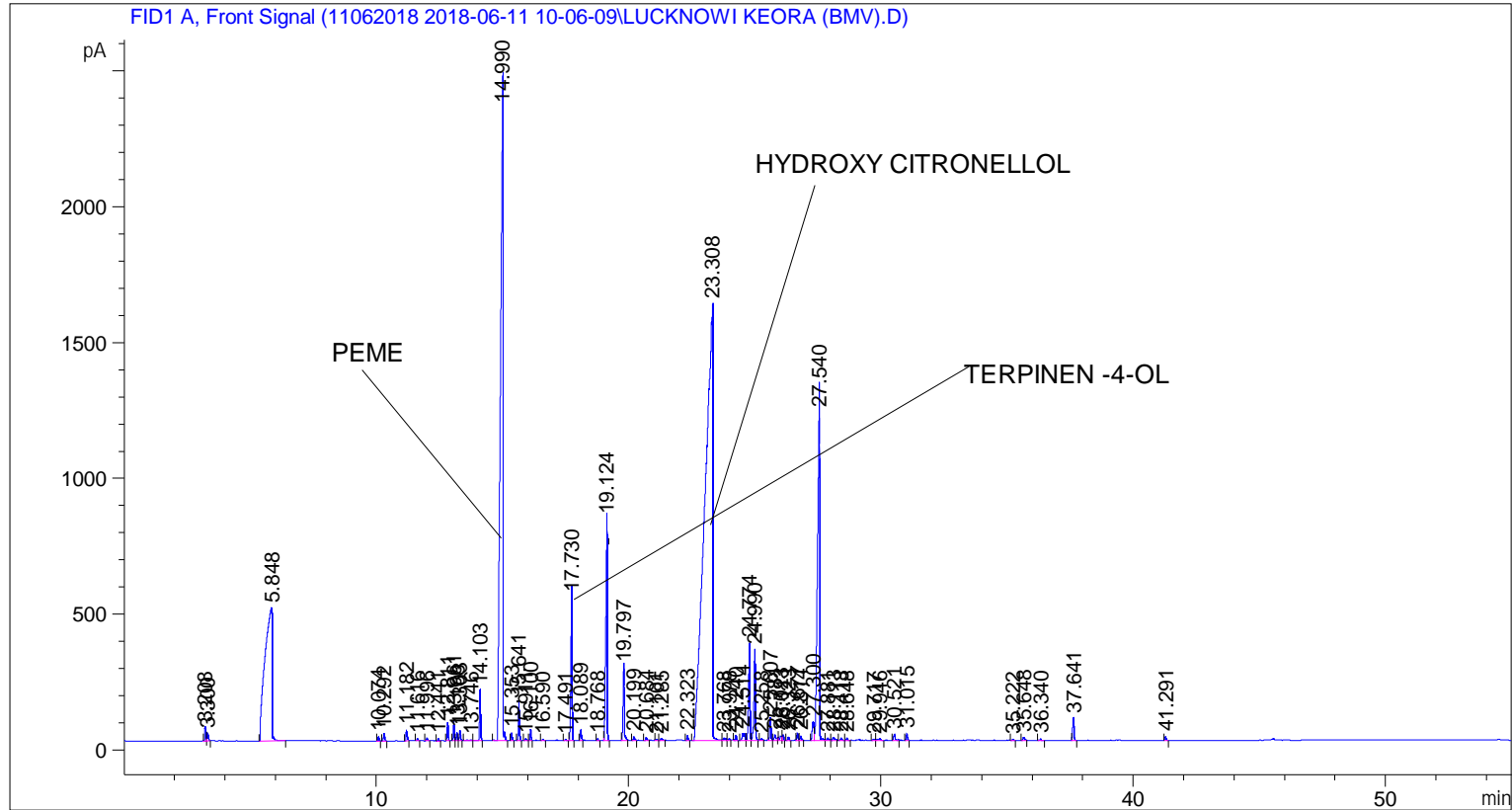


```
=====
Acq. Operator   : SYSTEM                               Seq. Line :    4
Acq. Instrument : BMV_NEW_GC_7820                     Location  : Vial 104
Injection Date  : 6/11/2018 1:40:42 PM                 Inj       :    1
                                                    Inj Volume: 0.5 µl

Acq. Method    : C:\CHEM32\2\DATA\11062018 2018-06-11 10-06-09\UNIVERSAL F.M
Last changed   : 6/11/2018 10:06:16 AM by SYSTEM
Analysis Method : C:\CHEM32\2\DATA\11062018 2018-06-11 10-06-09\UNIVERSAL F.M (Sequence
Method)
Last changed   : 6/11/2018 5:10:04 PM by SYSTEM
                (modified after loading)
Additional Info : Peak(s) manually integrated
=====
```



=====
 Area Percent Report
 =====

```
Sorted By      :      Signal
Multiplier     :      1.0000
Dilution       :      1.0000
Do not use Multiplier & Dilution Factor with ISTDs
```

Signal 1: FID1 A, Front Signal

Peak #	RetTime [min]	Type	Width [min]	Area [pA*s]	Height [pA]	Area %
1	3.208	BV	0.0537	173.65393	48.55608	0.20542
2	3.300	VB	0.0650	109.49361	26.05929	0.12952
3	5.848	BB	0.2664	9800.01953	487.75073	11.59246
4	10.074	BB	0.0464	45.20257	15.33254	0.05347
5	10.292	BB	0.0520	83.42888	27.01455	0.09869
6	11.182	BB	0.0507	132.33186	39.87509	0.15654

Sample Name: LUCKNOWI KEORA (BMV)

Peak #	RetTime [min]	Type	Width [min]	Area [pA*s]	Height [pA]	Area %
7	11.616	BB	0.0487	20.57508	7.34576	0.02434
8	11.996	BB	0.0604	38.28107	10.06295	0.04528
9	12.441	BB	0.0557	25.85620	7.60211	0.03059
10	12.811	BB	0.0504	193.92091	65.73796	0.22939
11	13.061	BV	0.0463	209.45517	71.17469	0.24776
12	13.188	VV	0.0554	102.48795	30.34057	0.12123
13	13.303	VB	0.0494	118.77406	37.06575	0.14050
14	13.746	BV	0.1135	36.41850	4.35745	0.04308
15	14.103	VB	0.0474	561.27722	185.20412	0.66394
16	14.990	BB	0.0972	1.73019e4	2369.56348	20.46640
17	15.353	BB	0.0465	83.66359	28.28832	0.09897
18	15.641	BB	0.0502	426.09186	145.20715	0.50402
19	15.911	BB	0.0624	30.55314	7.67466	0.03614
20	16.100	BB	0.0460	120.56766	41.41452	0.14262
21	16.590	BB	0.0597	22.64225	6.04273	0.02678
22	17.491	BB	0.0598	20.38845	5.43379	0.02412
23	17.730	BB	0.0595	1968.86731	527.50354	2.32898
24	18.089	BB	0.0494	121.35931	37.90623	0.14356
25	18.768	BB	0.0477	21.37307	6.99199	0.02528
26	19.124	BB	0.0607	3394.61060	813.20532	4.01549
27	19.797	BB	0.0589	988.43896	268.57785	1.16923
28	20.199	BB	0.0646	56.23345	13.49051	0.06652
29	20.684	BB	0.0622	45.40297	11.46072	0.05371
30	21.101	BB	0.0538	18.27854	5.10204	0.02162
31	21.285	BB	0.0753	42.52781	8.36088	0.05031
32	22.323	BB	0.0558	58.52388	17.13383	0.06923
33	23.308	BV	0.2818	3.54911e4	1606.06714	41.98252
34	23.768	VV	0.1002	73.57491	9.73701	0.08703
35	23.978	VB	0.0722	35.39006	6.85296	0.04186
36	24.240	BB	0.0577	74.86947	20.92180	0.08856
37	24.514	BV	0.0921	191.05426	27.82865	0.22600
38	24.774	VV	0.0586	1312.73169	359.23129	1.55283
39	24.990	VB	0.0623	1324.12903	333.45322	1.56631
40	25.258	BB	0.0777	39.07076	7.38781	0.04622
41	25.607	BV	0.0532	296.16827	83.82487	0.35034
42	25.781	VB	0.0764	109.99181	19.91691	0.13011
43	26.023	BV	0.0869	104.71284	18.27319	0.12386
44	26.111	VB	0.0562	77.58178	20.46723	0.09177
45	26.323	BB	0.0588	49.63771	13.54366	0.05872
46	26.677	BV	0.0576	92.92545	26.04837	0.10992
47	26.814	VB	0.0578	58.90411	16.44575	0.06968
48	27.300	BV	0.0795	354.89236	69.59555	0.41980
49	27.540	VB	0.0886	7514.35059	1206.83142	8.88874
50	27.881	BB	0.0835	51.55515	8.90481	0.06098
51	28.113	BB	0.1041	75.29562	10.44578	0.08907
52	28.413	BB	0.0640	35.17297	8.55131	0.04161
53	28.648	BB	0.0605	33.72102	8.83336	0.03989
54	29.717	BV	0.0801	25.77374	5.00495	0.03049
55	29.946	VB	0.1044	59.66262	7.87196	0.07058
56	30.521	BB	0.0710	102.80787	21.81252	0.12161
57	31.015	BB	0.0613	94.49757	24.31796	0.11178
58	35.222	BB	0.0586	18.16402	4.97255	0.02149
59	35.648	BB	0.0709	57.74585	12.27684	0.06831
60	36.340	BB	0.0713	37.39844	7.88918	0.04424

Sample Name: LUCKNOWI KEORA (BMV)

Peak #	RetTime [min]	Type	Width [min]	Area [pA*s]	Height [pA]	Area %
61	37.641	BB	0.0609	316.60962	82.34794	0.37452
62	41.291	BB	0.0614	55.79603	14.32570	0.06600

Totals : 8.45379e4 9440.81888

=====
*** End of Report ***