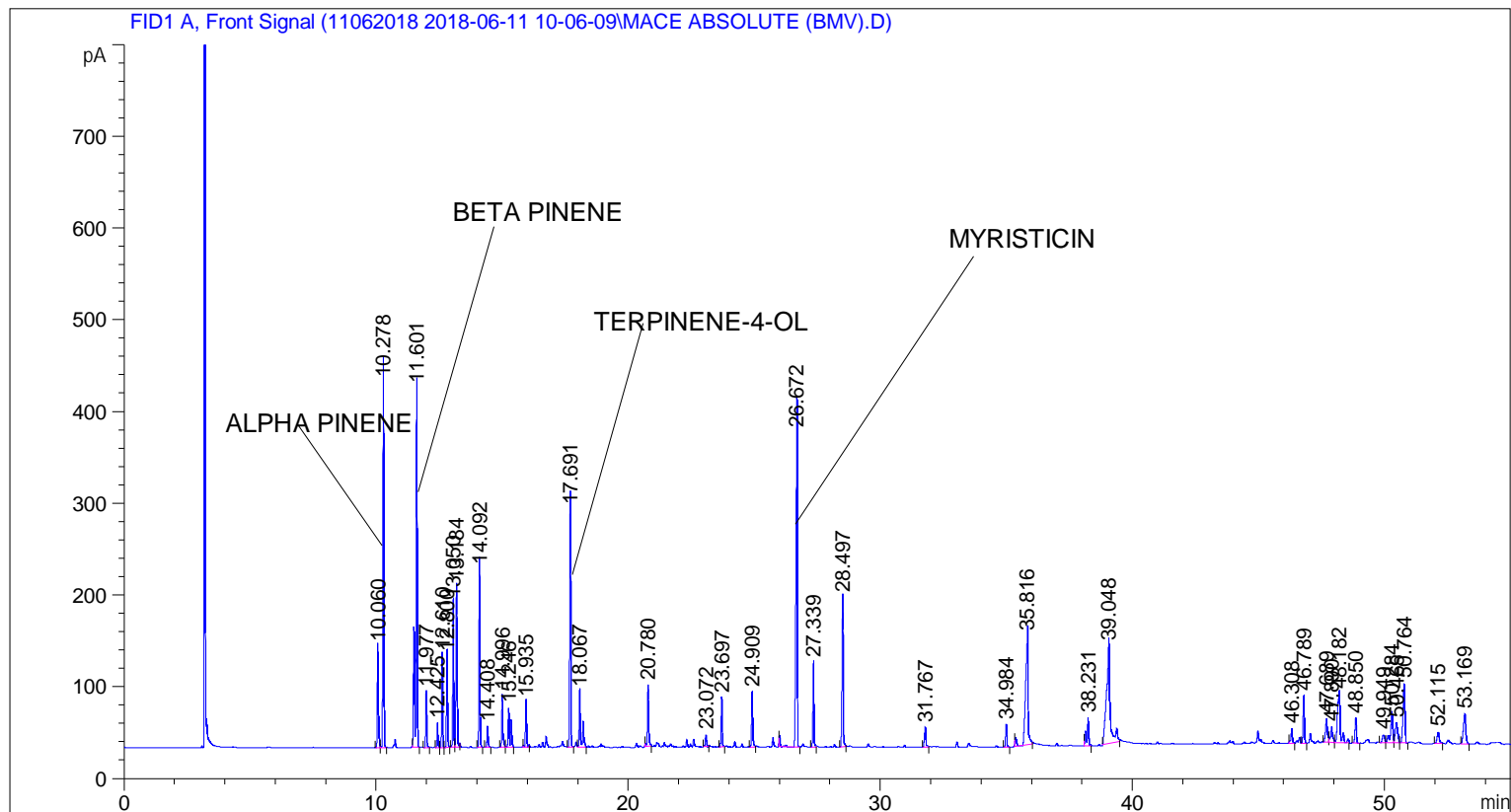


```

=====
Acq. Operator   : SYSTEM                               Seq. Line :    5
Acq. Instrument : BMV_NEW_GC_7820                     Location  : Vial 105
Injection Date  : 6/11/2018 2:47:45 PM                 Inj       :    1
                                                    Inj Volume: 0.5 µl

Acq. Method    : C:\CHEM32\2\DATA\11062018 2018-06-11 10-06-09\UNIVERSAL F.M
Last changed   : 6/11/2018 10:06:16 AM by SYSTEM
Analysis Method: C:\CHEM32\2\DATA\11062018 2018-06-11 10-06-09\UNIVERSAL F.M (Sequence
Method)
Last changed   : 6/19/2018 10:42:21 AM by SYSTEM
                (modified after loading)

Additional Info : Peak(s) manually integrated
  
```



=====
 Area Percent Report
 =====

```

Sorted By      :      Signal
Multiplier     :      1.0000
Dilution      :      1.0000
Do not use Multiplier & Dilution Factor with ISTDs
  
```

Signal 1: FID1 A, Front Signal

Peak #	RetTime [min]	Type	Width [min]	Area [pA*s]	Height [pA]	Area %
1	10.060	BV	0.0570	349.67453	110.32061	2.40463
2	10.278	VB	0.0498	1153.74585	397.66617	7.93404
3	11.601	BB	0.0611	1508.77808	390.56247	10.37551
4	11.977	BB	0.0531	170.80170	60.15808	1.17456
5	12.425	BV	0.0504	75.28297	25.54921	0.51770
6	12.610	VV	0.0532	288.07434	101.19653	1.98102

Sample Name: MACE ABSOLUTE (BMV)

Peak #	RetTime [min]	Type	Width [min]	Area [pA*s]	Height [pA]	Area %
7	12.800	VB	0.0517	301.72842	98.64656	2.07492
8	13.050	BV	0.0537	452.77563	156.56204	3.11363
9	13.184	VB	0.0572	620.85565	175.74370	4.26948
10	14.092	BB	0.0506	575.36792	193.89616	3.95667
11	14.408	BB	0.0554	67.56809	22.26464	0.46465
12	14.996	BB	0.0583	186.43939	56.79986	1.28210
13	15.246	BB	0.0817	222.04051	41.99107	1.52692
14	15.935	BB	0.0574	156.71188	48.95019	1.07767
15	17.691	BB	0.0580	841.94470	258.35718	5.78986
16	18.067	BB	0.0736	297.63333	60.31961	2.04675
17	20.780	BB	0.0604	227.38077	65.70216	1.56364
18	23.072	BB	0.0631	45.16702	12.24029	0.31060
19	23.697	BB	0.0553	160.80913	53.14355	1.10585
20	24.909	BB	0.0589	196.73328	58.99024	1.35289
21	26.672	BB	0.0687	1425.56763	341.65005	9.80330
22	27.339	BB	0.0561	284.08884	91.92252	1.95361
23	28.497	BB	0.0588	538.25549	161.89996	3.70146
24	31.767	BB	0.0669	83.32003	20.74263	0.57297
25	34.984	BB	0.0590	79.32553	23.73617	0.54550
26	35.816	BB	0.1068	877.95044	117.93879	6.03746
27	38.231	BB	0.0805	156.78630	30.24661	1.07818
28	39.048	BB	0.1474	1122.90576	106.20193	7.72196
29	46.308	BB	0.0673	62.31040	15.37241	0.42849
30	46.789	BB	0.0606	178.69592	51.39121	1.22885
31	47.689	BV	0.0909	142.63458	24.88019	0.98086
32	47.890	VV	0.0817	95.51710	16.94873	0.65685
33	48.182	VB	0.1328	432.47379	52.10915	2.97402
34	48.850	BB	0.0711	107.71651	26.70369	0.74074
35	49.949	BV	0.1065	54.76048	8.14037	0.37658
36	50.284	VV	0.0958	209.87839	34.10268	1.44328
37	50.465	VV	0.1064	149.09645	22.17935	1.02530
38	50.764	VB	0.0867	345.17545	64.23442	2.37369
39	52.115	BB	0.0993	77.71156	12.71400	0.53440
40	53.169	BB	0.1067	218.03441	32.31415	1.49937

Totals : 1.45417e4 3644.48932

=====
*** End of Report ***