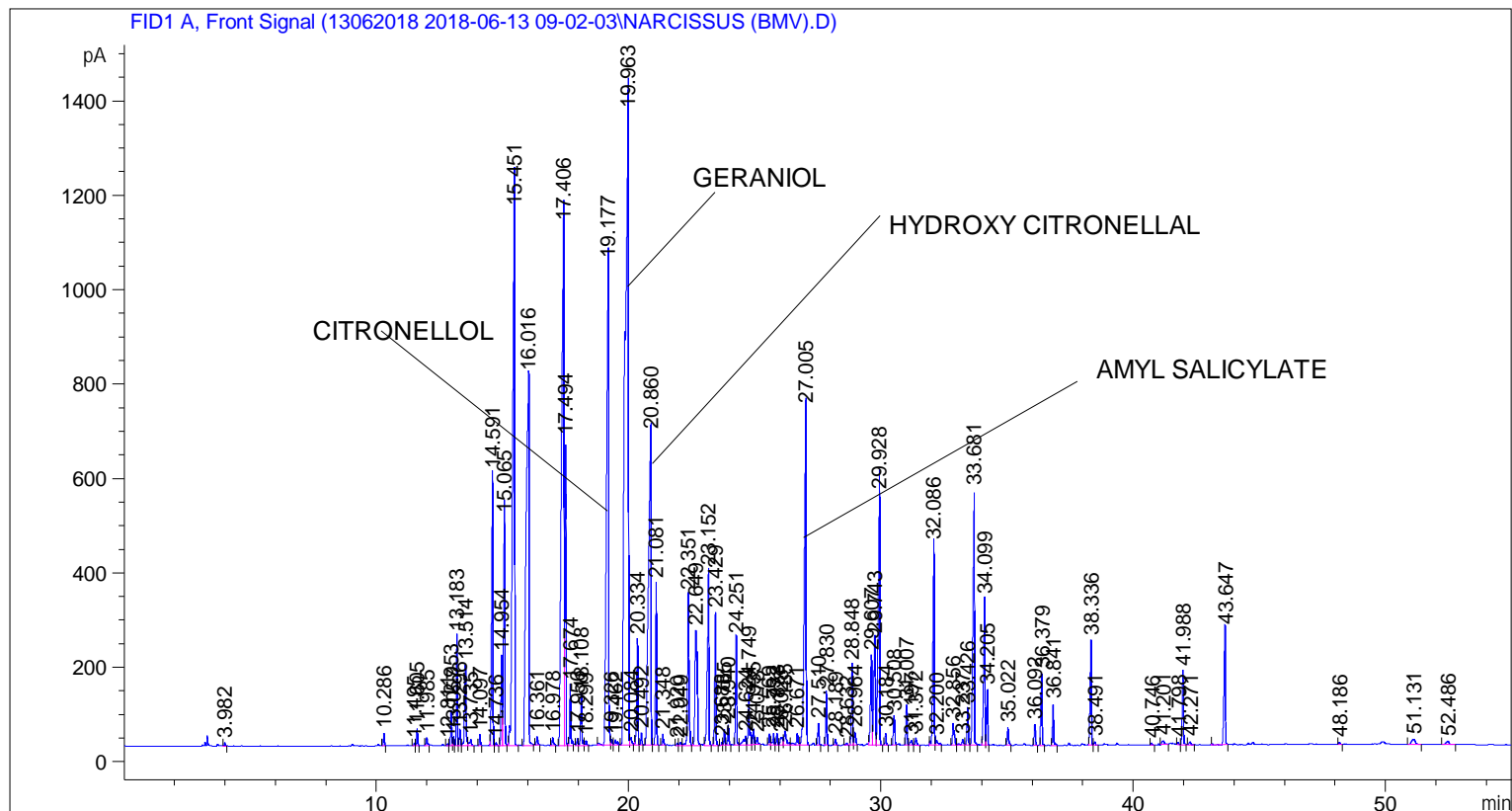


```

=====
Acq. Operator   : SYSTEM                               Seq. Line :    2
Acq. Instrument : BMV_NEW_GC_7820                     Location  : Vial 102
Injection Date  : 6/13/2018 10:22:57 AM                Inj       :    1
                                                    Inj Volume: 0.5 µl

Acq. Method     : C:\CHEM32\2\DATA\13062018 2018-06-13 09-02-03\UNIVERSAL F.M
Last changed    : 6/13/2018 9:02:09 AM by SYSTEM
Analysis Method : C:\CHEM32\2\DATA\13062018 2018-06-13 09-02-03\UNIVERSAL F.M (Sequence
Method)
Last changed    : 6/19/2018 5:25:40 PM by SYSTEM
                  (modified after loading)
  
```



=====
 Area Percent Report
 =====

```

Sorted By       : Signal
Multiplier      : 1.0000
Dilution        : 1.0000
Do not use Multiplier & Dilution Factor with ISTDs
  
```

Signal 1: FID1 A, Front Signal

Peak #	RetTime [min]	Type	Width [min]	Area [pA*s]	Height [pA]	Area %
1	3.982	BB	0.0399	15.16345	6.33832	0.01810
2	10.286	BB	0.0448	74.97208	26.64201	0.08947
3	11.495	BV	0.0486	15.88107	5.69158	0.01895
4	11.605	VB	0.0457	101.85839	35.28381	0.12156
5	11.985	BB	0.0569	67.49895	17.54788	0.08055
6	12.811	BV	0.0452	13.27999	4.67177	0.01585
7	12.953	VV	0.0461	213.30727	73.00874	0.25456

Sample Name: NARCISSUS (BMV)

Peak #	RetTime [min]	Type	Width [min]	Area [pA*s]	Height [pA]	Area %
8	13.057	VV	0.0476	59.29560	19.43309	0.07076
9	13.183	VV	0.0453	657.27667	230.29195	0.78438
10	13.296	VV	0.0517	103.33729	33.78326	0.12332
11	13.514	VV	0.0712	743.50562	169.40065	0.88728
12	13.735	VB	0.0744	67.52633	12.61579	0.08058
13	14.097	BB	0.0468	69.75271	23.37580	0.08324
14	14.591	BV	0.0585	2098.59155	576.32214	2.50441
15	14.736	VB	0.0503	17.37357	5.91569	0.02073
16	14.954	BV	0.0486	590.97046	188.13727	0.70525
17	15.065	VB	0.0613	1874.39172	482.52393	2.23686
18	15.451	BB	0.0896	6752.30859	1132.46240	8.05806
19	16.016	BB	0.1021	6033.44482	781.45886	7.20018
20	16.361	BB	0.0603	65.14681	17.15945	0.07774
21	16.978	BB	0.0557	60.00202	16.00448	0.07161
22	17.406	BV	0.0949	7827.52588	1101.03357	9.34120
23	17.494	VB	0.0432	1725.95361	646.00043	2.05972
24	17.674	BB	0.0465	379.72287	128.22653	0.45315
25	17.956	BV	0.0459	42.26067	14.53744	0.05043
26	18.108	VV	0.0569	372.81458	106.27178	0.44491
27	18.299	VB	0.0543	37.62137	10.38315	0.04490
28	19.177	BV	0.1015	6074.00635	1019.95465	7.24859
29	19.326	VV	0.0501	41.71920	12.76369	0.04979
30	19.462	VB	0.0820	66.31173	11.05383	0.07913
31	19.963	BV	0.1205	1.30082e4	1398.38794	15.52374
32	20.084	VB	0.0784	86.09873	16.10648	0.10275
33	20.334	BV	0.0532	713.85455	223.91669	0.85190
34	20.492	VB	0.0492	80.28712	25.19283	0.09581
35	20.860	BV	0.1027	4890.68311	657.98010	5.83644
36	21.081	VB	0.0524	1065.17542	341.72784	1.27116
37	21.348	BB	0.0561	75.31879	21.92065	0.08988
38	21.920	BV	0.0530	16.59334	5.22900	0.01980
39	22.049	VV	0.0813	30.94189	6.30450	0.03693
40	22.351	VB	0.0600	1200.17444	318.23846	1.43226
41	22.649	BB	0.0886	1505.91650	241.94321	1.79713
42	23.152	BB	0.0637	1634.03699	368.67734	1.95002
43	23.429	BB	0.0537	905.62231	280.07285	1.08075
44	23.688	BV	0.0463	19.69543	6.70154	0.02350
45	23.785	VV	0.0542	108.10616	32.99313	0.12901
46	23.940	VB	0.0508	143.39973	43.06826	0.17113
47	24.251	BB	0.0540	731.79877	224.53256	0.87331
48	24.624	BV	0.0982	124.14526	17.61983	0.14815
49	24.749	VV	0.0641	448.22153	108.61090	0.53490
50	24.935	VV	0.0543	104.56168	31.83994	0.12478
51	25.078	VB	0.0630	58.86697	14.61082	0.07025
52	25.569	BV	0.0495	74.97443	23.35397	0.08947
53	25.732	VV	0.0622	91.61410	23.14717	0.10933
54	25.873	VV	0.0506	81.86788	24.72630	0.09770
55	26.028	VV	0.0959	112.88113	15.69746	0.13471
56	26.185	VV	0.0884	178.87263	28.81478	0.21346
57	26.671	VV	0.0722	119.30130	24.77317	0.14237
58	27.005	VB	0.0807	3709.80225	713.52380	4.42720
59	27.510	BB	0.0544	148.62811	45.20401	0.17737
60	27.830	BB	0.0473	343.26059	113.34699	0.40964
61	28.189	BB	0.0581	44.84736	12.42402	0.05352

Sample Name: NARCISSUS (BMV)

Peak #	RetTime [min]	Type	Width [min]	Area [pA*s]	Height [pA]	Area %
62	28.632	BB	0.0573	16.52813	4.67296	0.01972
63	28.848	BV	0.0520	574.53809	167.37682	0.68564
64	28.964	VB	0.0638	106.26965	25.95065	0.12682
65	29.607	BV	0.0702	812.28064	188.94173	0.96936
66	29.743	VV	0.0700	966.74329	225.38638	1.15369
67	29.928	VB	0.0665	2478.67188	530.77905	2.95799
68	30.184	BB	0.0527	79.33669	25.22029	0.09468
69	30.508	BB	0.0632	244.95601	60.51200	0.29233
70	31.007	BV	0.0496	270.95999	84.12974	0.32336
71	31.197	VV	0.0758	49.52475	9.66085	0.05910
72	31.372	VB	0.0658	66.91505	15.67747	0.07985
73	32.086	BV	0.0583	1682.86914	424.18811	2.00830
74	32.200	VB	0.0950	60.21860	8.88978	0.07186
75	32.856	BV	0.0721	216.50764	45.01575	0.25838
76	33.237	VV	0.0884	73.26456	11.80999	0.08743
77	33.426	VV	0.0563	265.90030	76.90665	0.31732
78	33.681	VB	0.0705	2330.47314	538.69739	2.78114
79	34.099	BV	0.0644	1279.39502	308.10373	1.52680
80	34.205	VB	0.0458	335.93451	115.90489	0.40090
81	35.022	BB	0.0547	133.66144	36.49824	0.15951
82	36.092	BB	0.0568	151.68549	43.37539	0.18102
83	36.379	BB	0.0573	539.52649	152.32402	0.64386
84	36.841	BB	0.0562	297.81165	86.44183	0.35540
85	38.336	BV	0.0574	786.85748	221.64432	0.93902
86	38.491	VB	0.0571	23.58426	6.70011	0.02814
87	40.746	BB	0.0600	15.54554	4.12424	0.01855
88	41.201	BB	0.1039	50.83609	7.80916	0.06067
89	41.798	BV	0.0562	17.73393	5.14103	0.02116
90	41.988	VB	0.0564	542.40393	156.73213	0.64729
91	42.271	BB	0.0865	31.05581	5.80132	0.03706
92	43.647	BB	0.0625	971.10712	243.40781	1.15890
93	48.186	BB	0.0622	17.37487	4.38701	0.02073
94	51.131	BB	0.1698	117.59208	10.90773	0.14033
95	52.486	BB	0.1553	67.05135	7.03074	0.08002

Totals : 8.37957e4 1.61791e4

=====
*** End of Report ***