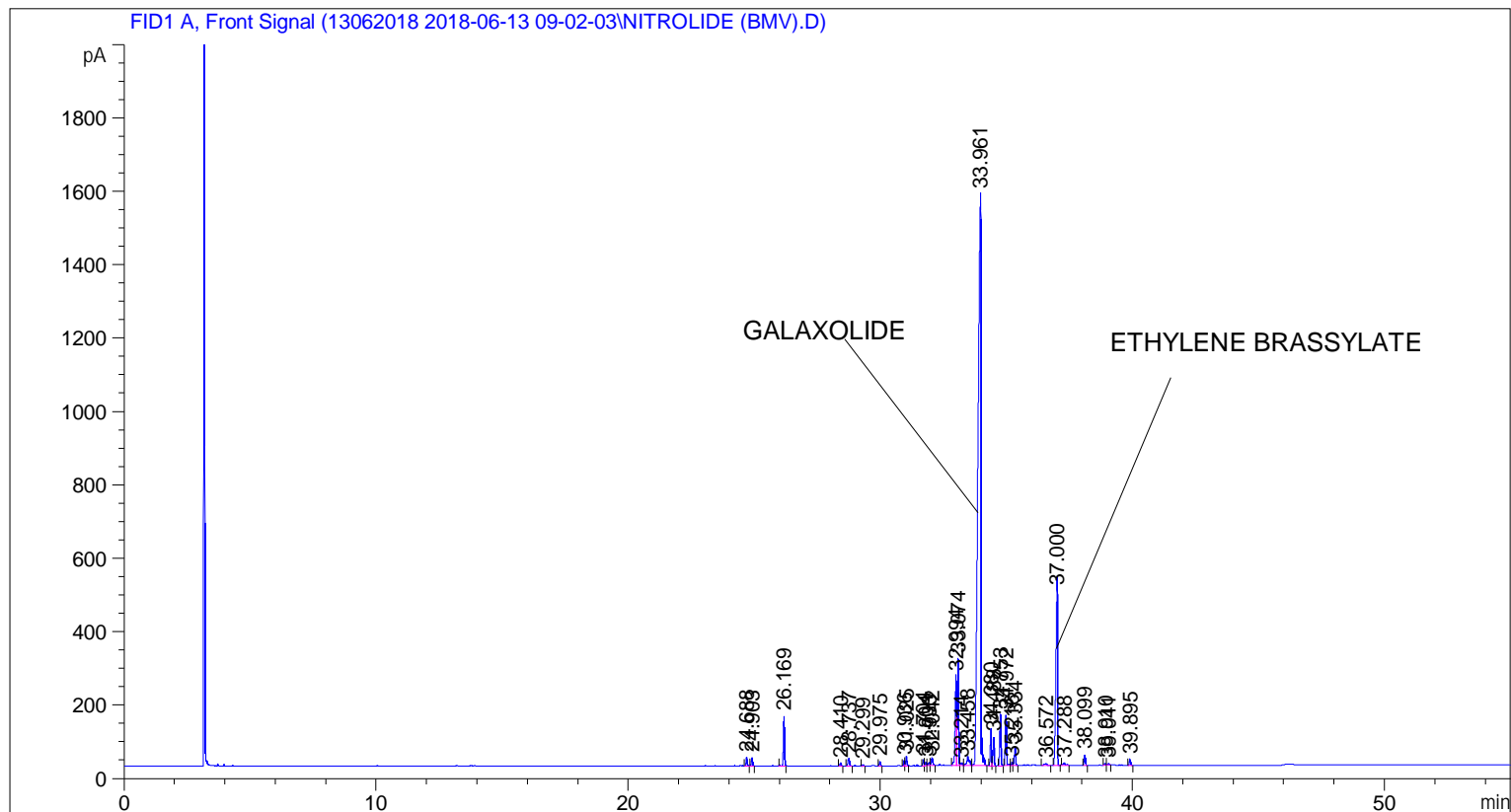


```

=====
Acq. Operator   : SYSTEM                               Seq. Line :    6
Acq. Instrument : BMV_NEW_GC_7820                     Location  : Vial 106
Injection Date  : 6/13/2018 2:56:37 PM                 Inj       :    1
                                                    Inj Volume: 0.5 µl

Acq. Method     : C:\CHEM32\2\DATA\13062018 2018-06-13 09-02-03\UNIVERSAL F.M
Last changed    : 6/13/2018 9:02:09 AM by SYSTEM
Analysis Method : C:\CHEM32\2\DATA\13062018 2018-06-13 09-02-03\UNIVERSAL F.M (Sequence
Method)
Last changed    : 6/19/2018 5:17:59 PM by SYSTEM
                  (modified after loading)
Additional Info  : Peak(s) manually integrated
  
```



=====  
 Area Percent Report  
 =====

```

Sorted By      :      Signal
Multiplier     :      1.0000
Dilution      :      1.0000
Do not use Multiplier & Dilution Factor with ISTDs
  
```

Signal 1: FID1 A, Front Signal

Peak #	RetTime [min]	Type	Width [min]	Area [pA*s]	Height [pA]	Area %
1	24.688	BB	0.0548	77.58653	23.32570	0.37571
2	24.903	BB	0.0559	83.05218	23.13705	0.40218
3	26.169	BB	0.0513	435.65707	136.25870	2.10966
4	28.410	BB	0.0506	25.62103	8.16766	0.12407
5	28.737	BB	0.0743	94.35994	21.05365	0.45694
6	29.299	BB	0.0482	11.26622	3.63410	0.05456

Peak #	RetTime [min]	Type	Width [min]	Area [pA*s]	Height [pA]	Area %
7	29.975	BB	0.0512	38.75074	12.14122	0.18765
8	30.936	BV	0.0479	46.67995	15.15634	0.22605
9	31.025	VB	0.0541	85.24149	24.79606	0.41278
10	31.704	BV	0.0525	57.22926	17.34756	0.27713
11	31.804	VV	0.0540	34.67999	10.11629	0.16794
12	31.933	VV	0.0720	39.94874	8.62410	0.19345
13	32.042	VB	0.0638	89.37902	21.82266	0.43282
14	32.994	BV	0.0623	1008.45197	243.78810	4.88340
15	33.074	VV	0.0520	949.36163	291.65488	4.59726
16	33.214	VV	0.0767	41.43037	7.96495	0.20063
17	33.458	VV	0.0916	162.01143	24.34526	0.78454
18	33.961	VB	0.1241	1.30913e4	1556.77551	63.39434
19	34.380	BV	0.0521	320.75806	98.09198	1.55326
20	34.488	VB	0.0500	240.88840	78.05322	1.16650
21	34.753	BB	0.0560	476.20721	138.89903	2.30602
22	34.972	BB	0.0564	473.66382	136.69919	2.29370
23	35.216	BV	0.0585	32.52023	8.92974	0.15748
24	35.334	VB	0.0570	166.94157	47.53513	0.80841
25	36.572	BB	0.0903	32.69387	5.00105	0.15832
26	37.000	BB	0.0761	2287.92432	475.50977	11.07921
27	37.288	BB	0.1109	53.28449	6.41782	0.25803
28	38.099	BB	0.0553	95.77480	28.40422	0.46379
29	38.910	BV	0.0544	16.57159	4.78679	0.08025
30	39.041	VB	0.0651	17.01873	4.04018	0.08241
31	39.895	BB	0.0607	64.33819	16.80746	0.31156

Totals : 2.06506e4 3499.28537

=====  
\*\*\* End of Report \*\*\*