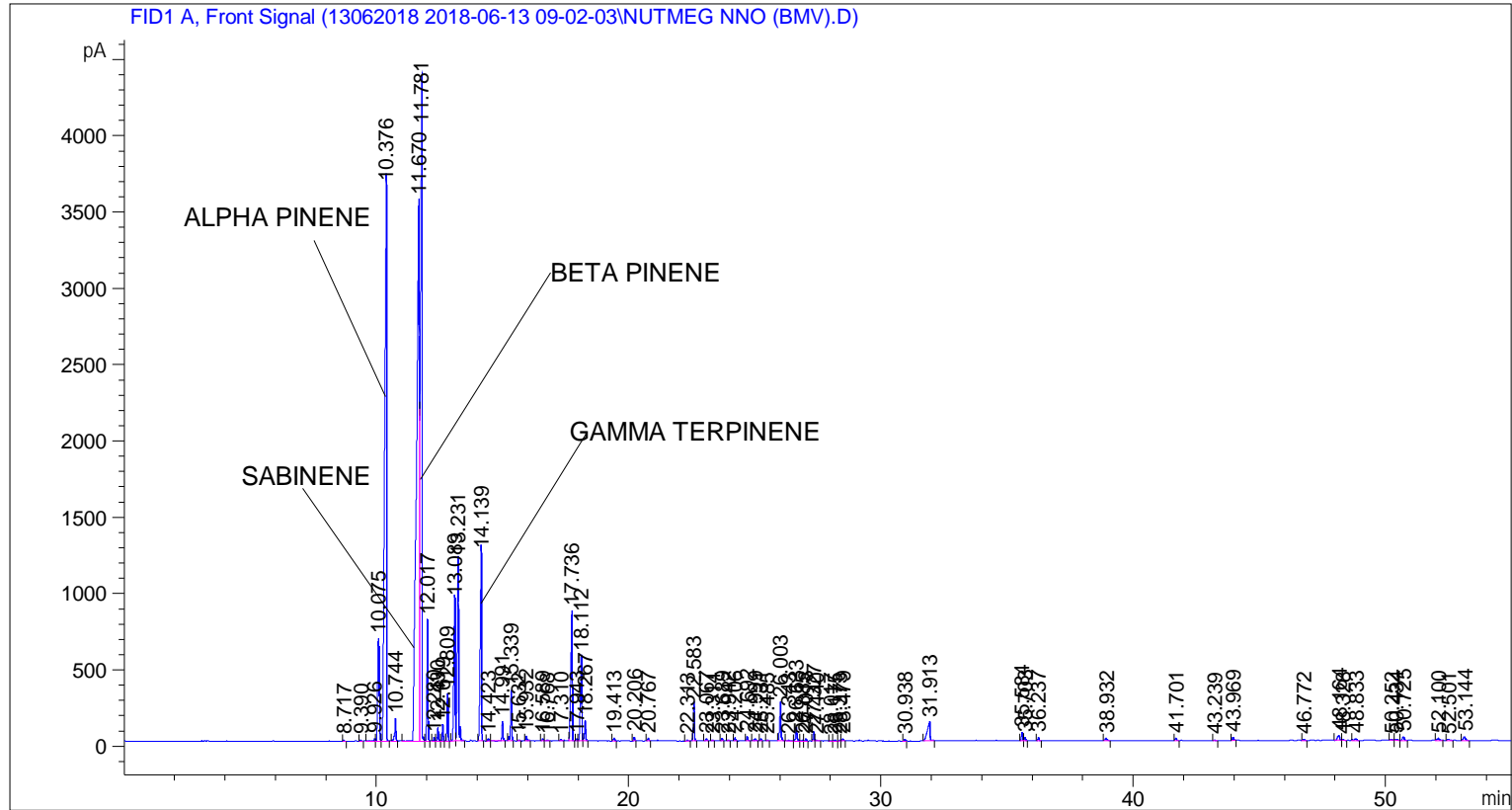


```

=====
Acq. Operator   : SYSTEM                               Seq. Line :    5
Acq. Instrument : BMV_NEW_GC_7820                     Location  : Vial 105
Injection Date  : 6/13/2018 1:48:34 PM                 Inj       :    1
                                                    Inj Volume: 0.5 µl

Acq. Method     : C:\CHEM32\2\DATA\13062018 2018-06-13 09-02-03\UNIVERSAL F.M
Last changed    : 6/13/2018 9:02:09 AM by SYSTEM
Analysis Method : C:\CHEM32\2\DATA\13062018 2018-06-13 09-02-03\UNIVERSAL F.M (Sequence
Method)
Last changed    : 6/19/2018 5:25:40 PM by SYSTEM
                  (modified after loading)
  
```



=====
 Area Percent Report
 =====

```

Sorted By       :      Signal
Multiplier      :      1.0000
Dilution        :      1.0000
Do not use Multiplier & Dilution Factor with ISTDs
  
```

Signal 1: FID1 A, Front Signal

Peak #	RetTime [min]	Type	Width [min]	Area [pA*s]	Height [pA]	Area %
1	8.717	BB	0.0446	15.00321	5.36348	0.01485
2	9.390	BB	0.0555	18.74081	5.53095	0.01855
3	9.926	BV	0.0696	84.34286	17.09717	0.08349
4	10.075	VV	0.0745	3132.00366	670.15643	3.10032
5	10.376	VB	0.0827	1.95217e4	3632.41357	19.32424
6	10.744	BB	0.0524	496.29471	143.18889	0.49127
7	11.670	BV	0.1162	2.92311e4	3546.83496	28.93538

Sample Name: NUTMEG NNO (BMV)

Peak #	RetTime [min]	Type	Width [min]	Area [pA*s]	Height [pA]	Area %
8	11.781	VV	0.0668	1.88352e4	4010.05884	18.64461
9	12.017	VB	0.0455	2266.82373	789.00885	2.24389
10	12.280	BV	0.0478	67.32138	24.70840	0.06664
11	12.430	VB	0.0526	270.18771	86.10675	0.26745
12	12.619	BB	0.0441	291.58804	106.05642	0.28864
13	12.809	BB	0.0452	860.86066	302.78482	0.85215
14	13.089	BV	0.0647	3519.58691	918.86407	3.48398
15	13.231	VB	0.0586	4325.65234	1184.07373	4.28189
16	14.139	BB	0.0563	4640.95752	1222.76184	4.59400
17	14.423	BV	0.0573	44.84873	12.67190	0.04439
18	14.991	VB	0.0480	394.03857	127.81410	0.39005
19	15.339	BB	0.0512	1091.89148	325.22131	1.08084
20	15.632	BB	0.0491	24.96257	7.85794	0.02471
21	15.932	BB	0.0591	103.65460	28.06547	0.10261
22	16.589	BV	0.0530	44.73590	14.10542	0.04428
23	16.768	VB	0.0669	29.56479	6.77733	0.02927
24	17.310	BB	0.0765	44.44186	8.56375	0.04399
25	17.736	BB	0.0649	3562.58594	849.25336	3.52654
26	17.943	BV	0.0547	52.05909	15.70510	0.05153
27	18.112	VV	0.0606	2117.70386	553.56177	2.09628
28	18.267	VB	0.0546	424.02994	128.02425	0.41974
29	19.413	BB	0.0601	69.73984	18.45839	0.06903
30	20.206	BB	0.0471	76.00488	25.27110	0.07524
31	20.767	BB	0.0532	57.92212	16.40887	0.05734
32	22.313	BB	0.0642	22.33705	5.90166	0.02211
33	22.583	BB	0.0501	786.74609	240.65068	0.77879
34	23.067	BB	0.0663	60.06292	13.93733	0.05946
35	23.314	BB	0.0463	14.48095	4.93072	0.01433
36	23.689	BB	0.0495	56.15379	17.46190	0.05559
37	23.942	BB	0.0553	31.51018	8.48381	0.03119
38	24.206	BB	0.0506	67.91647	20.51570	0.06723
39	24.692	BB	0.0598	104.43543	27.81107	0.10338
40	24.999	BB	0.0787	74.74522	13.07794	0.07399
41	25.231	BB	0.0494	42.36705	13.22248	0.04194
42	25.485	BB	0.0559	27.30579	7.25923	0.02703
43	26.003	BB	0.0569	878.62134	250.76768	0.86973
44	26.343	BV	0.0881	26.11703	4.22686	0.02585
45	26.633	VB	0.0568	343.49106	89.50469	0.34002
46	26.885	BV	0.0531	18.94854	5.38404	0.01876
47	27.018	VB	0.0488	43.00671	13.62574	0.04257
48	27.327	BV	0.0472	190.77985	63.22675	0.18885
49	27.440	VB	0.0632	23.33625	5.76352	0.02310
50	28.017	BV	0.0534	12.99437	4.04868	0.01286
51	28.175	VB	0.0596	30.89491	8.27339	0.03058
52	28.373	BV	0.0613	23.69081	6.10167	0.02345
53	28.479	VB	0.0638	54.14066	13.22094	0.05359
54	30.938	BB	0.0495	39.54623	12.30455	0.03915
55	31.913	BB	0.1208	944.53198	118.77491	0.93498
56	35.584	BV	0.0552	179.64143	53.49291	0.17782
57	35.703	VB	0.0607	88.61865	23.11461	0.08772
58	36.237	BB	0.0546	68.70067	20.77668	0.06801
59	38.932	BB	0.0786	84.26171	15.71617	0.08341
60	41.701	BB	0.0610	64.51057	16.73612	0.06386
61	43.239	BB	0.0555	17.21235	5.08592	0.01704

Peak #	RetTime [min]	Type	Width [min]	Area [pA*s]	Height [pA]	Area %
62	43.969	BB	0.0653	83.46454	19.76653	0.08262
63	46.772	BB	0.0677	33.51935	7.56734	0.03318
64	48.164	BV	0.1020	186.28079	31.06188	0.18440
65	48.328	VB	0.0726	27.79652	6.16035	0.02752
66	48.833	BB	0.0869	71.96924	12.55548	0.07124
67	50.252	BV	0.0809	35.69688	7.32487	0.03534
68	50.434	VV	0.1029	53.85214	8.38934	0.05331
69	50.725	VB	0.0832	115.74003	22.81467	0.11457
70	52.100	BB	0.1023	90.46157	13.48723	0.08955
71	52.501	BB	0.0976	39.49183	6.26256	0.03909
72	53.144	BB	0.0993	147.12041	22.80381	0.14563

Totals : 1.01022e5 2.00644e4

=====
*** End of Report ***