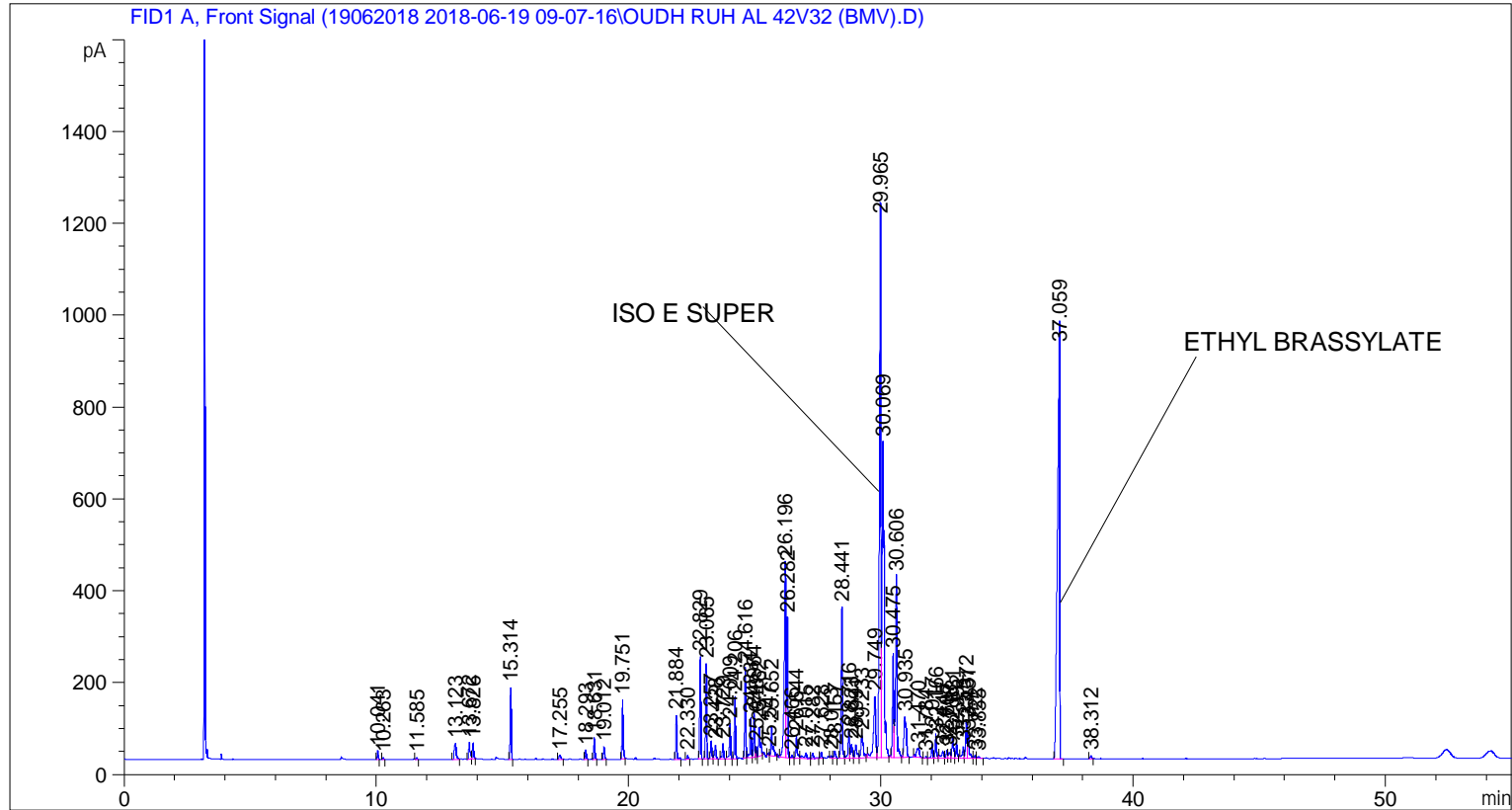


```

=====
Acq. Operator   : SYSTEM                               Seq. Line :    4
Acq. Instrument : BMV_NEW_GC_7820                     Location  : Vial 104
Injection Date  : 6/19/2018 12:45:20 PM                Inj       :    1
                                                    Inj Volume: 0.5 µl

Acq. Method    : C:\CHEM32\2\DATA\19062018 2018-06-19 09-07-16\UNIVERSAL F.M
Last changed   : 6/19/2018 9:07:21 AM by SYSTEM
Analysis Method : C:\CHEM32\2\DATA\19062018 2018-06-19 09-07-16\UNIVERSAL F.M (Sequence
Method)
Last changed   : 6/27/2018 2:00:46 PM by SYSTEM
                (modified after loading)

Additional Info : Peak(s) manually integrated
  
```



=====
 Area Percent Report
 =====

```

Sorted By      :      Signal
Multiplier     :      1.0000
Dilution      :      1.0000
Do not use Multiplier & Dilution Factor with ISTDs
  
```

Signal 1: FID1 A, Front Signal

Peak #	RetTime [min]	Type	Width [min]	Area [pA*s]	Height [pA]	Area %
1	10.041	BB	0.0444	50.60447	18.22372	0.15856
2	10.263	BB	0.0440	10.63782	3.87491	0.03333
3	11.585	BB	0.0449	12.75930	4.52874	0.03998
4	13.123	BB	0.0912	193.11644	34.54297	0.60510
5	13.672	BV	0.0627	151.12796	36.24062	0.47354
6	13.826	VB	0.0560	120.88693	33.58872	0.37878

Sample Name: OUDH RUH AL 42V32 (BMV)

Peak #	RetTime [min]	Type	Width [min]	Area [pA*s]	Height [pA]	Area %
7	15.314	BB	0.0450	443.82755	156.75766	1.39066
8	17.255	BB	0.0780	41.76385	9.01506	0.13086
9	18.293	BB	0.0476	61.44210	20.15040	0.19252
10	18.631	BB	0.0494	143.04276	47.15277	0.44820
11	19.012	BB	0.0519	87.22013	26.88334	0.27329
12	19.751	BB	0.0508	405.36966	128.54495	1.27016
13	21.884	BB	0.0500	294.83514	95.58492	0.92382
14	22.330	BB	0.0497	25.64983	8.39290	0.08037
15	22.829	BB	0.0497	681.38354	222.57669	2.13501
16	23.065	BB	0.0511	657.76770	206.78970	2.06101
17	23.257	BV	0.0542	135.29948	39.22408	0.42394
18	23.428	VB	0.0652	127.13593	30.11757	0.39836
19	23.729	BB	0.0571	124.85118	33.76425	0.39120
20	24.009	BB	0.0539	265.27512	77.50327	0.83120
21	24.206	BB	0.0530	425.22723	133.93797	1.33238
22	24.616	BV	0.0508	619.39850	196.51877	1.94079
23	24.831	VV	0.0547	297.64267	85.33366	0.93262
24	24.964	VV	0.0519	314.72610	97.00684	0.98614
25	25.048	VV	0.0416	62.40986	23.07485	0.19555
26	25.162	VB	0.0680	303.66711	63.20966	0.95149
27	25.547	BV	0.0522	19.75244	6.03522	0.06189
28	25.652	VB	0.0695	300.00040	63.03932	0.94000
29	26.196	BV	0.0694	1952.96985	426.70212	6.11932
30	26.282	VB	0.0467	907.02112	304.79962	2.84201
31	26.466	BV	0.0595	22.74696	6.10182	0.07127
32	26.644	VV	0.0625	197.69809	47.58173	0.61946
33	27.015	VB	0.0983	91.90842	12.72154	0.28798
34	27.282	BB	0.0720	59.24799	12.33991	0.18564
35	27.628	BB	0.0508	45.03579	14.26647	0.14111
36	28.013	BB	0.0447	13.68684	4.59683	0.04289
37	28.157	BB	0.0677	70.50971	15.90468	0.22093
38	28.441	BV	0.0587	1204.04492	328.80411	3.77268
39	28.716	VV	0.0591	232.37781	60.13602	0.72812
40	28.823	VV	0.0649	129.63696	29.69343	0.40620
41	28.991	VV	0.0760	148.81750	27.98315	0.46630
42	29.233	VB	0.0870	310.39679	49.58364	0.97258
43	29.749	BV	0.0913	840.42755	133.84538	2.63335
44	29.965	VV	0.0660	5021.46729	1171.76318	15.73397
45	30.069	VB	0.0749	3702.55176	686.58057	11.60135
46	30.475	BV	0.0583	861.71747	226.70593	2.70005
47	30.606	VB	0.0628	1578.70056	393.47858	4.94661
48	30.935	BB	0.0881	562.42242	88.59230	1.76226
49	31.470	BB	0.1146	170.05280	20.12446	0.53283
50	31.784	BV	0.0449	10.93575	3.87626	0.03427
51	32.017	VV	0.0577	112.42798	29.99804	0.35228
52	32.166	VB	0.0571	195.24556	52.86343	0.61177
53	32.445	BV	0.0998	98.02925	14.70646	0.30716
54	32.607	VV	0.0628	68.47977	17.08607	0.21457
55	32.718	VV	0.0800	65.71846	12.77658	0.20592
56	32.831	VV	0.0674	217.93716	47.58315	0.68287
57	32.992	VB	0.0587	131.39896	34.27676	0.41172
58	33.255	BV	0.0659	111.28025	25.01273	0.34868
59	33.372	VV	0.0549	272.75186	77.71198	0.85462
60	33.451	VB	0.0603	212.58000	49.33847	0.66609

Peak #	RetTime [min]	Type	Width [min]	Area [pA*s]	Height [pA]	Area %
61	33.722	BV	0.0562	23.95514	6.62573	0.07506
62	33.855	VB	0.0861	19.68551	3.69885	0.06168
63	37.059	BB	0.0901	5843.84668	895.88892	18.31076
64	38.312	BB	0.0690	30.29047	6.66266	0.09491

Totals : 3.19148e4 7242.02507

=====
*** End of Report ***