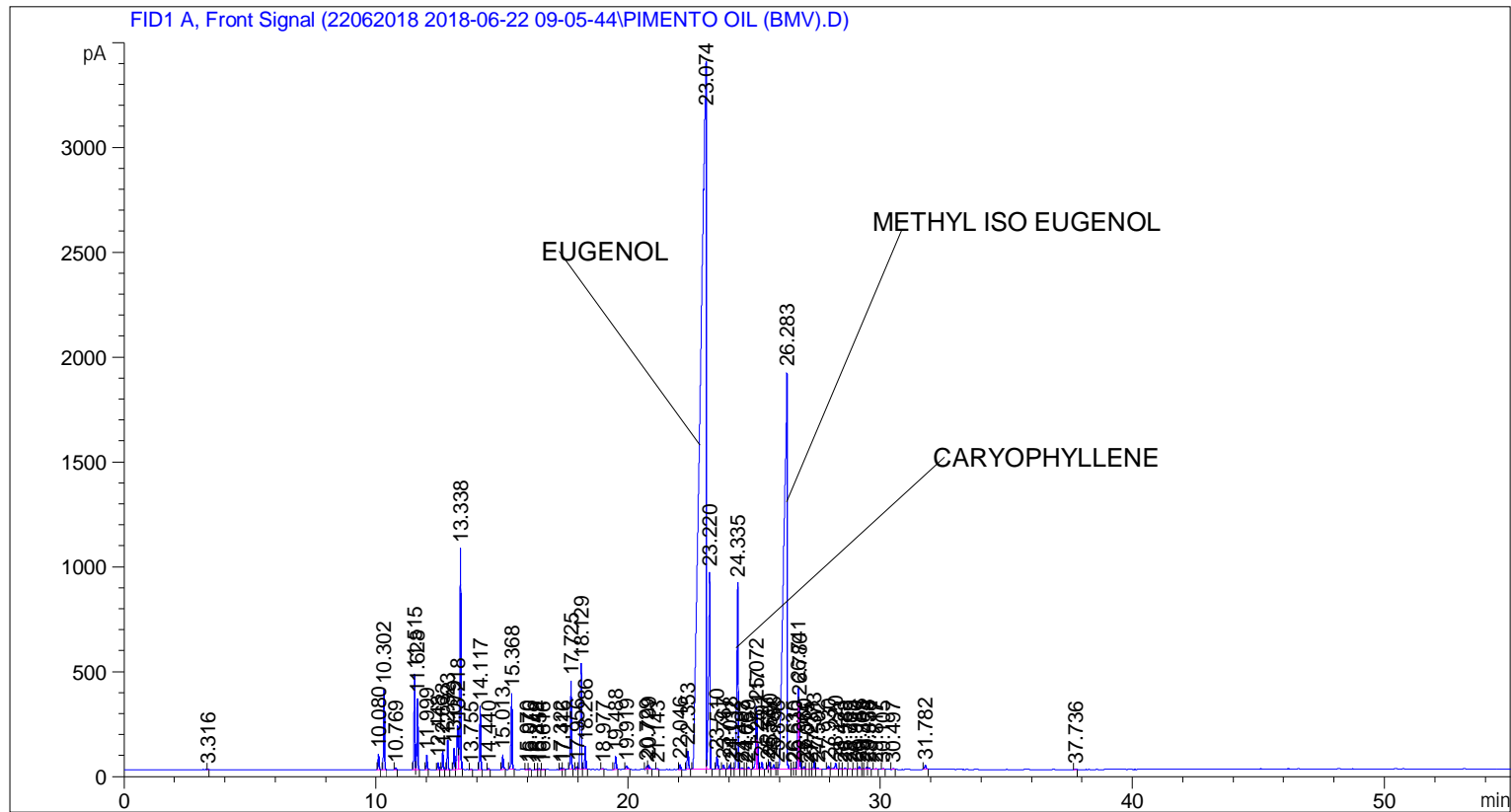


```

=====
Acq. Operator   : SYSTEM                               Seq. Line :    3
Acq. Instrument : BMV_NEW_GC_7820                     Location  : Vial 103
Injection Date  : 6/22/2018 11:39:10 AM                Inj       :    1
                                                    Inj Volume: 0.5 µl

Acq. Method    : C:\CHEM32\2\DATA\22062018 2018-06-22 09-05-44\UNIVERSAL F.M
Last changed   : 6/22/2018 9:05:49 AM by SYSTEM
Analysis Method: C:\CHEM32\2\DATA\22062018 2018-06-22 09-05-44\UNIVERSAL F.M (Sequence
Method)
Last changed   : 6/27/2018 2:23:47 PM by SYSTEM
                (modified after loading)

Additional Info : Peak(s) manually integrated
  
```



=====  
 Area Percent Report  
 =====

```

Sorted By      :      Signal
Multiplier     :      1.0000
Dilution      :      1.0000
Do not use Multiplier & Dilution Factor with ISTDs
  
```

Signal 1: FID1 A, Front Signal

Peak #	RetTime [min]	Type	Width [min]	Area [pA*s]	Height [pA]	Area %
1	3.316	BB	0.0306	5.38904	2.55461	0.00555
2	10.080	BB	0.0432	201.52415	73.09013	0.20768
3	10.302	BB	0.0430	1042.83997	379.96030	1.07470
4	10.769	BB	0.0468	20.70938	6.74741	0.02134
5	11.515	BV	0.0475	1345.94861	455.13531	1.38707
6	11.628	VB	0.0422	905.14709	338.08206	0.93280

Sample Name: PIMENTO OIL (BMV)

Peak #	RetTime [min]	Type	Width [min]	Area [pA*s]	Height [pA]	Area %
7	11.999	BB	0.0421	188.85789	68.65624	0.19463
8	12.448	BB	0.0439	90.66383	32.11480	0.09343
9	12.633	BB	0.0439	259.49445	91.95118	0.26742
10	12.823	BB	0.0452	395.62421	138.94954	0.40771
11	13.079	BV	0.0478	309.74573	101.06149	0.31921
12	13.218	VV	0.0595	774.51221	207.58852	0.79817
13	13.338	VB	0.0492	3363.37695	1054.32605	3.46613
14	13.755	BB	0.0410	6.97870	2.62890	0.00719
15	14.117	BB	0.0434	843.58905	304.11581	0.86936
16	14.440	BB	0.0453	18.56716	6.31880	0.01913
17	15.013	BB	0.0451	205.29155	70.24101	0.21156
18	15.368	BB	0.0480	1119.65039	362.56345	1.15386
19	15.970	BV	0.0450	9.77876	3.46087	0.01008
20	16.076	VB	0.0459	12.21707	4.08846	0.01259
21	16.349	BV	0.0452	9.74499	3.32566	0.01004
22	16.454	VB	0.0503	11.85279	3.61335	0.01221
23	16.616	BB	0.0557	12.24645	3.34441	0.01262
24	17.322	BV	0.0463	23.27824	7.91551	0.02399
25	17.416	VB	0.0466	15.20093	5.27436	0.01567
26	17.725	BB	0.0490	1342.16040	423.29871	1.38316
27	17.956	BV	0.0500	46.69445	14.72239	0.04812
28	18.129	VV	0.0551	1779.71460	504.99683	1.83408
29	18.286	VB	0.0465	325.09531	109.88893	0.33503
30	18.977	BB	0.0408	10.36768	4.05530	0.01068
31	19.488	BB	0.0511	196.47940	60.11754	0.20248
32	19.919	BB	0.0770	88.44686	16.11389	0.09115
33	20.729	BV	0.0522	56.20058	16.29406	0.05792
34	20.799	VB	0.0629	93.40894	20.97977	0.09626
35	21.143	BB	0.0490	17.92830	5.65478	0.01848
36	22.046	BB	0.0486	70.68438	22.54543	0.07284
37	22.353	BB	0.0575	322.82913	86.56371	0.33269
38	23.074	BV	0.1909	5.21648e4	3363.84644	53.75837
39	23.220	VB	0.0575	3822.84619	938.97638	3.93963
40	23.510	BB	0.0513	214.97960	62.27283	0.22155
41	23.767	BB	0.0494	67.33007	20.46065	0.06939
42	24.018	BV	0.0525	75.84455	21.84196	0.07816
43	24.132	VV	0.0537	19.72859	5.65707	0.02033
44	24.335	VB	0.0526	3327.71240	889.92139	3.42937
45	24.493	BV	0.0673	34.45734	7.27127	0.03551
46	24.667	VV	0.0426	5.93211	2.19322	0.00611
47	24.759	VB	0.0560	39.23880	10.63472	0.04044
48	25.072	BV	0.0504	1043.20544	301.11810	1.07507
49	25.117	VB	0.0367	357.02771	150.36591	0.36793
50	25.291	BB	0.0511	118.07741	35.27108	0.12168
51	25.537	BV	0.0416	51.08234	18.27276	0.05264
52	25.600	VV	0.0482	115.34772	36.13755	0.11887
53	25.758	VV	0.0650	101.57613	21.93850	0.10468
54	25.898	VV	0.0509	25.91061	7.39349	0.02670
55	26.283	VV	0.1103	1.71148e4	1895.53760	17.63767
56	26.535	VV	0.0508	18.24569	5.35479	0.01880
57	26.610	VV	0.0542	27.04118	7.65074	0.02787
58	26.741	VV	0.0527	1397.35193	390.59830	1.44004
59	26.780	VB	0.0278	611.45508	326.74268	0.63013
60	26.960	BV	0.0468	42.65240	14.29760	0.04396

Sample Name: PIMENTO OIL (BMV)

Peak #	RetTime [min]	Type	Width [min]	Area [pA*s]	Height [pA]	Area %
61	27.075	VB	0.0425	5.02881	1.86088	0.00518
62	27.231	BV	0.0487	10.50148	3.33776	0.01082
63	27.373	VV	0.0469	125.52612	41.90629	0.12936
64	27.502	VB	0.0659	30.38474	6.97103	0.03131
65	27.930	BB	0.0478	47.44718	15.02641	0.04890
66	28.220	BB	0.0661	132.49460	28.55165	0.13654
67	28.423	BV	0.0578	13.82923	3.68547	0.01425
68	28.588	VB	0.0684	30.19776	6.59539	0.03112
69	28.799	BB	0.0529	12.33670	3.70085	0.01271
70	28.990	BB	0.0633	17.56517	4.07151	0.01810
71	29.156	BB	0.0557	45.14882	12.04831	0.04653
72	29.303	BV	0.0553	11.95671	3.22523	0.01232
73	29.458	VV	0.0639	50.47321	11.13974	0.05202
74	29.538	VB	0.0546	23.01771	6.30482	0.02372
75	29.817	BB	0.0687	19.91681	4.16839	0.02053
76	30.105	BB	0.0507	11.22880	3.38157	0.01157
77	30.497	BB	0.0581	21.92999	5.66973	0.02260
78	31.782	BB	0.0612	80.79872	19.17077	0.08327
79	37.736	BB	0.0529	6.96103	2.03569	0.00717

Totals : 9.70356e4 1.37289e4

=====  
\*\*\* End of Report \*\*\*