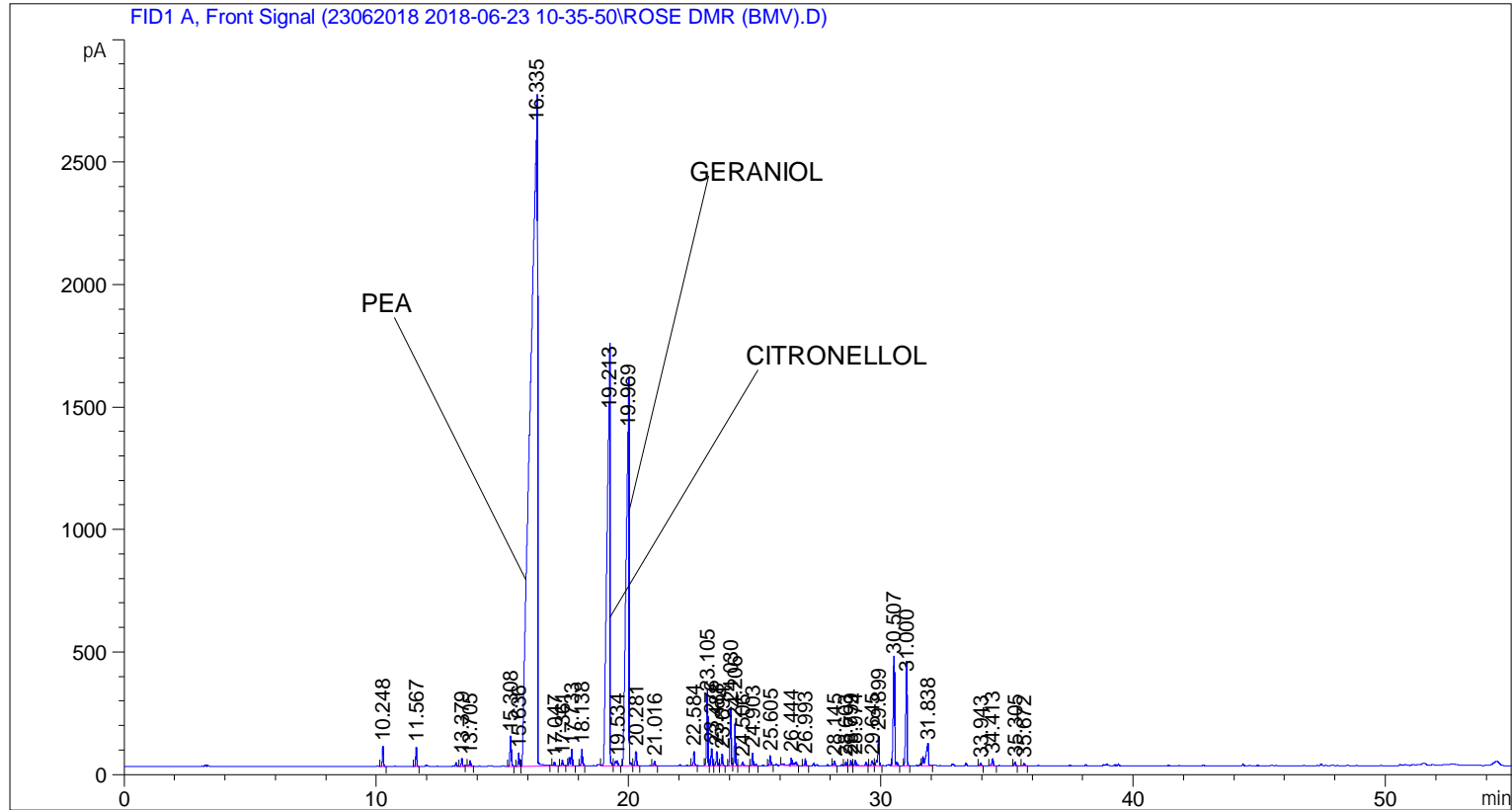


```

=====
Acq. Operator   : SYSTEM                               Seq. Line :    2
Acq. Instrument : BMV_NEW_GC_7820                     Location  : Vial 102
Injection Date  : 6/23/2018 11:50:13 AM                Inj       :    1
                                                    Inj Volume: 0.5 µl

Acq. Method     : C:\CHEM32\2\DATA\23062018 2018-06-23 10-35-50\UNIVERSAL F.M
Last changed    : 6/23/2018 10:35:58 AM by SYSTEM
Analysis Method : C:\CHEM32\2\DATA\23062018 2018-06-23 10-35-50\UNIVERSAL F.M (Sequence
Method)
Last changed    : 6/29/2018 3:40:31 PM by SYSTEM
                  (modified after loading)

Additional Info  : Peak(s) manually integrated
  
```



=====  
 Area Percent Report  
 =====

```

Sorted By      :      Signal
Multiplier     :      1.0000
Dilution      :      1.0000
Do not use Multiplier & Dilution Factor with ISTDs
  
```

Signal 1: FID1 A, Front Signal

Peak #	RetTime [min]	Type	Width [min]	Area [pA*s]	Height [pA]	Area %
1	10.248	BB	0.0535	229.67944	79.86896	0.25595
2	11.567	BB	0.0538	220.20613	76.00949	0.24540
3	13.379	BB	0.0571	97.99337	30.79443	0.10920
4	13.705	BB	0.0583	69.00172	21.02353	0.07690
5	15.308	BB	0.0633	429.62296	115.65517	0.47877
6	15.636	BV	0.0554	163.91035	54.07061	0.18266

Sample Name: ROSE DMR (BMV)

Peak #	RetTime [min]	Type	Width [min]	Area [pA*s]	Height [pA]	Area %
7	16.335	VB	0.2643	5.28231e4	2608.46826	58.86573
8	17.047	BB	0.0683	69.35941	15.47747	0.07729
9	17.361	BB	0.0635	92.51604	22.70043	0.10310
10	17.733	BB	0.0733	319.73239	65.10719	0.35631
11	18.138	BB	0.0638	250.38156	66.65517	0.27902
12	19.213	BV	0.1413	1.34149e4	1432.20251	14.94953
13	19.534	VB	0.0940	126.64238	18.93358	0.14113
14	19.969	BV	0.1228	1.19980e4	1361.29553	13.37052
15	20.281	VB	0.0697	226.23923	57.71687	0.25212
16	21.016	BB	0.0562	57.52887	18.56249	0.06411
17	22.584	BB	0.0584	191.27795	58.08428	0.21316
18	23.105	BV	0.0616	1006.45154	282.33887	1.12158
19	23.276	VV	0.0609	245.50848	69.94991	0.27359
20	23.488	VV	0.0618	210.90147	58.82296	0.23503
21	23.694	VB	0.0571	164.59029	46.77273	0.18342
22	24.030	BV	0.0572	756.20569	236.91690	0.84271
23	24.206	VB	0.0592	576.75842	171.86293	0.64274
24	24.506	BB	0.0845	85.55800	15.47413	0.09535
25	24.903	BB	0.0639	195.77406	52.02104	0.21817
26	25.605	BB	0.0608	133.49982	38.19852	0.14877
27	26.444	BB	0.1077	250.65160	31.87504	0.27932
28	26.993	BB	0.0545	83.45947	28.18964	0.09301
29	28.145	BB	0.0559	63.69546	18.64722	0.07098
30	28.603	BV	0.0598	56.64807	16.59255	0.06313
31	28.799	VV	0.0566	77.34019	22.20629	0.08619
32	28.974	VB	0.1006	160.08614	22.07654	0.17840
33	29.645	BV	0.0784	93.65432	20.08213	0.10437
34	29.899	VB	0.0654	467.43341	120.21459	0.52090
35	30.507	BB	0.0747	1876.25085	431.97665	2.09088
36	31.000	BB	0.0687	1511.77795	361.86380	1.68472
37	31.838	BB	0.1224	686.32025	81.40063	0.76483
38	33.943	BB	0.0548	39.26748	11.79643	0.04376
39	34.413	BB	0.0703	109.87600	27.66222	0.12245
40	35.305	BB	0.0590	60.48438	16.42810	0.06740
41	35.672	BB	0.0672	42.55140	10.51763	0.04742

Totals : 8.97349e4 8296.51340

=====  
\*\*\* End of Report \*\*\*