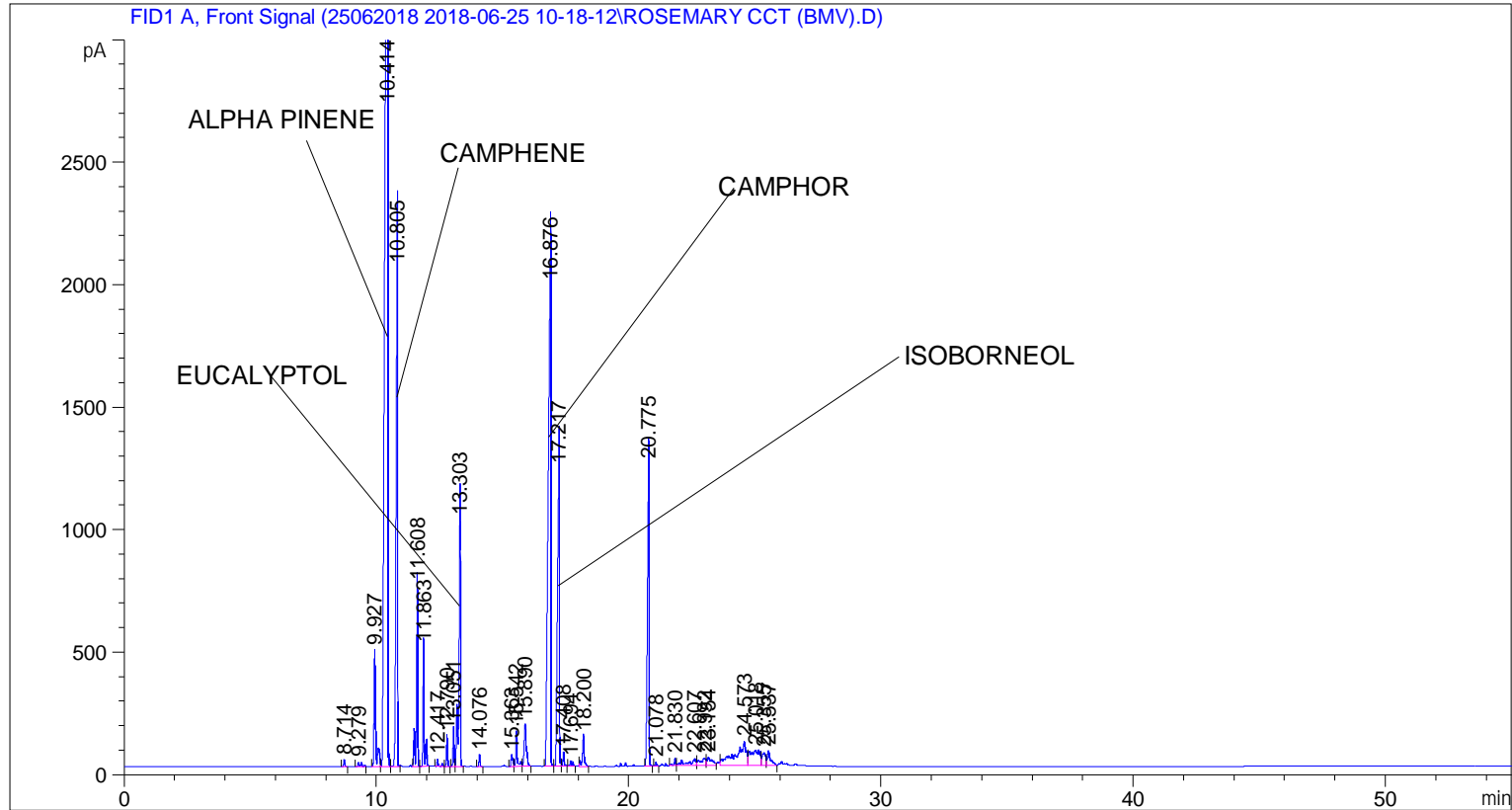


```

=====
Acq. Operator   : SYSTEM                               Seq. Line :    2
Acq. Instrument : BMV_NEW_GC_7820                     Location  : Vial 102
Injection Date  : 6/25/2018 11:32:02 AM                Inj       :    1
                                                    Inj Volume: 0.5 µl

Acq. Method     : C:\CHEM32\2\DATA\25062018 2018-06-25 10-18-12\UNIVERSAL F.M
Last changed    : 6/25/2018 10:18:17 AM by SYSTEM
Analysis Method : C:\CHEM32\2\DATA\25062018 2018-06-25 10-18-12\UNIVERSAL F.M (Sequence
Method)
Last changed    : 6/29/2018 3:51:37 PM by SYSTEM
                  (modified after loading)
  
```



=====
 Area Percent Report
 =====

```

Sorted By      :      Signal
Multiplier     :      1.0000
Dilution       :      1.0000
Do not use Multiplier & Dilution Factor with ISTDs
  
```

Signal 1: FID1 A, Front Signal

Peak #	RetTime [min]	Type	Width [min]	Area [pA*s]	Height [pA]	Area %
1	8.714	BB	0.0532	74.14265	26.07170	0.07569
2	9.279	BB	0.1000	118.22894	16.41893	0.12069
3	9.927	BV	0.0760	2277.64307	474.61453	2.32507
4	10.414	VV	0.1233	3.75660e4	4800.45117	38.34825
5	10.805	VB	0.0720	9052.78125	2033.01465	9.24128
6	11.608	BV	0.0629	2708.13257	736.58380	2.76452
7	11.863	VB	0.0636	1810.78235	484.02679	1.84849

Peak #	RetTime [min]	Type	Width [min]	Area [pA*s]	Height [pA]	Area %
8	12.417	BB	0.0680	114.00684	27.72162	0.11638
9	12.790	BB	0.0535	358.41638	124.79904	0.36588
10	13.051	BV	0.0583	520.68848	158.79036	0.53153
11	13.303	VB	0.0752	4761.12646	1005.64502	4.86026
12	14.076	BB	0.0529	130.44366	46.21545	0.13316
13	15.363	BV	0.0833	228.27414	44.87860	0.23303
14	15.542	VV	0.0682	595.10376	143.90263	0.60750
15	15.890	VB	0.0947	1039.99146	171.65984	1.06165
16	16.876	BV	0.1215	1.57303e4	1963.73755	16.05788
17	17.217	VV	0.0906	6936.61768	1215.61035	7.08105
18	17.408	VB	0.0582	187.34618	57.22400	0.19125
19	17.694	BB	0.0880	138.35559	22.43397	0.14124
20	18.200	BB	0.0854	642.35510	122.08734	0.65573
21	20.775	BB	0.0805	5970.85547	1232.16052	6.09518
22	21.078	BB	0.0553	49.73914	14.75821	0.05077
23	21.830	BV	0.0657	107.17003	27.35394	0.10940
24	22.607	VV	0.2483	511.89001	27.60551	0.52255
25	22.992	VV	0.2209	458.78125	27.74617	0.46833
26	23.154	VB	0.1724	444.38293	33.14844	0.45364
27	24.573	BV	0.3554	2781.36108	96.75016	2.83928
28	25.018	VV	0.3281	1634.54370	61.88940	1.66858
29	25.355	VV	0.1485	494.39877	51.25338	0.50469
30	25.537	VB	0.1221	516.30408	58.97282	0.52705

Totals : 9.79602e4 1.53075e4

=====
*** End of Report ***