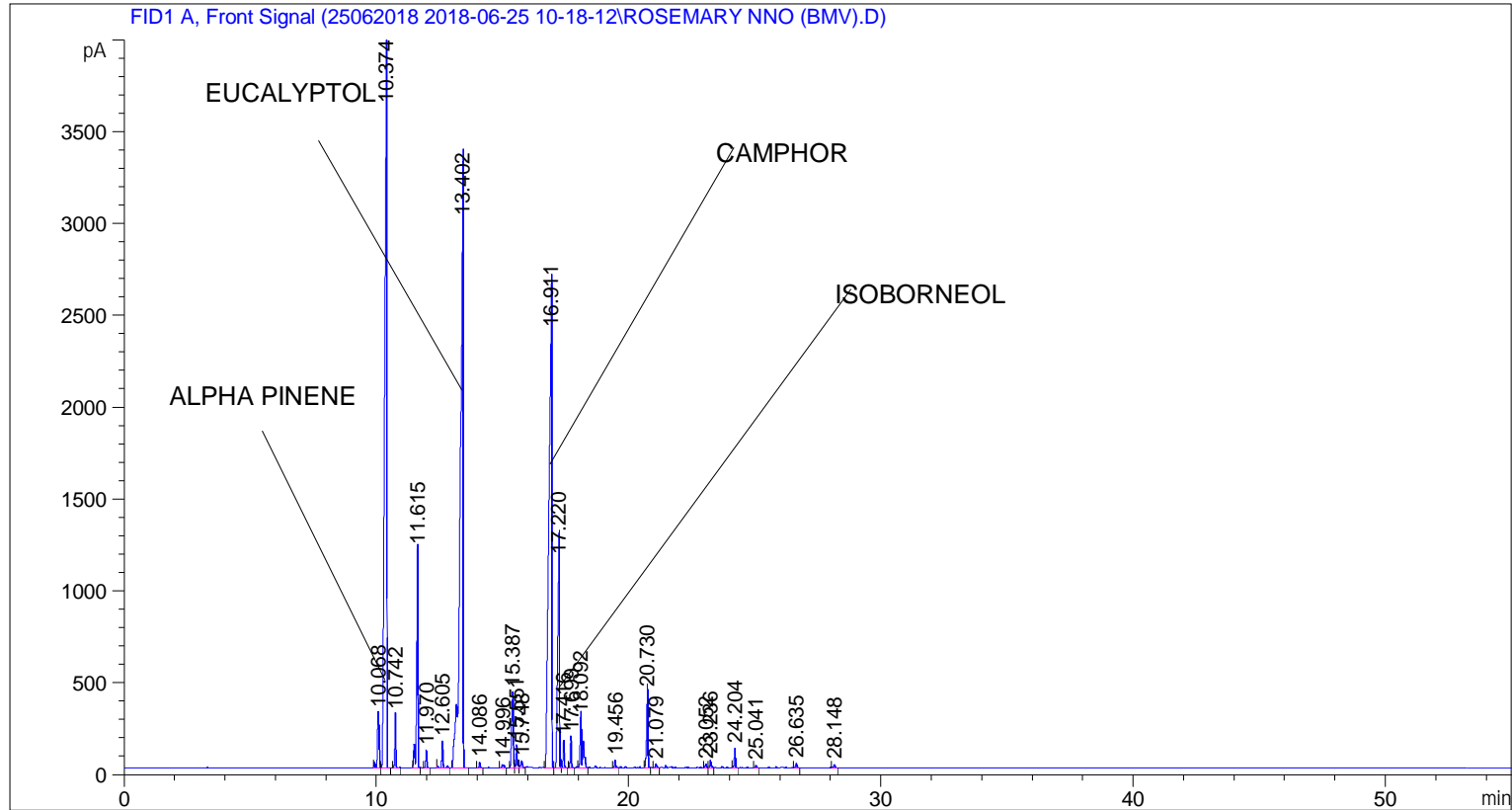


```
=====
Acq. Operator   : SYSTEM                               Seq. Line :    3
Acq. Instrument : BMV_NEW_GC_7820                     Location  : Vial 103
Injection Date  : 6/25/2018 12:42:30 PM                Inj       :    1
                                                    Inj Volume: 0.5 µl

Acq. Method     : C:\CHEM32\2\DATA\25062018 2018-06-25 10-18-12\UNIVERSAL F.M
Last changed    : 6/25/2018 10:18:17 AM by SYSTEM
Analysis Method : C:\CHEM32\2\DATA\25062018 2018-06-25 10-18-12\UNIVERSAL F.M (Sequence
Method)
Last changed    : 6/29/2018 3:56:44 PM by SYSTEM
                  (modified after loading)
=====
```



=====
 Area Percent Report
 =====

```
Sorted By      :      Signal
Multiplier     :      1.0000
Dilution       :      1.0000
Do not use Multiplier & Dilution Factor with ISTDs
```

Signal 1: FID1 A, Front Signal

Peak #	RetTime [min]	Type	Width [min]	Area [pA*s]	Height [pA]	Area %
1	10.068	BV	0.0825	1498.61414	298.87134	1.61714
2	10.374	VB	0.1040	2.40617e4	3694.83350	25.96474
3	10.742	BB	0.0529	815.70013	289.39807	0.88022
4	11.615	BB	0.0588	4367.10889	1189.98486	4.71251
5	11.970	BB	0.0558	285.79529	93.15698	0.30840
6	12.605	BB	0.0607	512.16815	146.91685	0.55268
7	13.402	BB	0.1185	2.61708e4	2979.45215	28.24068

Peak #	RetTime [min]	Type	Width [min]	Area [pA*s]	Height [pA]	Area %
8	14.086	BB	0.0523	88.16393	31.88695	0.09514
9	14.996	BB	0.0902	104.43541	16.41337	0.11270
10	15.387	BV	0.0781	1922.56116	414.75369	2.07462
11	15.551	VV	0.0566	421.68173	121.20778	0.45503
12	15.748	VB	0.0781	158.19955	34.11252	0.17071
13	16.911	BV	0.1232	2.09449e4	2368.38306	22.60152
14	17.220	VV	0.0832	6128.92432	1132.11609	6.61367
15	17.416	VB	0.0551	441.90765	146.84859	0.47686
16	17.699	BB	0.0550	511.86319	170.75998	0.55235
17	18.092	BB	0.0904	1626.94092	269.50653	1.75562
18	19.456	BB	0.0579	134.53789	41.39578	0.14518
19	20.730	BB	0.0653	1591.47266	410.17795	1.71734
20	21.079	BB	0.0601	74.63796	21.71126	0.08054
21	23.052	BV	0.0569	68.72025	19.59513	0.07416
22	23.236	VB	0.0634	160.59268	43.19592	0.17329
23	24.204	BB	0.0588	353.57977	106.29817	0.38154
24	25.041	BB	0.0601	53.08572	14.05524	0.05728
25	26.635	BB	0.0661	102.99927	26.08370	0.11115
26	28.148	BB	0.0651	69.44691	17.97528	0.07494

Totals : 9.26705e4 1.40991e4

=====
*** End of Report ***