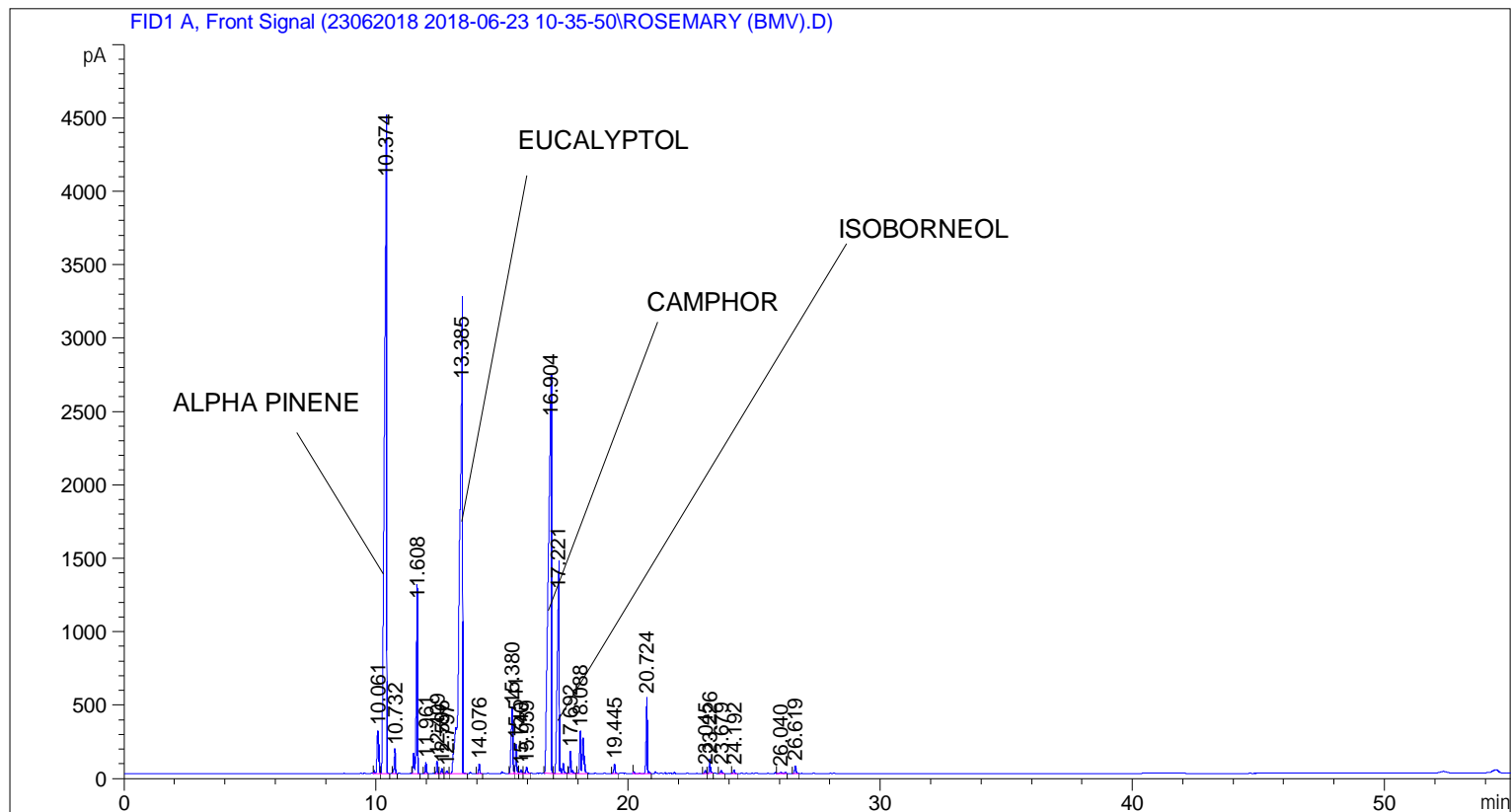


```

=====
Acq. Operator   : SYSTEM                               Seq. Line :    4
Acq. Instrument : BMV_NEW_GC_7820                     Location  : Vial 104
Injection Date  : 6/23/2018 2:10:20 PM                Inj       :    1
                                                    Inj Volume: 0.5 µl

Acq. Method     : C:\CHEM32\2\DATA\23062018 2018-06-23 10-35-50\UNIVERSAL F.M
Last changed    : 6/23/2018 10:35:58 AM by SYSTEM
Analysis Method  : C:\CHEM32\2\DATA\23062018 2018-06-23 10-35-50\UNIVERSAL F.M (Sequence
                  Method)
Last changed    : 6/29/2018 3:47:13 PM by SYSTEM
                  (modified after loading)

Additional Info  : Peak(s) manually integrated
  
```



=====
 Area Percent Report
 =====

```

Sorted By      :      Signal
Multiplier     :      1.0000
Dilution       :      1.0000
Do not use Multiplier & Dilution Factor with ISTDs
  
```

Signal 1: FID1 A, Front Signal

Peak #	RetTime [min]	Type	Width [min]	Area [pA*s]	Height [pA]	Area %
1	10.061	BV	0.0837	1487.24182	290.45282	1.53872
2	10.374	VB	0.1025	2.70796e4	4025.91724	28.01698
3	10.732	BB	0.0531	496.72455	156.40901	0.51392
4	11.608	BB	0.0668	4622.50635	1151.74756	4.78251
5	11.961	BB	0.0515	221.26611	72.69168	0.22893
6	12.409	BV	0.0548	252.58221	84.71363	0.26133

Peak #	RetTime [min]	Type	Width [min]	Area [pA*s]	Height [pA]	Area %
7	12.596	VV	0.0557	99.15545	32.40380	0.10259
8	12.797	VV	0.0609	60.90531	17.35758	0.06301
9	13.385	VB	0.1289	2.47623e4	2651.66016	25.61943
10	14.076	BB	0.0528	171.27467	60.97662	0.17720
11	15.380	BV	0.0754	2050.02588	431.63196	2.12099
12	15.541	VV	0.0562	683.36224	198.11719	0.70702
13	15.740	VV	0.0772	115.89597	23.64751	0.11991
14	15.959	VB	0.0713	171.10901	38.89761	0.17703
15	16.904	BV	0.1253	2.15975e4	2392.70923	22.34511
16	17.221	VB	0.0964	7531.79199	1213.80078	7.79250
17	17.692	BB	0.0566	504.79483	145.15050	0.52227
18	18.088	BB	0.1052	2016.56274	276.13058	2.08637
19	19.445	BB	0.0591	201.87808	60.19454	0.20887
20	20.724	BB	0.0599	1723.93274	504.16019	1.78361
21	23.045	BV	0.0575	61.10036	18.98966	0.06322
22	23.226	VB	0.0606	317.18646	91.23069	0.32817
23	23.679	BB	0.0591	65.82289	19.62321	0.06810
24	24.192	BB	0.0643	95.63675	25.17204	0.09895
25	26.040	BB	0.1432	71.17113	7.46828	0.07363
26	26.619	BB	0.0666	192.97652	48.30768	0.19966

Totals : 9.66543e4 1.40396e4

=====
*** End of Report ***