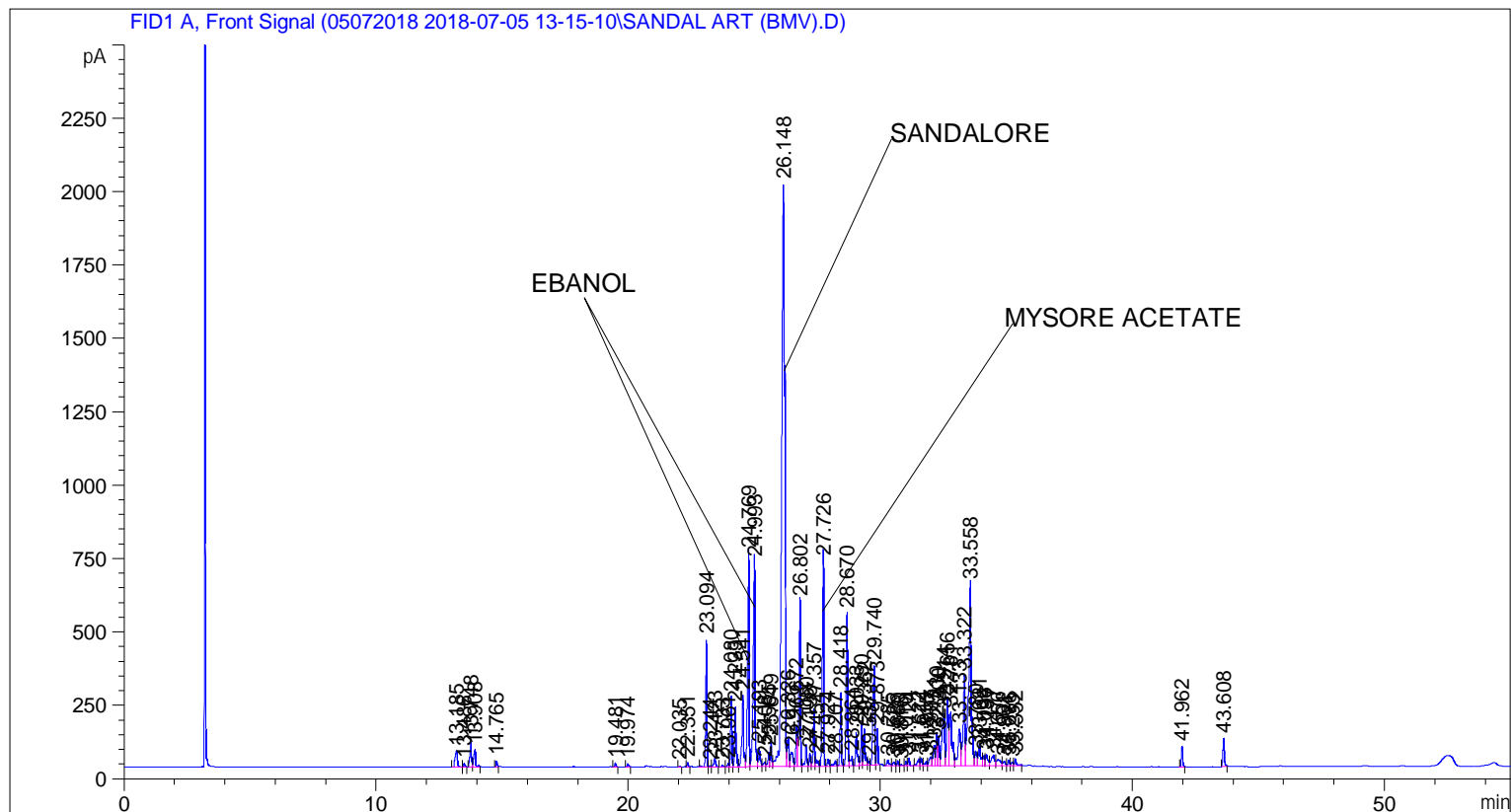


```
=====
Acq. Operator   : SYSTEM                               Seq. Line :    1
                                                    Location  : Vial 101
Injection Date  : 7/5/2018 1:20:46 PM                 Inj       :    1
Acq. Method    : UNIVERSAL F.M
Analysis Method : C:\CHEM32\2\DATA\05072018 2018-07-05 13-15-10\UNIVERSAL F.M (Sequence
Method)
Last changed   : 7/16/2018 10:58:39 AM by SYSTEM
                (modified after loading)
Additional Info : Peak(s) manually integrated
=====
```



=====
 Area Percent Report
 =====

```
Sorted By      :      Signal
Multiplier    :      1.0000
Dilution      :      1.0000
Do not use Multiplier & Dilution Factor with ISTDs
```

Signal 1: FID1 A, Front Signal

Peak #	RetTime [min]	Type	Width [min]	Area [pA*s]	Height [pA]	Area %
1	13.185	BV	0.1172	370.38290	54.53455	0.60733
2	13.486	VB	0.0570	44.14723	11.97449	0.07239
3	13.748	BV	0.0623	355.30722	82.38960	0.58261
4	13.908	VB	0.0869	301.35501	57.70666	0.49415
5	14.765	BB	0.0517	65.71506	20.34999	0.10776
6	19.481	BB	0.0559	45.57874	13.33925	0.07474
7	19.974	BB	0.0600	40.41539	10.25260	0.06627
8	22.035	BB	0.0495	10.92879	3.58679	0.01792

Sample Name: SANDAL ART (BMV)

Peak #	RetTime [min]	Type	Width [min]	Area [pA*s]	Height [pA]	Area %
9	22.351	BB	0.0472	39.25964	13.80734	0.06438
10	23.094	BV	0.0542	1420.30359	433.35651	2.32894
11	23.244	VV	0.0564	17.37661	4.77645	0.02849
12	23.423	VB	0.0756	151.48099	29.65661	0.24839
13	23.733	BV	0.0761	28.76340	5.77542	0.04716
14	23.961	VV	0.0586	49.01882	12.82382	0.08038
15	24.080	VV	0.0552	799.39563	237.79320	1.31080
16	24.233	VV	0.0604	800.92651	201.51796	1.31331
17	24.541	VV	0.0692	1153.11926	243.76865	1.89082
18	24.769	VV	0.0655	3090.20972	727.73230	5.06715
19	24.993	VV	0.0772	3529.12915	695.14136	5.78687
20	25.193	VV	0.0661	299.24390	64.55383	0.49068
21	25.408	VV	0.0793	89.51042	15.99018	0.14677
22	25.565	VV	0.0597	193.63950	49.41495	0.31752
23	25.649	VV	0.0575	312.06088	83.78621	0.51170
24	26.148	VV	0.1280	1.73377e4	1982.32556	28.42939
25	26.326	VV	0.0759	492.27429	99.25564	0.80720
26	26.476	VV	0.1214	348.41351	46.48206	0.57131
27	26.672	VV	0.0687	631.09534	139.74911	1.03484
28	26.802	VV	0.0632	2272.78857	561.82501	3.72679
29	27.050	VV	0.0628	314.61374	75.15016	0.51589
30	27.198	VV	0.0609	179.93828	44.75250	0.29505
31	27.357	VV	0.0538	660.85797	193.64891	1.08364
32	27.451	VV	0.0750	132.70889	23.82113	0.21761
33	27.726	VB	0.0628	2805.26831	699.14313	4.59992
34	27.924	BV	0.0626	92.50519	24.17621	0.15168
35	28.207	VV	0.0810	102.66846	17.87802	0.16835
36	28.418	VV	0.0534	839.36786	248.79645	1.37635
37	28.670	VV	0.0678	2218.72803	519.45490	3.63815
38	28.864	VV	0.0758	181.72473	33.22219	0.29798
39	29.033	VV	0.0674	517.07013	112.95318	0.84786
40	29.250	VV	0.0535	498.14886	147.19354	0.81684
41	29.362	VV	0.0624	522.66907	125.94292	0.85704
42	29.537	VV	0.0502	46.57403	14.21969	0.07637
43	29.740	VV	0.0856	1728.72241	338.67743	2.83466
44	29.873	VB	0.0493	371.39819	122.68567	0.60900
45	30.285	BB	0.0843	107.23506	19.46018	0.17584
46	30.525	BV	0.0849	65.96312	11.50768	0.10816
47	30.680	VV	0.0565	58.37285	16.80082	0.09572
48	30.816	VV	0.0691	23.43946	4.96017	0.03843
49	31.010	VV	0.0618	61.25689	15.61834	0.10045
50	31.124	VB	0.0553	93.52036	26.42400	0.15335
51	31.522	BV	0.0821	134.10646	22.96621	0.21990
52	31.614	VV	0.0638	109.09978	26.60767	0.17890
53	31.815	VV	0.0756	83.14214	15.75711	0.13633
54	31.997	VV	0.0998	223.55298	30.40464	0.36657
55	32.131	VV	0.0669	319.74512	70.52018	0.52430
56	32.230	VV	0.0582	417.25110	110.25127	0.68419
57	32.300	VV	0.0631	405.10382	100.33519	0.66427
58	32.514	VV	0.0998	1303.46399	177.14168	2.13735
59	32.656	VV	0.0712	1095.59155	223.27814	1.79649
60	32.781	VV	0.1094	1370.68872	183.06165	2.24758
61	33.133	VV	0.1181	982.50787	124.40937	1.61106
62	33.322	VV	0.0756	1591.67627	311.63873	2.60994

Sample Name: SANDAL ART (BMV)

Peak #	RetTime [min]	Type	Width [min]	Area [pA*s]	Height [pA]	Area %
63	33.558	VV	0.0955	4309.46729	617.11169	7.06643
64	33.780	VV	0.0894	282.25128	47.43405	0.46282
65	33.921	VV	0.0850	438.38431	72.07474	0.71884
66	34.096	VV	0.0685	165.20538	35.34836	0.27089
67	34.197	VV	0.0905	256.28436	39.09287	0.42024
68	34.477	VV	0.1190	332.50928	36.25448	0.54523
69	34.656	VV	0.1436	236.59346	21.63320	0.38795
70	34.901	VV	0.0882	91.41635	14.77299	0.14990
71	35.086	VV	0.0699	86.74282	18.78590	0.14224
72	35.233	VV	0.0925	74.85086	12.74715	0.12274
73	35.352	VB	0.0821	130.02853	22.95647	0.21321
74	41.962	BB	0.0583	251.31480	69.27428	0.41209
75	43.608	BB	0.0629	381.84116	94.94328	0.62612

Totals : 6.09851e4 1.12390e4

=====
*** End of Report ***