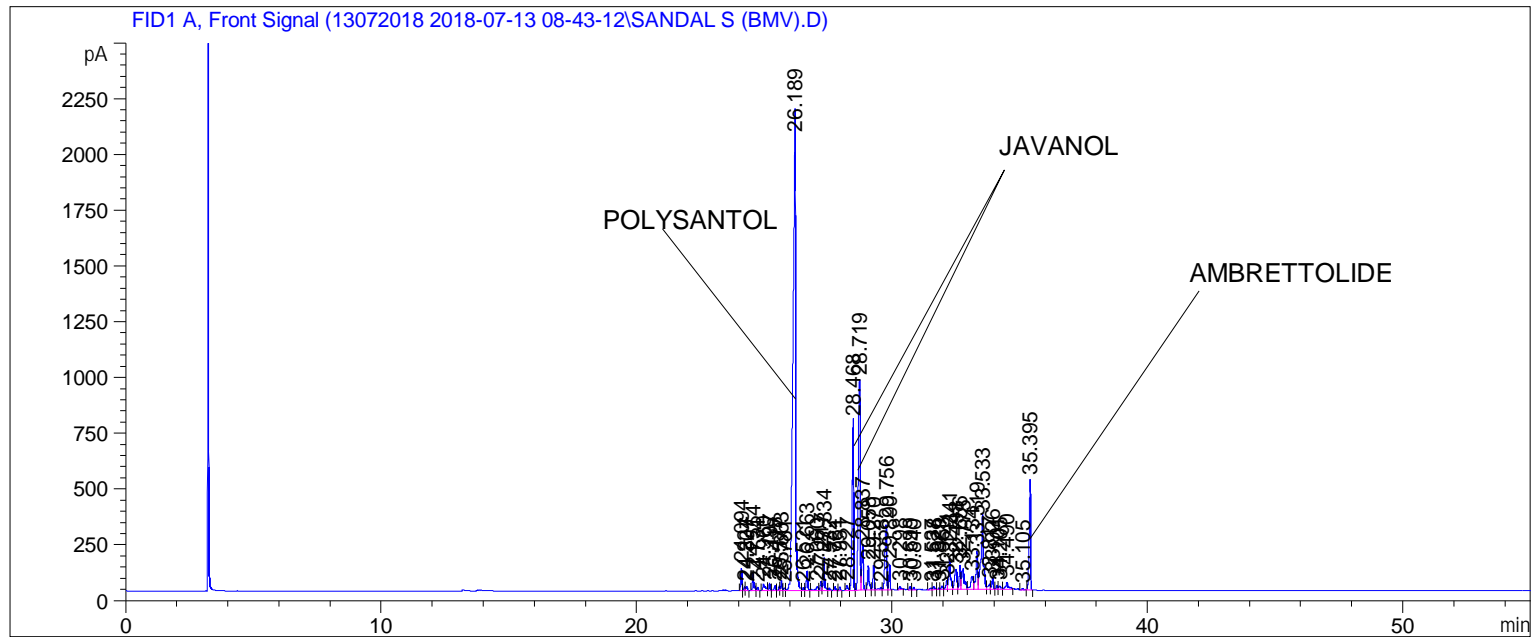


Sample Name: SANDAL S (BMV)

```

=====
Acq. Operator   : SYSTEM                               Seq. Line :    4
Acq. Instrument : BMV_NEW_GC_7820                     Location  : Vial 104
Injection Date  : 7/13/2018 12:20:36 PM              Inj       :    1
                                                    Inj Volume: 0.5 µl

Acq. Method     : C:\CHEM32\2\DATA\13072018 2018-07-13 08-43-12\UNIVERSAL BMV.M
Last changed    : 7/13/2018 8:43:19 AM by SYSTEM
Analysis Method : C:\CHEM32\2\DATA\13072018 2018-07-13 08-43-12\UNIVERSAL BMV.M (Sequence
Method)
Last changed    : 7/16/2018 11:13:28 AM by SYSTEM
                  (modified after loading)
Additional Info  : Peak(s) manually integrated
=====
    
```



Area Percent Report

```

Sorted By      :      Signal
Multiplier     :      1.0000
Dilution      :      1.0000
Do not use Multiplier & Dilution Factor with ISTDs
    
```

Signal 1: FID1 A, Front Signal

Peak #	RetTime [min]	Type	Width [min]	Area [pA*s]	Height [pA]	Area %
1	24.094	BV	0.0510	322.31192	101.61445	0.83971
2	24.224	VV	0.0565	60.19283	16.51471	0.15682
3	24.307	VB	0.0531	65.52966	18.61538	0.17072
4	24.554	BV	0.0603	307.52341	77.56683	0.80118
5	24.734	VB	0.0543	49.67493	14.39362	0.12942
6	24.960	BV	0.0953	196.53398	28.21776	0.51203
7	25.197	VV	0.0522	110.24408	33.69316	0.28722
8	25.418	VV	0.0693	109.41220	23.96657	0.28505
9	25.577	VV	0.0492	69.12142	21.66950	0.18008
10	25.663	VV	0.0550	159.34975	45.37024	0.41515

Sample Name: SANDAL S (BMV)

```

=====
Acq. Operator   : SYSTEM                               Seq. Line :    4
Acq. Instrument : BMV_NEW_GC_7820                       Location  : Vial 104
Injection Date  : 7/13/2018 12:20:36 PM                Inj       :    1
                                                    Inj Volume: 0.5 µl

Acq. Method     : C:\CHEM32\2\DATA\13072018 2018-07-13 08-43-12\UNIVERSAL BMV.M
Last changed    : 7/13/2018 8:43:19 AM by SYSTEM
Analysis Method : C:\CHEM32\2\DATA\13072018 2018-07-13 08-43-12\UNIVERSAL BMV.M (Sequence
Method)
Last changed    : 7/16/2018 11:13:28 AM by SYSTEM
                  (modified after loading)
Additional Info  : Peak(s) manually integrated
=====

```

Peak #	RetTime [min]	Type	Width [min]	Area [pA*s]	Height [pA]	Area %
11	25.781	VV	0.0594	49.78669	12.79114	0.12971
12	26.189	VV	0.0946	1.43907e4	2033.61389	37.49170
13	26.521	VV	0.0506	46.41191	14.01984	0.12092
14	26.663	VB	0.0574	317.47275	85.33134	0.82710
15	27.060	BV	0.1058	128.74648	16.72274	0.33542
16	27.217	VV	0.0686	174.87665	40.33749	0.45560
17	27.334	VV	0.0563	533.08429	146.91698	1.38883
18	27.532	VB	0.0661	52.68296	12.25620	0.13725
19	27.761	BB	0.0561	58.52856	16.23348	0.15248
20	27.951	BB	0.0547	57.45687	16.48031	0.14969
21	28.227	BV	0.0734	104.33611	21.20522	0.27182
22	28.468	VV	0.0647	3151.61914	754.49115	8.21084
23	28.719	VV	0.0878	5125.23193	937.56763	13.35264
24	28.837	VB	0.0697	887.38361	200.10396	2.31188
25	29.058	BV	0.0631	464.25018	110.35980	1.20950
26	29.270	VV	0.0536	372.36810	109.78080	0.97012
27	29.558	VV	0.0996	85.07451	11.86972	0.22164
28	29.756	VV	0.0805	1460.14709	291.32300	3.80409
29	29.890	VB	0.0492	345.76941	114.57487	0.90082
30	30.298	BB	0.0706	66.44344	14.73153	0.17310
31	30.699	BV	0.0590	49.83798	13.51251	0.12984
32	30.840	VB	0.0625	42.67985	10.27589	0.11119
33	31.537	BV	0.0715	46.74047	9.15786	0.12177
34	31.628	VB	0.0644	59.43624	13.75345	0.15485
35	31.829	BV	0.0514	21.25414	6.63619	0.05537
36	31.953	VV	0.0701	72.30175	16.18863	0.18837
37	32.141	VV	0.0650	177.43326	40.57975	0.46226
38	32.241	VV	0.0743	675.49219	135.06030	1.75984
39	32.498	VV	0.1093	629.62573	88.20164	1.64035
40	32.656	VV	0.0652	463.65826	109.84898	1.20796
41	32.775	VV	0.1011	636.50348	91.55817	1.65827
42	33.134	VV	0.1176	458.46329	58.42232	1.19442
43	33.319	VV	0.0704	827.16913	171.13286	2.15500
44	33.533	VV	0.0935	2237.94482	328.54373	5.83046
45	33.817	VV	0.0987	152.86769	21.55285	0.39826
46	33.926	VB	0.0597	190.01886	50.76691	0.49505
47	34.101	BV	0.0630	65.29825	16.21890	0.17012
48	34.205	VV	0.0776	80.27648	15.19765	0.20914
49	34.490	VB	0.0967	221.17836	31.20463	0.57623
50	35.105	BB	0.0908	43.19116	6.92275	0.11252
51	35.395	BB	0.0613	1910.03503	491.90475	4.97617

Sample Name: SANDAL S (BMV)

```
=====
Acq. Operator   : SYSTEM                               Seq. Line :    4
Acq. Instrument : BMV_NEW_GC_7820                     Location  : Vial 104
Injection Date  : 7/13/2018 12:20:36 PM                Inj       :    1
                                                    Inj Volume: 0.5 µl

Acq. Method     : C:\CHEM32\2\DATA\13072018 2018-07-13 08-43-12\UNIVERSAL BMV.M
Last changed    : 7/13/2018 8:43:19 AM by SYSTEM
Analysis Method : C:\CHEM32\2\DATA\13072018 2018-07-13 08-43-12\UNIVERSAL BMV.M (Sequence
Method)
Last changed    : 7/16/2018 11:13:28 AM by SYSTEM
                  (modified after loading)
Additional Info : Peak(s) manually integrated
=====
```

Peak #	RetTime [min]	Type	Width [min]	Area [pA*s]	Height [pA]	Area %
----- ----- ----- ----- ----- ----- -----						
Totals :				3.83837e4	7068.97401	

```
=====
*** End of Report ***
```