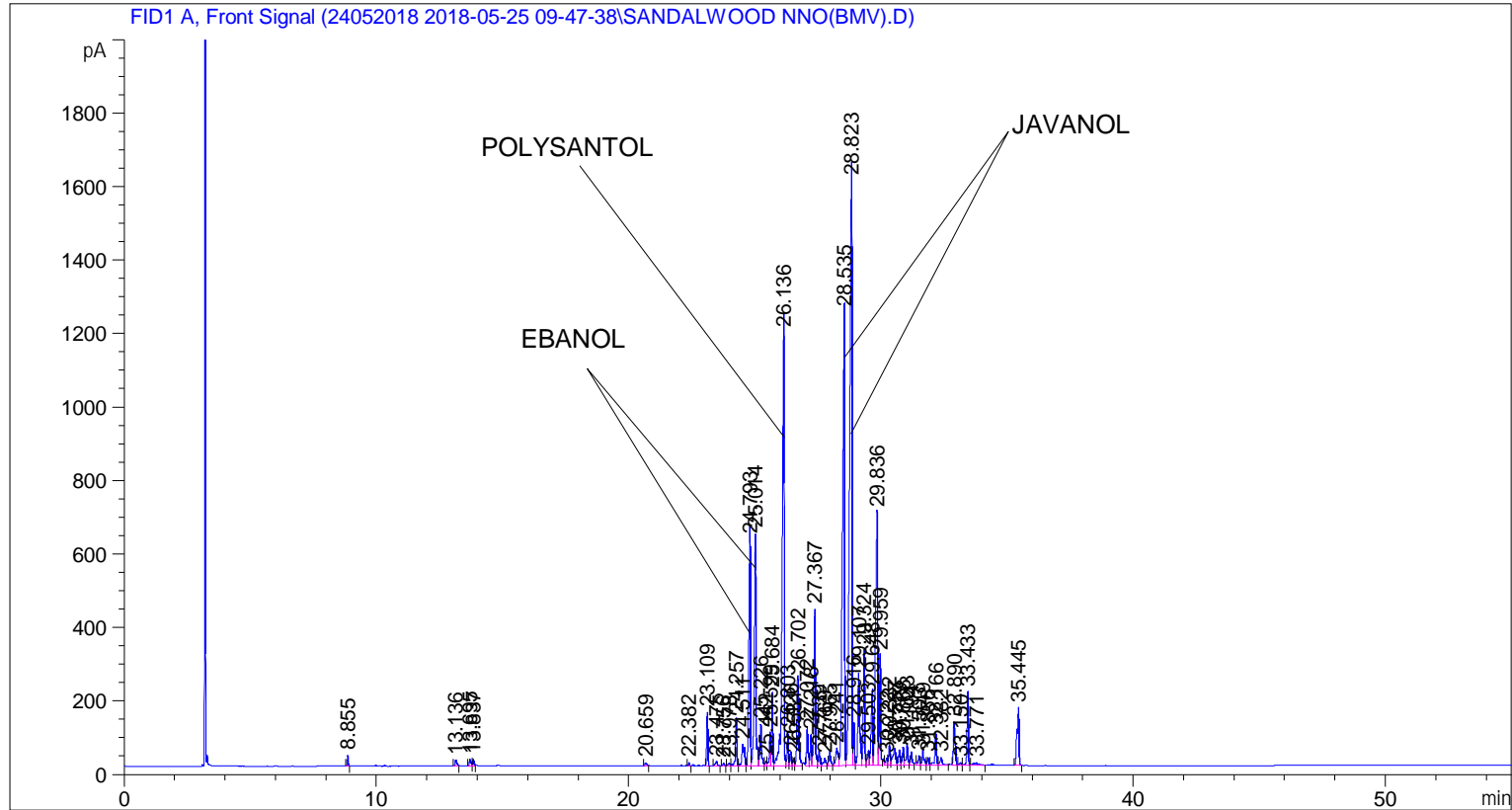


```

=====
Acq. Operator   : SYSTEM                               Seq. Line :    2
Acq. Instrument : BMV_NEW_GC_7820                     Location  : Vial 102
Injection Date  : 5/25/2018 11:06:21 AM              Inj       :    1
                                                    Inj Volume: 0.5 µl

Acq. Method     : C:\CHEM32\2\DATA\24052018 2018-05-25 09-47-38\UNIVERSAL F.M
Last changed    : 5/25/2018 9:47:43 AM by SYSTEM
Analysis Method : C:\CHEM32\2\DATA\24052018 2018-05-25 09-47-38\UNIVERSAL F.M (Sequence
Method)
Last changed    : 7/16/2018 10:53:13 AM by SYSTEM
                  (modified after loading)

Additional Info : Peak(s) manually integrated
  
```



=====  
 Area Percent Report  
 =====

```

Sorted By       :      Signal
Multiplier      :      1.0000
Dilution       :      1.0000
Do not use Multiplier & Dilution Factor with ISTDs
  
```

Signal 1: FID1 A, Front Signal

Peak #	RetTime [min]	Type	Width [min]	Area [pA*s]	Height [pA]	Area %
1	8.855	BB	0.0425	79.39117	30.33186	0.15241
2	13.136	BB	0.0779	84.89976	16.54479	0.16299
3	13.695	BV	0.0626	83.73374	19.31422	0.16075
4	13.837	VB	0.0490	61.32948	18.33961	0.11774
5	20.659	BB	0.0737	44.08539	8.60987	0.08463
6	22.382	BB	0.0467	23.50822	8.39599	0.04513

Sample Name: SANDALWOOD NNO(BMV)

Peak #	RetTime [min]	Type	Width [min]	Area [pA*s]	Height [pA]	Area %
7	23.109	BB	0.0502	451.90790	145.59567	0.86757
8	23.475	BB	0.0809	65.29877	11.39363	0.12536
9	23.756	BB	0.0555	26.65729	7.49946	0.05118
10	23.978	BV	0.0832	39.81421	6.91391	0.07643
11	24.257	VV	0.0571	479.71521	129.99805	0.92095
12	24.511	VV	0.0973	419.77689	58.75935	0.80588
13	24.793	VV	0.0674	2614.85596	616.95819	5.01997
14	25.014	VV	0.0738	3031.11841	633.34808	5.81911
15	25.226	VB	0.0639	485.45758	113.48710	0.93198
16	25.442	BV	0.0651	54.46437	11.97470	0.10456
17	25.599	VV	0.0551	322.60922	91.63885	0.61934
18	25.684	VV	0.0506	621.11426	197.86069	1.19241
19	26.136	VV	0.0830	6567.73633	1178.82385	12.60867
20	26.303	VV	0.0560	326.24500	90.61295	0.62632
21	26.426	VV	0.0617	152.86580	39.05772	0.29347
22	26.531	VV	0.0559	71.61847	19.94463	0.13749
23	26.702	VB	0.0911	1387.77368	241.40762	2.66423
24	27.072	BV	0.0614	431.02454	106.15249	0.82748
25	27.218	VV	0.0581	319.09595	84.39432	0.61260
26	27.367	VV	0.0596	1595.11218	426.79306	3.06228
27	27.539	VV	0.0670	165.45639	37.84723	0.31764
28	27.769	VB	0.0866	125.95227	20.24108	0.24180
29	27.965	BB	0.0716	187.21867	39.29201	0.35942
30	28.241	BV	0.0977	317.14777	46.43976	0.60886
31	28.535	VV	0.0966	7471.75049	1234.04077	14.34419
32	28.823	VV	0.0885	1.01643e4	1591.98682	19.51333
33	28.916	VV	0.0445	341.36932	115.51391	0.65536
34	29.107	VV	0.0739	1281.90820	249.71397	2.46099
35	29.324	VV	0.0586	1192.77930	312.25446	2.28989
36	29.503	VV	0.0806	220.85497	42.51472	0.42400
37	29.648	VV	0.0743	923.17291	206.12984	1.77230
38	29.836	VV	0.1001	4131.33301	687.93964	7.93129
39	29.959	VB	0.0530	999.64844	299.20956	1.91911
40	30.222	BV	0.0687	87.13360	18.56796	0.16728
41	30.332	VV	0.0668	249.39091	57.32647	0.47878
42	30.537	VV	0.1154	371.71005	46.42193	0.71361
43	30.719	VV	0.0652	176.10802	41.72657	0.33809
44	30.868	VV	0.0621	202.15514	49.02399	0.38810
45	31.033	VB	0.0668	275.45493	58.67399	0.52882
46	31.194	BB	0.0662	164.72279	36.84327	0.31623
47	31.503	BV	0.0745	131.88641	25.44761	0.25319
48	31.649	VV	0.0728	205.25523	39.35814	0.39405
49	31.856	VV	0.0644	90.77056	21.02295	0.17426
50	32.166	VB	0.0645	383.53940	92.27242	0.73632
51	32.382	BB	0.0966	138.62659	20.57248	0.26613
52	32.890	BB	0.0704	570.41791	117.92862	1.09508
53	33.150	BV	0.0866	46.23958	7.23452	0.08877
54	33.433	VB	0.0550	694.76367	197.81914	1.33380
55	33.771	BB	0.1536	70.94840	5.93109	0.13621
56	35.445	BB	0.0762	865.80469	157.39044	1.66216

Totals : 5.20890e4 1.01908e4

Sample Name: SANDALWOOD NNO(BMV)

=====

\*\*\* End of Report \*\*\*