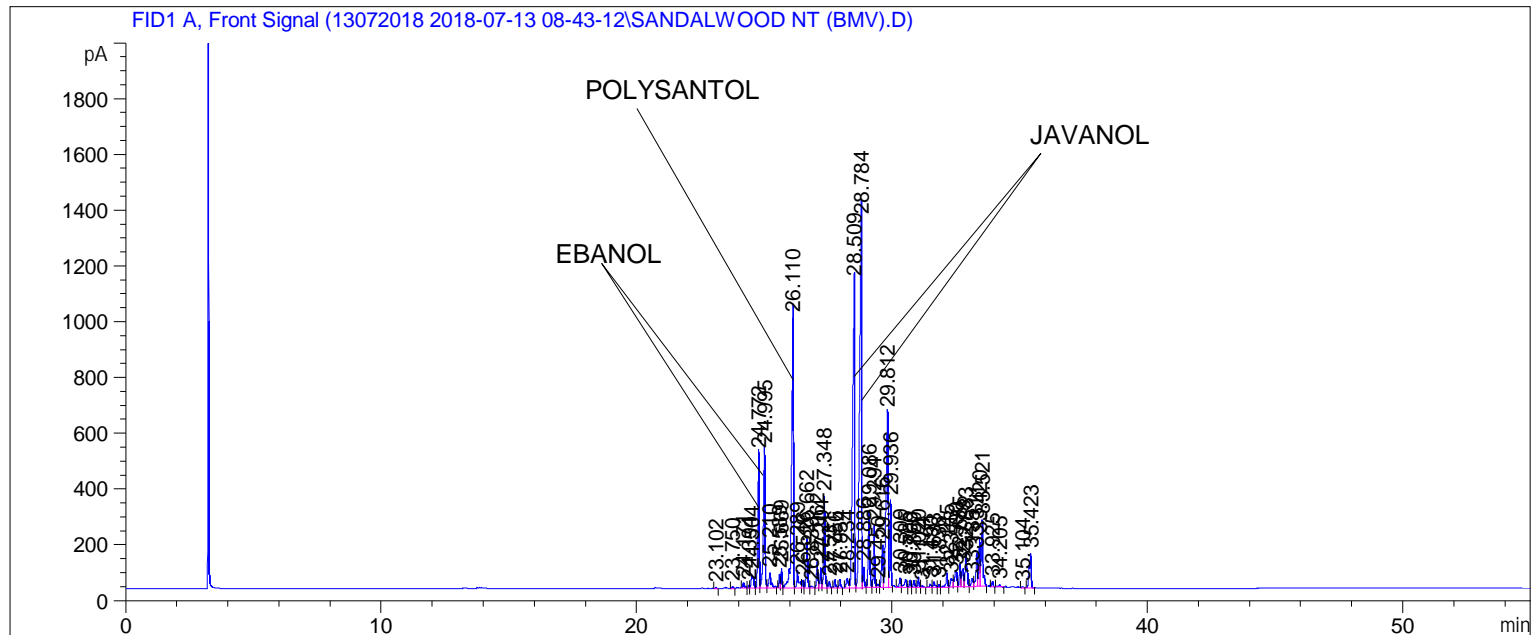


Sample Name: SANDALWOOD NT (BMV)

```

=====
Acq. Operator   : SYSTEM                               Seq. Line :    3
Acq. Instrument : BMV_NEW_GC_7820                     Location  : Vial 103
Injection Date  : 7/13/2018 11:11:58 AM              Inj       :    1
                                                    Inj Volume: 0.5 µl

Acq. Method     : C:\CHEM32\2\DATA\13072018 2018-07-13 08-43-12\UNIVERSAL BMV.M
Last changed    : 7/13/2018 8:43:19 AM by SYSTEM
Analysis Method : C:\CHEM32\2\DATA\13072018 2018-07-13 08-43-12\UNIVERSAL BMV.M (Sequence
Method)
Last changed    : 7/16/2018 11:10:20 AM by SYSTEM
                  (modified after loading)
Additional Info  : Peak(s) manually integrated
=====
    
```



Area Percent Report

```

Sorted By      :      Signal
Multiplier     :      1.0000
Dilution       :      1.0000
Do not use Multiplier & Dilution Factor with ISTDs
    
```

Signal 1: FID1 A, Front Signal

Peak #	RetTime [min]	Type	Width [min]	Area [pA*s]	Height [pA]	Area %
1	23.102	BB	0.0514	14.42531	4.49612	0.03562
2	23.750	BB	0.0518	21.11707	6.52111	0.05215
3	24.171	BB	0.0659	86.47632	19.45425	0.21356
4	24.394	BV	0.0461	31.47419	10.75559	0.07773
5	24.504	VV	0.0871	306.79739	47.68734	0.75767
6	24.772	VV	0.0607	1846.16541	481.51215	4.55929
7	24.995	VV	0.0673	2204.57300	501.24460	5.44441
8	25.210	VB	0.0885	348.72318	54.60986	0.86121
9	25.589	BV	0.0483	155.18031	49.84352	0.38323
10	25.669	VV	0.0498	216.45512	70.49364	0.53456

Sample Name: SANDALWOOD NT (BMV)

```

=====
Acq. Operator   : SYSTEM                               Seq. Line :    3
Acq. Instrument : BMV_NEW_GC_7820                       Location  : Vial 103
Injection Date  : 7/13/2018 11:11:58 AM              Inj       :    1
                                                    Inj Volume: 0.5 µl

Acq. Method     : C:\CHEM32\2\DATA\13072018 2018-07-13 08-43-12\UNIVERSAL BMV.M
Last changed    : 7/13/2018 8:43:19 AM by SYSTEM
Analysis Method : C:\CHEM32\2\DATA\13072018 2018-07-13 08-43-12\UNIVERSAL BMV.M (Sequence
Method)
Last changed    : 7/16/2018 11:10:20 AM by SYSTEM
                  (modified after loading)
Additional Info : Peak(s) manually integrated
=====

```

Peak #	RetTime [min]	Type	Width [min]	Area [pA*s]	Height [pA]	Area %
11	26.110	VV	0.0738	4807.13232	970.16211	11.87169
12	26.289	VV	0.0803	356.48965	62.72009	0.88039
13	26.516	VV	0.0562	102.38791	28.31937	0.25286
14	26.662	VV	0.0573	652.25574	175.61530	1.61081
15	26.839	VV	0.0929	43.61334	6.28754	0.10771
16	27.062	VV	0.0609	379.66992	94.36699	0.93763
17	27.204	VV	0.0557	261.87189	73.33115	0.64672
18	27.348	VV	0.0559	1170.24646	326.16031	2.89004
19	27.531	VB	0.0657	100.45235	23.56101	0.24808
20	27.756	BB	0.0569	109.61815	29.83921	0.27071
21	27.954	BB	0.0611	123.43629	31.96610	0.30484
22	28.234	BV	0.0852	190.09067	34.02959	0.46945
23	28.509	VV	0.0885	6084.14160	1099.71069	15.02539
24	28.784	VV	0.0784	7503.94775	1319.39404	18.53174
25	28.886	VB	0.0469	233.80608	74.01234	0.57741
26	29.086	BV	0.0600	1063.42297	269.43954	2.62623
27	29.294	VV	0.0539	762.02423	222.75427	1.88189
28	29.450	VV	0.0670	56.35762	12.89867	0.13918
29	29.616	VV	0.0695	636.19299	149.82576	1.57114
30	29.812	VV	0.0851	3599.36401	626.04431	8.88899
31	29.936	VB	0.0521	1018.38959	311.75626	2.51501
32	30.309	BV	0.0717	162.71477	35.35386	0.40184
33	30.525	VV	0.0917	178.15718	28.97251	0.43998
34	30.700	VV	0.0538	83.18993	24.36719	0.20545
35	30.850	VV	0.0594	94.60545	24.29478	0.23364
36	31.020	VV	0.0558	128.83801	35.96035	0.31818
37	31.174	VB	0.0582	25.47302	6.72427	0.06291
38	31.490	BV	0.0808	61.12462	10.36256	0.15095
39	31.633	VV	0.0663	86.72312	19.35318	0.21417
40	31.836	VV	0.0504	31.38216	10.06926	0.07750
41	32.145	VV	0.0672	222.86485	50.74750	0.55039
42	32.313	VV	0.0965	221.90598	31.38086	0.54802
43	32.500	VV	0.0999	370.66519	58.47795	0.91539
44	32.655	VV	0.0614	316.85806	81.45370	0.78251
45	32.773	VV	0.0843	338.02713	63.28123	0.83479
46	32.883	VB	0.0716	568.71692	111.28223	1.40450
47	33.135	BV	0.0850	158.16983	29.29001	0.39062
48	33.311	VV	0.0623	491.29645	118.68314	1.21331
49	33.420	VV	0.0567	627.31989	171.57196	1.54923
50	33.521	VB	0.0650	1046.28381	239.17761	2.58390
51	33.925	BB	0.0563	64.36250	18.63371	0.15895

Sample Name: SANDALWOOD NT (BMV)

```
=====
Acq. Operator   : SYSTEM                               Seq. Line :    3
Acq. Instrument : BMV_NEW_GC_7820                     Location  : Vial 103
Injection Date  : 7/13/2018 11:11:58 AM              Inj       :    1
                                                    Inj Volume: 0.5 µl

Acq. Method     : C:\CHEM32\2\DATA\13072018 2018-07-13 08-43-12\UNIVERSAL BMV.M
Last changed    : 7/13/2018 8:43:19 AM by SYSTEM
Analysis Method : C:\CHEM32\2\DATA\13072018 2018-07-13 08-43-12\UNIVERSAL BMV.M (Sequence
Method)
Last changed    : 7/16/2018 11:10:20 AM by SYSTEM
                  (modified after loading)
Additional Info  : Peak(s) manually integrated
=====
```

Peak #	RetTime [min]	Type	Width [min]	Area [pA*s]	Height [pA]	Area %
52	34.205	BB	0.0750	37.18454	7.35168	0.09183
53	35.104	BB	0.0645	18.23315	4.38194	0.04503
54	35.423	BB	0.0760	672.00696	122.54729	1.65959

Totals : 4.04924e4 8492.53164

```
=====
*** End of Report ***
```