

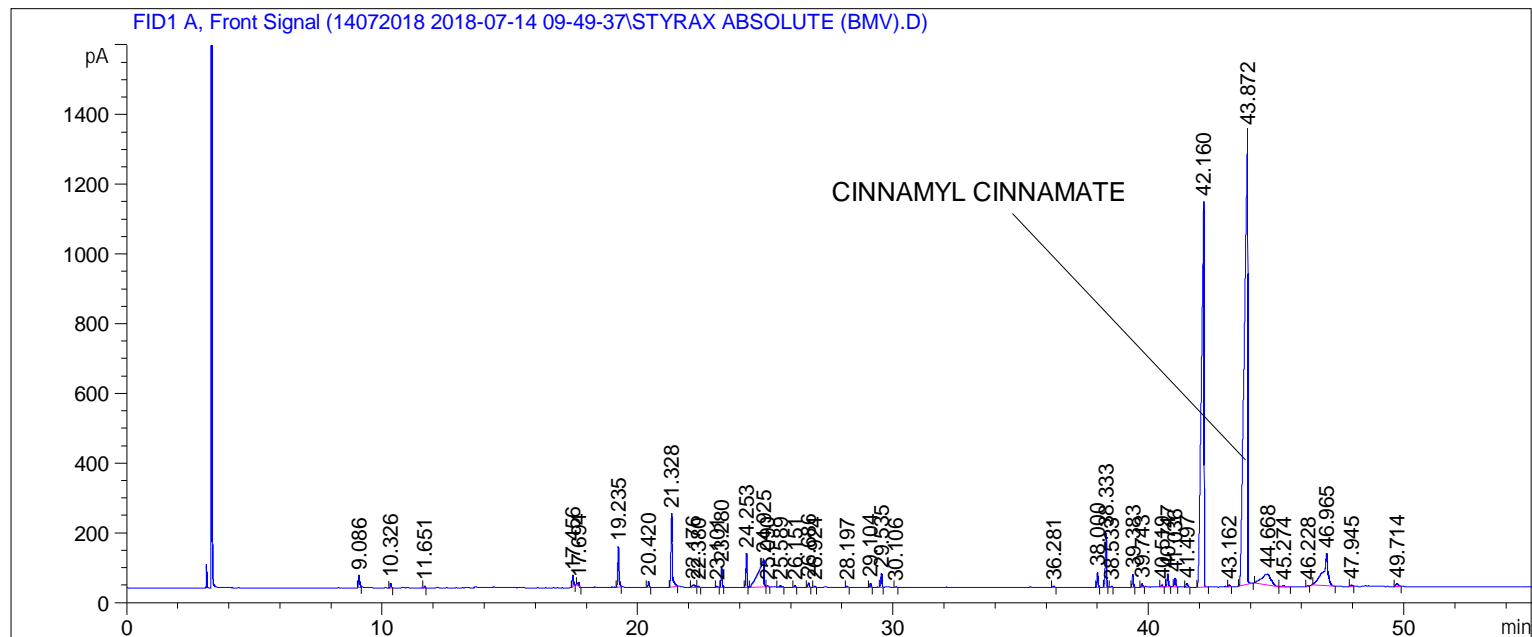
Sample Name: STYRAX ABSOLUTE (BMV)

```

=====
Acq. Operator   : SYSTEM                      Seq. Line :    5
Acq. Instrument : BMV_NEW_GC_7820             Location  : Vial 105
Injection Date  : 7/14/2018 2:33:03 PM       Inj       :    1
                                           Inj Volume: 0.5 µl

Acq. Method     : C:\CHEM32\2\DATA\14072018 2018-07-14 09-49-37\UNIVERSAL BMV.M
Last changed    : 7/14/2018 9:49:43 AM by SYSTEM
Analysis Method : C:\CHEM32\2\DATA\14072018 2018-07-14 09-49-37\UNIVERSAL BMV.M (Sequence
Method)
Last changed    : 7/16/2018 11:25:28 AM by SYSTEM
                 (modified after loading)
Additional Info  : Peak(s) manually integrated
=====

```



```

=====
                          Area Percent Report
=====

```

```

Sorted By      :      Signal
Multiplier     :      1.0000
Dilution      :      1.0000
Do not use Multiplier & Dilution Factor with ISTDs

```

Signal 1: FID1 A, Front Signal

Peak #	RetTime [min]	Type	Width [min]	Area [pA*s]	Height [pA]	Area %
1	9.086	BB	0.0472	110.93731	34.79781	0.41150
2	10.326	BB	0.0413	38.70271	14.41174	0.14356
3	11.651	BB	0.0426	11.16746	3.99977	0.04142
4	17.456	BB	0.0474	104.56450	32.63593	0.38786
5	17.694	BB	0.0429	32.77257	10.07843	0.12156
6	19.235	BB	0.0517	396.65613	116.60886	1.47131
7	20.420	BB	0.0494	52.71749	16.88309	0.19554
8	21.328	BB	0.0564	803.00458	211.13365	2.97857
9	22.176	BV	0.0985	55.69716	7.96912	0.20660
10	22.380	VB	0.0616	12.02199	2.83022	0.04459

Sample Name: STYRAX ABSOLUTE (BMV)

```

=====
Acq. Operator   : SYSTEM                               Seq. Line :    5
Acq. Instrument : BMV_NEW_GC_7820                       Location  : Vial 105
Injection Date  : 7/14/2018 2:33:03 PM                Inj       :    1
                                                    Inj Volume: 0.5 µl

Acq. Method     : C:\CHEM32\2\DATA\14072018 2018-07-14 09-49-37\UNIVERSAL BMV.M
Last changed    : 7/14/2018 9:49:43 AM by SYSTEM
Analysis Method : C:\CHEM32\2\DATA\14072018 2018-07-14 09-49-37\UNIVERSAL BMV.M (Sequence
Method)
Last changed    : 7/16/2018 11:25:28 AM by SYSTEM
                  (modified after loading)
Additional Info  : Peak(s) manually integrated
=====

```

Peak #	RetTime [min]	Type	Width [min]	Area [pA*s]	Height [pA]	Area %
11	23.101	BB	0.0485	11.45994	3.76506	0.04251
12	23.280	BB	0.0487	172.31294	54.75942	0.63916
13	24.253	BB	0.0499	309.16229	97.66890	1.14677
14	24.925	BV	0.1817	1221.98254	81.13642	4.53267
15	25.090	VB	0.0560	16.12687	4.37705	0.05982
16	25.589	BB	0.0851	27.94404	4.39846	0.10365
17	26.151	BB	0.0499	15.40091	4.74335	0.05713
18	26.686	BB	0.0540	44.30862	12.90847	0.16435
19	26.924	BB	0.0499	16.05313	4.94721	0.05955
20	28.197	BB	0.0522	12.78350	3.80476	0.04742
21	29.104	BB	0.0488	40.87969	12.60836	0.15163
22	29.535	BB	0.0487	126.85410	40.30267	0.47054
23	30.106	BB	0.0518	6.06570	1.87303	0.02250
24	36.281	BB	0.0593	16.32220	4.29521	0.06054
25	38.000	BB	0.0501	141.59650	43.37582	0.52522
26	38.333	BB	0.0514	522.86499	154.74908	1.93945
27	38.533	BB	0.0504	9.56566	2.98652	0.03548
28	39.383	BB	0.0526	129.10214	38.05259	0.47888
29	39.743	BB	0.0494	34.31952	10.69596	0.12730
30	40.519	BB	0.0527	19.83984	5.82485	0.07359
31	40.747	BB	0.0556	132.68716	37.17059	0.49217
32	41.036	BB	0.0550	89.90713	26.20849	0.33349
33	41.497	BB	0.0670	46.54391	10.65343	0.17264
34	42.160	BB	0.0913	8091.77295	1106.23657	30.01462
35	43.162	BB	0.0579	24.25005	6.29957	0.08995
36	43.872	BB	0.1150	1.19270e4	1301.02856	44.24046
37	44.668	BV	0.2967	746.27277	30.47791	2.76813
38	45.274	VB	0.0555	14.69738	3.93829	0.05452
39	46.228	BB	0.0466	6.60442	2.22961	0.02450
40	46.965	BB	0.1806	1287.48035	91.83694	4.77562
41	47.945	BB	0.0719	23.36152	4.47502	0.08665
42	49.714	BB	0.0878	55.69252	8.24923	0.20658

Totals : 2.69594e4 3667.42602

*** End of Report ***