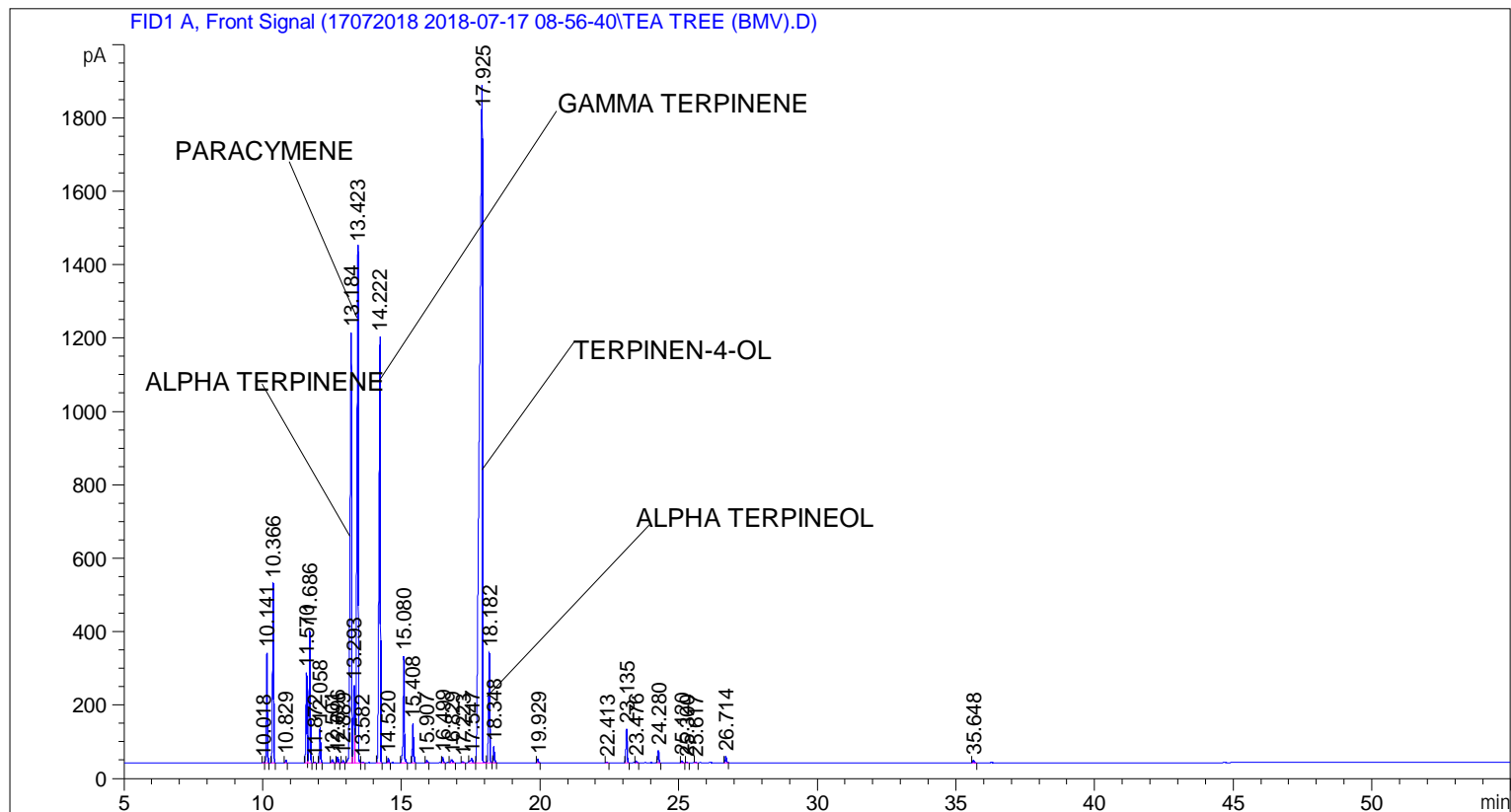


```

=====
Acq. Operator   : SYSTEM                               Seq. Line :    1
Acq. Instrument : BMV_NEW_GC_7820                     Location  : Vial 101
Injection Date  : 7/17/2018 9:08:25 AM                Inj       :    1
                                                    Inj Volume: 0.5 µl

Acq. Method     : C:\CHEM32\2\DATA\17072018 2018-07-17 08-56-40\UNIVERSAL BMV.M
Last changed    : 7/17/2018 8:56:46 AM by SYSTEM
Analysis Method : C:\CHEM32\2\DATA\17072018 2018-07-17 08-56-40\UNIVERSAL BMV.M (Sequence
Method)
Last changed    : 7/18/2018 10:58:48 AM by SYSTEM
                  (modified after loading)
Additional Info  : Peak(s) manually integrated
  
```



=====
 Area Percent Report
 =====

```

Sorted By      :      Signal
Multiplier     :      1.0000
Dilution       :      1.0000
Do not use Multiplier & Dilution Factor with ISTDs
  
```

Signal 1: FID1 A, Front Signal

Peak #	RetTime [min]	Type	Width [min]	Area [pA*s]	Height [pA]	Area %
1	10.018	BV	0.0396	5.10097	2.01384	0.01477
2	10.141	VB	0.0409	792.49231	299.36215	2.29458
3	10.366	BB	0.0421	1302.73645	489.18976	3.77194
4	10.829	BB	0.0436	23.47378	8.39127	0.06797
5	11.570	BV	0.0437	689.61163	246.23340	1.99670
6	11.686	VB	0.0424	969.46820	360.63748	2.80700

Peak #	RetTime [min]	Type	Width [min]	Area [pA*s]	Height [pA]	Area %
7	11.872	BB	0.0437	6.54114	2.33190	0.01894
8	12.058	BB	0.0427	260.88809	95.92754	0.75537
9	12.501	BB	0.0510	29.24224	8.98701	0.08467
10	12.696	BB	0.0459	46.13929	15.89534	0.13359
11	12.889	BB	0.0454	18.86379	6.58125	0.05462
12	13.184	BV	0.0645	4776.60645	1172.14172	13.83017
13	13.293	VV	0.0583	785.36823	211.61751	2.27395
14	13.423	VB	0.0502	4847.02539	1405.04480	14.03406
15	13.582	BB	0.0482	7.47582	2.28386	0.02165
16	14.222	BB	0.0515	4025.56860	1160.47852	11.65562
17	14.520	BB	0.0410	33.61074	12.66086	0.09732
18	15.080	BB	0.0452	875.80487	290.32858	2.53580
19	15.408	BB	0.0475	323.03876	106.15063	0.93533
20	15.907	BB	0.0487	21.51864	6.65629	0.06231
21	16.499	BB	0.0491	46.82376	14.70539	0.13557
22	16.829	BB	0.0637	37.44973	9.55787	0.10843
23	17.223	BB	0.0566	14.28883	4.00335	0.04137
24	17.547	BB	0.0767	66.01813	12.28905	0.19115
25	17.925	BV	0.0948	1.29441e4	1845.07764	37.47830
26	18.182	VB	0.0477	890.84131	299.76526	2.57934
27	18.348	BB	0.0450	130.03073	44.63696	0.37649
28	19.929	BB	0.0492	34.58242	10.84044	0.10013
29	22.413	BB	0.0486	7.62799	2.42836	0.02209
30	23.135	BB	0.0484	278.76575	91.91808	0.80714
31	23.476	BB	0.0499	18.64071	5.59129	0.05397
32	24.280	BB	0.0493	108.08425	34.72219	0.31295
33	25.120	BB	0.0548	21.63514	6.17982	0.06264
34	25.300	BB	0.0477	7.04766	2.37101	0.02041
35	25.617	BB	0.0478	7.24051	2.35679	0.02096
36	26.714	BB	0.0519	59.53321	17.84207	0.17237
37	35.648	BB	0.0584	24.29761	6.53873	0.07035

Totals : 3.45376e4 8313.73801

=====
*** End of Report ***