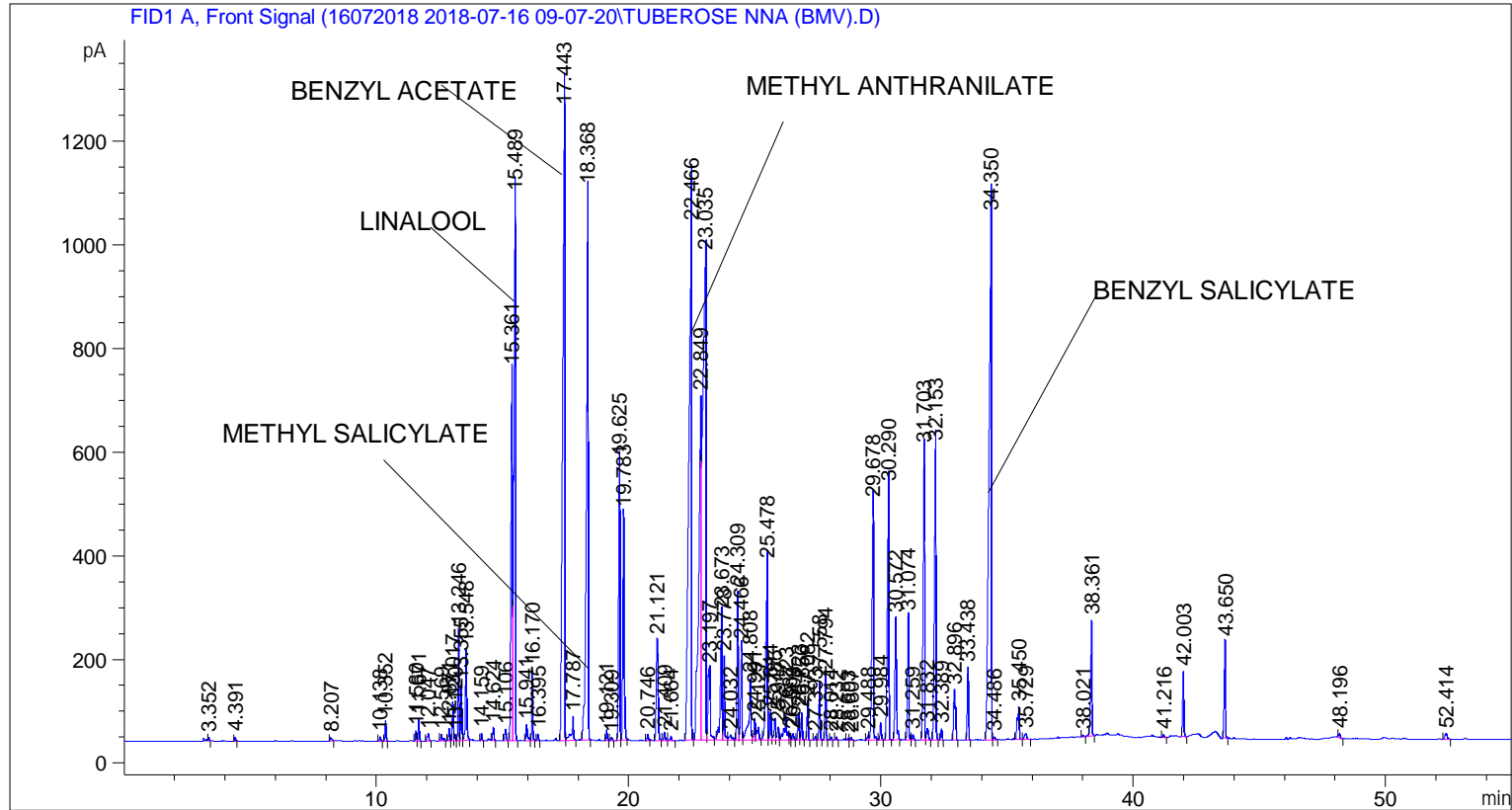


```

=====
Acq. Operator   : SYSTEM                               Seq. Line :    3
Acq. Instrument : BMV_NEW_GC_7820                     Location  : Vial 103
Injection Date  : 7/16/2018 11:34:25 AM                Inj       :    1
                                                    Inj Volume: 0.5 µl

Acq. Method     : C:\CHEM32\2\DATA\16072018 2018-07-16 09-07-20\UNIVERSAL BMV.M
Last changed    : 7/16/2018 9:07:26 AM by SYSTEM
Analysis Method : C:\CHEM32\2\DATA\16072018 2018-07-16 09-07-20\UNIVERSAL BMV.M (Sequence
Method)
Last changed    : 7/18/2018 12:15:18 PM by SYSTEM
                  (modified after loading)
  
```



=====
 Area Percent Report
 =====

```

Sorted By      :      Signal
Multiplier     :      1.0000
Dilution       :      1.0000
Do not use Multiplier & Dilution Factor with ISTDs
  
```

Signal 1: FID1 A, Front Signal

Peak #	RetTime [min]	Type	Width [min]	Area [pA*s]	Height [pA]	Area %
1	3.352	BB	0.0299	11.61641	6.18646	0.01451
2	4.391	BB	0.0354	18.46012	8.46878	0.02306
3	8.207	BB	0.0596	26.19924	6.42225	0.03273
4	10.138	BB	0.0501	25.15877	8.12105	0.03143
5	10.352	BB	0.0472	112.13332	39.40511	0.14009
6	11.560	BV	0.0451	56.00671	19.74733	0.06997
7	11.671	VB	0.0483	120.06660	40.78203	0.15000

Sample Name: TUBEROSE NNA (BMV)

Peak #	RetTime [min]	Type	Width [min]	Area [pA*s]	Height [pA]	Area %
8	12.047	BB	0.0647	59.99670	13.27447	0.07495
9	12.569	BB	0.0613	53.70002	12.70625	0.06709
10	12.871	BV	0.0470	67.84719	23.95654	0.08476
11	13.017	VV	0.0478	216.64017	74.87631	0.27065
12	13.120	VV	0.0440	33.84371	11.61611	0.04228
13	13.246	VV	0.0456	612.45654	212.82327	0.76513
14	13.355	VV	0.0456	309.53571	107.36625	0.38670
15	13.548	VB	0.0591	652.42700	176.54153	0.81507
16	14.159	BB	0.0471	41.30943	14.54052	0.05161
17	14.624	BB	0.0522	84.41904	25.76229	0.10546
18	15.106	BB	0.0628	88.37121	22.02588	0.11040
19	15.361	BV	0.0621	2827.33643	715.53687	3.53215
20	15.489	VB	0.0686	4915.63916	1049.64722	6.14104
21	15.941	BV	0.0585	123.43275	30.96848	0.15420
22	16.170	VB	0.0463	379.97009	137.27893	0.47469
23	16.395	BB	0.0491	41.01588	13.64039	0.05124
24	17.443	BV	0.0935	7455.89795	1216.45898	9.31456
25	17.787	VB	0.0772	248.14980	44.42399	0.31001
26	18.368	BB	0.0654	5048.50391	1062.60144	6.30703
27	19.121	BB	0.0490	65.10004	20.52555	0.08133
28	19.309	BB	0.0617	22.16887	5.65537	0.02770
29	19.625	BV	0.0561	1942.91980	538.71954	2.42726
30	19.783	VB	0.0556	1644.29578	440.01331	2.05420
31	20.746	BB	0.0517	37.94030	11.72701	0.04740
32	21.121	BB	0.0887	1049.73999	195.42450	1.31143
33	21.409	BB	0.0606	65.33333	16.34784	0.08162
34	21.664	BB	0.0587	29.75525	7.77033	0.03717
35	22.466	BV	0.0986	7539.72119	992.59833	9.41928
36	22.849	VV	0.0990	4608.79980	664.22504	5.75771
37	23.035	VV	0.1201	8508.92773	935.81372	10.63009
38	23.197	VB	0.0853	873.29297	139.00111	1.09099
39	23.673	BV	0.0674	1118.26306	244.45953	1.39703
40	23.778	VV	0.0540	553.25604	161.44914	0.69118
41	24.032	VB	0.1036	82.18322	10.69666	0.10267
42	24.309	BV	0.0526	951.14081	287.58005	1.18825
43	24.466	VV	0.0566	674.22821	184.77779	0.84230
44	24.808	VV	0.0772	665.88586	119.24193	0.83188
45	24.991	VV	0.0564	158.02449	43.46648	0.19742
46	25.127	VB	0.0807	143.26807	24.34426	0.17898
47	25.478	BV	0.0708	1715.59863	340.64902	2.14328
48	25.614	VV	0.0556	195.67410	54.90975	0.24445
49	25.785	VV	0.0593	165.75221	42.67168	0.20707
50	25.917	VV	0.0700	113.06216	25.38236	0.14125
51	26.223	VV	0.0973	351.02713	49.16983	0.43853
52	26.387	VV	0.0507	47.25817	14.24047	0.05904
53	26.508	VB	0.0634	49.05427	12.08504	0.06128
54	26.723	BV	0.0635	209.76224	53.74223	0.26205
55	26.856	VB	0.0521	174.93033	53.52567	0.21854
56	27.082	BB	0.0497	236.66084	77.26447	0.29566
57	27.393	BV	0.0498	22.20451	7.23998	0.02774
58	27.558	VB	0.0519	363.13193	111.69904	0.45366
59	27.794	BB	0.0481	388.64941	125.65512	0.48553
60	28.014	BB	0.0497	19.72445	6.10864	0.02464
61	28.232	BB	0.0538	20.86729	5.83117	0.02607

Sample Name: TUBEROSE NNA (BMV)

Peak #	RetTime [min]	Type	Width [min]	Area [pA*s]	Height [pA]	Area %
62	28.693	BV	0.0483	13.55117	4.60417	0.01693
63	28.807	VB	0.0571	21.02776	5.96860	0.02627
64	29.488	BV	0.0602	38.72580	9.36617	0.04838
65	29.678	VB	0.0660	2039.44019	457.44397	2.54785
66	29.984	BB	0.0592	124.15132	33.50367	0.15510
67	30.290	BB	0.0690	2216.38086	487.92096	2.76890
68	30.572	BB	0.0657	1003.08685	235.55424	1.25314
69	31.074	BB	0.0568	835.88928	238.96609	1.04427
70	31.259	BB	0.0578	36.99789	10.33497	0.04622
71	31.703	BV	0.0604	2245.31616	564.50024	2.80504
72	31.832	VB	0.0734	113.77718	23.10711	0.14214
73	32.153	BB	0.0678	2524.83252	568.15002	3.15424
74	32.389	BB	0.0511	69.55095	21.89655	0.08689
75	32.896	BB	0.0750	507.60065	97.12225	0.63414
76	33.438	BB	0.0545	488.82434	140.76996	0.61068
77	34.350	BV	0.0909	6829.11230	1009.81757	8.53152
78	34.486	VB	0.0718	25.64298	5.36473	0.03204
79	35.450	BB	0.0747	343.43304	63.89289	0.42905
80	35.729	BB	0.1053	72.14909	11.17218	0.09013
81	38.021	BB	0.0512	12.93617	4.05634	0.01616
82	38.361	BB	0.0584	808.16748	222.40656	1.00963
83	41.216	BB	0.0563	19.85006	5.74391	0.02480
84	42.003	BB	0.0572	443.93582	125.77849	0.55460
85	43.650	BB	0.0552	658.64777	186.54749	0.82284
86	48.196	BB	0.0744	42.53508	8.20972	0.05314
87	52.414	BB	0.1022	72.35929	11.07850	0.09040

Totals : 8.00457e4 1.56725e4

=====
*** End of Report ***