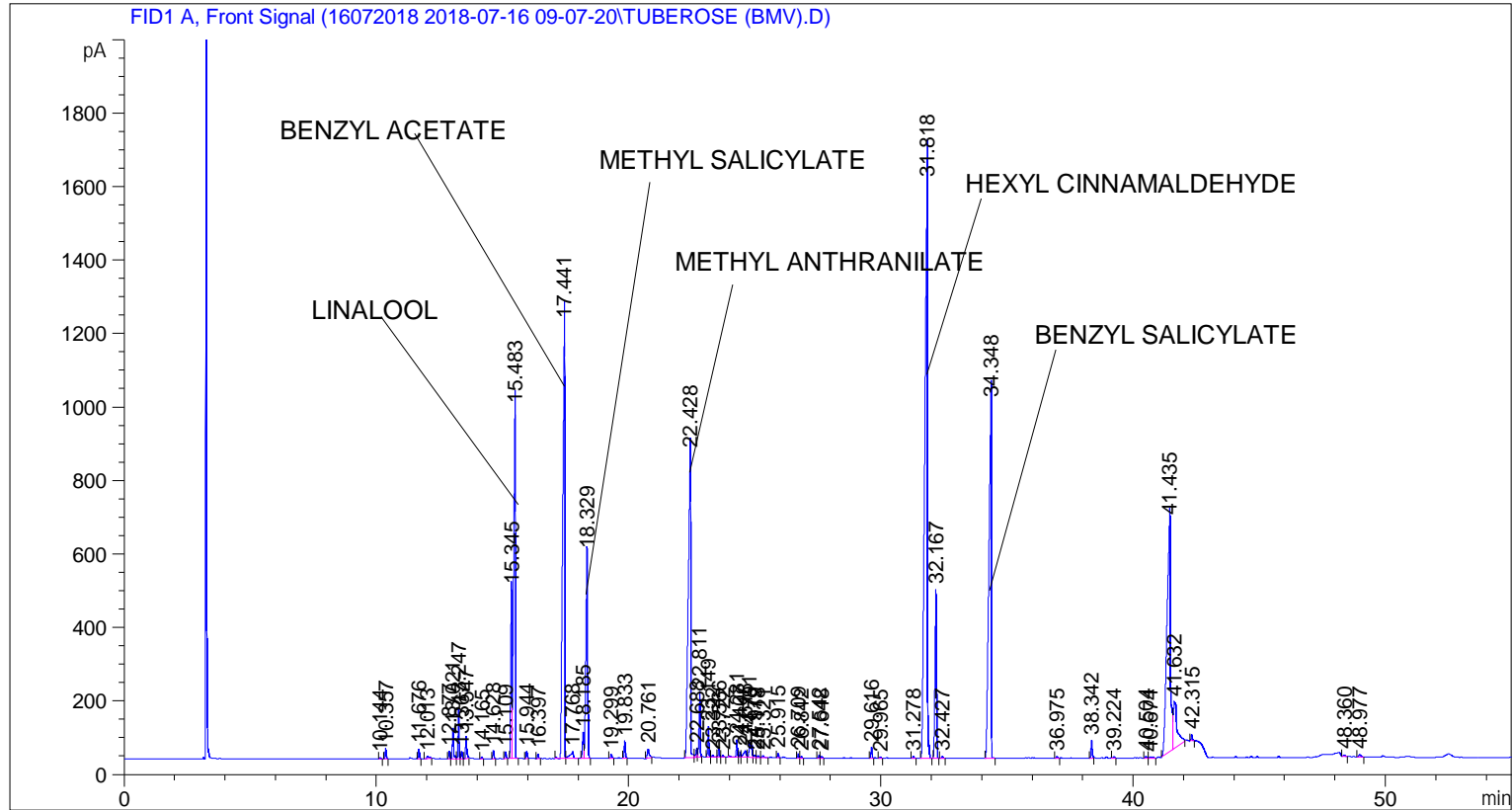


```

=====
Acq. Operator   : SYSTEM                               Seq. Line :    2
Acq. Instrument : BMV_NEW_GC_7820                     Location  : Vial 102
Injection Date  : 7/16/2018 10:26:35 AM                Inj       :    1
                                                    Inj Volume: 0.5 µl

Acq. Method     : C:\CHEM32\2\DATA\16072018 2018-07-16 09-07-20\UNIVERSAL BMV.M
Last changed    : 7/16/2018 9:07:26 AM by SYSTEM
Analysis Method : C:\CHEM32\2\DATA\16072018 2018-07-16 09-07-20\UNIVERSAL BMV.M (Sequence
Method)
Last changed    : 7/18/2018 1:40:08 PM by SYSTEM
                  (modified after loading)
Additional Info  : Peak(s) manually integrated
  
```



=====  
 Area Percent Report  
 =====

```

Sorted By       :      Signal
Multiplier      :      1.0000
Dilution        :      1.0000
Do not use Multiplier & Dilution Factor with ISTDs
  
```

Signal 1: FID1 A, Front Signal

Peak #	RetTime [min]	Type	Width [min]	Area [pA*s]	Height [pA]	Area %
1	10.144	BB	0.0447	10.45178	3.72380	0.01928
2	10.357	BB	0.0465	79.43003	28.53443	0.14649
3	11.676	BB	0.0471	75.33161	26.54106	0.13893
4	12.013	BB	0.0822	39.86992	6.62163	0.07353
5	12.877	BV	0.0463	57.20980	20.64960	0.10551
6	13.021	VV	0.0503	270.91815	82.50237	0.49965

Sample Name: TUBEROSE (BMV)

Peak #	RetTime [min]	Type	Width [min]	Area [pA*s]	Height [pA]	Area %
7	13.247	VV	0.0447	375.10333	133.82874	0.69179
8	13.367	VB	0.0477	61.96216	20.25635	0.11428
9	13.547	BB	0.0526	207.40140	59.52618	0.38250
10	14.165	BB	0.0446	13.42591	4.80905	0.02476
11	14.628	BB	0.0510	68.93935	21.76170	0.12714
12	15.109	BB	0.0521	57.24288	17.53818	0.10557
13	15.345	BV	0.0541	1581.91248	460.59006	2.91748
14	15.483	VB	0.0785	4611.65625	952.53900	8.50515
15	15.944	BB	0.0531	66.63467	19.89890	0.12289
16	16.397	BB	0.0507	39.36357	12.49739	0.07260
17	17.441	BV	0.0869	6985.82520	1183.11853	12.88376
18	17.768	VB	0.1152	170.45752	19.27190	0.31437
19	18.185	BV	0.0555	249.72359	70.18298	0.46056
20	18.329	VB	0.0674	2639.86963	555.86243	4.86864
21	19.299	BB	0.0640	46.46833	11.29114	0.08570
22	19.833	BB	0.0504	155.04799	47.09927	0.28595
23	20.761	BB	0.0761	131.49954	25.52649	0.24252
24	22.428	BB	0.0886	5438.56494	828.25323	10.03019
25	22.688	BV	0.0565	91.82147	24.08818	0.16934
26	22.811	VB	0.0561	621.05499	172.06335	1.14539
27	23.149	BB	0.0525	274.83765	83.20052	0.50688
28	23.322	BB	0.0658	25.69658	5.78276	0.04739
29	23.566	BV	0.0487	76.86329	24.45291	0.14176
30	23.722	VB	0.0527	16.64228	5.02137	0.03069
31	24.281	BV	0.0548	164.13116	46.90891	0.30270
32	24.407	VV	0.0482	46.64771	15.05277	0.08603
33	24.616	VV	0.1059	129.54599	16.81115	0.23892
34	24.791	VV	0.0909	271.61734	40.15421	0.50094
35	24.979	VV	0.0659	26.79667	6.02553	0.04942
36	25.118	VV	0.0548	19.44348	5.29650	0.03586
37	25.321	VB	0.0563	16.06000	4.65299	0.02962
38	25.915	BB	0.0495	36.66655	12.04813	0.06762
39	26.709	BV	0.0505	34.00659	10.88291	0.06272
40	26.842	VB	0.0507	15.25132	4.59357	0.02813
41	27.542	BV	0.0496	24.39582	7.99825	0.04499
42	27.648	VB	0.0586	18.53494	4.85026	0.03418
43	29.616	BB	0.0499	89.93062	29.18937	0.16586
44	29.965	BB	0.0504	12.96692	3.93525	0.02391
45	31.278	BB	0.0590	21.28111	5.77089	0.03925
46	31.818	BB	0.1017	1.20522e4	1567.68909	22.22754
47	32.167	BB	0.0645	1915.73340	460.36453	3.53313
48	32.427	BB	0.0647	23.15130	5.54706	0.04270
49	34.348	BB	0.1085	6669.47705	966.64777	12.30033
50	36.975	BB	0.0605	19.54616	5.12664	0.03605
51	38.342	BB	0.0552	167.30991	47.35997	0.30856
52	39.224	BB	0.0565	14.24942	3.91000	0.02628
53	40.504	BV	0.0688	19.89129	4.56559	0.03668
54	40.674	VB	0.1124	28.75380	3.48003	0.05303
55	41.435	BV	0.1301	6367.01953	629.04639	11.74251
56	41.632	VB	0.1375	1362.36316	126.64715	2.51257
57	42.315	BB	0.0507	57.13306	18.16732	0.10537
58	48.360	BB	0.0682	18.31343	4.25662	0.03377
59	48.977	BB	0.0938	38.30289	6.22034	0.07064

Sample Name: TUBEROSE (BMV)

Totals : 5.42220e4 8990.23265

=====

\*\*\* End of Report \*\*\*