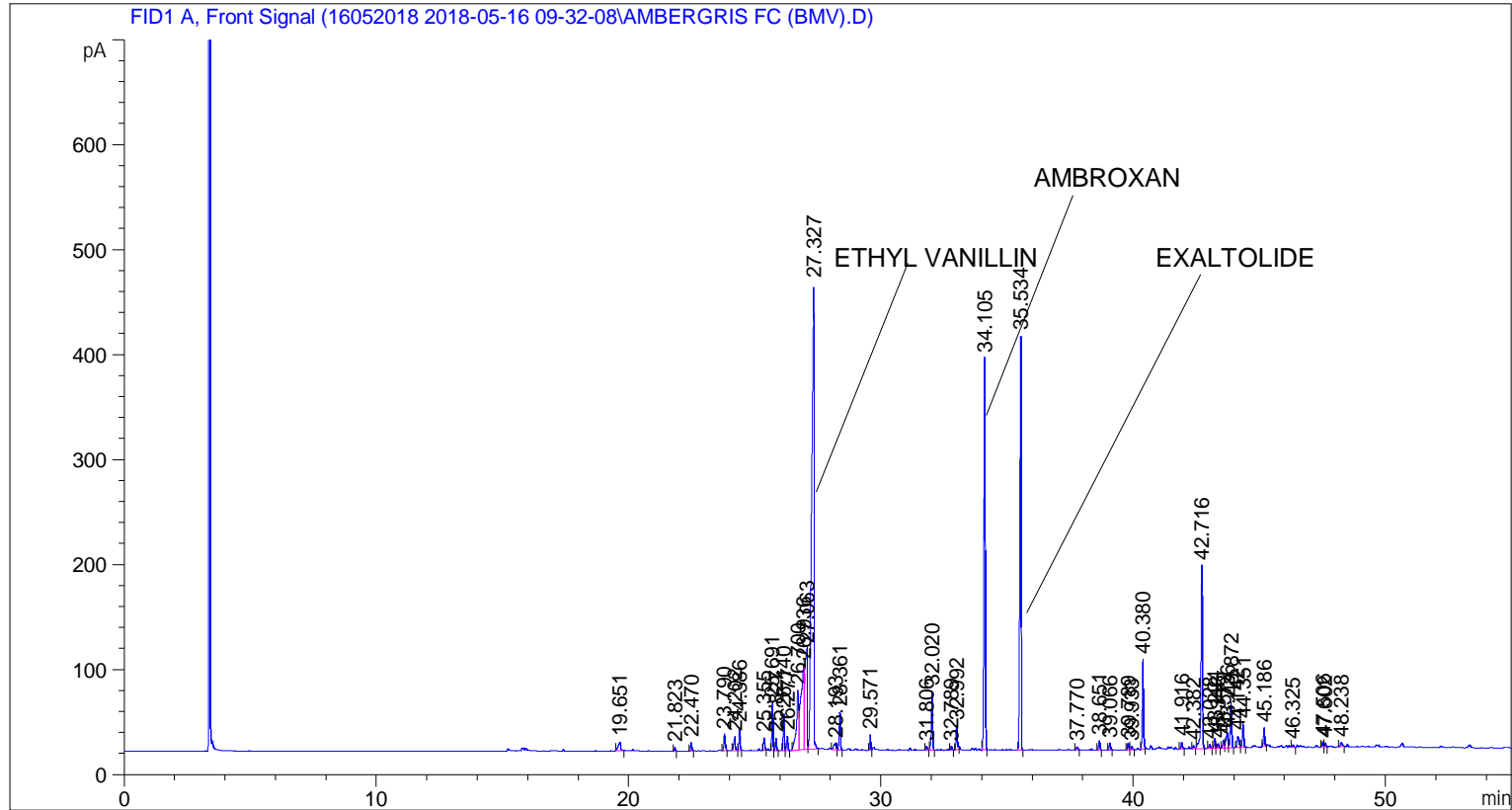


```

=====
Acq. Operator   : SYSTEM                      Seq. Line :    5
Acq. Instrument : BMV_NEW_GC_7820            Location  : Vial 105
Injection Date  : 5/16/2018 2:38:40 PM      Inj       :    1
                                           Inj Volume: 0.5 µl

Acq. Method     : C:\CHEM32\2\DATA\16052018 2018-05-16 09-32-08\UNIVERSAL F.M
Last changed    : 5/16/2018 9:32:13 AM by SYSTEM
Analysis Method : C:\CHEM32\2\DATA\16052018 2018-05-16 09-32-08\UNIVERSAL F.M (Sequence
Method)
Last changed    : 5/29/2018 3:22:15 PM by SYSTEM
                 (modified after loading)

Additional Info  : Peak(s) manually integrated
  
```



=====
 Area Percent Report
 =====

```

Sorted By      :      Signal
Multiplier     :      1.0000
Dilution       :      1.0000
Do not use Multiplier & Dilution Factor with ISTDs
  
```

Signal 1: FID1 A, Front Signal

Peak #	RetTime [min]	Type	Width [min]	Area [pA*s]	Height [pA]	Area %
1	19.651	BB	0.0912	58.83467	8.45810	0.56698
2	21.823	BB	0.0467	9.94065	3.33976	0.09580
3	22.470	BB	0.0505	26.46941	8.02838	0.25508
4	23.790	BB	0.0615	62.39013	16.01424	0.60124
5	24.202	BB	0.0631	54.87095	13.02975	0.52878
6	24.386	BB	0.0487	67.03766	21.31697	0.64603

Sample Name: AMBERGRIS FC (BMV)

Peak #	RetTime [min]	Type	Width [min]	Area [pA*s]	Height [pA]	Area %
7	25.355	BB	0.0545	43.68942	11.98876	0.42103
8	25.691	BV	0.0467	133.69098	44.98547	1.28836
9	25.827	VB	0.0488	36.86947	11.69431	0.35531
10	26.140	BV	0.0490	110.34779	34.78027	1.06340
11	26.277	VB	0.0601	52.45299	13.87838	0.50548
12	26.700	BV	0.0889	362.21497	56.44984	3.49061
13	26.936	VV	0.1213	743.69946	80.89954	7.16691
14	27.063	VV	0.0900	641.52667	95.95912	6.18229
15	27.327	VB	0.0852	2859.01147	443.73260	27.55184
16	28.193	BV	0.0838	40.86140	6.45807	0.39377
17	28.361	VB	0.0510	120.36703	36.00920	1.15996
18	29.571	BV	0.0501	45.60423	14.71933	0.43948
19	31.806	BB	0.0589	14.74937	3.83032	0.14214
20	32.020	BB	0.0537	199.34021	55.81364	1.92101
21	32.789	BB	0.0551	13.71875	3.89848	0.13221
22	32.992	BB	0.0586	88.87234	23.25809	0.85645
23	34.105	BB	0.0592	1380.24146	373.02719	13.30117
24	35.534	BB	0.0560	1421.45959	394.49670	13.69838
25	37.770	BB	0.0663	13.97867	3.24481	0.13471
26	38.651	BB	0.0551	31.76104	9.00806	0.30608
27	39.066	BB	0.0569	22.61735	6.45007	0.21796
28	39.789	BB	0.0552	22.49507	6.36231	0.21678
29	39.933	BB	0.0577	12.19628	3.25738	0.11753
30	40.380	BB	0.0544	295.77341	85.33543	2.85032
31	41.916	BB	0.0537	21.98450	6.45284	0.21186
32	42.382	BB	0.0616	12.76114	3.12984	0.12298
33	42.716	BB	0.0650	734.17639	174.68906	7.07514
34	43.028	BB	0.0598	15.02342	3.82950	0.14478
35	43.224	BV	0.0572	35.65470	9.61839	0.34360
36	43.346	VB	0.0667	19.91317	4.58033	0.19190
37	43.572	BV	0.0691	34.34786	7.84302	0.33100
38	43.726	VV	0.0811	86.63363	14.62191	0.83487
39	43.872	VB	0.0577	165.22273	44.13414	1.59222
40	44.142	BV	0.0884	59.82139	10.84408	0.57649
41	44.351	VB	0.0615	87.92346	22.54394	0.84730
42	45.186	BB	0.0535	57.50245	16.98669	0.55414
43	46.325	BB	0.0494	6.60716	2.30864	0.06367
44	47.506	BV	0.0549	18.04952	5.14295	0.17394
45	47.602	VB	0.0585	14.14320	3.70813	0.13630
46	48.238	BB	0.0761	19.99827	3.88410	0.19272

Totals : 1.03768e4 2224.04214

*** End of Report ***