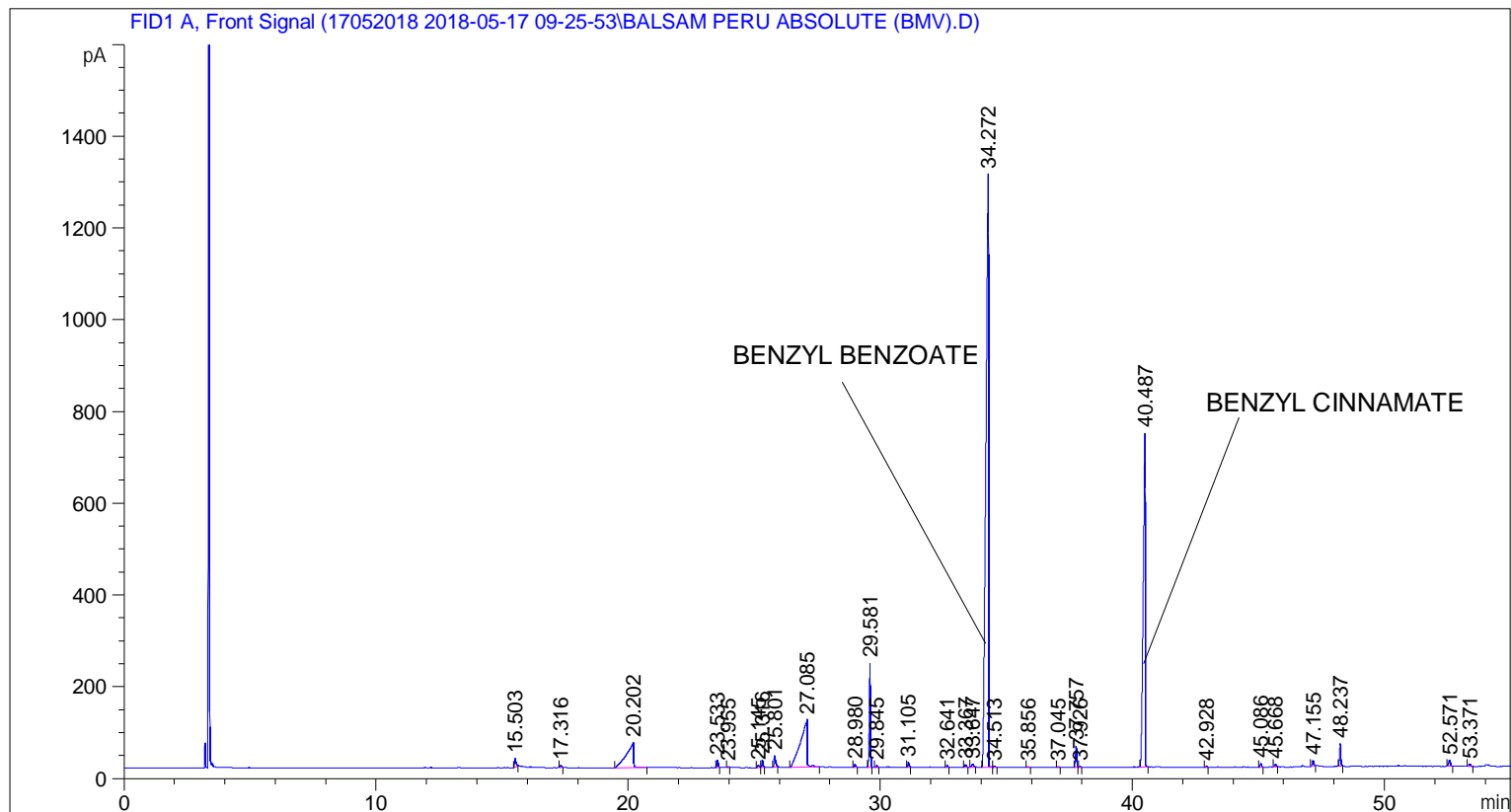


```
=====
Acq. Operator   : SYSTEM                               Seq. Line :    6
Acq. Instrument : BMV_NEW_GC_7820                     Location  : Vial 106
Injection Date  : 5/17/2018 3:56:51 PM                Inj       :    1
                                                    Inj Volume: 0.5 µl

Acq. Method    : C:\CHEM32\2\DATA\17052018 2018-05-17 09-25-53\UNIVERSAL F.M
Last changed   : 5/17/2018 9:25:59 AM by SYSTEM
Analysis Method : C:\CHEM32\2\DATA\17052018 2018-05-17 09-25-53\UNIVERSAL F.M (Sequence
Method)
Last changed   : 5/29/2018 11:43:57 AM by SYSTEM
                (modified after loading)

Additional Info : Peak(s) manually integrated
=====
```



=====
 Area Percent Report
 =====

```
Sorted By      :      Signal
Multiplier     :      1.0000
Dilution       :      1.0000
Do not use Multiplier & Dilution Factor with ISTDs
```

Signal 1: FID1 A, Front Signal

Peak #	RetTime [min]	Type	Width [min]	Area [pA*s]	Height [pA]	Area %
1	15.503	BB	0.0619	79.16761	18.50640	0.43935
2	17.316	BB	0.0501	15.73081	4.82248	0.08730
3	20.202	BB	0.2443	1103.10986	54.22404	6.12183
4	23.533	BB	0.0491	50.13492	15.74539	0.27823
5	23.955	BB	0.0505	8.37888	2.47214	0.04650
6	25.145	BB	0.0708	24.94297	5.12478	0.13842

Peak #	RetTime [min]	Type	Width [min]	Area [pA*s]	Height [pA]	Area %
7	25.316	BB	0.0484	55.57952	17.34877	0.30844
8	25.801	BB	0.0636	113.87129	25.74494	0.63194
9	27.085	BB	0.2253	1952.88879	103.43934	10.83777
10	28.980	BB	0.0550	26.61446	7.06005	0.14770
11	29.581	BB	0.0504	728.63708	227.05544	4.04365
12	29.845	BB	0.0508	14.56221	4.26844	0.08081
13	31.105	BB	0.0566	41.37632	11.08019	0.22962
14	32.641	BB	0.0510	15.30759	4.58173	0.08495
15	33.367	BB	0.0647	25.08112	5.65709	0.13919
16	33.647	BB	0.0819	37.35067	6.23082	0.20728
17	34.272	BB	0.0909	9186.01367	1293.16882	50.97879
18	34.513	BB	0.0603	12.87939	3.24437	0.07148
19	35.856	BB	0.0583	8.55406	2.30297	0.04747
20	37.045	BB	0.0516	6.53999	1.97876	0.03629
21	37.757	BB	0.0511	150.56978	46.11369	0.83560
22	37.926	BB	0.0440	7.59626	2.60317	0.04216
23	40.487	BB	0.0716	3974.30444	728.73486	22.05584
24	42.928	BB	0.0526	8.51396	2.50581	0.04725
25	45.086	BB	0.0552	27.76343	7.67850	0.15408
26	45.668	BB	0.0602	25.31744	6.39713	0.14050
27	47.155	BB	0.0585	44.69796	11.98792	0.24806
28	48.237	BB	0.0571	183.44670	49.65339	1.01806
29	52.571	BB	0.0694	66.05360	13.19336	0.36657
30	53.371	BB	0.0858	24.29964	4.37558	0.13485

Totals : 1.80193e4 2687.30037

=====
*** End of Report ***