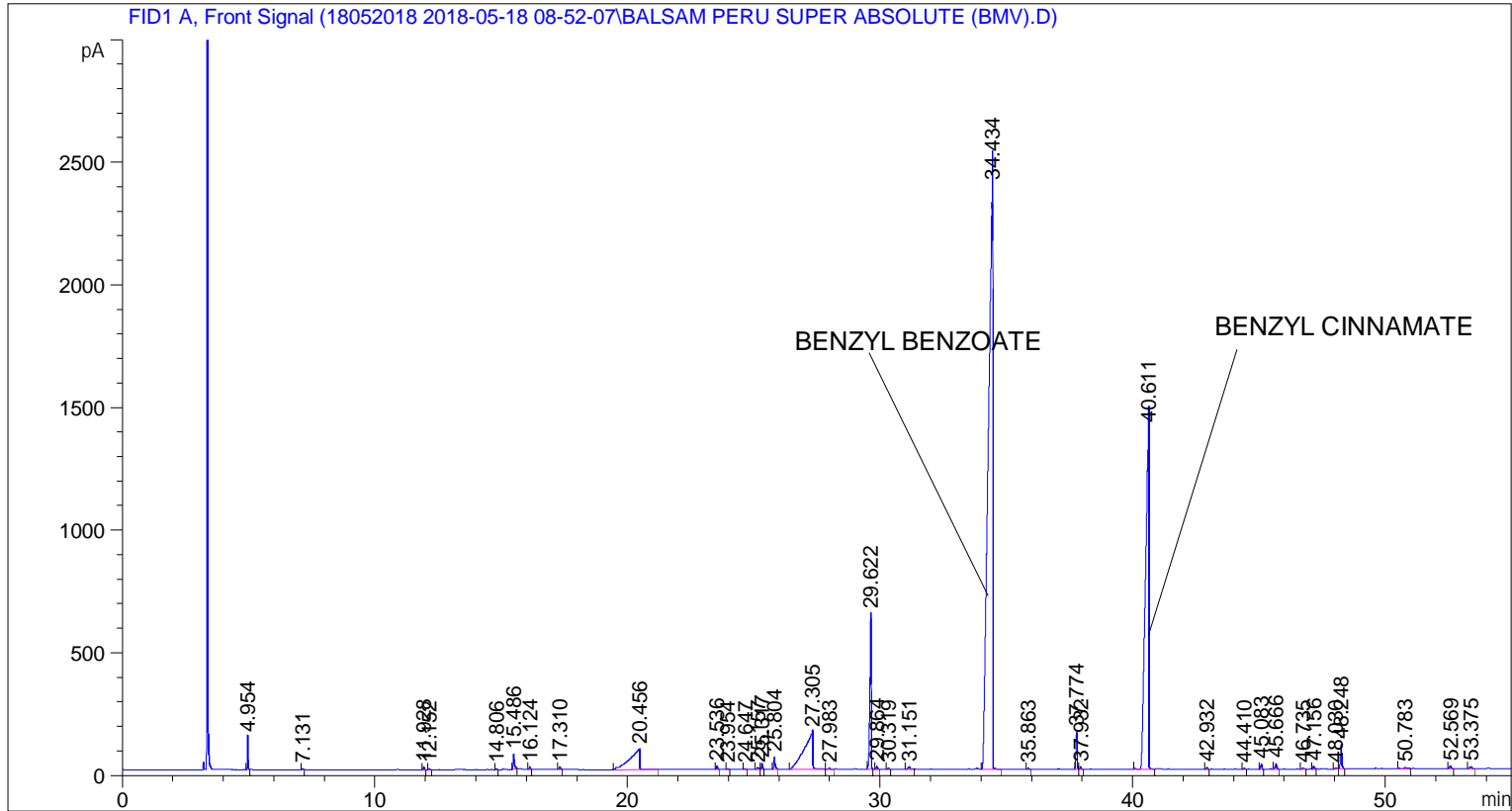


```
=====
Acq. Operator   : SYSTEM                               Seq. Line :    3
Acq. Instrument : BMV_NEW_GC_7820                     Location  : Vial 103
Injection Date  : 5/18/2018 11:42:52 AM                Inj       :    1
                                                    Inj Volume: 0.5 µl

Acq. Method     : C:\CHEM32\2\DATA\18052018 2018-05-18 08-52-07\UNIVERSAL F.M
Last changed    : 5/18/2018 8:52:12 AM by SYSTEM
Analysis Method : C:\CHEM32\2\DATA\18052018 2018-05-18 08-52-07\UNIVERSAL F.M (Sequence
Method)
Last changed    : 5/28/2018 2:41:27 PM by SYSTEM
                (modified after loading)

Additional Info  : Peak(s) manually integrated
=====
```



=====
 Area Percent Report
 =====

```
Sorted By       : Signal
Multiplier      : 1.0000
Dilution       : 1.0000
Do not use Multiplier & Dilution Factor with ISTDs
```

Signal 1: FID1 A, Front Signal

Peak #	RetTime [min]	Type	Width [min]	Area [pA*s]	Height [pA]	Area %
1	4.954	BB	0.0369	278.68539	130.51416	0.51594
2	7.131	BB	0.0450	11.28631	3.99120	0.02089
3	11.928	BB	0.0462	35.83421	12.23926	0.06634
4	12.152	BB	0.0456	11.80684	4.09806	0.02186
5	14.806	BB	0.0461	15.52480	5.30753	0.02874
6	15.486	BB	0.0562	229.37292	63.34367	0.42465

Peak #	RetTime [min]	Type	Width [min]	Area [pA*s]	Height [pA]	Area %
7	16.124	BB	0.0462	28.06587	10.15429	0.05196
8	17.310	BB	0.0553	35.04725	9.90225	0.06488
9	20.456	BB	0.3398	2290.05127	83.01615	4.23964
10	23.536	BB	0.0514	45.13690	14.09053	0.08356
11	23.954	BB	0.0538	15.51681	4.33490	0.02873
12	24.647	BB	0.0466	12.90020	4.35534	0.02388
13	25.157	BV	0.0795	37.72650	7.39780	0.06984
14	25.317	VB	0.0518	82.02553	25.29955	0.15186
15	25.804	BB	0.0621	202.61333	49.11343	0.37510
16	27.305	BV	0.3231	3726.15820	150.35692	6.89835
17	27.983	VB	0.0580	17.09700	4.33476	0.03165
18	29.622	BB	0.0591	2442.16577	632.04010	4.52126
19	29.864	BB	0.0521	39.99100	12.25328	0.07404
20	30.319	BB	0.0629	18.20800	4.52572	0.03371
21	31.151	BB	0.1163	71.55683	9.67460	0.13248
22	34.434	BB	0.1560	2.97815e4	2380.35864	55.13546
23	35.863	BB	0.0596	18.70162	5.00411	0.03462
24	37.774	BV	0.0547	506.12076	152.60866	0.93700
25	37.932	VB	0.0545	32.82539	9.45269	0.06077
26	40.611	BB	0.1206	1.31903e4	1391.43042	24.41962
27	42.932	BB	0.0548	22.98969	6.58135	0.04256
28	44.410	BB	0.0556	17.33442	4.85861	0.03209
29	45.083	BB	0.0550	74.00764	21.04199	0.13701
30	45.666	BB	0.0640	94.39817	22.93166	0.17476
31	46.735	BB	0.0809	24.05491	4.60906	0.04453
32	47.156	BB	0.0601	41.98479	11.10430	0.07773
33	48.030	BV	0.0679	21.89400	4.91893	0.04053
34	48.248	VB	0.0608	387.02606	100.75331	0.71651
35	50.783	BB	0.1358	47.32038	5.12191	0.08761
36	52.569	BB	0.0767	51.29071	10.54950	0.09496
37	53.375	BB	0.0865	56.64053	10.24630	0.10486

Totals : 5.40152e4 5381.91493

=====
*** End of Report ***