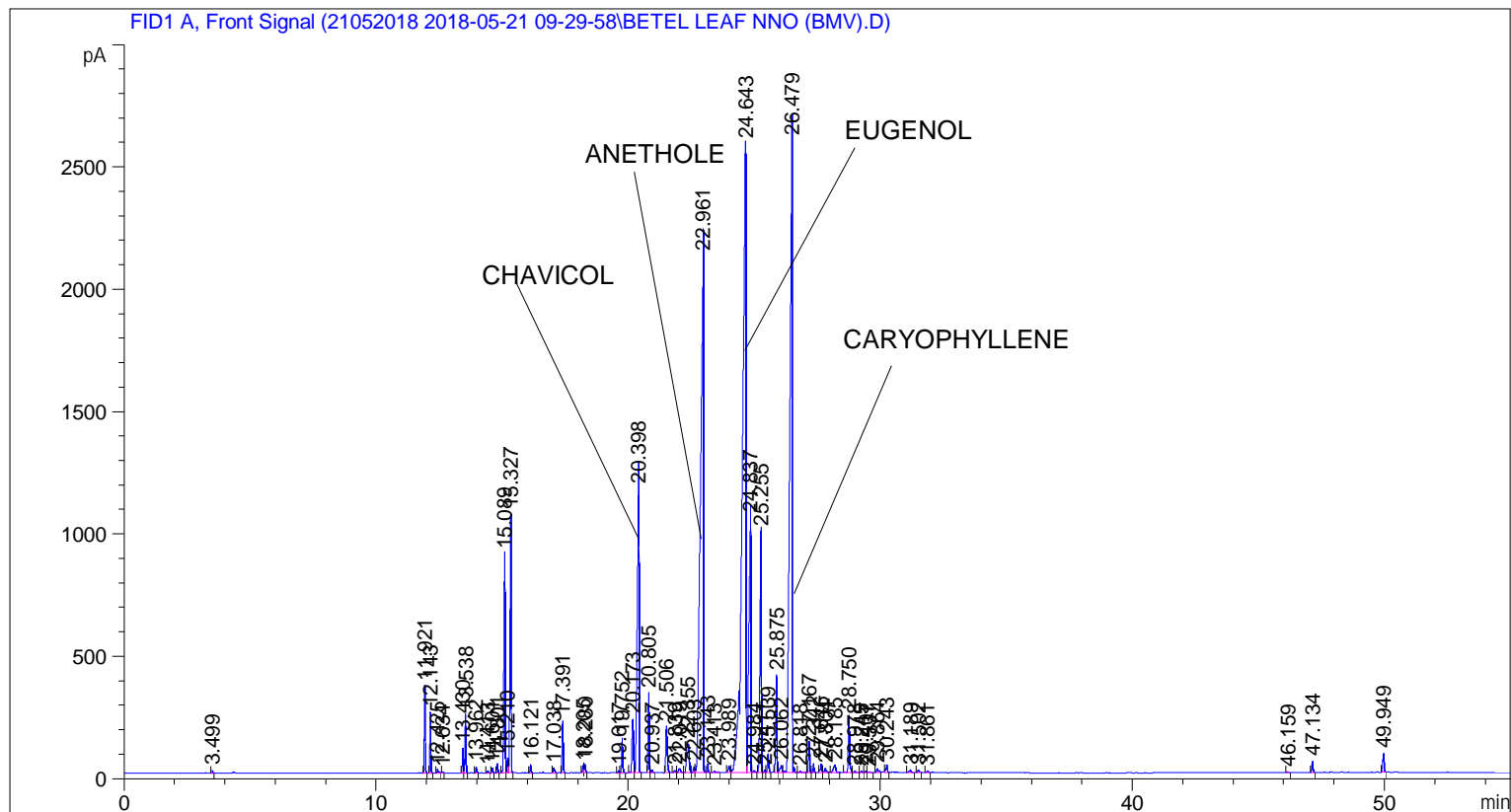


```

=====
Acq. Operator   : SYSTEM                               Seq. Line :    3
Acq. Instrument : BMV_NEW_GC_7820                     Location  : Vial 103
Injection Date  : 5/21/2018 12:18:00 PM                Inj       :    1
                                                    Inj Volume: 0.5 µl

Acq. Method     : C:\CHEM32\2\DATA\21052018 2018-05-21 09-29-58\UNIVERSAL F.M
Last changed    : 5/21/2018 9:30:04 AM by SYSTEM
Analysis Method : C:\CHEM32\2\DATA\21052018 2018-05-21 09-29-58\UNIVERSAL F.M (Sequence
Method)
Last changed    : 5/28/2018 3:17:29 PM by SYSTEM
                  (modified after loading)
  
```



=====  
 Area Percent Report  
 =====

```

Sorted By       :      Signal
Multiplier      :      1.0000
Dilution       :      1.0000
Do not use Multiplier & Dilution Factor with ISTDs
  
```

Signal 1: FID1 A, Front Signal

Peak #	RetTime [min]	Type	Width [min]	Area [pA*s]	Height [pA]	Area %
1	3.499	BB	0.0336	17.48918	8.64520	0.01788
2	11.921	BB	0.0438	970.25159	355.67068	0.99213
3	12.143	BB	0.0458	676.67914	248.12976	0.69194
4	12.425	BB	0.0561	49.57115	13.74150	0.05069
5	12.634	BB	0.0441	13.45058	4.60851	0.01375
6	13.430	BV	0.0467	286.79529	102.32468	0.29326
7	13.538	VB	0.0469	671.71118	238.42543	0.68686

Sample Name: BETEL LEAF NNO (BMV)

Peak #	RetTime [min]	Type	Width [min]	Area [pA*s]	Height [pA]	Area %
8	13.962	BB	0.0492	72.07756	23.91881	0.07370
9	14.413	BB	0.0449	23.65674	8.37804	0.02419
10	14.601	BB	0.0457	57.12093	19.76219	0.05841
11	14.801	BB	0.0458	109.35445	37.71846	0.11182
12	15.089	BV	0.0575	3172.05688	892.16974	3.24357
13	15.210	VV	0.0523	201.72083	61.42570	0.20627
14	15.327	VB	0.0513	3382.94263	1057.18604	3.45921
15	16.121	BB	0.0444	93.21306	33.56662	0.09531
16	17.038	BB	0.0563	76.76846	20.21364	0.07850
17	17.391	BB	0.0487	622.68079	209.48137	0.63672
18	18.205	BV	0.0513	92.76184	27.54082	0.09485
19	18.280	VB	0.0477	102.43142	33.45574	0.10474
20	19.617	BV	0.0516	26.42218	8.20409	0.02702
21	19.752	VB	0.0497	435.04221	142.05258	0.44485
22	20.173	BV	0.0713	955.82190	217.24950	0.97737
23	20.398	VB	0.0720	5766.22607	1160.11499	5.89623
24	20.805	BV	0.0488	960.89362	321.95959	0.98256
25	20.937	VB	0.0511	38.42325	12.07699	0.03929
26	21.506	BB	0.0603	756.84625	190.58244	0.77391
27	21.839	BV	0.0785	47.90701	9.55443	0.04899
28	22.019	VB	0.1002	98.08131	15.83859	0.10029
29	22.355	BV	0.1263	882.63104	116.64304	0.90253
30	22.603	VV	0.0654	103.42611	24.41163	0.10576
31	22.961	VV	0.1125	1.82001e4	2112.97437	18.61039
32	23.143	VB	0.0495	109.64622	36.02217	0.11212
33	23.413	BB	0.0817	42.38229	7.09229	0.04334
34	23.989	BV	0.0759	130.34793	26.27948	0.13329
35	24.643	VV	0.1377	2.63553e4	2568.68188	26.94948
36	24.837	VV	0.0785	5753.34473	1040.80603	5.88306
37	24.984	VB	0.0813	50.91922	9.37865	0.05207
38	25.255	BV	0.0648	3956.96606	986.94330	4.04618
39	25.411	VV	0.0568	39.24847	10.70196	0.04013
40	25.539	VB	0.0574	284.56464	76.42084	0.29098
41	25.875	BV	0.0542	1373.44739	398.64249	1.40441
42	26.062	VV	0.0832	164.46312	28.53985	0.16817
43	26.479	VB	0.0943	1.77837e4	2583.03198	18.18460
44	26.818	BB	0.1080	48.73933	6.04776	0.04984
45	27.167	BV	0.0536	408.60068	126.94500	0.41781
46	27.342	VB	0.0506	112.43243	35.80041	0.11497
47	27.646	BV	0.0604	147.42047	35.55807	0.15074
48	27.804	VB	0.0735	95.82534	18.79804	0.09799
49	28.185	BB	0.1127	224.08977	30.87013	0.22914
50	28.750	BB	0.0570	866.99713	235.50179	0.88654
51	28.978	BB	0.0634	27.53467	6.49966	0.02816
52	29.245	BV	0.0624	20.52841	4.95304	0.02099
53	29.407	VV	0.0560	26.96601	7.49515	0.02757
54	29.531	VB	0.0871	25.74447	4.47821	0.02632
55	29.864	BB	0.0831	91.65058	15.94403	0.09372
56	30.243	BB	0.0599	121.54085	30.87084	0.12428
57	31.189	BB	0.0726	47.31980	9.11091	0.04839
58	31.502	BB	0.0722	46.01448	9.54526	0.04705
59	31.861	BB	0.0667	22.56973	5.19861	0.02308
60	46.159	BB	0.0561	14.01074	4.07522	0.01433
61	47.134	BB	0.0555	154.83707	45.71018	0.15833

Sample Name: BETEL LEAF NNO (BMV)

Peak #	RetTime [min]	Type	Width [min]	Area [pA*s]	Height [pA]	Area %
62	49.949	BB	0.0604	283.53357	74.51295	0.28993

Totals : 9.77951e4 1.62085e4

=====  
\*\*\* End of Report \*\*\*