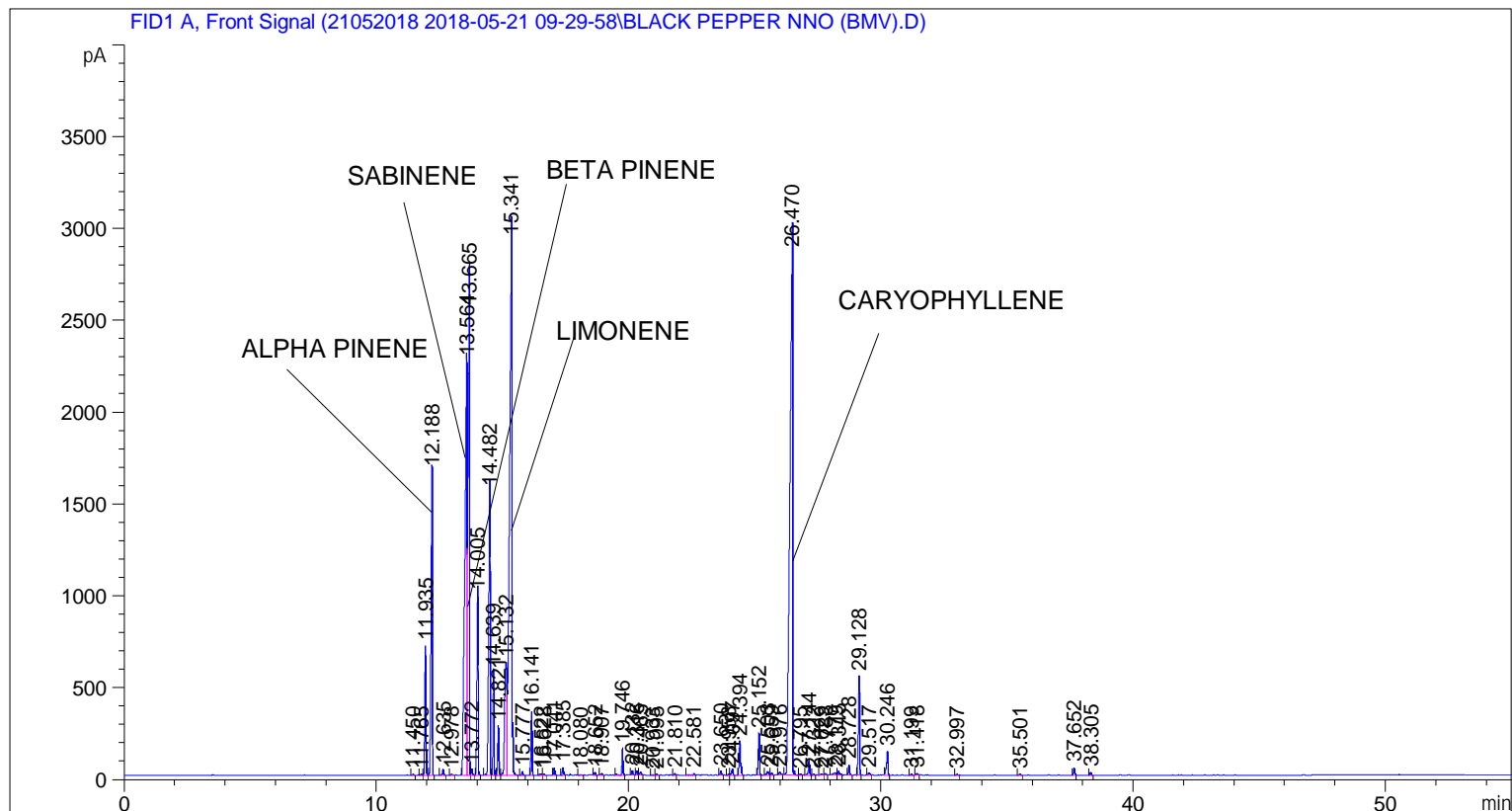


```

=====
Acq. Operator   : SYSTEM                               Seq. Line :    4
Acq. Instrument : BMV_NEW_GC_7820                     Location  : Vial 104
Injection Date  : 5/21/2018 1:30:23 PM                 Inj       :    1
                                                    Inj Volume: 0.5 µl

Acq. Method    : C:\CHEM32\2\DATA\21052018 2018-05-21 09-29-58\UNIVERSAL F.M
Last changed   : 5/21/2018 9:30:04 AM by SYSTEM
Analysis Method: C:\CHEM32\2\DATA\21052018 2018-05-21 09-29-58\UNIVERSAL F.M (Sequence
Method)
Last changed   : 5/28/2018 3:10:21 PM by SYSTEM
                (modified after loading)
  
```



=====
 Area Percent Report
 =====

```

Sorted By       : Signal
Multiplier      : 1.0000
Dilution        : 1.0000
Do not use Multiplier & Dilution Factor with ISTDs
  
```

Signal 1: FID1 A, Front Signal

Peak #	RetTime [min]	Type	Width [min]	Area [pA*s]	Height [pA]	Area %
1	11.450	BB	0.0445	15.52234	5.93265	0.01575
2	11.765	BV	0.0456	16.28530	5.65495	0.01652
3	11.935	VB	0.0548	2343.82422	703.93787	2.37764
4	12.188	BB	0.0581	5963.13135	1651.90527	6.04915
5	12.635	BB	0.0538	119.14919	34.96133	0.12087
6	12.978	BB	0.0612	18.11431	4.67483	0.01838
7	13.564	BV	0.0907	1.48027e4	2250.31226	15.01626

Sample Name: BLACK PEPPER NNO (BMV)

Peak #	RetTime [min]	Type	Width [min]	Area [pA*s]	Height [pA]	Area %
8	13.665	VV	0.0605	1.05136e4	2527.97437	10.66523
9	13.772	VB	0.0451	96.19606	33.91696	0.09758
10	14.005	BB	0.0537	3343.05884	981.21051	3.39129
11	14.482	BV	0.0643	6394.50684	1544.55469	6.48675
12	14.639	VB	0.0441	1548.49500	562.09564	1.57083
13	14.821	BV	0.0492	815.94501	270.45496	0.82772
14	15.132	VV	0.1104	4230.16406	613.64624	4.29119
15	15.341	VB	0.0881	1.89862e4	2912.16895	19.26012
16	15.777	BB	0.0465	55.95275	20.10425	0.05676
17	16.141	BB	0.0443	959.11029	346.45657	0.97295
18	16.522	BV	0.0680	37.19840	7.74574	0.03774
19	16.628	VB	0.0520	21.06584	6.13693	0.02137
20	17.041	BB	0.0457	116.62808	40.39722	0.11831
21	17.385	BB	0.0519	135.32256	41.66629	0.13727
22	18.080	BB	0.0588	12.76262	3.65355	0.01295
23	18.652	BB	0.0497	46.48314	15.18377	0.04715
24	18.907	BB	0.0718	40.95577	8.55954	0.04155
25	19.746	BB	0.0491	438.80161	145.90846	0.44513
26	20.132	BB	0.0435	66.45120	24.63751	0.06741
27	20.316	BV	0.0508	69.22559	21.96889	0.07022
28	20.465	VB	0.0635	64.72475	15.24085	0.06566
29	20.933	BB	0.0474	13.12534	4.32733	0.01331
30	21.095	BB	0.0564	22.52125	6.20246	0.02285
31	21.810	BB	0.0537	29.69624	8.72415	0.03012
32	22.581	BV	0.0767	53.02012	9.86020	0.05378
33	23.650	BB	0.0523	69.04614	21.03475	0.07004
34	23.958	BV	0.0538	21.48754	6.30071	0.02180
35	24.097	VB	0.0566	125.00465	34.23283	0.12681
36	24.394	BB	0.0598	731.60352	186.19371	0.74216
37	25.152	BB	0.0516	729.01819	226.18817	0.73953
38	25.503	BV	0.0780	97.02515	18.87957	0.09842
39	25.659	VB	0.0558	46.48006	13.61296	0.04715
40	25.976	BB	0.0807	81.47523	14.24417	0.08265
41	26.470	BB	0.1098	2.18712e4	2841.89209	22.18672
42	26.795	BB	0.0567	18.12665	4.94822	0.01839
43	27.144	BB	0.0545	283.14032	81.62474	0.28722
44	27.322	BB	0.0540	21.05969	6.14146	0.02136
45	27.629	BB	0.0652	26.41353	5.79339	0.02679
46	27.788	BB	0.0525	26.44191	8.00383	0.02682
47	28.179	BV	0.1017	90.39177	12.60314	0.09170
48	28.315	VB	0.0656	97.84390	22.11778	0.09926
49	28.728	BB	0.0523	183.91472	56.09137	0.18657
50	29.128	BB	0.0534	1815.05444	537.33234	1.84124
51	29.517	BB	0.0629	52.82072	12.59094	0.05358
52	30.246	BB	0.0603	512.49957	129.02599	0.51989
53	31.199	BB	0.0500	15.77834	5.40783	0.01601
54	31.418	BB	0.0612	35.76103	8.83116	0.03628
55	32.997	BB	0.0514	14.53185	4.53453	0.01474
56	35.501	BB	0.0565	27.14220	7.82507	0.02753
57	37.652	BB	0.0533	140.35899	41.70654	0.14238
58	38.305	BB	0.0546	54.35543	16.43905	0.05514

Totals : 9.85779e4 1.91538e4

=====

*** End of Report ***