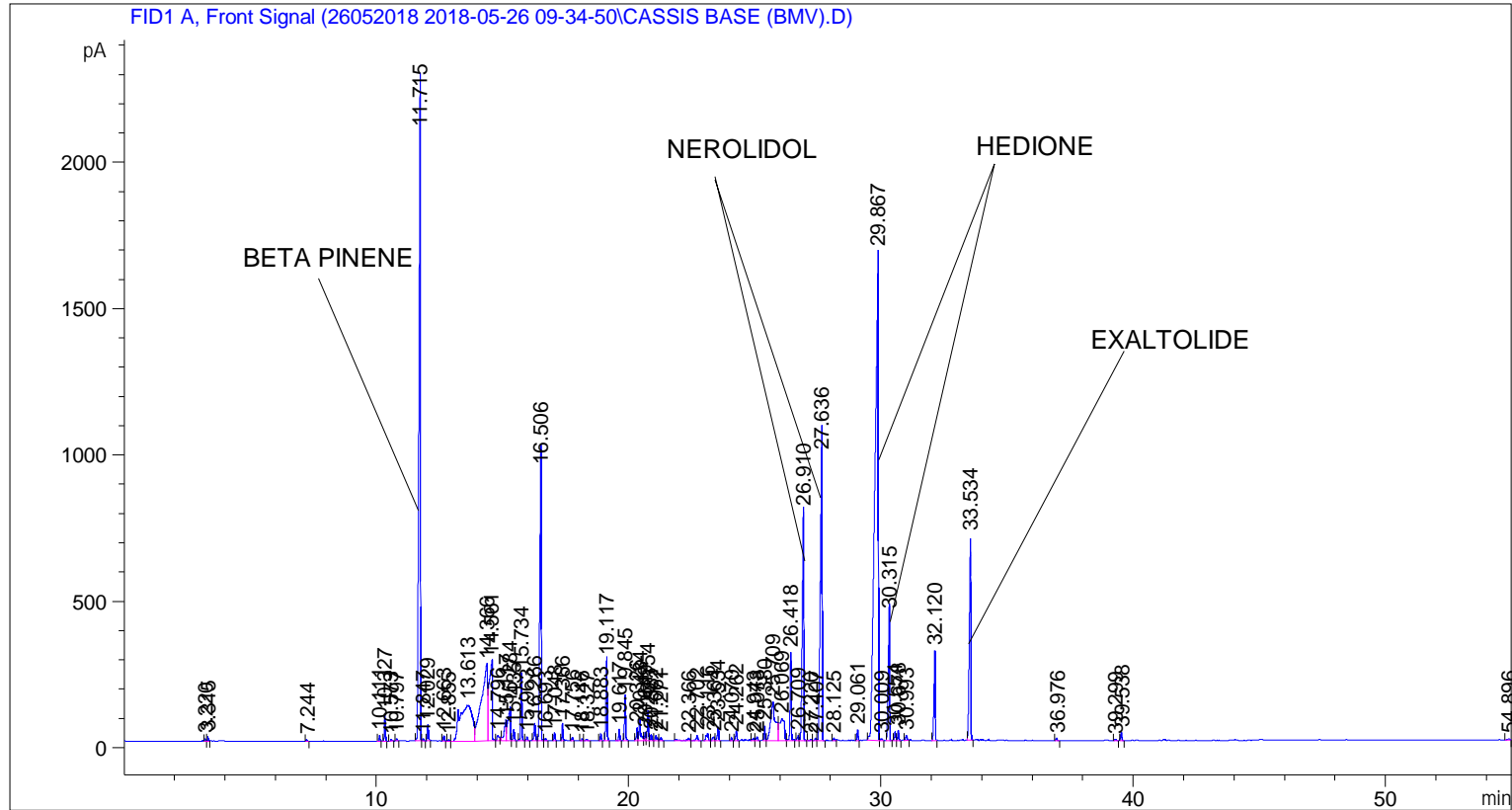


```

=====
Acq. Operator   : SYSTEM                               Seq. Line :    1
Acq. Instrument : BMV_NEW_GC_7820                     Location  : Vial 101
Injection Date  : 5/26/2018 9:48:16 AM                 Inj       :    1
                                                    Inj Volume: 0.5 µl

Acq. Method    : C:\CHEM32\2\DATA\26052018 2018-05-26 09-34-50\UNIVERSAL F.M
Last changed   : 5/26/2018 9:34:58 AM by SYSTEM
Analysis Method : C:\CHEM32\2\DATA\26052018 2018-05-26 09-34-50\UNIVERSAL F.M (Sequence
Method)
Last changed   : 5/31/2018 3:53:20 PM by SYSTEM
                (modified after loading)
  
```



=====
 Area Percent Report
 =====

```

Sorted By      :      Signal
Multiplier     :      1.0000
Dilution       :      1.0000
Do not use Multiplier & Dilution Factor with ISTDs
  
```

Signal 1: FID1 A, Front Signal

Peak #	RetTime [min]	Type	Width [min]	Area [pA*s]	Height [pA]	Area %
1	3.220	BV	0.0352	13.26668	6.67613	0.02006
2	3.315	VB	0.0365	31.18157	14.84687	0.04714
3	7.244	BB	0.0435	14.48547	5.37138	0.02190
4	10.111	BB	0.0459	51.97056	17.90230	0.07857
5	10.327	BB	0.0453	248.07904	86.87175	0.37505
6	10.573	BB	0.0545	14.94769	4.52898	0.02260
7	10.797	BB	0.0503	21.67215	6.59933	0.03276

Sample Name: CASSIS BASE (BMV)

Peak #	RetTime [min]	Type	Width [min]	Area [pA*s]	Height [pA]	Area %
8	11.715	BV	0.0691	9463.71973	2078.95483	14.30722
9	11.847	VB	0.0489	23.40529	7.40367	0.03538
10	12.029	BB	0.0473	162.97299	53.87757	0.24638
11	12.663	BB	0.0450	49.36391	17.47763	0.07463
12	12.855	BB	0.0458	13.26522	4.57400	0.02005
13	13.613	BV	0.4502	4185.57275	121.40382	6.32774
14	14.366	VV	0.2297	4613.79785	261.66568	6.97513
15	14.561	VV	0.1082	2273.85767	275.90463	3.43761
16	14.796	VB	0.0940	132.92247	18.92226	0.20095
17	15.117	BV	0.0960	409.65363	66.41196	0.61931
18	15.284	VV	0.0979	809.32367	109.90181	1.22353
19	15.435	VB	0.0606	150.96539	39.45294	0.22823
20	15.734	BB	0.0526	718.25812	228.82703	1.08586
21	15.963	BB	0.0646	56.52799	13.56402	0.08546
22	16.266	BV	0.0657	255.48586	59.94955	0.38624
23	16.506	VB	0.0670	4045.60278	925.66058	6.11613
24	16.693	BB	0.0592	29.28660	7.90616	0.04428
25	17.048	BB	0.0465	83.33137	28.16635	0.12598
26	17.366	BB	0.0455	167.85254	58.53852	0.25376
27	17.756	BB	0.0476	36.37029	11.90446	0.05498
28	18.146	BV	0.0499	18.77593	6.45363	0.02839
29	18.327	VB	0.0809	28.31537	5.80197	0.04281
30	18.883	BB	0.0471	69.23212	23.02872	0.10466
31	19.117	BB	0.0570	956.50977	272.12253	1.44605
32	19.617	BB	0.0483	116.91440	37.58826	0.17675
33	19.845	BB	0.0485	482.75119	154.23572	0.72982
34	20.326	BV	0.0512	152.47762	45.34638	0.23052
35	20.434	VV	0.0656	345.91278	75.30932	0.52295
36	20.649	VV	0.0576	112.06812	28.64781	0.16942
37	20.754	VV	0.0512	342.30823	101.92991	0.51750
38	20.881	VB	0.0590	74.27229	20.14207	0.11228
39	21.062	BV	0.0713	87.18045	17.14913	0.13180
40	21.271	VB	0.0695	43.86600	10.33194	0.06632
41	22.366	BV	0.1369	98.61713	9.51710	0.14909
42	22.702	VB	0.0740	86.35612	17.37300	0.13055
43	23.116	BV	0.0829	146.38759	25.53484	0.22131
44	23.364	VV	0.0758	74.44999	13.61043	0.11255
45	23.534	VB	0.0591	170.23676	46.11955	0.25736
46	24.070	BB	0.0492	33.35833	10.44872	0.05043
47	24.262	BB	0.0617	131.15060	33.50906	0.19827
48	24.943	BV	0.0681	35.61029	7.97674	0.05384
49	25.078	VB	0.0665	50.14363	11.59072	0.07581
50	25.380	BV	0.0498	158.86899	49.01084	0.24018
51	25.709	VV	0.1715	1766.43164	132.51321	2.67049
52	26.069	VV	0.1772	1033.68152	74.80015	1.56272
53	26.418	VB	0.0514	1013.94196	300.38229	1.53287
54	26.709	BV	0.0605	74.66630	17.94870	0.11288
55	26.910	VB	0.0655	3327.18457	784.20306	5.03003
56	27.220	BV	0.0630	19.10774	4.37157	0.02889
57	27.407	VV	0.0767	37.89856	7.80014	0.05729
58	27.636	VB	0.0804	5041.58057	974.58716	7.62185
59	28.125	BB	0.0546	31.30641	8.57139	0.04733
60	29.061	BB	0.0491	111.82092	35.20153	0.16905
61	29.867	BV	0.1209	1.55841e4	1669.99548	23.56006

Sample Name: CASSIS BASE (BMV)

Peak #	RetTime [min]	Type	Width [min]	Area [pA*s]	Height [pA]	Area %
62	30.009	VB	0.0635	26.23599	6.44444	0.03966
63	30.315	BB	0.0597	1767.64514	432.30420	2.67232
64	30.554	BV	0.0611	114.02587	29.48112	0.17238
65	30.678	VB	0.0519	105.99894	34.44108	0.16025
66	30.993	BB	0.0669	65.82221	15.10167	0.09951
67	32.120	BB	0.0550	1022.92560	305.89832	1.54646
68	33.534	BB	0.0651	2928.96753	696.14191	4.42800
69	36.976	BB	0.0571	30.24002	8.57508	0.04572
70	39.299	BB	0.0616	17.94077	4.58749	0.02712
71	39.538	BB	0.0572	97.70449	27.65249	0.14771
72	54.896	BBA	0.1179	34.27472	4.65424	0.05182

Totals : 6.61464e4 1.11317e4

=====
*** End of Report ***