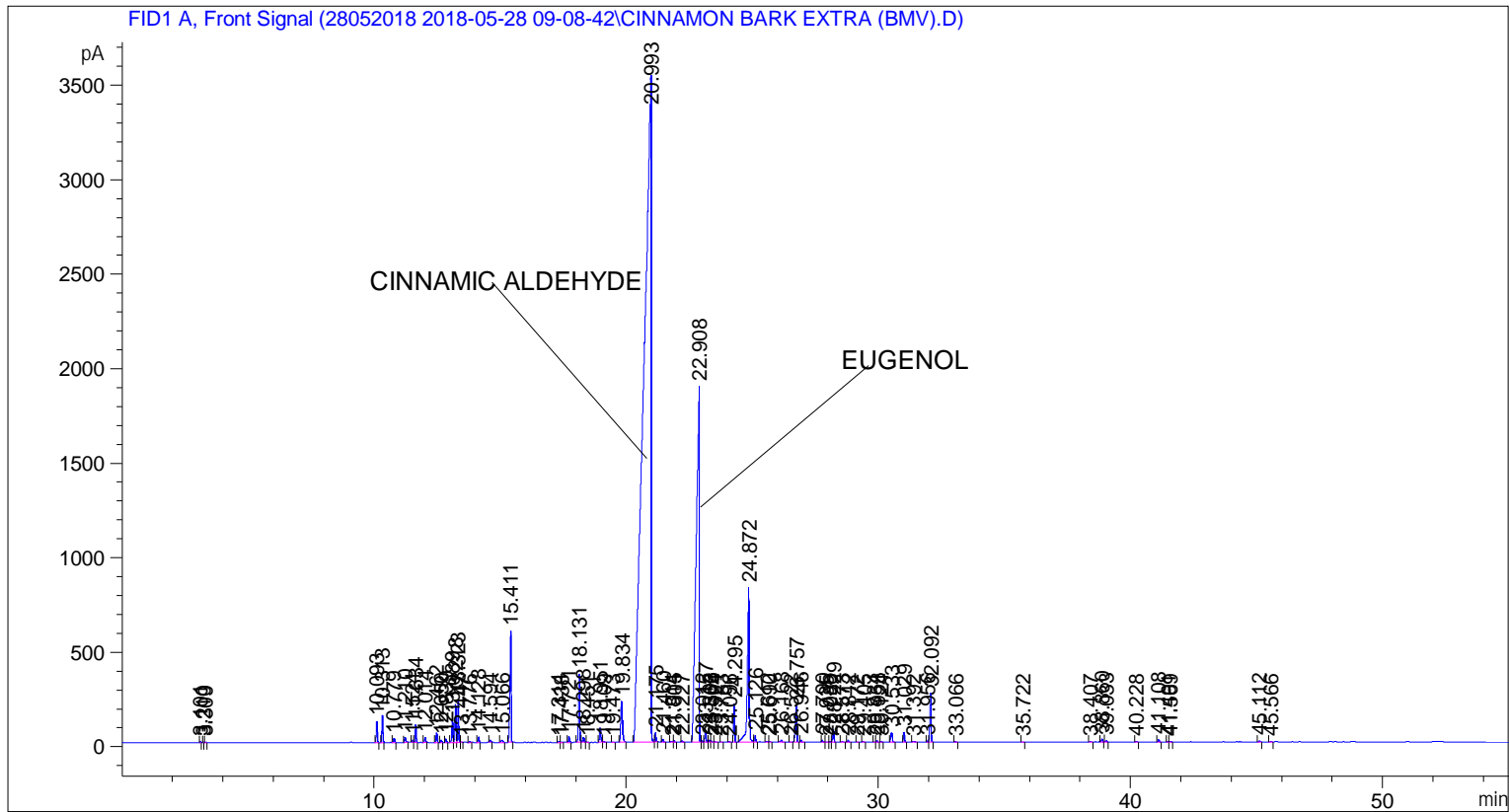


=====  
Acq. Operator : SYSTEM Seq. Line : 2  
Acq. Instrument : BMV\_NEW\_GC\_7820 Location : Vial 102  
Injection Date : 5/28/2018 10:29:47 AM Inj : 1  
Inj Volume : 0.5 µl  
Acq. Method : C:\CHEM32\2\DATA\28052018 2018-05-28 09-08-42\UNIVERSAL F.M  
Last changed : 5/28/2018 9:08:51 AM by SYSTEM  
Analysis Method : C:\CHEM32\2\METHODS\COOLING.M  
Last changed : 2/17/2018 11:11:45 AM by SYSTEM



=====  
Area Percent Report  
=====

Sorted By : Signal  
Multiplier : 1.0000  
Dilution : 1.0000  
Do not use Multiplier & Dilution Factor with ISTDs

Signal 1: FID1 A, Front Signal

Peak #	RetTime [min]	Type	Width [min]	Area [pA*s]	Height [pA]	Area %
1	3.101	BB	0.0236	7.03330	4.65851	0.00682
2	3.210	BB	0.0266	5.15713	2.92398	0.00500
3	3.309	BB	0.0260	3.64963	2.12683	0.00354
4	10.093	BB	0.0414	301.15396	111.83015	0.29198
5	10.313	BB	0.0416	384.59827	141.98318	0.37288
6	10.779	BB	0.0426	64.45985	23.03378	0.06250
7	11.210	BB	0.0501	93.00464	27.05023	0.09017
8	11.524	BV	0.0424	30.63222	11.36700	0.02970
9	11.634	VB	0.0433	267.84656	96.66840	0.25969

Sample Name: CINNAMON BARK EXTRA (BMV)

Peak #	RetTime [min]	Type	Width [min]	Area [pA*s]	Height [pA]	Area %
10	12.014	BB	0.0456	74.28243	25.06921	0.07202
11	12.462	BB	0.0440	148.97087	52.73829	0.14443
12	12.650	BB	0.0431	35.47552	12.89255	0.03439
13	12.839	BB	0.0432	50.90434	18.43731	0.04935
14	13.089	BV	0.0451	344.20334	121.23559	0.33372
15	13.218	VV	0.0457	595.69073	200.52626	0.57754
16	13.323	VB	0.0431	621.69348	225.81210	0.60275
17	13.447	BB	0.0348	3.88168	1.90015	0.00376
18	13.776	BB	0.0492	13.24166	4.03889	0.01284
19	14.128	BB	0.0433	75.05569	27.09233	0.07277
20	14.594	BB	0.0484	34.80594	10.86486	0.03375
21	15.066	BB	0.0634	51.91842	11.33719	0.05034
22	15.411	BB	0.0549	2070.31201	590.06927	2.00723
23	17.314	BV	0.0686	19.00894	4.47123	0.01843
24	17.438	VB	0.0594	13.84852	3.33579	0.01343
25	17.721	BB	0.0462	93.78842	31.96043	0.09093
26	18.131	BV	0.0490	1181.85779	362.94788	1.14585
27	18.298	VB	0.0505	93.53671	28.32666	0.09069
28	18.451	BB	0.0439	5.67417	2.07527	0.00550
29	18.951	BB	0.0563	288.08069	77.62502	0.27930
30	19.109	BB	0.0519	20.53784	5.99846	0.01991
31	19.473	BB	0.0523	10.30656	2.98481	0.00999
32	19.834	BB	0.0759	1024.82275	217.86362	0.99360
33	20.993	BV	0.2384	7.04876e4	3538.65356	68.33989
34	21.175	VB	0.0396	122.69530	48.41511	0.11896
35	21.460	BB	0.0514	53.02301	16.10858	0.05141
36	21.814	BV	0.0705	17.65405	3.57970	0.01712
37	21.905	VB	0.0489	27.14126	8.58325	0.02631
38	22.227	BB	0.0513	30.82433	8.92598	0.02989
39	22.908	BV	0.1074	1.63584e4	1882.82678	15.85999
40	23.012	VV	0.0439	26.29296	9.05308	0.02549
41	23.157	VV	0.0512	212.22540	63.20231	0.20576
42	23.303	VV	0.0448	34.09247	11.76763	0.03305
43	23.366	VB	0.0529	28.00246	7.62305	0.02715
44	23.524	BB	0.0569	8.86630	2.41195	0.00860
45	23.783	BB	0.0488	8.24637	2.47942	0.00800
46	24.096	BB	0.0527	16.40442	4.81945	0.01590
47	24.295	BB	0.0491	629.30664	203.60942	0.61013
48	24.872	BB	0.0657	4107.66699	816.17279	3.98251
49	25.126	BB	0.0516	110.06119	33.28736	0.10671
50	25.612	BV	0.0596	21.25839	5.21444	0.02061
51	25.690	VB	0.0485	8.59658	2.74722	0.00833
52	26.168	BB	0.0621	51.23219	11.47671	0.04967
53	26.522	BB	0.0522	9.56378	2.91759	0.00927
54	26.757	BB	0.0553	736.72845	198.34009	0.71428
55	26.946	BB	0.0428	34.51384	12.66235	0.03346
56	27.790	BB	0.0528	33.93200	9.94647	0.03290
57	27.935	BB	0.0586	9.95633	2.54764	0.00965
58	28.086	BV	0.0578	16.26785	4.33605	0.01577
59	28.229	VB	0.0521	218.21866	66.83688	0.21157
60	28.573	BB	0.0663	14.57601	3.37995	0.01413
61	28.812	BB	0.0510	31.00420	9.77150	0.03006
62	29.172	BB	0.0413	4.31246	1.66043	0.00418
63	29.405	BB	0.0518	11.73222	3.35731	0.01137

Peak #	RetTime [min]	Type	Width [min]	Area [pA*s]	Height [pA]	Area %
64	29.834	BV	0.0495	8.92358	2.77421	0.00865
65	29.958	VB	0.0469	26.39360	8.58756	0.02559
66	30.124	BB	0.0475	16.37598	5.37919	0.01588
67	30.533	BB	0.0694	225.08412	52.11371	0.21823
68	31.029	BB	0.0496	176.12589	54.61538	0.17076
69	31.392	BB	0.0733	28.82292	5.40046	0.02794
70	31.956	BV	0.0467	20.31997	7.02717	0.01970
71	32.092	VB	0.0513	879.99756	261.23718	0.85318
72	33.066	BB	0.0535	19.47280	5.61268	0.01888
73	35.722	BB	0.0548	9.22541	2.63610	0.00894
74	38.407	BB	0.0580	12.04832	3.26616	0.01168
75	38.860	BB	0.0545	53.03450	15.28476	0.05142
76	39.033	BB	0.0575	29.01938	7.60684	0.02814
77	40.228	BB	0.0531	10.97908	3.11306	0.01064
78	41.108	BB	0.0576	50.19387	14.08824	0.04866
79	41.491	BV	0.0507	11.18631	3.28502	0.01085
80	41.569	VB	0.0585	18.93196	4.85416	0.01836
81	45.112	BB	0.0596	26.19163	6.70635	0.02539
82	45.566	BB	0.0620	10.51551	2.60770	0.01020

Totals : 1.03143e5 9924.15525

=====  
\*\*\* End of Report \*\*\*