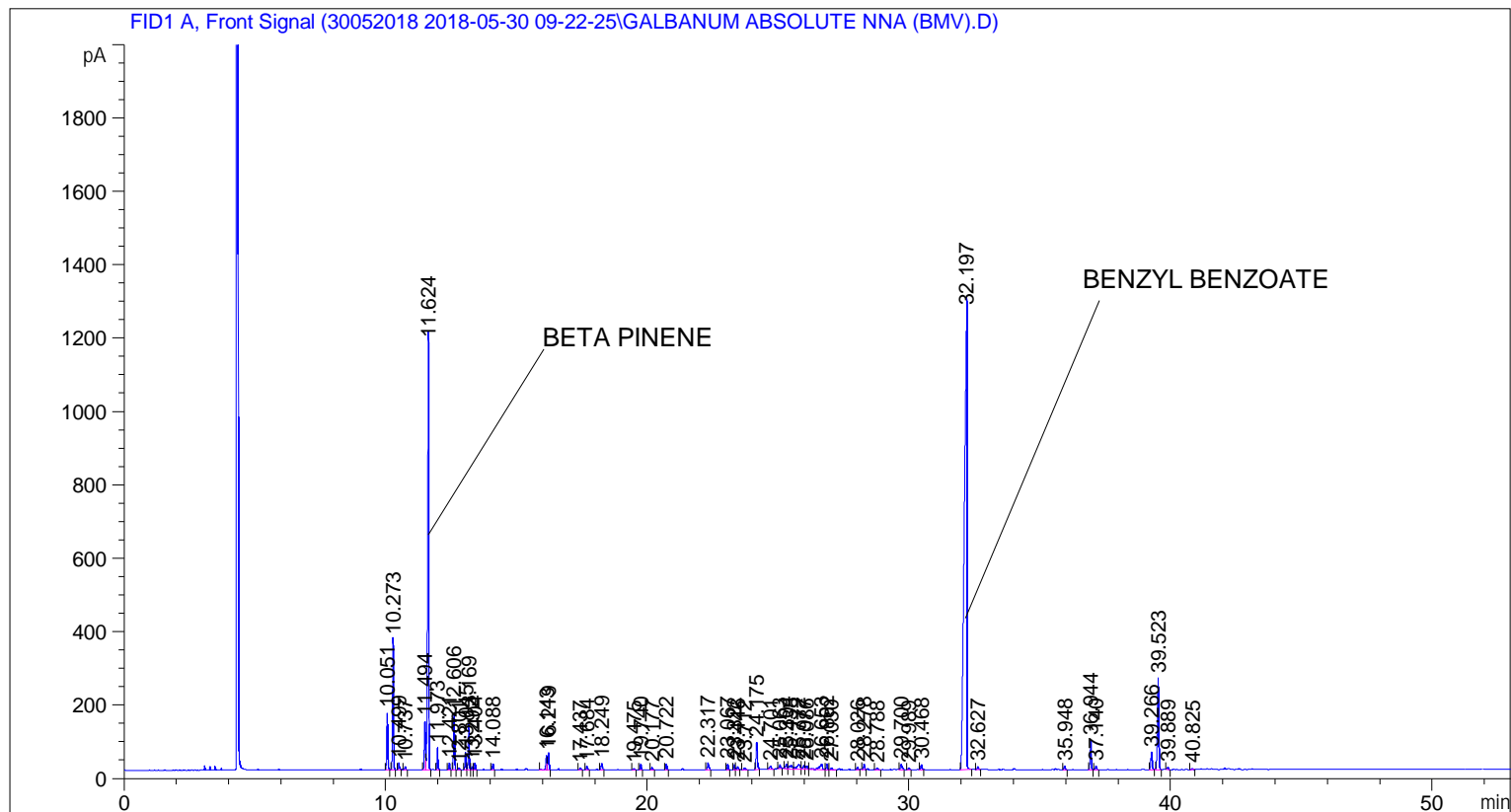


```

=====
Acq. Operator   : SYSTEM                               Seq. Line :    7
Acq. Instrument : BMV_NEW_GC_7820                     Location  : Vial 107
Injection Date  : 5/30/2018 4:21:50 PM                Inj       :    1
                                                    Inj Volume: 0.5 µl

Acq. Method    : C:\CHEM32\2\DATA\30052018 2018-05-30 09-22-25\UNIVERSAL F.M
Last changed   : 5/30/2018 9:22:31 AM by SYSTEM
Analysis Method: C:\CHEM32\2\DATA\30052018 2018-05-30 09-22-25\UNIVERSAL F.M (Sequence
Method)
Last changed   : 6/5/2018 12:23:35 PM by SYSTEM
                (modified after loading)

Additional Info : Peak(s) manually integrated
  
```



=====  
 Area Percent Report  
 =====

```

Sorted By       :      Signal
Multiplier      :      1.0000
Dilution       :      1.0000
Do not use Multiplier & Dilution Factor with ISTDs
  
```

Signal 1: FID1 A, Front Signal

Peak #	RetTime [min]	Type	Width [min]	Area [pA*s]	Height [pA]	Area %
1	10.051	BB	0.0464	431.24210	155.16541	2.19458
2	10.273	BB	0.0439	971.99756	355.54559	4.94647
3	10.499	BB	0.0462	55.65741	19.00028	0.28324
4	10.737	BB	0.0491	29.36766	9.75963	0.14945
5	11.494	BV	0.0561	457.60831	132.98018	2.32876
6	11.624	VB	0.0523	3808.17432	1160.75684	19.37970

Peak #	RetTime [min]	Type	Width [min]	Area [pA*s]	Height [pA]	Area %
7	11.973	BB	0.0430	157.22745	59.20955	0.80013
8	12.421	BB	0.0456	53.37092	18.53380	0.27160
9	12.606	BB	0.0442	419.59393	152.20461	2.13530
10	12.801	BB	0.0474	17.97064	5.91947	0.09145
11	13.045	BV	0.0468	133.98953	47.58737	0.68187
12	13.169	VV	0.0479	365.02945	125.71191	1.85763
13	13.292	VV	0.0465	26.29831	8.89466	0.13383
14	13.404	VB	0.0471	55.87671	19.69392	0.28436
15	14.088	BB	0.0460	48.57810	16.65365	0.24721
16	16.143	BV	0.0584	149.24841	39.23495	0.75952
17	16.219	VB	0.0452	137.15334	45.48050	0.69797
18	17.437	BB	0.0569	20.20708	5.49206	0.10283
19	17.684	BB	0.0513	34.86580	10.89335	0.17743
20	18.249	BB	0.0540	58.89231	17.19007	0.29970
21	19.475	BB	0.0509	11.43186	3.61717	0.05818
22	19.740	BB	0.0473	49.55112	16.37325	0.25216
23	20.177	BB	0.0547	22.97985	6.59393	0.11694
24	20.722	BB	0.0495	49.90621	16.41570	0.25397
25	22.317	BB	0.0592	74.68247	19.29726	0.38006
26	23.067	BB	0.0509	49.70644	15.70180	0.25295
27	23.322	BV	0.0513	44.48322	13.90831	0.22637
28	23.446	VB	0.0599	36.61372	9.30556	0.18633
29	23.712	BB	0.0688	20.03694	4.78780	0.10197
30	24.175	BB	0.0547	257.80878	73.87120	1.31198
31	24.701	BB	0.0696	34.75076	8.17916	0.17685
32	25.063	BB	0.0600	40.12361	10.17509	0.20419
33	25.304	BV	0.0620	51.04768	12.41455	0.25978
34	25.438	VV	0.1110	81.46258	9.40903	0.41456
35	25.772	VV	0.1276	119.80438	12.08997	0.60968
36	25.977	VV	0.0622	43.33629	10.07043	0.22054
37	26.086	VV	0.0802	47.31243	9.16246	0.24077
38	26.653	VV	0.1416	141.87245	14.07275	0.72199
39	26.862	VV	0.0510	53.14619	16.75020	0.27046
40	27.030	VB	0.0541	21.59948	6.28866	0.10992
41	28.026	BB	0.0516	22.04276	6.83852	0.11218
42	28.278	BB	0.0489	42.22382	14.10820	0.21488
43	28.788	BB	0.0678	17.50504	4.45816	0.08908
44	29.700	BB	0.0694	70.83193	15.47524	0.36046
45	29.989	BB	0.0578	19.83398	5.27833	0.10093
46	30.468	BB	0.0626	53.79799	13.45748	0.27378
47	32.197	BB	0.1026	9283.74121	1250.13635	47.24471
48	32.627	BB	0.0502	22.54585	7.69554	0.11474
49	35.948	BB	0.0554	35.00919	10.36958	0.17816
50	36.944	BB	0.0523	258.89746	78.92142	1.31752
51	37.140	BB	0.0559	32.12784	9.39037	0.16350
52	39.266	BB	0.0573	168.04120	47.46512	0.85516
53	39.523	BB	0.0584	904.87781	249.23740	4.60490
54	39.889	BB	0.0562	23.27873	6.43745	0.11846
55	40.825	BB	0.0522	11.56883	3.72699	0.05887

Totals : 1.96503e4 4417.38822

=====