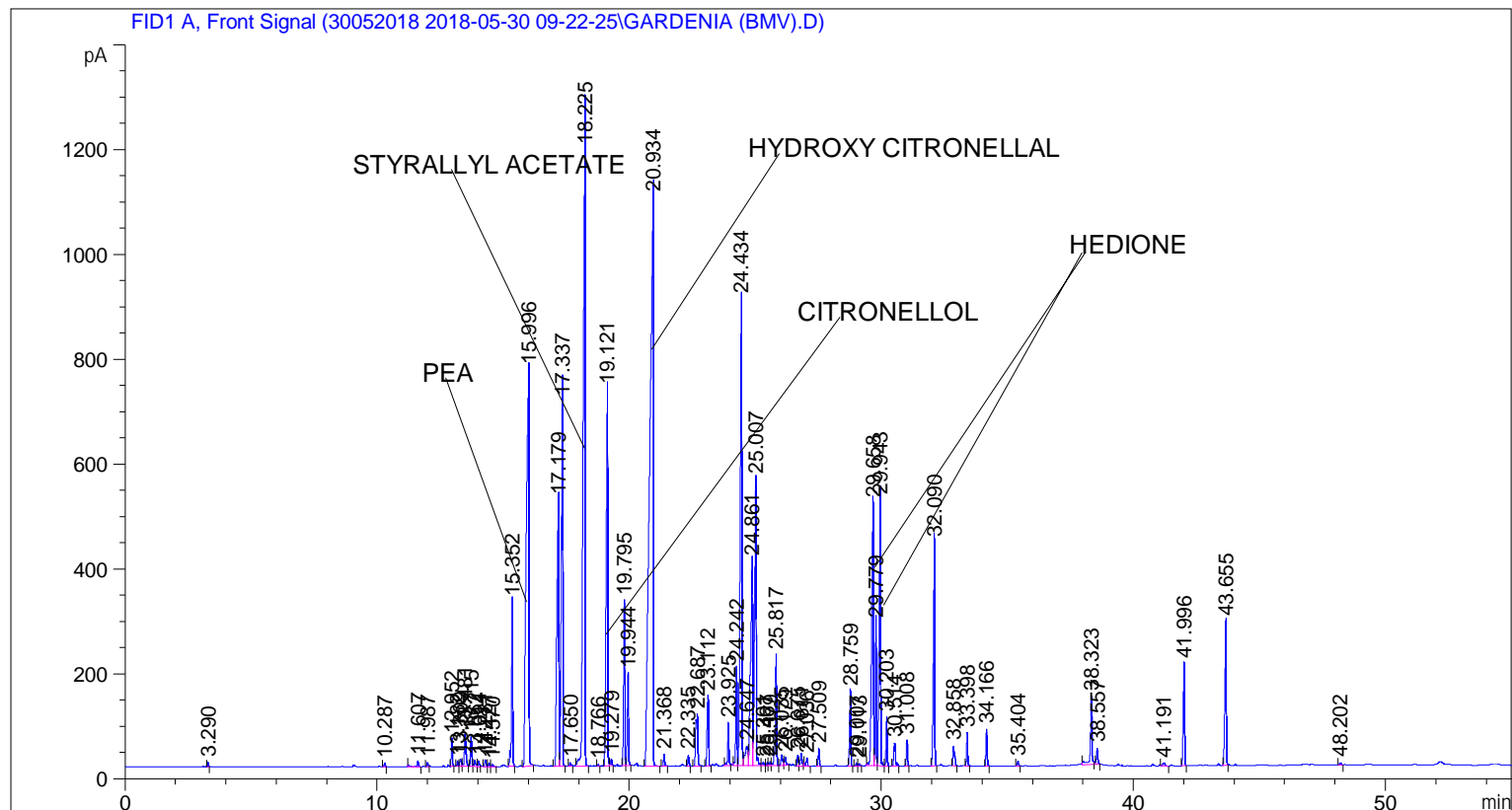


```

=====
Acq. Operator   : SYSTEM                               Seq. Line :    3
Acq. Instrument : BMV_NEW_GC_7820                     Location  : Vial 103
Injection Date  : 5/30/2018 11:52:08 AM                Inj       :    1
                                                    Inj Volume: 0.5 µl

Acq. Method    : C:\CHEM32\2\DATA\30052018 2018-05-30 09-22-25\UNIVERSAL F.M
Last changed   : 5/30/2018 9:22:31 AM by SYSTEM
Analysis Method: C:\CHEM32\2\DATA\30052018 2018-05-30 09-22-25\UNIVERSAL F.M (Sequence
Method)
Last changed   : 6/5/2018 12:25:04 PM by SYSTEM
                (modified after loading)
  
```



=====  
 Area Percent Report  
 =====

```

Sorted By      :      Signal
Multiplier     :      1.0000
Dilution       :      1.0000
Do not use Multiplier & Dilution Factor with ISTDs
  
```

Signal 1: FID1 A, Front Signal

Peak #	RetTime [min]	Type	Width [min]	Area [pA*s]	Height [pA]	Area %
1	3.290	BB	0.0316	16.38394	8.09829	0.02695
2	10.287	BB	0.0450	20.87782	7.37752	0.03435
3	11.607	BB	0.0635	48.94281	11.08719	0.08052
4	11.987	BB	0.0539	29.15639	8.12214	0.04797
5	12.952	BB	0.0460	157.47298	53.95987	0.25907
6	13.182	BV	0.0480	30.36187	10.42073	0.04995
7	13.309	VV	0.0837	70.54379	13.78393	0.11606

Sample Name: GARDENIA (BMV)

Peak #	RetTime [min]	Type	Width [min]	Area [pA*s]	Height [pA]	Area %
8	13.481	VB	0.0688	280.19296	61.89778	0.46097
9	13.715	BV	0.0527	187.64577	56.60595	0.30871
10	13.862	VB	0.0630	50.93704	11.65231	0.08380
11	14.014	BB	0.0536	38.77876	10.86774	0.06380
12	14.281	BV	0.0660	51.43536	12.51073	0.08462
13	14.427	VB	0.0492	21.88353	6.86135	0.03600
14	14.570	BB	0.0521	13.53515	3.93408	0.02227
15	15.352	BB	0.0549	1105.13696	315.02844	1.81817
16	15.996	BB	0.1051	5902.21094	756.22729	9.71030
17	17.179	BV	0.1008	2902.54761	507.25345	4.77526
18	17.337	VB	0.0647	2906.02832	696.39911	4.78099
19	17.650	BB	0.0693	31.99901	6.51764	0.05264
20	18.225	BB	0.0829	6944.35596	1175.24573	11.42483
21	18.766	BB	0.0470	10.88887	3.62706	0.01791
22	19.121	BV	0.0750	3269.07227	719.17969	5.37827
23	19.279	VB	0.0518	46.28994	13.57529	0.07616
24	19.795	BV	0.0523	1033.49438	314.90250	1.70030
25	19.944	VB	0.0589	641.46844	174.52463	1.05534
26	20.934	BB	0.1318	1.11457e4	1085.64160	18.33690
27	21.368	BB	0.0492	73.36066	23.02458	0.12069
28	22.335	BB	0.0516	69.80813	21.63867	0.11485
29	22.687	BB	0.0805	583.54895	99.35341	0.96005
30	23.112	BB	0.0685	550.85608	132.64413	0.90627
31	23.925	BB	0.0534	272.80310	80.82044	0.44881
32	24.242	BV	0.0512	601.75568	188.66840	0.99001
33	24.434	VV	0.0651	3902.85645	890.28418	6.42097
34	24.647	VV	0.1187	326.31757	37.08406	0.53686
35	24.861	VV	0.0788	2165.72217	390.18604	3.56304
36	25.007	VB	0.0672	2399.98145	546.59943	3.94844
37	25.301	BV	0.0810	31.70305	6.05914	0.05216
38	25.467	VV	0.0527	21.94357	6.28970	0.03610
39	25.579	VV	0.0555	29.69966	7.96563	0.04886
40	25.817	VB	0.0547	739.21649	211.77545	1.21616
41	26.035	BV	0.0706	99.76489	20.57634	0.16413
42	26.179	VB	0.0593	59.20585	15.24881	0.09741
43	26.675	BV	0.0535	73.49880	21.69669	0.12092
44	26.811	VB	0.0616	97.23206	23.82117	0.15997
45	27.036	BB	0.0567	57.14551	15.61085	0.09402
46	27.509	BB	0.0513	105.50520	33.02628	0.17358
47	28.759	BB	0.0530	476.51981	142.61588	0.78397
48	29.007	BV	0.0550	18.33064	5.47976	0.03016
49	29.113	VB	0.0641	19.63076	4.56681	0.03230
50	29.658	BV	0.0823	2589.72144	501.16653	4.26060
51	29.779	VV	0.0489	865.61432	273.34555	1.42411
52	29.943	VV	0.0649	2128.25684	507.51251	3.50140
53	30.203	VB	0.0501	289.55002	93.69276	0.47637
54	30.514	BB	0.0781	211.06181	43.89089	0.34724
55	31.008	BB	0.0519	164.42703	50.58188	0.27051
56	32.090	BB	0.0590	1641.76343	425.20465	2.70102
57	32.858	BB	0.0668	171.45824	37.91594	0.28208
58	33.398	BB	0.0514	203.87222	63.66243	0.33541
59	34.166	BB	0.0549	236.75281	70.94776	0.38950
60	35.404	BB	0.0578	35.35038	9.40927	0.05816
61	38.323	BB	0.0655	574.55225	130.03798	0.94525

Sample Name: GARDENIA (BMV)

Peak #	RetTime [min]	Type	Width [min]	Area [pA*s]	Height [pA]	Area %
62	38.557	BB	0.0585	120.36860	31.53146	0.19803
63	41.191	BB	0.0979	33.43017	5.74522	0.05500
64	41.996	BB	0.0562	704.79034	194.97911	1.15952
65	43.655	BB	0.0591	1060.09888	274.43665	1.74407
66	48.202	BB	0.0650	18.17532	4.32718	0.02990

Totals :                                   6.07830e4  1.16887e4

=====

\*\*\* End of Report \*\*\*