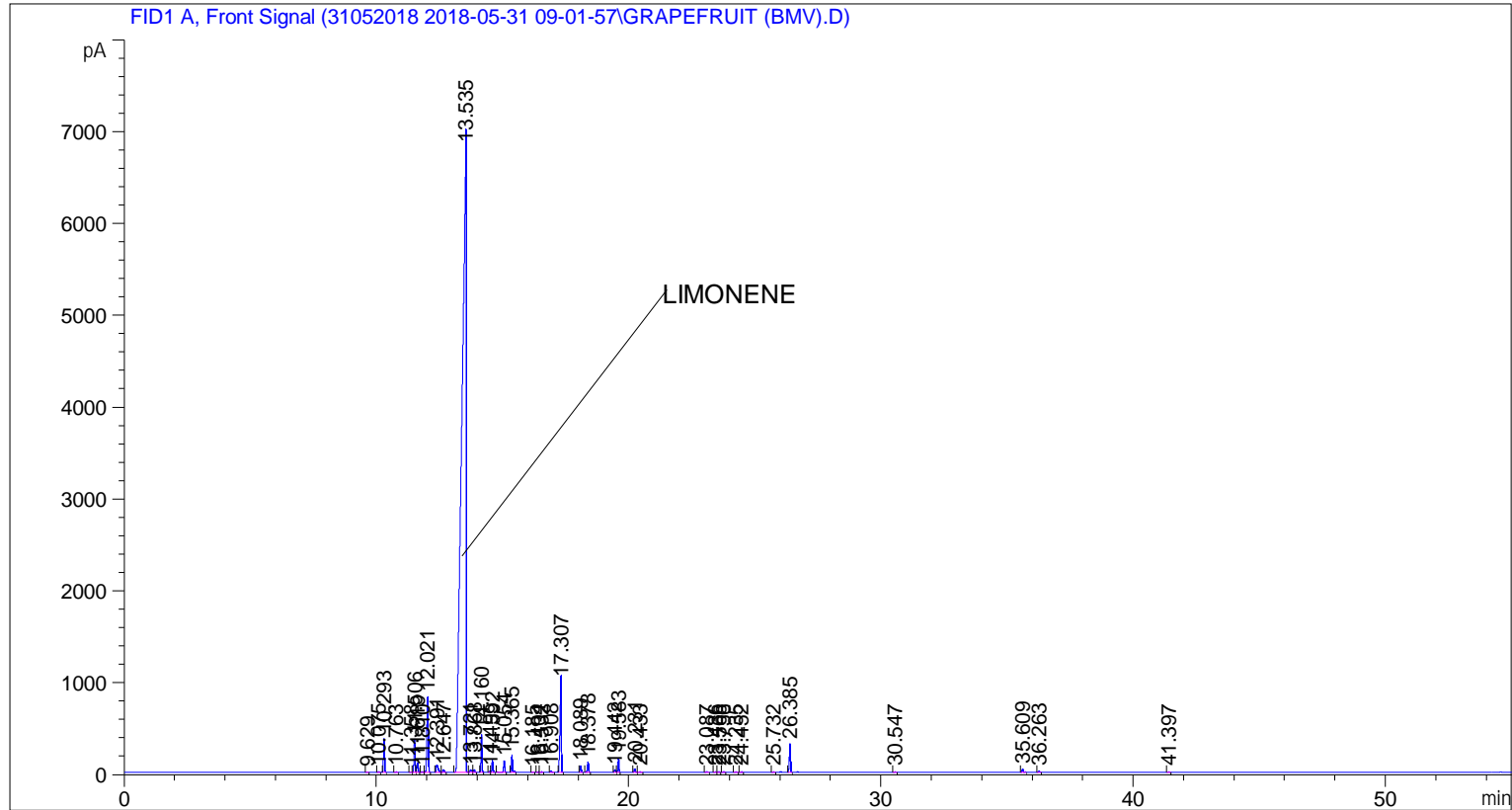


```

=====
Acq. Operator   : SYSTEM                               Seq. Line :    5
Acq. Instrument : BMV_NEW_GC_7820                     Location  : Vial 105
Injection Date  : 5/31/2018 1:42:46 PM                 Inj       :    1
                                                    Inj Volume: 0.5 µl

Acq. Method     : C:\CHEM32\2\DATA\31052018 2018-05-31 09-01-57\UNIVERSAL F.M
Last changed    : 5/31/2018 9:02:02 AM by SYSTEM
Analysis Method : C:\CHEM32\2\DATA\31052018 2018-05-31 09-01-57\UNIVERSAL F.M (Sequence
Method)
Last changed    : 6/5/2018 12:35:57 PM by SYSTEM
                  (modified after loading)
  
```



=====
 Area Percent Report
 =====

```

Sorted By       : Signal
Multiplier      : 1.0000
Dilution       : 1.0000
Do not use Multiplier & Dilution Factor with ISTDs
  
```

Signal 1: FID1 A, Front Signal

Peak #	RetTime [min]	Type	Width [min]	Area [pA*s]	Height [pA]	Area %
1	9.629	BB	0.0430	9.95141	3.74052	0.00990
2	10.075	BB	0.0441	34.94755	12.69782	0.03477
3	10.293	BB	0.0452	1042.72168	366.58096	1.03752
4	10.763	BB	0.0513	17.31555	5.42097	0.01723
5	11.358	BV	0.0474	12.08529	3.98290	0.01203
6	11.506	VV	0.0506	1135.44531	362.17838	1.12978
7	11.619	VB	0.0502	324.54086	104.49004	0.32292

Sample Name: GRAPEFRUIT (BMV)

Peak #	RetTime [min]	Type	Width [min]	Area [pA*s]	Height [pA]	Area %
8	11.810	BV	0.0557	35.04475	9.80404	0.03487
9	12.021	VB	0.0592	3032.93774	819.93488	3.01781
10	12.391	BV	0.0761	431.11795	83.65807	0.42897
11	12.647	VB	0.0718	134.66029	30.30113	0.13399
12	13.535	BV	0.1556	8.48747e4	6800.54834	84.45145
13	13.721	VV	0.0702	143.53302	29.77605	0.14282
14	13.868	VB	0.0545	99.04786	28.53844	0.09855
15	14.160	BB	0.0440	1131.70532	412.15729	1.12606
16	14.495	BV	0.0484	41.70677	13.35182	0.04150
17	14.592	VB	0.0475	391.06781	136.17409	0.38912
18	15.054	BB	0.0498	411.47360	126.89830	0.40942
19	15.365	BB	0.0503	595.39069	191.38074	0.59242
20	16.185	BB	0.0447	12.93303	4.61093	0.01287
21	16.404	BV	0.0481	16.84125	5.75822	0.01676
22	16.532	VB	0.0551	25.55934	6.92173	0.02543
23	16.908	BB	0.0549	48.12375	13.07877	0.04788
24	17.307	BB	0.0602	3908.95239	986.10425	3.88946
25	18.089	BB	0.0482	197.10535	67.31715	0.19612
26	18.378	BB	0.0493	348.55936	115.27450	0.34682
27	19.442	BV	0.0490	99.12402	31.24243	0.09863
28	19.583	VB	0.0473	449.05518	157.15651	0.44682
29	20.231	BB	0.0510	144.80244	45.61962	0.14408
30	20.433	BB	0.0589	28.45077	7.07690	0.02831
31	23.087	BB	0.0565	19.72621	5.68291	0.01963
32	23.436	BV	0.0660	21.99155	5.13528	0.02188
33	23.568	VB	0.0507	24.21295	7.69503	0.02409
34	23.756	BB	0.0517	31.50274	9.75913	0.03135
35	24.235	BB	0.0550	17.30241	5.17606	0.01722
36	24.452	BB	0.0509	20.45977	6.46430	0.02036
37	25.732	BB	0.0529	15.89090	4.76480	0.01581
38	26.385	BB	0.0510	964.52649	303.97882	0.95972
39	30.547	BB	0.0588	18.95934	5.16523	0.01886
40	35.609	BB	0.0582	130.21620	34.35862	0.12957
41	36.263	BB	0.0524	43.71149	13.28739	0.04349
42	41.397	BB	0.0555	13.77538	3.87481	0.01371

Totals : 1.00501e5 1.13871e4

=====
*** End of Report ***