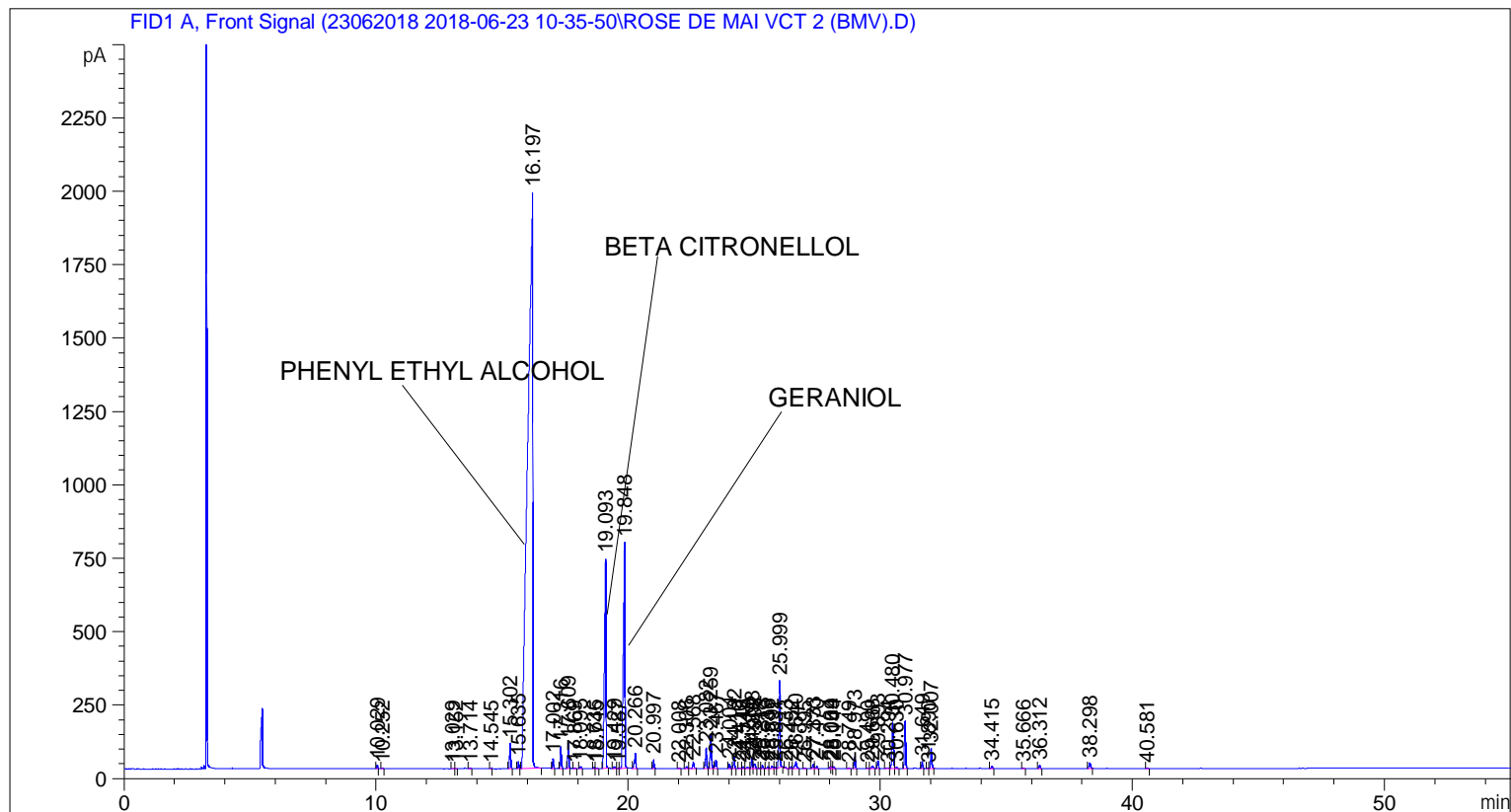


```

=====
Acq. Operator   : SYSTEM                               Seq. Line :    1
Acq. Instrument : BMV_NEW_GC_7820                     Location  : Vial 101
Injection Date  : 6/23/2018 10:39:50 AM                Inj       :    1
                                                    Inj Volume: 0.5 µl

Acq. Method     : C:\CHEM32\2\DATA\23062018 2018-06-23 10-35-50\UNIVERSAL F.M
Last changed    : 6/23/2018 10:35:58 AM by SYSTEM
Analysis Method : C:\CHEM32\2\DATA\23062018 2018-06-23 10-35-50\UNIVERSAL F.M (Sequence
Method)
Last changed    : 7/12/2018 10:41:18 AM by SYSTEM
                  (modified after loading)

Additional Info : Peak(s) manually integrated
  
```



=====
 Area Percent Report
 =====

```

Sorted By      :      Signal
Multiplier     :      1.0000
Dilution      :      1.0000
Do not use Multiplier & Dilution Factor with ISTDs
  
```

Signal 1: FID1 A, Front Signal

Peak #	RetTime [min]	Type	Width [min]	Area [pA*s]	Height [pA]	Area %
1	10.029	BB	0.0407	37.44912	14.24525	0.09498
2	10.252	BB	0.0424	7.90223	2.94058	0.02004
3	13.029	BB	0.0450	5.28739	1.87054	0.01341
4	13.152	BB	0.0445	5.82829	2.02929	0.01478
5	13.714	BB	0.0498	11.24830	3.38111	0.02853
6	14.545	BB	0.0465	8.39453	2.68503	0.02129

Peak #	RetTime [min]	Type	Width [min]	Area [pA*s]	Height [pA]	Area %
7	15.302	BB	0.0460	252.40710	86.52376	0.64019
8	15.635	BB	0.0446	70.49326	24.51116	0.17880
9	16.197	BB	0.1638	2.68984e4	1963.80225	68.22353
10	17.002	BB	0.0437	95.86271	34.19773	0.24314
11	17.316	BB	0.0432	212.81429	74.69736	0.53977
12	17.609	BB	0.0445	244.02632	84.90221	0.61893
13	17.869	BB	0.0467	7.02736	2.36365	0.01782
14	18.095	BB	0.0554	24.85254	6.99608	0.06303
15	18.636	BV	0.0475	13.92642	4.45716	0.03532
16	18.745	VB	0.0556	8.83818	2.41795	0.02242
17	19.093	BB	0.0584	2962.75464	714.07092	7.51457
18	19.429	BB	0.0534	23.70694	6.68509	0.06013
19	19.587	BV	0.0425	5.10558	1.89252	0.01295
20	19.848	VB	0.0620	3489.16870	768.75751	8.84973
21	20.266	BB	0.0525	179.99750	50.62064	0.45654
22	20.997	BB	0.0455	85.75159	29.85261	0.21750
23	22.008	BB	0.0592	10.01791	2.52879	0.02541
24	22.306	BV	0.0576	28.69096	7.84976	0.07277
25	22.568	VB	0.0586	79.36629	20.30235	0.20130
26	23.082	BB	0.0535	250.78749	70.54266	0.63608
27	23.259	BB	0.0539	416.50101	115.88663	1.05639
28	23.467	BB	0.0534	105.02711	29.59959	0.26638
29	24.004	BB	0.0486	50.23358	16.45846	0.12741
30	24.192	BB	0.0521	143.25865	42.73655	0.36335
31	24.410	BB	0.0653	14.21084	3.10819	0.03604
32	24.548	BV	0.0531	28.97354	8.02215	0.07349
33	24.718	VV	0.0801	36.23112	6.02796	0.09189
34	24.898	VV	0.0517	112.57830	33.94854	0.28554
35	24.992	VB	0.0622	79.03629	18.00836	0.20046
36	25.218	BV	0.0487	11.66300	3.70424	0.02958
37	25.313	VB	0.0509	35.78036	10.72188	0.09075
38	25.536	BV	0.0606	26.01283	6.23954	0.06598
39	25.692	VV	0.0659	40.63556	8.96352	0.10307
40	25.831	VV	0.0448	7.54349	2.68384	0.01913
41	25.999	VB	0.0487	981.82019	296.31250	2.49023
42	26.233	BB	0.0484	7.21218	2.37526	0.01829
43	26.452	BV	0.0479	18.76767	6.09488	0.04760
44	26.640	VB	0.0725	121.61317	23.45067	0.30845
45	26.995	BB	0.0540	10.67091	3.03340	0.02707
46	27.333	BV	0.0580	56.23394	14.57516	0.14263
47	27.470	VB	0.0560	29.58274	8.02354	0.07503
48	28.004	BV	0.0469	21.82779	7.08624	0.05536
49	28.059	VV	0.0486	25.06999	7.58040	0.06359
50	28.144	VB	0.0522	25.19945	7.32211	0.06391
51	28.749	BB	0.0735	14.72217	2.93708	0.03734
52	28.973	BB	0.0503	127.07401	39.79639	0.32230
53	29.490	BB	0.0466	7.89667	2.66204	0.02003
54	29.668	BB	0.0730	41.72288	8.24534	0.10582
55	29.893	BB	0.0492	84.46822	26.48794	0.21424
56	30.294	BV	0.0810	19.48129	3.24457	0.04941
57	30.480	VV	0.0663	663.16199	160.23662	1.68201
58	30.630	VB	0.0503	15.04957	4.58663	0.03817
59	30.977	BB	0.0527	530.39203	163.94521	1.34526
60	31.649	BB	0.0488	73.40604	23.28163	0.18618

Peak #	RetTime [min]	Type	Width [min]	Area [pA*s]	Height [pA]	Area %
61	31.890	BV	0.0466	7.29793	2.53252	0.01851
62	32.007	VB	0.0532	242.29228	68.69217	0.61454
63	34.415	BB	0.0560	29.74170	8.25931	0.07544
64	35.666	BB	0.0601	15.21773	3.68768	0.03860
65	36.312	BB	0.0521	39.67253	11.83536	0.10062
66	38.298	BB	0.0600	79.24323	19.26974	0.20099
67	40.581	BB	0.0512	10.22229	3.03967	0.02593

Totals : 3.94268e4 5219.82743

=====
*** End of Report ***