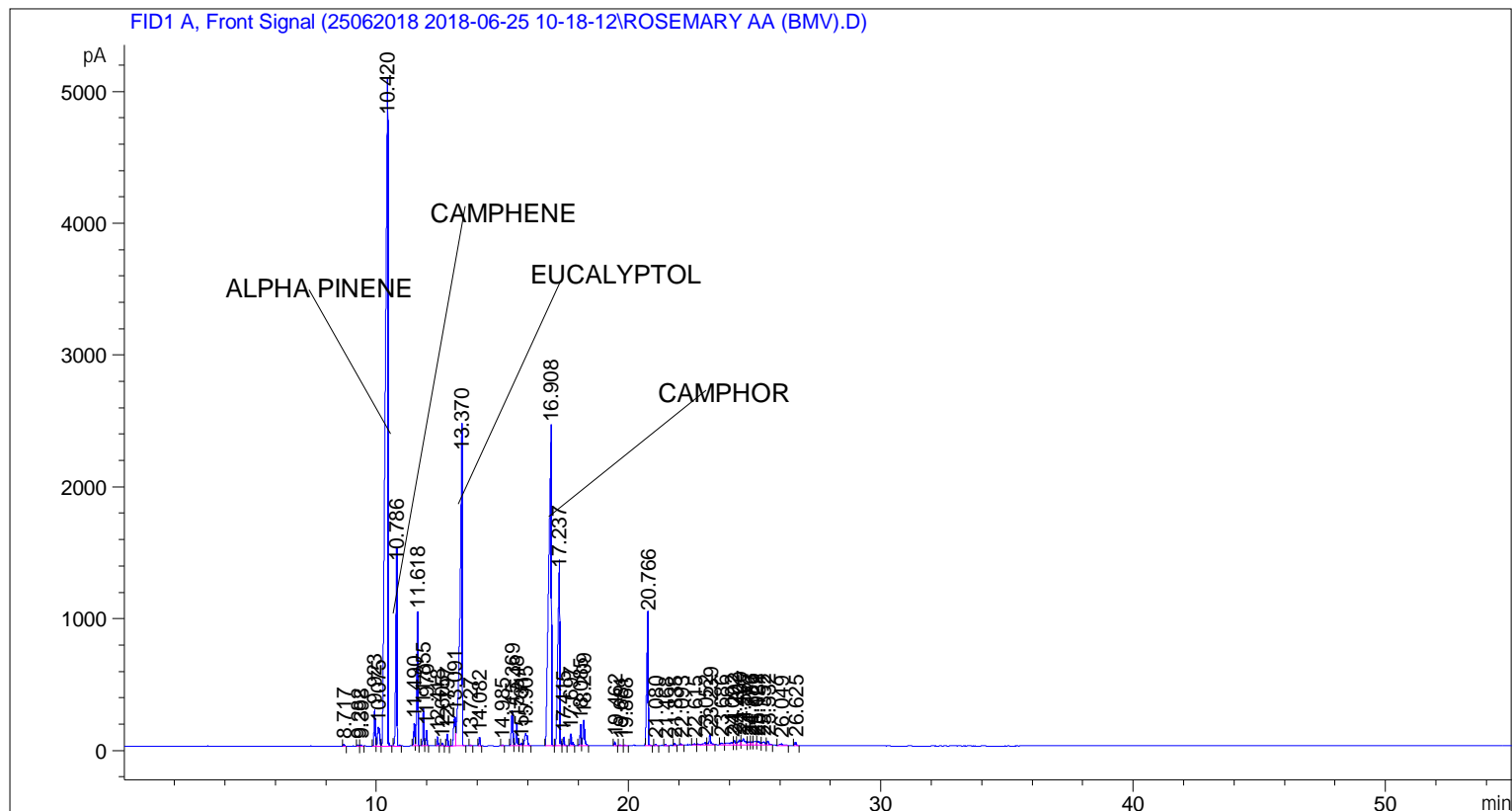


```

=====
Acq. Operator   : SYSTEM                               Seq. Line :    1
Acq. Instrument : BMV_NEW_GC_7820                     Location  : Vial 101
Injection Date  : 6/25/2018 10:22:06 AM                Inj       :    1
                                                    Inj Volume: 0.5 µl

Acq. Method     : C:\CHEM32\2\DATA\25062018 2018-06-25 10-18-12\UNIVERSAL F.M
Last changed    : 6/25/2018 10:18:17 AM by SYSTEM
Analysis Method : C:\CHEM32\2\DATA\25062018 2018-06-25 10-18-12\UNIVERSAL F.M (Sequence
Method)
Last changed    : 7/13/2018 4:23:51 PM by SYSTEM
                  (modified after loading)
  
```



=====
 Area Percent Report
 =====

```

Sorted By       :      Signal
Multiplier      :      1.0000
Dilution        :      1.0000
Do not use Multiplier & Dilution Factor with ISTDs
  
```

Signal 1: FID1 A, Front Signal

Peak #	RetTime [min]	Type	Width [min]	Area [pA*s]	Height [pA]	Area %
1	8.717	BB	0.0442	34.36488	12.45046	0.03482
2	9.282	BV	0.0508	25.80367	8.65306	0.02615
3	9.398	VB	0.0512	22.78449	7.56197	0.02309
4	9.923	BV	0.0590	993.35370	269.28329	1.00659
5	10.075	VV	0.0907	809.44269	141.48430	0.82023
6	10.420	VB	0.1003	3.42918e4	4747.91406	34.74884
7	10.786	BB	0.0572	4810.91309	1361.77539	4.87503

Sample Name: ROSEMARY AA (BMV)

Peak #	RetTime [min]	Type	Width [min]	Area [pA*s]	Height [pA]	Area %
8	11.490	BV	0.0539	542.95013	167.27487	0.55019
9	11.618	VB	0.0477	3064.21191	1001.37079	3.10505
10	11.855	BV	0.0490	774.31421	273.99203	0.78463
11	11.970	VB	0.0453	323.85657	113.40549	0.32817
12	12.418	BB	0.0457	193.34286	67.02011	0.19592
13	12.605	BB	0.0458	59.37299	20.49424	0.06016
14	12.797	BB	0.0483	267.73557	86.00213	0.27130
15	13.091	BV	0.0858	1162.63867	219.53883	1.17813
16	13.370	VB	0.0911	1.41731e4	2202.21143	14.36196
17	13.727	BB	0.0455	15.65707	5.44476	0.01587
18	14.082	BB	0.0451	181.52200	63.88468	0.18394
19	14.985	BB	0.0526	29.96466	8.61462	0.03036
20	15.369	BV	0.0678	1084.90466	264.66180	1.09936
21	15.548	VV	0.0575	600.13605	168.63013	0.60813
22	15.731	VV	0.0691	90.64353	19.93303	0.09185
23	15.905	VB	0.1057	696.02264	90.57256	0.70530
24	16.908	BV	0.1005	1.74963e4	2415.91943	17.72950
25	17.237	VV	0.0893	7330.91211	1308.79895	7.42862
26	17.415	VB	0.0545	199.22632	60.36417	0.20188
27	17.697	BB	0.0572	345.51587	89.27799	0.35012
28	18.085	BV	0.0476	474.38467	155.36909	0.48071
29	18.209	VB	0.0776	943.68262	191.04901	0.95626
30	19.462	BB	0.0521	97.26933	28.28370	0.09857
31	19.681	BB	0.0545	29.84074	9.03182	0.03024
32	19.868	BB	0.0500	24.94341	8.55472	0.02528
33	20.766	BB	0.0630	3942.88916	978.41083	3.99544
34	21.080	BB	0.0596	49.98637	13.38988	0.05065
35	21.468	BB	0.0424	18.16382	8.03894	0.01841
36	21.835	BB	0.0447	47.58751	17.00370	0.04822
37	22.093	BB	0.0538	28.72234	8.86886	0.02911
38	22.615	BV	0.0807	70.81174	12.03375	0.07176
39	23.052	VV	0.1622	200.16003	19.10484	0.20283
40	23.239	VB	0.0746	393.56195	78.30203	0.39881
41	23.686	BB	0.0939	116.66028	17.48175	0.11822
42	24.092	BV	0.1849	304.48340	21.03788	0.30854
43	24.202	VV	0.0809	192.24429	34.57012	0.19481
44	24.400	VV	0.0857	232.79774	36.86974	0.23590
45	24.567	VV	0.1417	501.43384	48.07377	0.50812
46	24.773	VV	0.0956	160.72791	26.19496	0.16287
47	24.886	VV	0.0804	134.08672	24.30708	0.13587
48	25.022	VV	0.1127	238.28441	29.98009	0.24146
49	25.131	VV	0.0968	218.71428	30.09610	0.22163
50	25.352	VV	0.1213	219.66365	23.44962	0.22259
51	25.532	VB	0.0972	187.38908	28.32673	0.18989
52	26.049	BB	0.1414	126.31726	11.75255	0.12800
53	26.625	BB	0.0680	109.17065	24.48484	0.11063

Totals : 9.86848e4 1.70806e4

*** End of Report ***