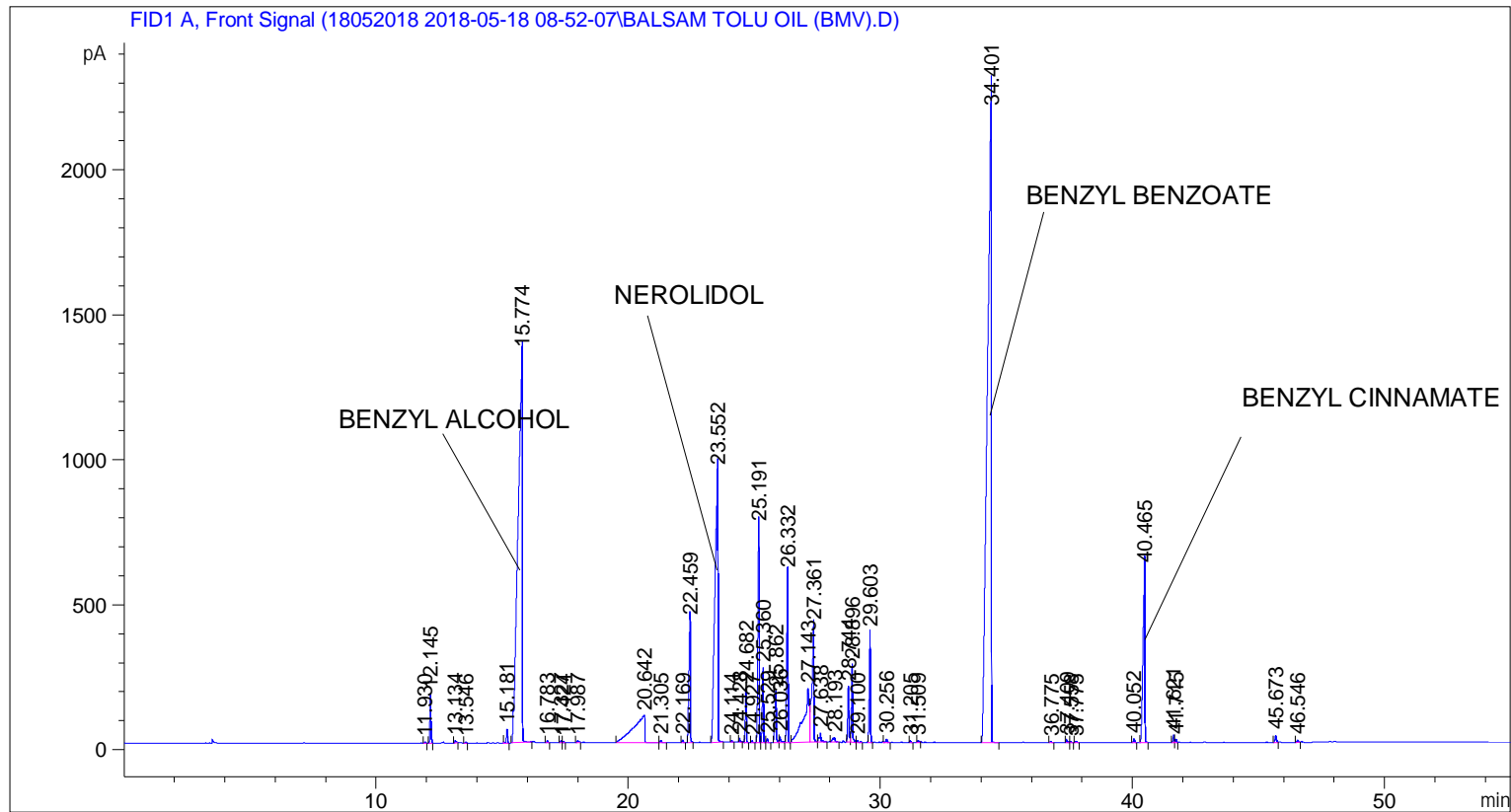


```

=====
Acq. Operator   : SYSTEM                               Seq. Line :    4
Acq. Instrument : BMV_NEW_GC_7820                     Location  : Vial 104
Injection Date  : 5/18/2018 12:56:25 PM                Inj       :    1
                                                    Inj Volume: 0.5 µl

Acq. Method    : C:\CHEM32\2\DATA\18052018 2018-05-18 08-52-07\UNIVERSAL F.M
Last changed   : 5/18/2018 8:52:12 AM by SYSTEM
Analysis Method: C:\CHEM32\2\DATA\18052018 2018-05-18 08-52-07\UNIVERSAL F.M (Sequence
Method)
Last changed   : 5/28/2018 2:38:46 PM by SYSTEM
                (modified after loading)
Additional Info : Peak(s) manually integrated
  
```



=====
 Area Percent Report
 =====

```

Sorted By       :      Signal
Multiplier      :      1.0000
Dilution       :      1.0000
Do not use Multiplier & Dilution Factor with ISTDs
  
```

Signal 1: FID1 A, Front Signal

Peak #	RetTime [min]	Type	Width [min]	Area [pA*s]	Height [pA]	Area %
1	11.930	BB	0.0459	11.16010	3.84460	0.01506
2	12.145	BB	0.0491	506.16586	168.34801	0.68297
3	13.134	BB	0.0657	35.01303	7.90409	0.04724
4	13.546	BB	0.0467	12.78051	4.29961	0.01724
5	15.181	BB	0.0510	147.56279	46.56357	0.19911
6	15.774	BB	0.1517	1.63389e4	1345.39258	22.04606

Peak #	RetTime [min]	Type	Width [min]	Area [pA*s]	Height [pA]	Area %
7	16.783	BB	0.0477	19.80498	6.85096	0.02672
8	17.327	BV	0.0458	19.67121	6.78415	0.02654
9	17.424	VB	0.0482	15.34610	4.95240	0.02071
10	17.987	BB	0.0790	35.43181	6.56256	0.04781
11	20.642	BV	0.4024	2989.10718	92.64212	4.03320
12	21.305	VB	0.0583	31.33437	8.24866	0.04228
13	22.169	BB	0.0533	34.40567	10.20636	0.04642
14	22.459	BB	0.0633	1788.07227	422.88092	2.41264
15	23.552	BB	0.1093	7815.50781	937.52893	10.54545
16	24.114	BB	0.0479	17.06767	5.86943	0.02303
17	24.428	BB	0.0561	47.69943	13.21370	0.06436
18	24.682	BB	0.0480	543.57959	186.28940	0.73345
19	24.927	BB	0.0526	20.66588	6.58549	0.02788
20	25.191	BV	0.0576	2787.75854	745.67389	3.76152
21	25.360	VV	0.0515	832.13184	259.11633	1.12279
22	25.529	VB	0.0598	46.35146	12.33755	0.06254
23	25.862	BV	0.0658	713.32745	174.00558	0.96249
24	26.036	VB	0.0702	95.51445	19.84372	0.12888
25	26.332	BB	0.0554	2083.99707	587.61279	2.81193
26	27.143	BV	0.1901	2822.84497	187.05780	3.80886
27	27.361	VV	0.0861	2497.92310	404.27341	3.37044
28	27.638	VB	0.0737	160.43948	30.32602	0.21648
29	28.193	BB	0.0922	105.94675	15.41592	0.14295
30	28.744	BV	0.0524	630.19788	191.68829	0.85033
31	28.896	VV	0.0543	933.10651	270.21310	1.25904
32	29.100	VB	0.0687	33.53553	7.42776	0.04525
33	29.603	BB	0.0534	1284.51904	380.07950	1.73320
34	30.256	BB	0.0651	53.63745	12.23846	0.07237
35	31.205	BB	0.0482	16.65135	5.68029	0.02247
36	31.509	BB	0.0639	26.20364	6.13213	0.03536
37	34.401	BB	0.1487	2.49390e4	2192.66284	33.65012
38	36.775	BB	0.0604	18.44120	4.63256	0.02488
39	37.409	BB	0.0547	34.53178	9.90958	0.04659
40	37.558	BB	0.0620	19.42156	4.71980	0.02621
41	37.775	BB	0.0628	16.89803	4.21633	0.02280
42	40.052	BB	0.0553	45.72746	13.57885	0.06170
43	40.465	BB	0.0747	3236.97900	601.96411	4.36765
44	41.621	BV	0.0551	83.24679	24.82846	0.11232
45	41.715	VB	0.0487	35.43432	11.27644	0.04781
46	45.673	BB	0.0635	98.57314	24.21138	0.13300
47	46.546	BB	0.0574	30.99296	8.72422	0.04182

Totals : 7.41126e4 9494.81466

=====
*** End of Report ***