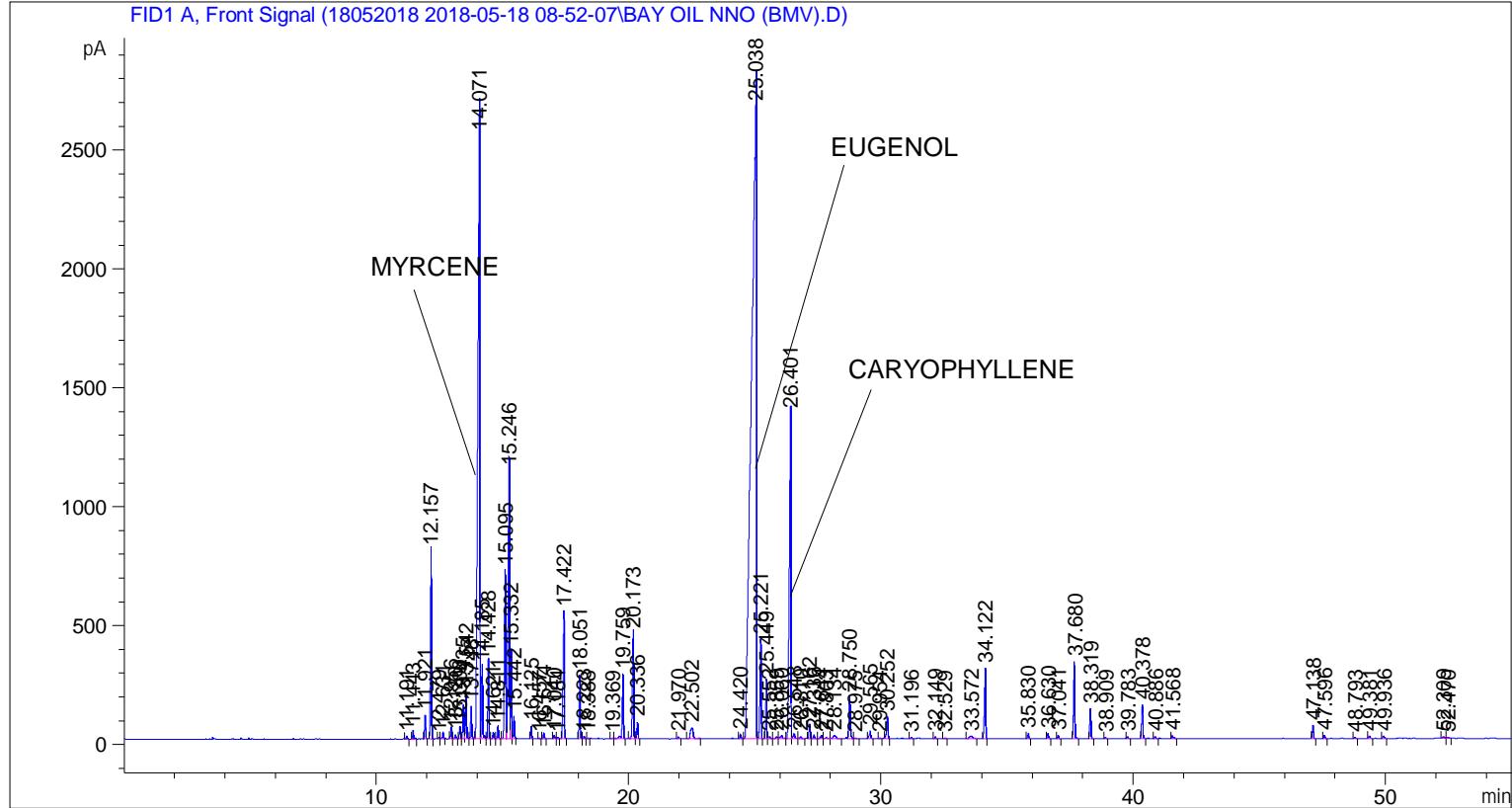


```

=====
Acq. Operator   : SYSTEM                               Seq. Line :    5
Acq. Instrument : BMV_NEW_GC_7820                     Location  : Vial 105
Injection Date  : 5/18/2018 2:12:00 PM                 Inj       :    1
                                                    Inj Volume: 0.5 µl

Acq. Method    : C:\CHEM32\2\DATA\18052018 2018-05-18 08-52-07\UNIVERSAL F.M
Last changed   : 5/18/2018 8:52:12 AM by SYSTEM
Analysis Method: C:\CHEM32\2\DATA\18052018 2018-05-18 08-52-07\UNIVERSAL F.M (Sequence
Method)
Last changed   : 5/28/2018 3:38:17 PM by SYSTEM
                (modified after loading)
  
```



Area Percent Report

```

Sorted By      : Signal
Multiplier    : 1.0000
Dilution      : 1.0000
Do not use Multiplier & Dilution Factor with ISTDs
  
```

Signal 1: FID1 A, Front Signal

Peak #	RetTime [min]	Type	Width [min]	Area [pA*s]	Height [pA]	Area %
1	11.191	BB	0.0458	36.39959	13.34266	0.04148
2	11.443	BB	0.0510	112.19598	35.40685	0.12786
3	11.921	BB	0.0476	284.63824	98.77837	0.32438
4	12.157	BB	0.0493	2392.47925	790.61066	2.72651
5	12.479	BV	0.0461	16.37851	5.60170	0.01867
6	12.631	VB	0.0507	96.61938	29.10497	0.11011
7	12.956	BV	0.0490	152.79446	50.98582	0.17413

Sample Name: BAY OIL NNO (BMV)

Peak #	RetTime [min]	Type	Width [min]	Area [pA*s]	Height [pA]	Area %
8	13.126	VB	0.0544	64.45705	17.75412	0.07346
9	13.300	BV	0.0460	146.82172	50.30682	0.16732
10	13.435	VV	0.0499	438.86932	142.71173	0.50014
11	13.542	VV	0.0491	609.90845	202.86571	0.69506
12	13.748	VB	0.0511	436.44000	137.17917	0.49737
13	14.071	BV	0.0805	1.44427e4	2535.45288	16.45913
14	14.185	VV	0.0477	934.43896	304.99783	1.06490
15	14.428	VB	0.0431	901.15247	337.61172	1.02697
16	14.621	BV	0.0459	77.62552	26.74117	0.08846
17	14.811	VB	0.0461	152.72459	55.53648	0.17405
18	15.095	BV	0.0600	2672.47852	708.86719	3.04560
19	15.246	VV	0.0584	4291.25049	1126.48486	4.89039
20	15.332	VV	0.0390	918.75330	369.18756	1.04703
21	15.442	VB	0.0448	271.92117	96.79651	0.30989
22	16.125	BB	0.0439	146.74466	53.74856	0.16723
23	16.457	BB	0.0462	13.09759	4.46684	0.01493
24	16.624	BB	0.0493	78.54754	25.96041	0.08951
25	17.040	BB	0.0486	44.73916	14.24890	0.05099
26	17.184	BB	0.0467	16.68378	5.61725	0.01901
27	17.422	BB	0.0554	1895.40942	533.87543	2.16004
28	18.051	BB	0.0475	768.22516	267.34302	0.87548
29	18.223	BB	0.0474	29.20713	10.20041	0.03328
30	18.388	BB	0.0358	8.45733	3.81867	0.00964
31	19.369	BV	0.0449	13.08673	4.64076	0.01491
32	19.759	VB	0.0534	905.62097	268.15909	1.03206
33	20.173	BV	0.0575	1641.79541	440.38614	1.87102
34	20.336	VB	0.0488	207.72940	69.68504	0.23673
35	21.970	BB	0.0669	33.55407	7.69381	0.03824
36	22.502	BB	0.1331	367.62592	46.05299	0.41895
37	24.420	BB	0.0503	58.52206	18.81679	0.06669
38	25.038	BV	0.1748	3.79922e4	2722.75146	43.29665
39	25.221	VB	0.0535	1416.01624	418.69821	1.61372
40	25.449	BV	0.0475	718.48468	250.23927	0.81880
41	25.552	VB	0.0798	49.94226	9.74788	0.05692
42	25.859	BV	0.0915	51.68291	8.20917	0.05890
43	26.060	VV	0.0980	96.66236	13.10873	0.11016
44	26.401	VV	0.0656	6039.30713	1366.29163	6.88250
45	26.548	VB	0.0841	117.84686	21.44668	0.13430
46	26.810	BB	0.0696	43.91378	9.21833	0.05004
47	27.162	BV	0.0507	194.12259	61.73567	0.22123
48	27.336	VB	0.0522	51.86948	15.85759	0.05911
49	27.644	BV	0.0666	65.97397	14.09045	0.07519
50	27.803	VB	0.0989	38.69098	5.19435	0.04409
51	28.134	BB	0.0992	105.72237	14.47470	0.12048
52	28.750	BB	0.0564	635.24805	174.98814	0.72394
53	28.975	BB	0.0553	12.76498	3.60415	0.01455
54	29.565	BB	0.0658	140.89224	31.71921	0.16056
55	29.954	BB	0.0524	14.66413	4.23141	0.01671
56	30.252	BB	0.0575	343.19745	91.98531	0.39111
57	31.196	BB	0.0450	12.49676	4.70492	0.01424
58	32.149	BB	0.0527	29.04347	8.74969	0.03310
59	32.529	BB	0.0539	13.15230	3.84670	0.01499
60	33.572	BB	0.1253	103.56183	11.25697	0.11802
61	34.122	BB	0.0540	1012.21118	294.88153	1.15353

Peak #	RetTime [min]	Type	Width [min]	Area [pA*s]	Height [pA]	Area %
62	35.830	BB	0.0551	76.01482	21.55534	0.08663
63	36.630	BB	0.0618	90.69392	23.10012	0.10336
64	37.041	BB	0.0542	50.31212	15.37452	0.05734
65	37.680	BB	0.0563	1122.68982	324.98663	1.27944
66	38.319	BB	0.0548	421.21146	126.74155	0.48002
67	38.909	BB	0.0515	19.56635	6.09332	0.02230
68	39.783	BB	0.0566	29.14507	7.98557	0.03321
69	40.378	BB	0.0548	495.29172	141.72531	0.56444
70	40.886	BB	0.0534	27.11128	8.44814	0.03090
71	41.568	BB	0.0732	62.29924	12.70779	0.07100
72	47.138	BB	0.0534	181.21983	53.69630	0.20652
73	47.596	BB	0.0542	41.54223	12.06704	0.04734
74	48.793	BB	0.0594	16.70495	4.49423	0.01904
75	49.381	BB	0.0603	39.43324	10.39308	0.04494
76	49.936	BB	0.0637	38.88282	9.92032	0.04431
77	52.309	BV	0.0790	30.24985	6.18759	0.03447
78	52.470	VB	0.0868	26.54873	4.63897	0.03026

Totals : 8.77487e4 1.52622e4

=====
*** End of Report ***